

**Bookmark  
Your  
Place  
in  
History**

Visit  
Global Genealogy's  
website

globalgenealogy.com

- Genealogy Books
- History Books
- CD ROM Reference Material
- Maps
- Archival Supplies

Global Genealogy  
13 Charles St.  
Suite 102  
Milton, Ontario  
CANADA L9T 2G5  
1-800-361-5168

**Recycled  
Reading**

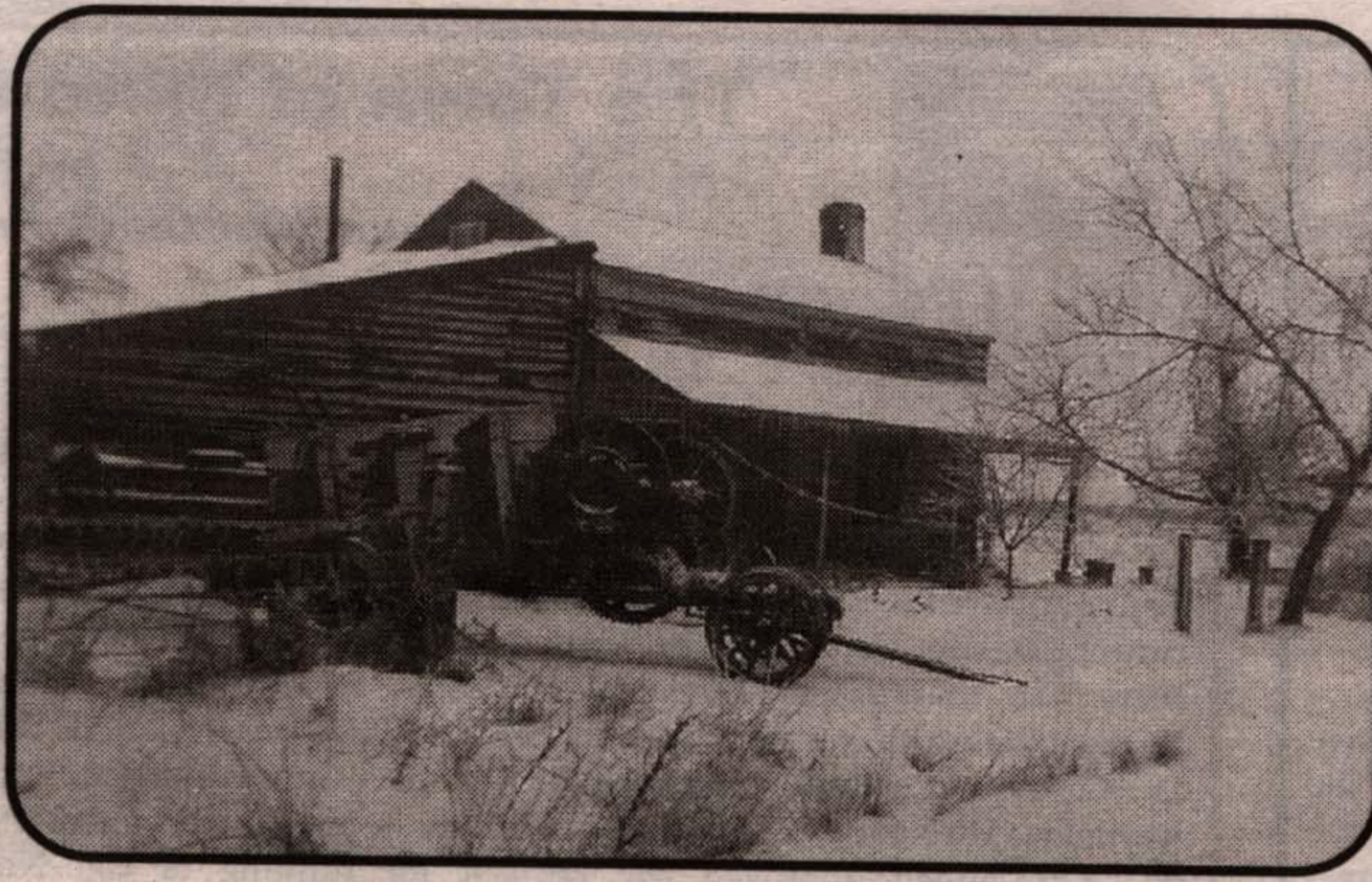


**Book Exchange**

"Previously  
Enjoyed Books"

Fiction, Sci-Fi,  
Mystery, Romance  
Horror, Hobbies,  
Do-it-Yourself  
Cooking, Gardening,  
etc., etc.

Browsers are  
always welcome  
**878-6024**  
184 Main St., East  
Milton, Ont.



Whaley Homestead

Lot 1, Conc. 11

~ 1945 ~

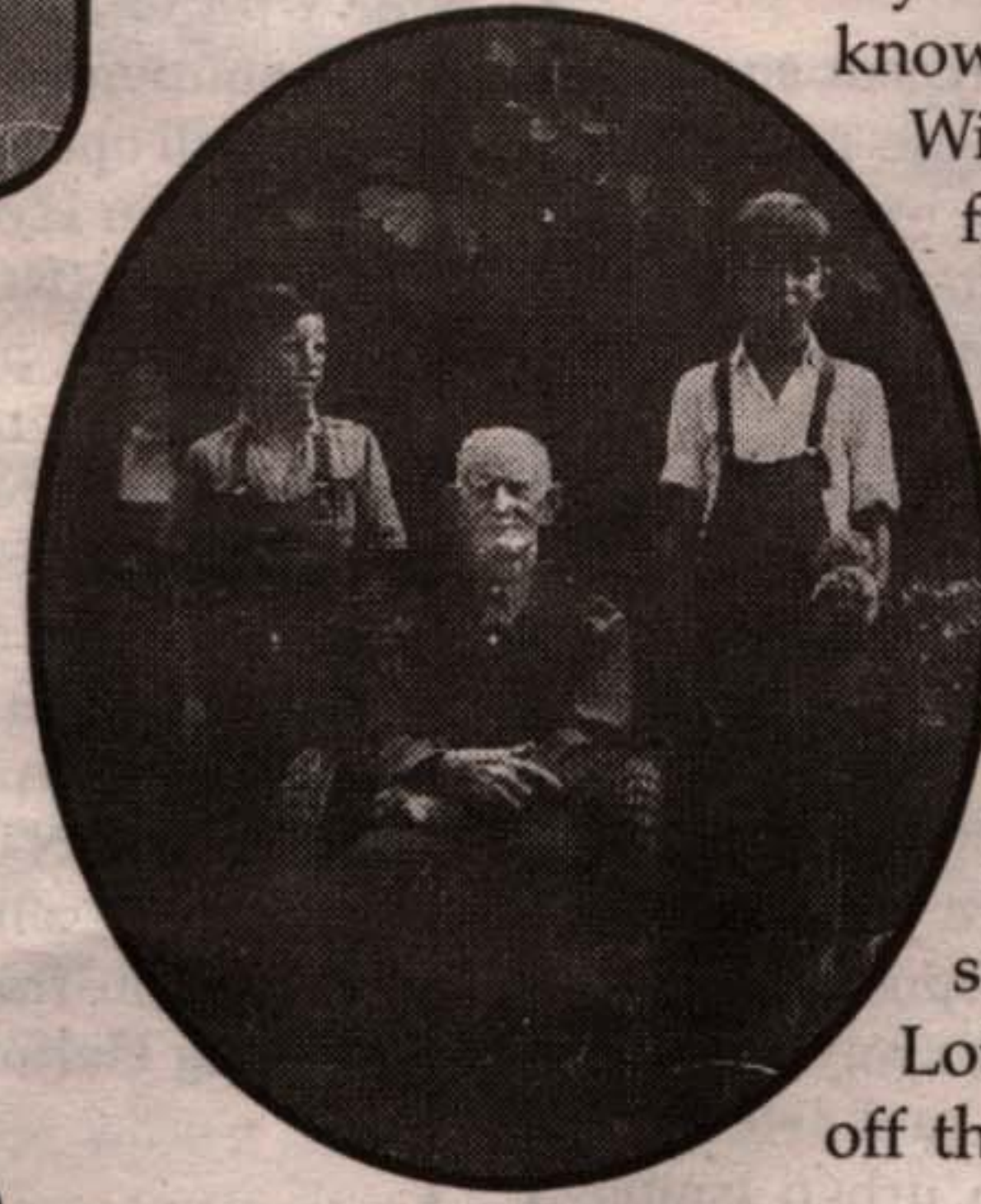
Gordon Whaley used the stationary hay press (front) for custom work throughout the area



Robert James  
Whaley

~ 1928 ~

**W**illiam Coulson Whaley, a native of Ireland, immigrated to Canada in 1819. Records pertaining to his first wife and children: William, Agnes, Sarah, John, David and George. In 1836 he received the west half of Lot 15, and in 1837 received Lot 1, Conc. 11, East half in Esquesing Township. He had a smith shop and tavern on a corner lot off his Esquesing farm. In Chinguacousy Township side of this corner. In 1837 William Whaley eventually, a Union school was built on the east corner of this lot. The school community was well established as "Whaley's Corners." The school known as Mount Zion was built just north of the Orangeville farm. William C., now a widower, married Mary Ann McCracken. William C. died at this farm in 1869 at the age of 53. The farm was Esquesing until their son Robert James bought it in 1928. He raised two daughters and five sons on this farm. His son-in-law, his husband William Arnott farmed on what is now known as the Campbellville where he and his wife Margaret Ferguson lived. They raised three daughters and five sons. The farm was used for special events, including the annual erection of a school for students on trips, tobogganing, and other events. A school was built on Lot 1, Conc. 11. She was well known for her fine needlework. She had off the Whaley farm for her sons Raymond, Lorne and Lena's children, daughter Eileen married George in Labrador and then Ontario. Herb and Eileen lived on the farm. After his death, Eileen opened a doll museum, "The Whaley's of Lo...".



Roswell Arnott, Robert Whaley  
& Grenville Arnott

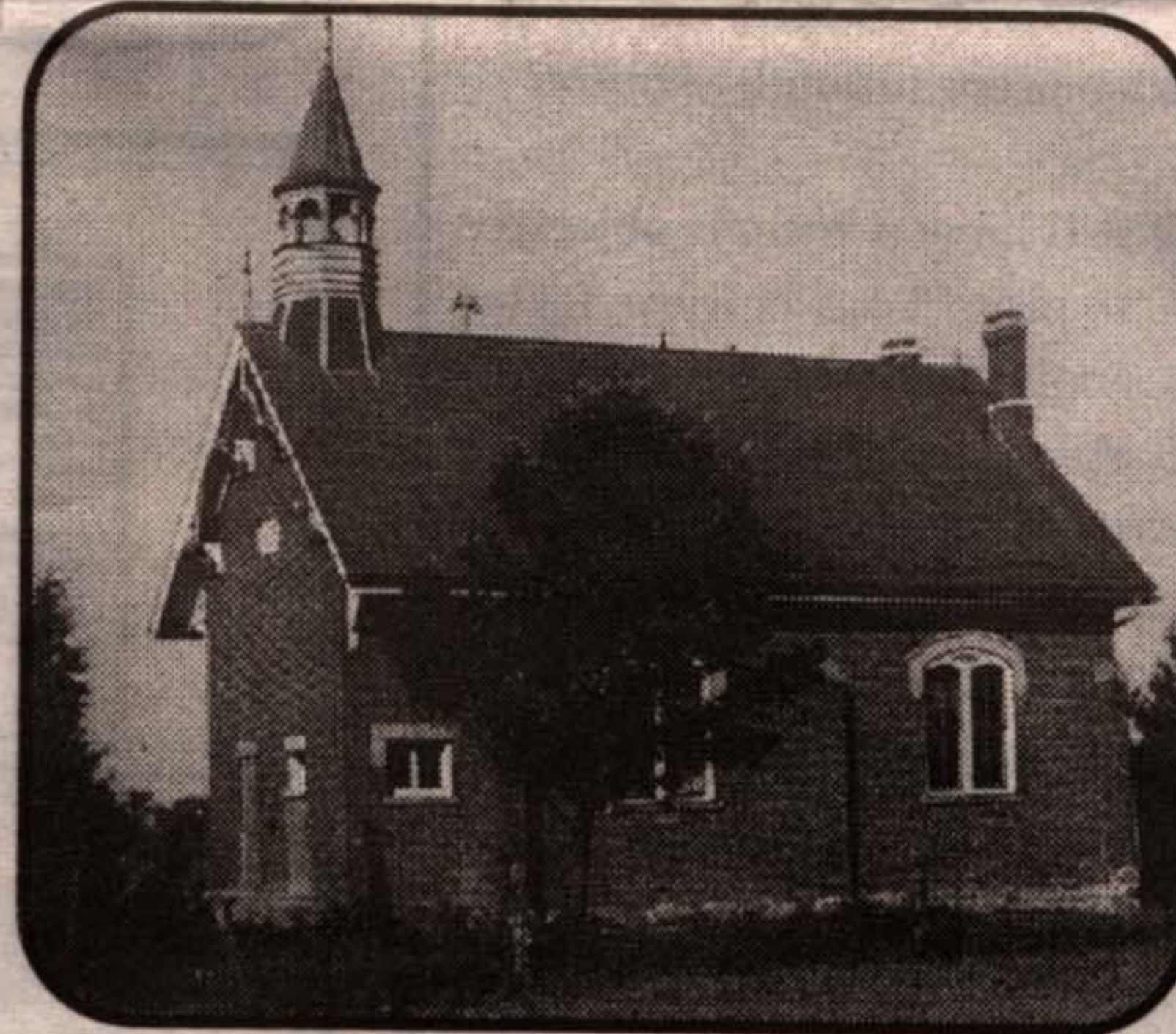
Robert J. and  
Grandsons

~ 1932 ~



Gordon Whaley  
& Team

~ 1930 ~



Victoria School  
Union S.S. no. 21  
A.D. 1888

~ 1945 ~

Raymond and his wife Bernice lived on the homestead. Ray owns a construction business. He served with the Mechanical Engineers. He was an armoured bulldozer operator. Jean lived on the farm. She was a machinist at Orenda Engines. She worked in the construction trade and resides in North Bay. She was a real estate broker for Canadian Tire the last 10 years. She and her wife Ann live on one of the lots. Now retired, he was a draughtsman. He taught technical courses in Peel County at E.C. Drury where she still supplies. Milton.

Partial - direct line only for Lot 1, Conc. 11 and background information courtesy of William Whaley. Compiled by Betty Brownridge McClure.



Gordon, Harold & Lavergne Whaley

Robert Whaley  
Sons

~ 1918 ~

William C. Whaley  
b. 1776, d. 1869

William Whaley  
Hannah ?  
Agnes Whaley  
Sarah Whaley  
John W. Willis  
John Whaley  
b. 1815, d. 1906  
Ann Wiggins  
b. 1819, d. 1883  
David Whaley  
b. 1817, d. 1890  
George Whaley  
b. 1825, d. ?  
Elizabeth?  
b. 1835, d. ?



Whaley  
Family Tree

1. Unknown

2. Mary Ann McCracken  
b. 1810, d. 1890

**LONG LANE ORCHARDS**

Order your Christmas  
baking early!

2nd Line,  
south of 15th Sideroad,  
Campbellville

**905-854-2673**

e-mail: apples@worldchat.com

Open  
every day  
including  
December  
24th

10 varieties  
of crisp apples  
Try our  
mincemeat and  
apple-cranberry pies!



Professional  
design and  
printing

**M McNAB**