

Sunny Side Up and flowers brighten Guelph/Eramosa

SPECIAL TO THE COMPASS

Lots of happy campers took part in Rockwood's first Sunny Side Up Day Camp this summer. The kids, ranging in age from five to 12 years old, had eight fun-filled

weeks with themes such as "Outta This World Space Week," or "Wilderness Adventure Week." Thursdays were an off-site trip day. Participants went horse-

back riding, or places such as Wild Water Kingdom or Bingeman's. On Wednesdays they mini-golfed at Rockwood Conservation Area, and Tuesdays enjoyed Toonie Tuesday Lunch. Local residents may have seen the campers in their distinctive bright hats and sunny T-shirts.

"The response to the new camp was overwhelming," says Rosa Kliese, from the Parks and Recreation Department of the Township of Guelph/Eramosa. "Parents are advised to book early next year for Sunny Side Up

Day Camp 2000, as many of this year's participants will return."

Information will be available by February or March of 2000; further details will be provided in The Compass.

The Township of Guelph/Eramosa was also rich with vibrant coloured flowers that hung in baskets around Rockwood, Eden Mills and the main entrance at Marden Park. Marden Park was newly landscaped by the Township of Guelph Horticultural Society, while the baskets in Rockwood and Eden

Mills were purchased and maintained by the Department of Parks and Recreation. The Department of Parks and Recreation has expressed an interest in working with the Eden Mills and Rockwood Garden Clubs, the Township of Guelph Horticultural Society, and the merchants along the streets to come up with a colour scheme or theme for next summer.

"This would be an excellent step to enter the Communities in Bloom competition in the year 2001," Kliese adds.



JOHN DEERE
Let It Snow!
Sale

SAVE
\$200.

724D Snow blower



Winter's bite is just around the corner. Bite back with the John Deere 724D snow blower!

- * 4-cycle, 7-horsepower engine
- * 24-inch clearing width
- * 8-speed transmission (6 forward, 2 reverse).
- * 11-inch serrated steel auger cuts through heavy snow and ice
- * operator-friendly control panel

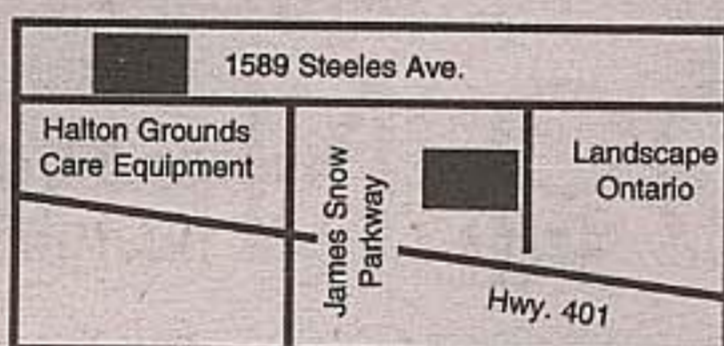
There's no better way to blow through winter. Come see the John Deere 724D today!

HALTON Grounds Care Equipment

Easy to reach on Hwy. 401 & James Snow Parkway
1589 Steeles Ave. E. Milton, Ont. L9T 2X8



NOTHING RUNS LIKE A DEERE®



SALE ENDS NOVEMBER 30, 1999.

797 tucks into its berth

BY DEBORAH QUAILLE
THE COMPASS

On July 29, 1999, the Lake Erie & Northern interurban combine car #797 was delivered to the Halton County Radial Railway Museum and tucked into its temporary berth in barn #3.

The 797, which ran between Galt, Paris, Brantford, Simcoe and Port Dover until 1955, spent its retirement years at another streetcar museum in Maine.

"A lot of Canadian equipment ended up down there; they opened in 1954 and were well established before we were running," says Joe Marentette of the HCRR. "We were glad to get [a Canadian train] back."

The 797 was a baggage and passenger car, and it's the only passenger carrying car left from that line. The museum estimates that they may require up to \$200,000 in restoration funding, depending on exactly how much needs to be done.

"Regaging would be a tremendous expense," Marentette adds. The vehicle would need to be regaged to fit the track on which the trains at the HCRR run. If the museum is able to get some assistance from CP, it would be a great boon, from both financial and labour-intensive standpoints.

"Other than the regaging," museum volunteer Gus Smith remarks, "it's basically complete and just needs rebuilding and overhauling. The wood siding

would be replaced, and new wiring would be put in. All the work is done by our volunteers."

Although the paint is faded and peeling, the windows are broken and the steel is rusty on the 797, just by looking at some of the

magnificent restorations that the Halton County Radial Railway museum has accomplished, it's not difficult to imagine the car with fresh yellow and red paintwork, polished glass and sparkling lights escorting hoards of interested patrons along the track.

The museum would like to thank all the donors to the

"Bring Back the 797 Fund." For more information on how to make a donation to the restoration fund, or to the Halton County Radial Railway museum, phone (519) 856-9802, or look for their website at www.hcrr.org

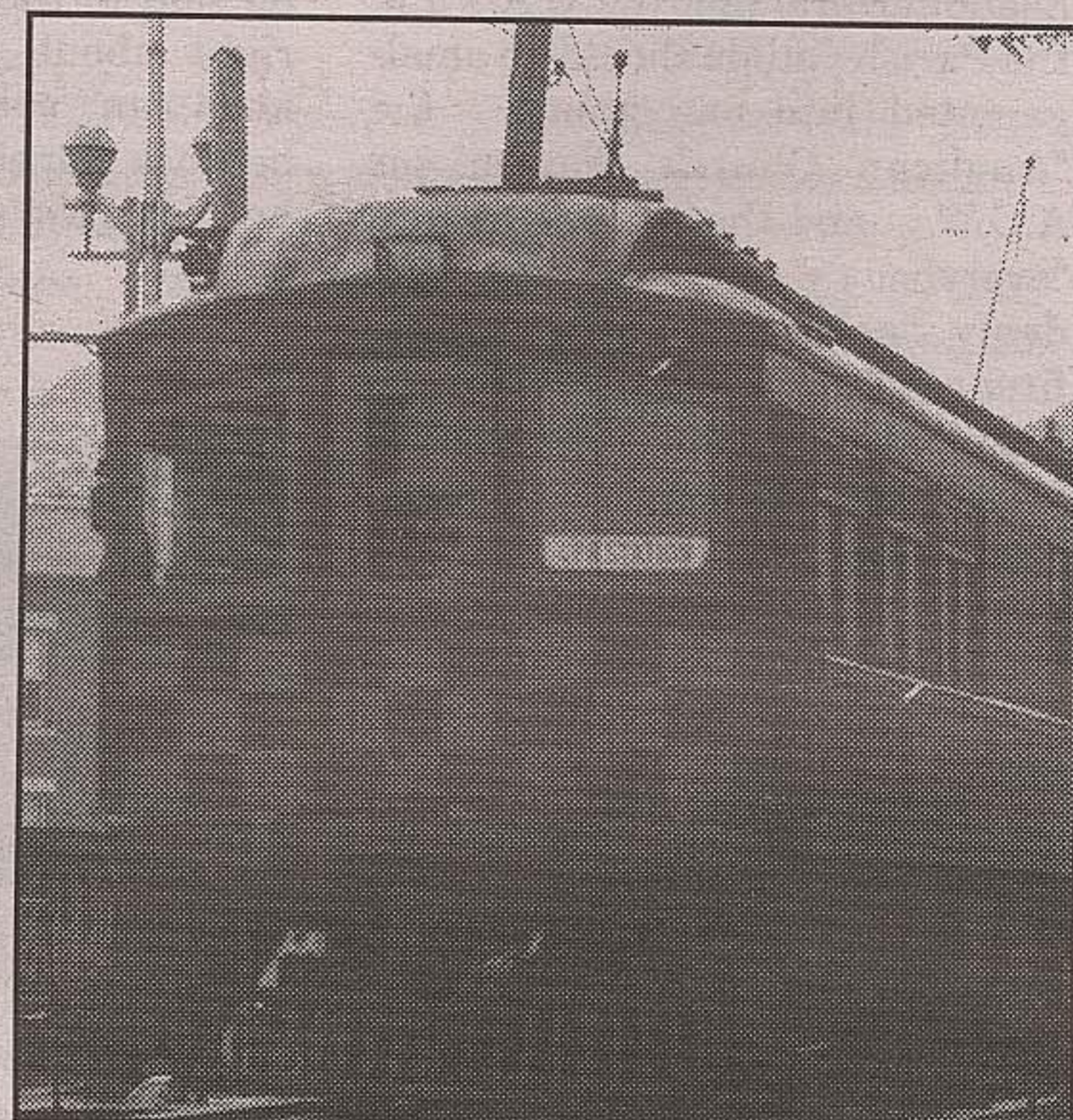


PHOTO COURTESY OF H.C.R.R.

Funding for hiking trail improvements in Rockwood

BY DEBORAH QUAILLE
THE COMPASS

Gilbert MacIntyre and Son Funeral Home is providing funding for hiking trail improvements in the Rockwood Conservation Area.

The money donated by the family-owned firm will be used to improve paths, and make stairs, boardwalks and lookout platforms to update the area, which is run by the Grand River Conservation Authority.

"They (the GRCA) approached me with their ideas, and this is what we'd like to do," says Mike MacIntyre, president of the Funeral Home. "In June of 2000 we'll have the first memorial service for every family we've dealt with in the past year. We'll be donating \$50 per family that we serve in both Rockwood and Guelph. People that want to remember someone else that may have been served by another funeral home are certainly welcome to donate to the [conservation area] fund in any amount they wish."

MacIntyre will record the names of donors for recognition and the GRCA will issue a charitable donation receipt for tax purposes.

In early September the conservation authority was to begin work on a Family Memorial Service Area near the mill ruins, just across the old road bridge in the treed grove.

Ralph Beaumont of the GRCA states, "We didn't want to start on the family memorial area until the park wound down after the summer. We chose an area that's very accessible, and yet is away from the main area. There's also parking nearby at the mill."

"It will take about \$300,000 over the next 20 years to upgrade the park and phase in the trail system. The conservation area has a lot of mature cedars but because there is no defined trail, we have no undergrowth."

According to the GRCA, over 75,000 visitors enjoy the site each season, for canoeing, camping, hiking, and swimming. With the help of Gilbert MacIntyre and Son's funding, visitors will be directed along improved paths, which will promote regeneration of the woods and protect the glacial potholes throughout the park.

Find out what your property is worth...

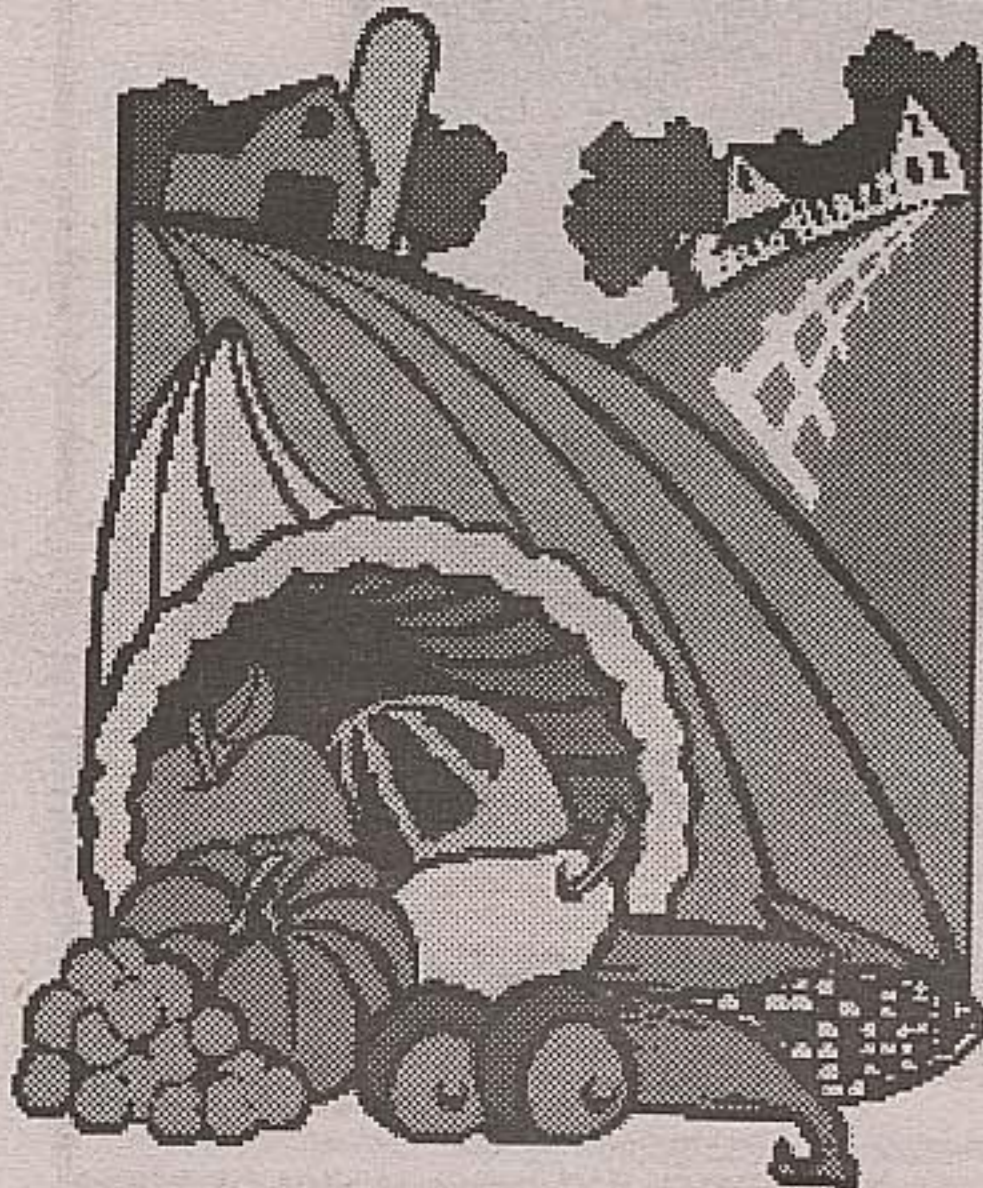
This fall promises a strong real estate market. Buyers are ready but we need more properties to sell. Before you do unnecessary work, discuss your plans with an experienced professional.

call Bonnie Mullen today
(519) 837-1300 or
Toll Free 1-877-374-7653

representing
RE/MAX realty specialists inc., Guelph

- Member of RE/MAX 100% Club
- Million Dollar Club member
- Outstanding Sales Achievement Award 1998

Success built on service



Celebrate Thanksgiving!

with the farm fresh goodness of Ontario

STORE HOURS: • MON - FRI 8AM TO 9PM • SAT 8AM TO 6PM • SUN 10AM TO 5PM



ACTON
IGA
Hometown Proud!

12 Main St. North, Acton
519-853-1960