

### Road Safety Challenge - 1999



**VISIBLY BETTER** - Michael Burke of Faucher Industries and Keith Philips of Reflexite show Jay Kitching and Cecil Patterson of the Halton Farm Safety Association and Jan Mowbray of the Road Safety Challenge Committee some of Reflexite's Retroreflective products for trucking and agricultural equipment. The demonstration of the high-brightness products for visibility was part of the Road Safety Challenge week in Milton.

### Picnic in the Park

Saturday, July 17th  
Prospect Park, Acton

Show & Shine  
Starting at noon, view a huge assortment of vehicles

Car Rally  
Rev up the engines at 2:00 p.m. and take part in a giant car rally!  
\$5 entry fee \* great prizes

Chicken Barbecue  
Commencing at 5 p.m., enjoy a delicious (Maple Lodge Farms) barbecued chicken dinner in picturesque Prospect Park  
Tickets - \$7.50/person, \$28/family of four

Tickets available at  
The Needle Gnome & Wetherby's or call 519-853-4311

ALL PROCEEDS TO  
**BUILDING OUR FUTURE**  
The Acton Agricultural Society

### Milton Steam-Era

The best of the past, preserved for the present,  
for the pleasure of the future!

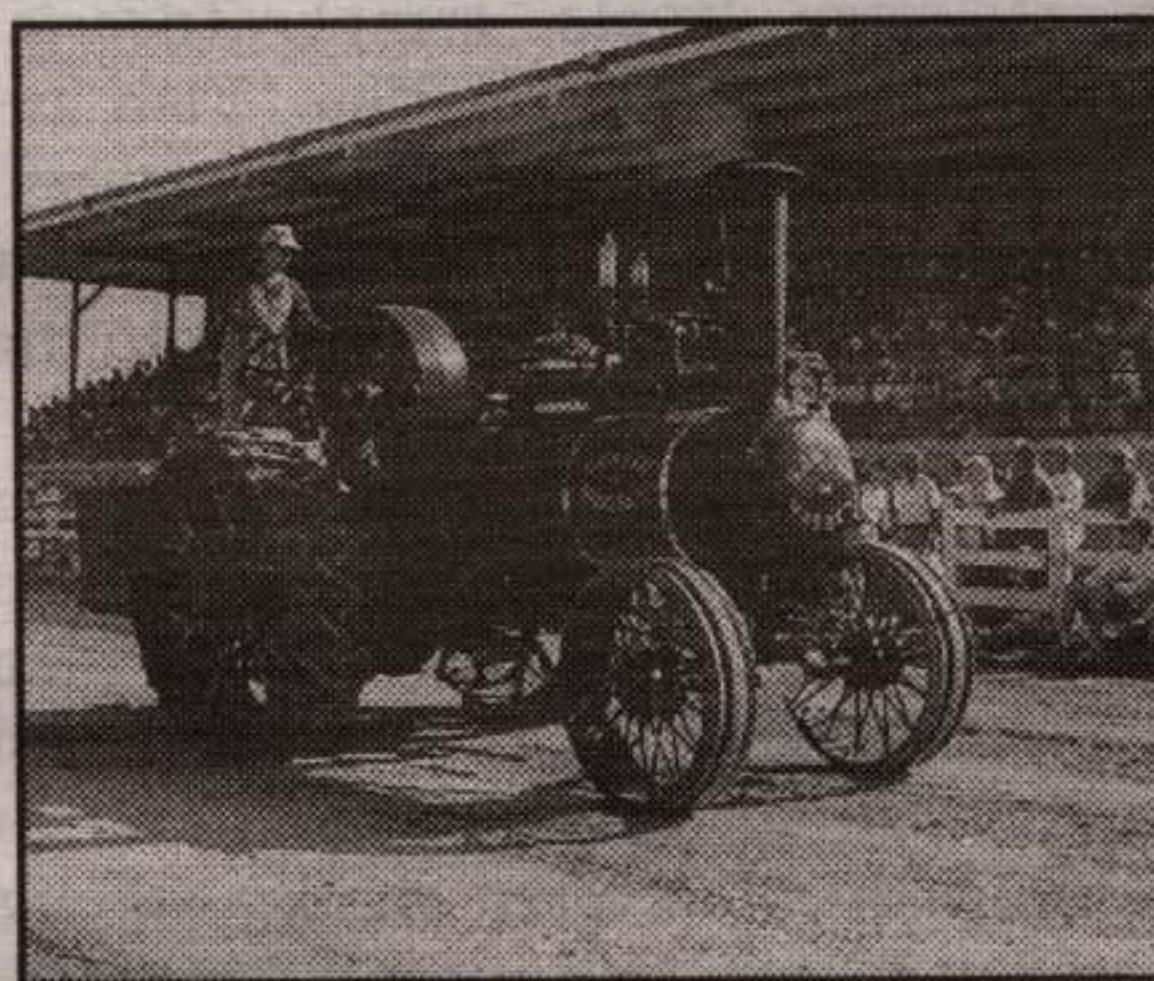
SPECIAL TO THE COMPASS

In response to the changing profile of visitors to Milton Steam-Era, this year's show is offering more entertainment all day, every day to appeal to young families. The 'Second Stage' was added last year and proved very popular, drawing grandparents and parents with young children for games and contests like kids' tractor pulls. Fashion shows, musical performances, craft demonstrations and more appeal to all ages.

The Second Stage augments the busy daily entertainment schedule that has drawn visitors from hundreds of miles away for the past 38 annual Steam-Era shows. Twice daily parades of antique tractors chug their way past the grandstand and around the 1/4 mile track at the Milton Fairgrounds. Antique tractor pull contests roar on Saturday and Monday mornings of Labour Day weekend. Demonstrations of threshing, and a working sawmill and shingle mill continue throughout the day. All the while, visitors young and old get to examine hundreds

of working antique tractors up to 90 years old, gas engines (used for everything from washing clothes and pumping water to grinding grain), and dozens of classic cars, too.

This year, Steam-Era is promoting itself with the slogan **The best of the past, preserved for the present, for the pleasure of the future!** For many, the most entertaining and informative part of Steam-Era is the chance to talk with the collectors who have lovingly restored their historic equipment.



More than a dozen steam engines, like this Sawyer-Massey, are the highlight of the daily parades during the annual Labour Day weekend Steam-Era at the Milton Fairgrounds. Over 200 antique gas tractors and more than 150 gas engines will be on display.

"Each tractor has its own unique history - the type of work it's done, where it was made, where it was found and 'rescued'," explains Brad Clements, a director of the Ontario Steam and Antique Preservers Association which runs Steam-Era. "Our members take pride in sharing that history with the thousands of Steam-Era visitors who share their interest. For kids and families, it's a great way to make our Canadian farm history come alive and we see many grandparents reminiscing with family about the memories Steam-Era re-awakens."

"It's fun too, to see the new mix of visitors coming equally from city backgrounds as well as rural roots."

All the activities and entertainment at Steam-Era, which is featuring John Deere equipment this year, are offered at one comprehensive low admission price of \$5 for adults and \$1 for children under 12. The Milton Fairgrounds open at 8 a.m. daily.

The event takes place Saturday, Sunday and Labour Day Monday, September 4-6, 1999 (there are limited activities and reduced admission on Friday). Saturday night winds up with a foot-stomping Country and Western Talent Contest. Sunday concludes with a Variety Musical program, both shows starting at 7 p.m. Besides the entertainment, demonstrations, games and activities scheduled all day every day, visitors can enjoy the crafts show and sale, bargain hunting at the trading post and flea market, and the selection of home-style cooking on the grounds, in the buildings and under the tent.

Steam-Era '99 is the largest show of its kind in eastern Canada and with its ever-changing program of events, this year promises to be one of the best.

For further information, call Brad Clements at (905) 878-6576.



Donna Danielli's

## "Just Kidding Around"



### Summer's here!

Summer is finally here, the kids are out of school and everyone's looking for something to do that won't require a second mortgage just for admission fees. I know my family tries to fit in at least one excursion a year to places like Marineland or Wild Water Kingdom, but it's great to live in an area where there are so many things to do that are fun for the family but won't break the bank.

The 85th Birthday Celebrations in Campbellville run Saturday June 26 and Sunday June 27. The Campbellville Area Business Association hosts this event which will run from 10:00 a.m. to 5:00 p.m. each day and features clowns, a live band, pony rides and street vendors, as well as food, a petting zoo and face painting. For more details, phone 854-1244.

The **Ontario Renaissance Festival** will be open Saturdays, Sundays and Civic Holiday Monday from July 10-August 15. Hours are from 10:30 a.m. to 7 p.m. Admission costs are \$15.95 for adults, \$14.50 for seniors (seniors are admitted free July 17 for Senior's Day) and \$7.95 for children aged 7-15 (children admitted free on Children's Weekend July 10-11). The Festival is located on Eighth Line; for more information call 1-800-734-3779.

The **Farm Museum** offers fun for the whole family this month. Saturday June 26 is a Family Fair and Senior's Festival, while Sunday June 27 is "Savannah Sunday", a family day of Fun and activities with a Caribbean theme. Call 878-8151 for information on either event.

Gorge yourself on fresh strawberries when Andrew's Scenic Acres hosts its annual **Strawberry Festival** from July 1-4. Always a lot of fun for everyone. Call 905-878-5807.

For entertainment, food, games, and children's activities, drop by **Festival Italiano** from July 9-11. This free event is hosted by the Italian Canadian Club and takes place at 135 Ferguson St., Guelph. Call 519-836-5314 to find out more.

July 23-25 is the Hillside Community Festival, Guelph Lake Conservation Area, offers fun for the whole family, featuring music, artisans, exhibits, demonstrations, workshops, kid's programs and international food. Passes range from \$45-\$65 for the weekend. Phone 519-763-6396.

**Milton Community Resource Centre** hosts drop-ins every Monday and Wednesday from 9:15-11:15 for \$2 per visit. As well, Kids Connection, a drop off program is every Friday morning and the Toy Library will open from 9:15-11:15 Mondays to Fridays. All programs begin July 5th and will take place at MCRC's location at 917 Nipissing Rd., Milton. Call Kathy Percival at 876-1244, ext 12.

**Summer Carnival** at the Acton Arena and Community Centre on Tuesday July 27 from 7-9:30 p.m. Call the Recreation & Parks Department at 873-2601, ext 267 and ask for Sara or Scott.

Well, now that's a lot of fun to pack into one month. Add in to that, long lazy days on the beach at Kelso or hikes through any of our great conservation areas and my family's all set. If you've got anything going on in August that you think people should know about, call me at 905-854-2469 and I'll see if I can get it in for next month. Until then, have fun and don't forget the sunscreen.

New this summer!



### Sunny Side Up Day Camp

191 Main St., Rockwood & Pavilion #2,  
Guelph Recreational Park, Marden  
Sunbeams: Ages 5 to 8 years  
Lightning Bolts: Ages 8 to 12 years

An adventure program full of theme days, games, crafts, trips, camp-outs and more! Eight weeks from July 5 to August 27, 1999, 8 a.m. to 5:30 p.m. \$95/child/week. For more information call **Rosa Kliese**, Township of Guelph/Eramosa Dept. of Recreation Director at (519) 856-9951 ext. 25



### Kidz Korner

- \*3000sq. ft playground
- \*large party room
- \*private times available
- \*leave the clean up to us!
- \*party pkgs. for every budget

To book your next party  
call 905-878-4697  
150 Nipissing Rd. #10&11



Milton

(down from the new Loblaws)



## Rockwood Co-op Nursery School

Register now for  
1999-2000!

191 Main St. S., Rockwood  
519-856-2150

Serving Rockwood for over 30 years!

## White Rock Ostrich Farm



Now Open  
Weekends

10am to 5pm

Delicious Barbecued  
Ostrich Hotdogs & Burgers

Wagon Tours  
& Ice Cream Cones!

Opened Wednesday thru  
Sunday beginning July

Canada Day Long Weekend Special!

Ostrich steak on a bun. *Delicious!*

### Directions

Hwy 25 north to Regional Rd. 12 (before Acton), turn west to 4th Line, turn north (right) on 4th Line. Fifth mailbox on right. Look for White Rock sign. 13085 4th Line, Rockwood.

FREE ADMISSION TO FARM

519-856-1487