

**Bookmark
Your
Place
in
History**

Visit
Global Genealogy's
website

globalgenealogy.com

- Genealogy Books
- History Books
- CD ROM Reference Material
- Maps
- Archival Supplies

Global Genealogy
13 Charles St.
Suite 102
Milton, Ontario
CANADA L9T 2G5
1-800-361-5168

**Recycled
Reading**

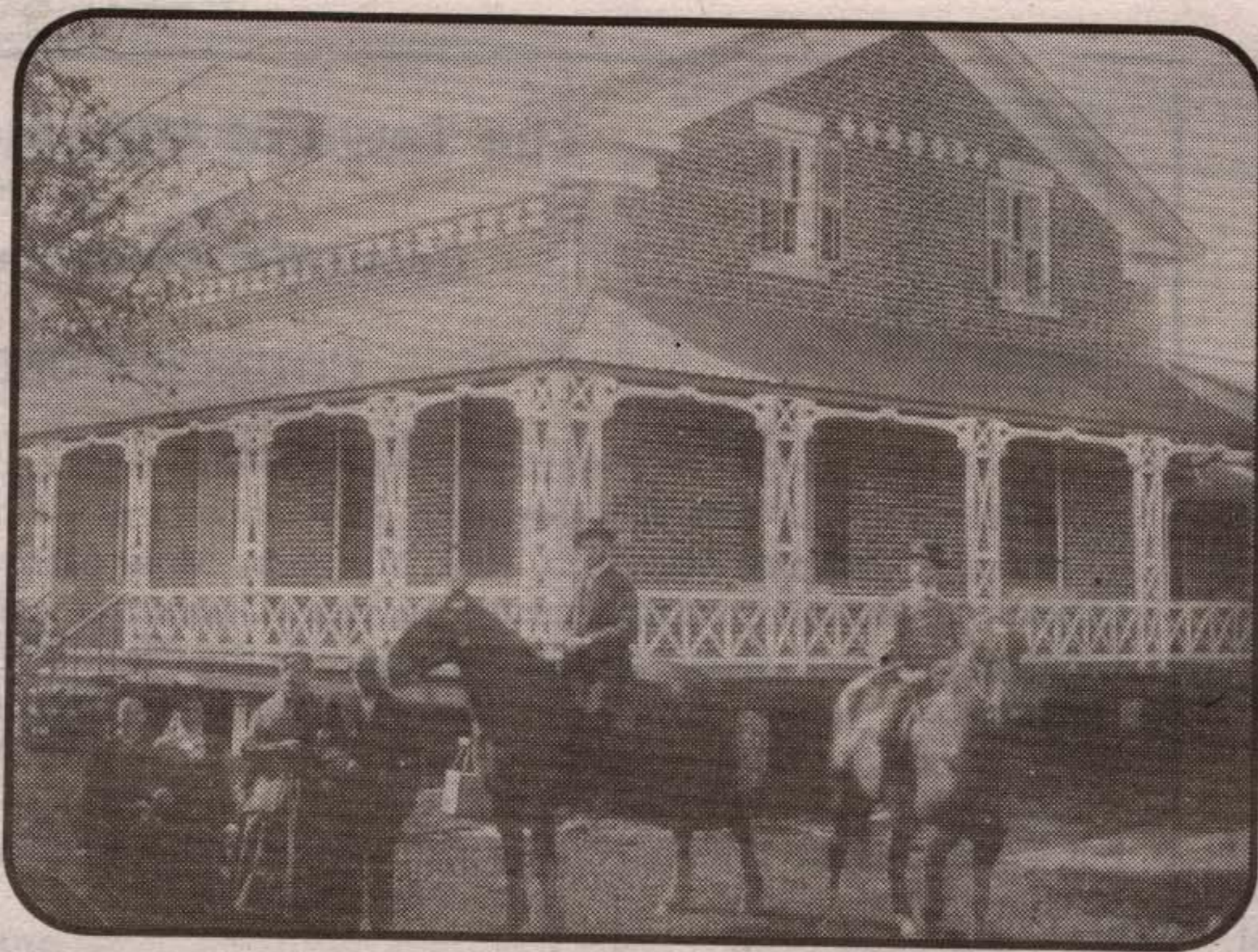


Book Exchange

"Previously
Enjoyed Books"

Fiction, Sci-Fi,
Mystery, Romance
Horror, Hobbies,
Do-it-Yourself
Cooking, Gardening,
etc., etc.

Browsers are
always welcome
878-6024
184 Main St., East
Milton, Ont.



Abraham Neilson Family
~ circa 1900 ~



Back Row, L. to R. - Margaret Cook, Ann Wilson, Ellen Stark, Louisa Brownridge, Margaret Austin.
Front Row - Abraham Neilson, Alice Cook, Louisa Neilson and Neilson Stark.



Neilson
Family
~ circa 1900 ~

Back Row, L. to R. - Andrew, Abraham, Margaret Aitken & William. Middle Row - Louisa Brownridge, Ann Wilson, and Ellen Stark.
Front - Graham Neilson.

Andrew Neilson Family
~ circa 1910 ~



Back Row, L. to R. - Andrew Neilson, Ethel Brownridge, Barbara Neilson, Hannah Allan, Will Allan, Mary Ann Neilson, Jonathan Neilson, Charlotte Neilson, Walter Brownridge. Middle Row - Mary Pearson, unknown, Annie Neilson, Will Neilson, Louise Service, unknown, Louisa Brownridge, Jim Service. Front Row - George Pearson, Dan Neilson, Dan Allan, Samantha Neilson, Isobel Neilson, Chester Service, Pearl Brownridge & Archie Service in front.

Shoebox

Neilson Homestead

~ circa 1890 ~

L. to R. - Louisa Brownridge, Eliza, Louisa, Abraham, William & Andrew Neilson.



Abraham Neilson was born in Peebleshire, Scotland and married in about 1815 with Mary's brother John Fisher and family. The Neilsons then came to the town of York in Upper Canada Esquesing Township which had been Clergy Reserve. Abraham and Mary and George were born in New York, and Helen, Estella, Francis Abraham married Louisa Lawson and farmed the Neilson homestead. Mary married James Stark and farmed Lot 8, Conc. 4 in Esquesing. Mary married Robert Atkinson who owned a sawmill on the Seventh Line of to Manitoba. John married Elizabeth Wylie and settled in Norfolk County in Manitoba. Andrew married Mary Janett Fleming. They farmed on a 100 acre farm. Andrew's son Dan was a well-known thresher in Esquesing. Andrew married Elizabeth Healy and was an innkeeper in Caledonia. Abraham II and Louisa married William Newton of Limehouse. Margaret married Andrew Aitken and farmed on the homestead. Charles and his wife Jean Swanston bought the homestead. Elora. Andrew and his wife Elizabeth Cunningham farmed on Lot 8. Abraham married Isobel Thomas. Their son Marshall, who remains in Esquesing. Births, marriages and deaths painstakingly extracted from local newspapers and microfiche reels at Halton Hills library in Georgetown or the records of Stella Parton, Ralda Waters, Audrey Gilmer and Carol McCartney and Gwendolyn Hill, St. Catharines, are sisters.

Charles & Jean Austin Wedding
~ 1935 ~



L. to R. - Margaret (Neilson) Austin, Charles Austin, Jean (Swanston) Austin and Isobel Swanston.

Abraham Neilson
b. 1782, d. 1854

Abraham Neilson II
b. 1814, d. 1903

Ann Neilson
b. 1845, d. 1903

Louisa Lawson
b. 1815, d. 1848

Abraham Neilson
b. 1848, d. 1903

Margaret Neilson
b. 1815, d. 1848

Graham Neilson
b. 1850, d. 1903

Mary Neilson
b. 1817, d. 1890

Mary Neilson
b. 1852, d. 1890

George Neilson
b. 1819, d. 1892

Margaret Neilson
b. 1854, d. 1903

Helen Estella Neilson
b. 1820, d. 1888

Andrew Neilson
b. 1856, d. 1903

John Neilson
b. 1825, d. 1894

Eliza Aitken
b. 1859, d. 1903

Francis Robt. Neilson
b. 1826

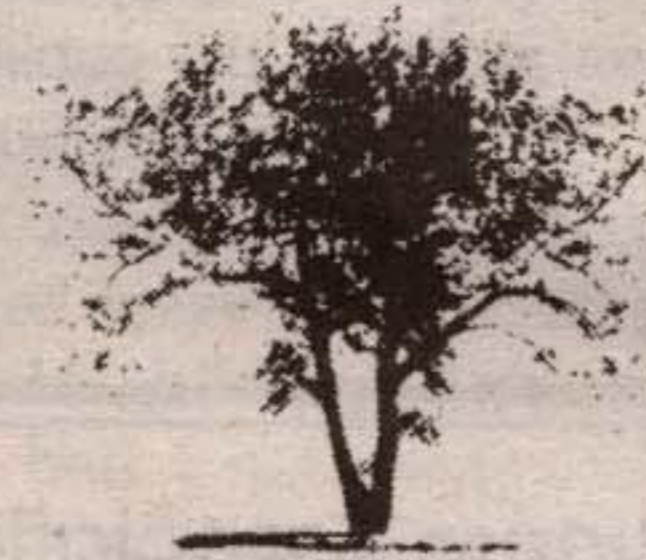
William Neilson
b. 1863, d. 1903

Andrew Neilson
b. 1827, d. 1864

Ellen Neilson
b. 1866, d. 1903

James Neilson
b. 1830, d. 1875

Louisa Neilson
b. 1866, d. 1903



Neilson
Family Tree

Mary Fish
b. 1787, d. 1840



R.R.# 1
MOFFAT, ONT.
L0P 1J0

WE BUY & SELL

Antique Furniture & Paintings

Whole or Partial Estates

BARRY EZRIN
(519) 766-1435

J & E

VIDEOS

TAPING & TRANSFER
SERVICES

120 MILL STREET WEST
ACTON, ONTARIO
L7J 1G5

"We transfer"



Tel: (519)