

Memories

in Nassagaweya Township

...gaweya Township, especially for harvesting wheat. The har-
chines rumbled from farm to farm while country women
ey tirelessly threshed the wheat crop, acre by acre.
ut by gasoline-powered farm machinery, a Pioneer Power
n on Guelph Line to celebrate the vast contribution these
sagaweya during the earlier period of the 1900's.
at the Milton Steam Era on the Labour Day Weekend.

PIERRE REUNION

CAMPBELLVILLE

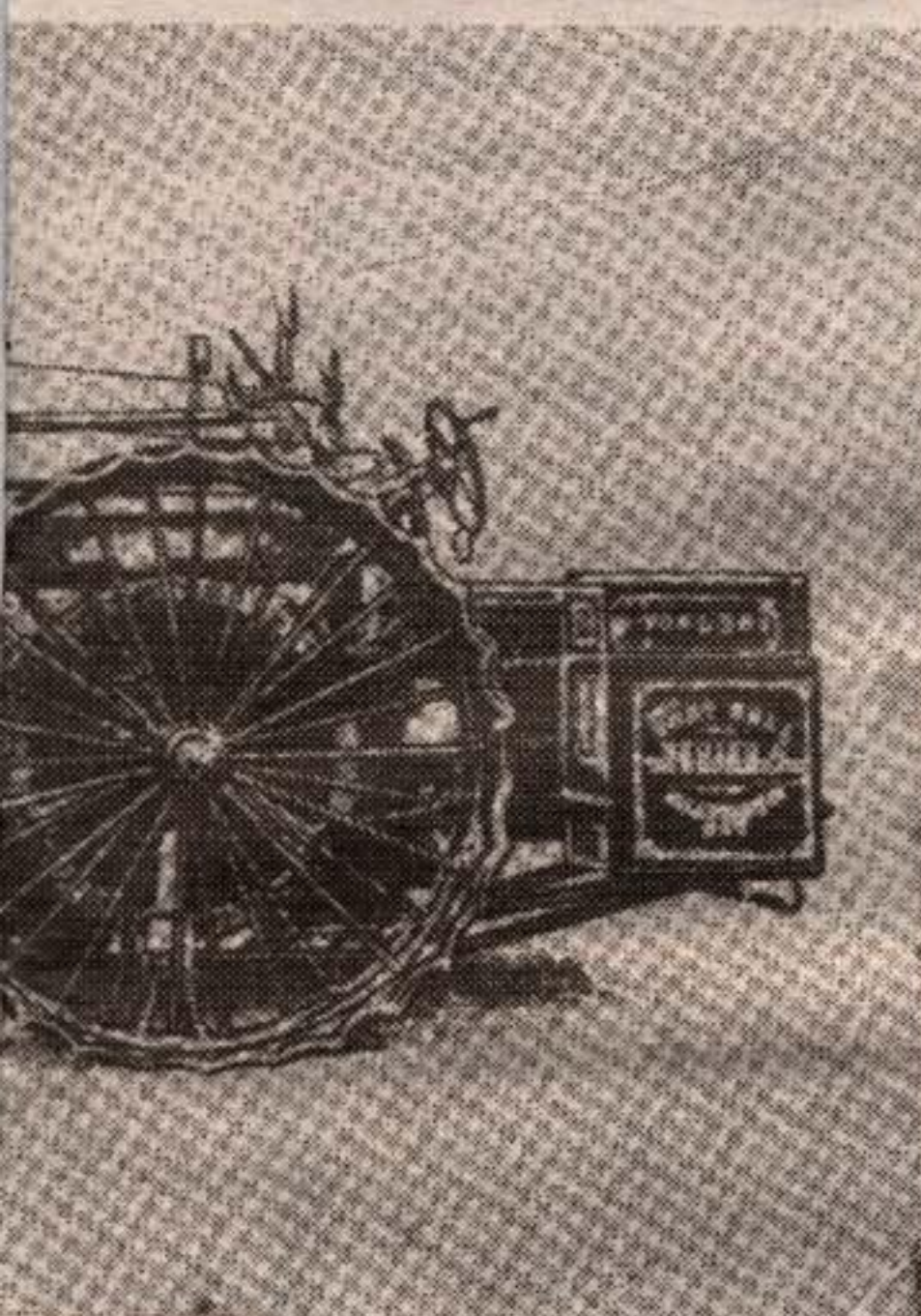
Engines in Action

September 25, 1962

Bob Lowe's Farm

CAMPBELLVILLE
HIGHWAY NO. 401, 25 MILES NORTH OF HAMILTON
WEST OF GUELPH

STARTS AT 3:30 P.M.



- STEAM ENGINE TESTS
-
- MODEL ENGINES
-
- MODEL THRESHING SCENES
-
- MODEL TRAINS
-
- MUSICAL PROGRAMME FRIDAY EVENING

STARTS ON THE GROUNDS ON SATURDAY

Women and Children Free

ON GROUNDS • Toilet Facilities

Organized by: Milda Gilbertson, Bob Lowe, Catharine Currie and Mabel Parker.

Les Lowe's Waterloo Steam Engine
~ circa 1960 ~

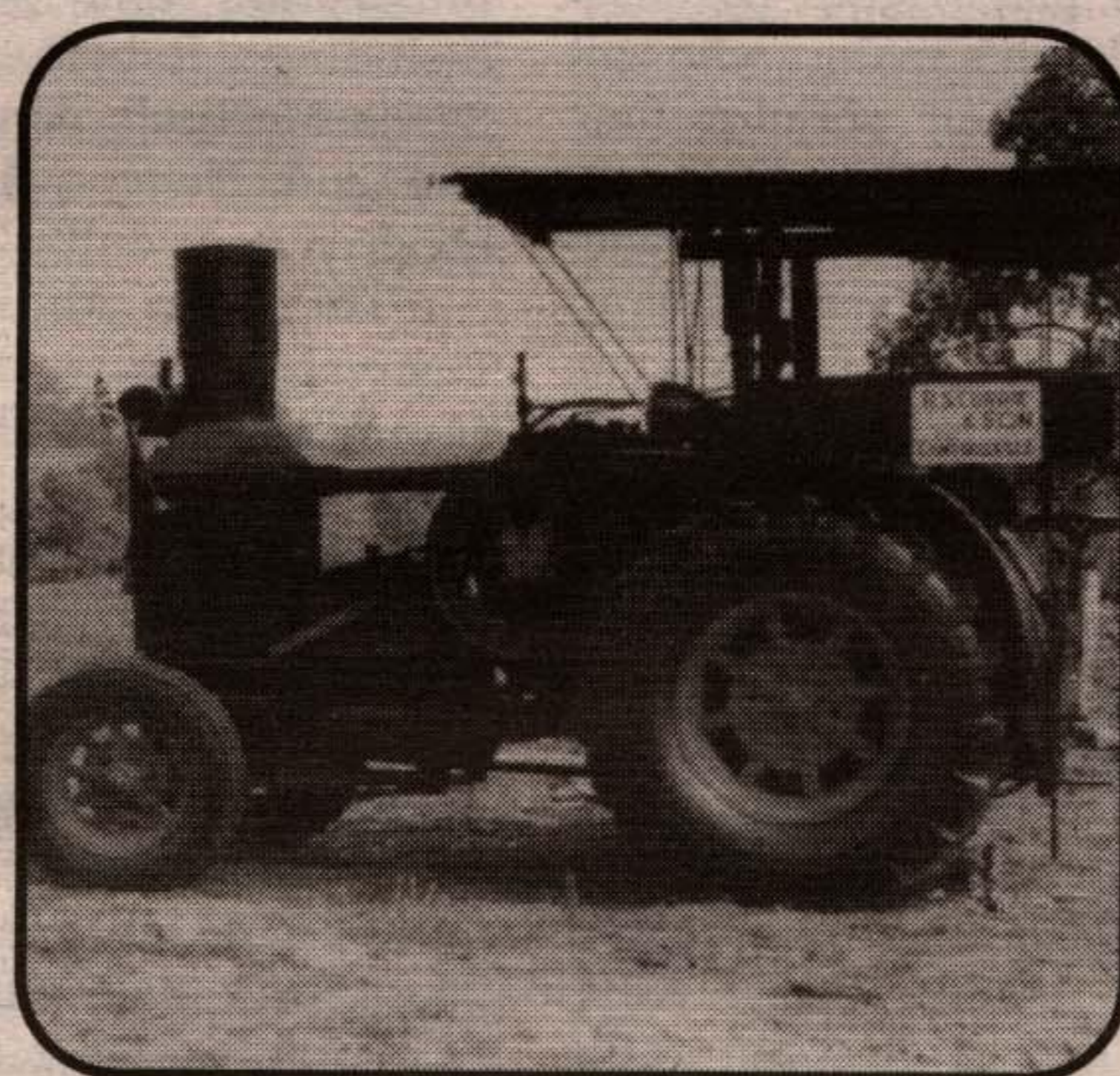
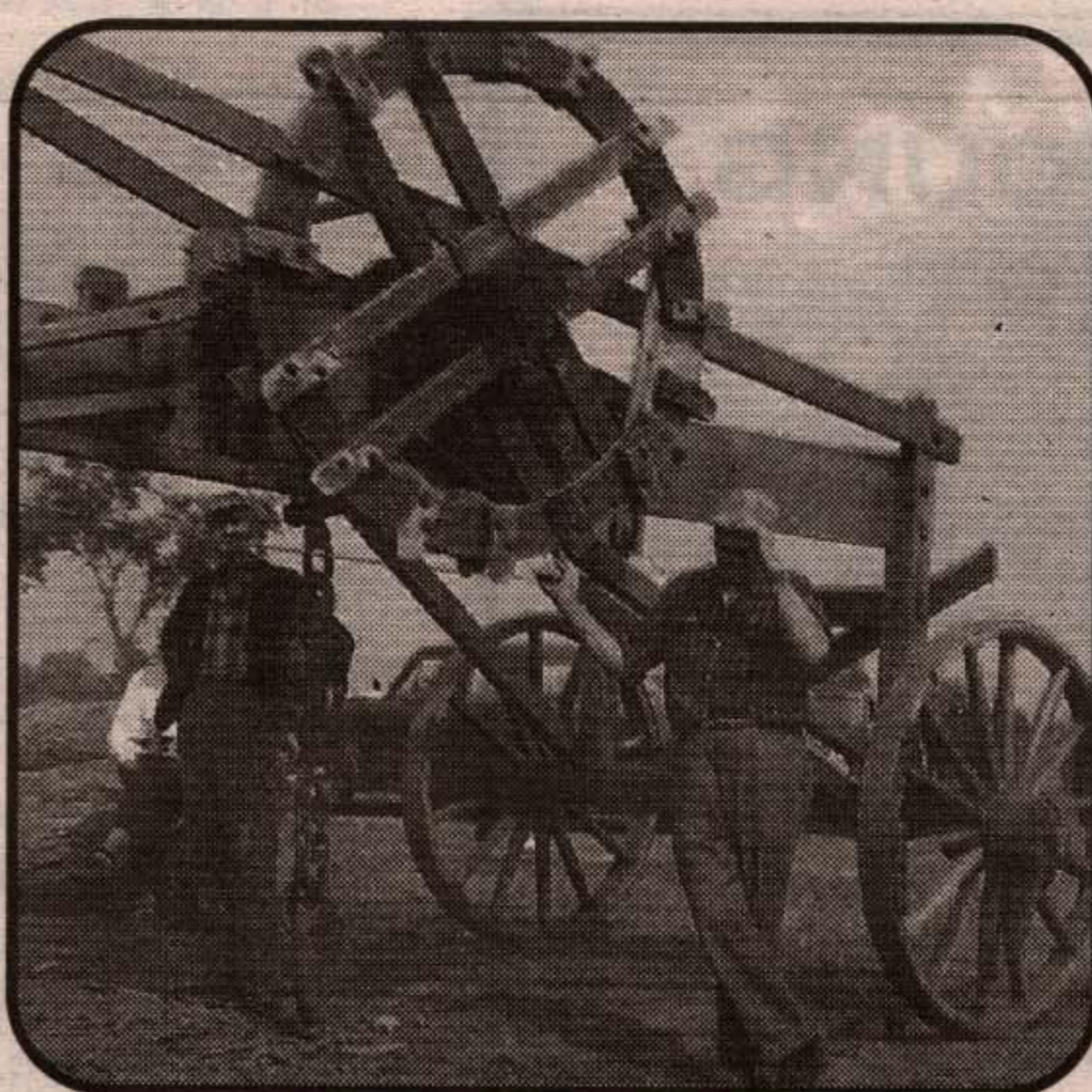


Bob Lowe in costume for Pioneer Power Reunion

Stokes Brother's
Stone Lifter

Pioneer Power
Reunion

~ circa 1960 ~



Smitten Currie's
Rumley 25-40

Pioneer Power
Reunion

~ circa 1960 ~

1916 Waterloo 20 -22 HP

L. to R. - Owner's Andrew Laing and William Gilbertson



Gilbertson & Laing's Waterloo Steam Engine
~ circa 1960 ~



Pictured at Pioneer Power Reunion, Les Lowe Farm

Halton
Country Inn



Bob and Virginia

Sprostrnov

are pleased to invite the
community to their

Autumn Pig Roast

Saturday, September 19th

7:00 p.m.

\$12.00 per person

Disc Jockey

Come to the Mountain and
enjoy an evening of unlimited
feasting and dancing.

~ Prizes ~

905-876-3018

(SIXTH LINE NASSAGAWEYA)

X	6th Line	Highway 25	JOIN US FOR
			"MUSIC ON THE
			MOUNTAIN"
	Campbellville Sd. Rd.		September 20TH
	Highway 401	Milton	2:00 P.M.

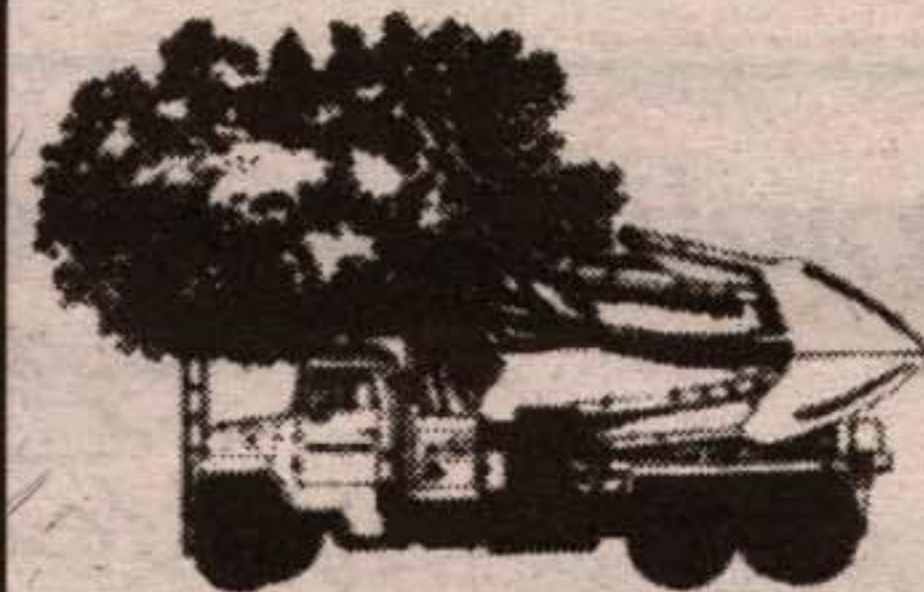


Douglas Wood

Large Tree

Services

**"we transplant
and
sell large trees"**



Five Mobile Trucks

with

Spades 44" to 90"

Paul Hanousek

1-519-853-2035



Lifetime member



TRE & C.A. TOWING
CS 24 HR. SERVICE



**HEAVY, LIGHT &
MACHINERY**
New 5,000 lb.
crane platform truck
with a 30 foot reach

LE, ONT.
2180

905-854-0169

Wayne Taylor

Excavating & Haulage

Septic Systems

~ Installed & Repaired ~

905-854-2632

R.R.# 1 Campbellville, ON L0P 1B0

