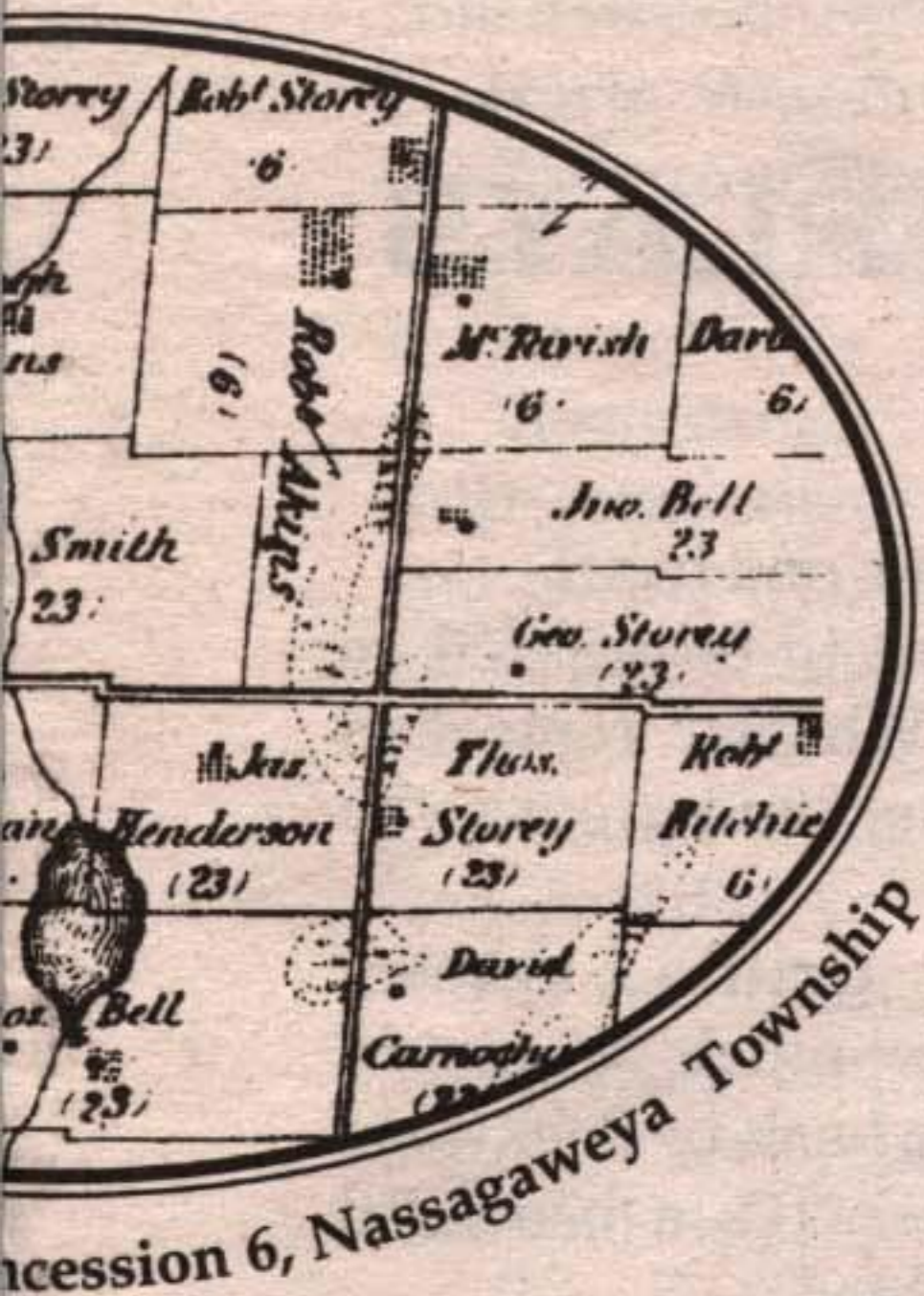
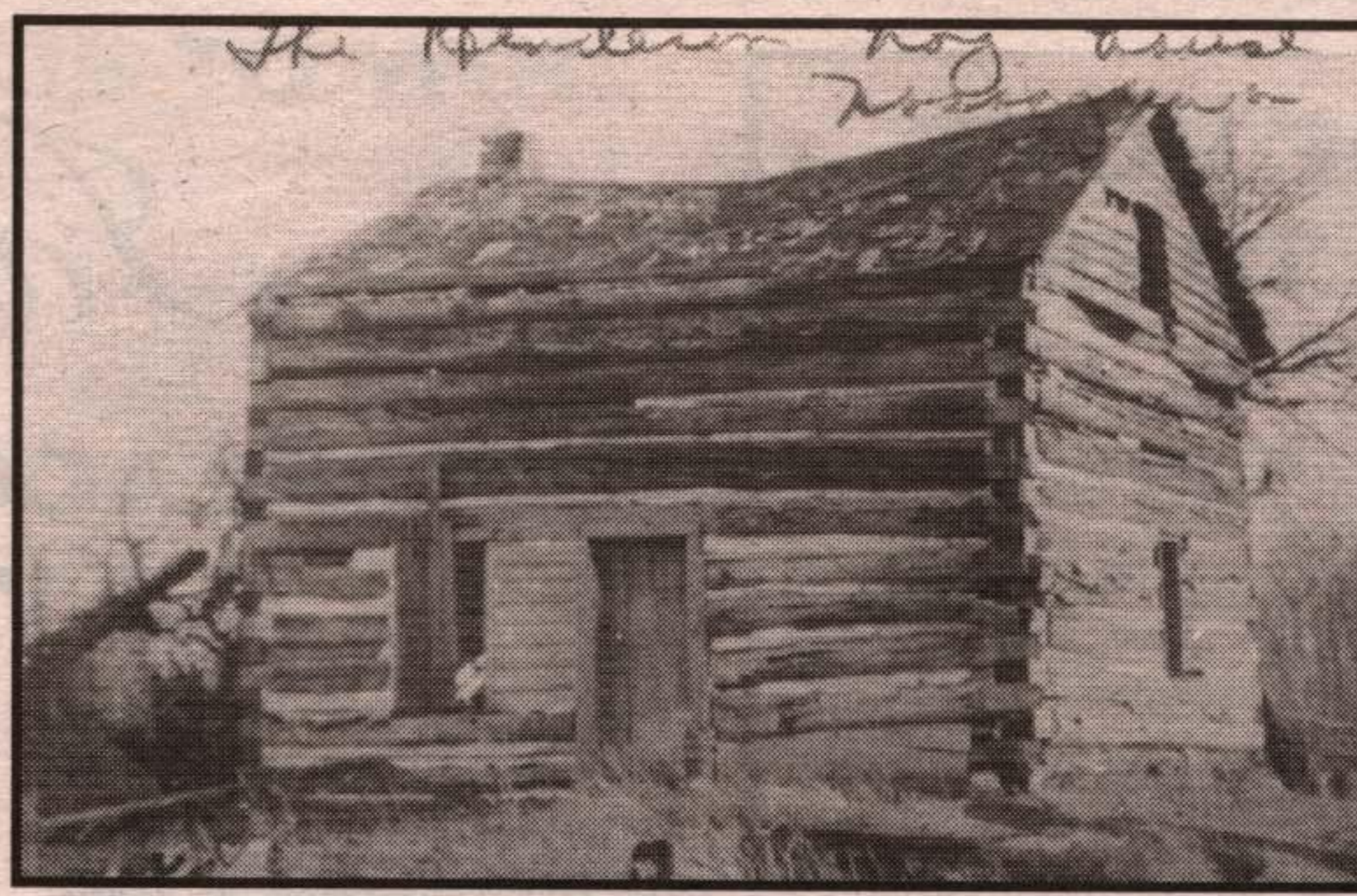


Memories



John Bell's
Log Cabin

Henderson Farm
Lot 20, Con. 6,
Nassagaweya



James, Joseph & Charles
Henderson



James & Amy
Henderson

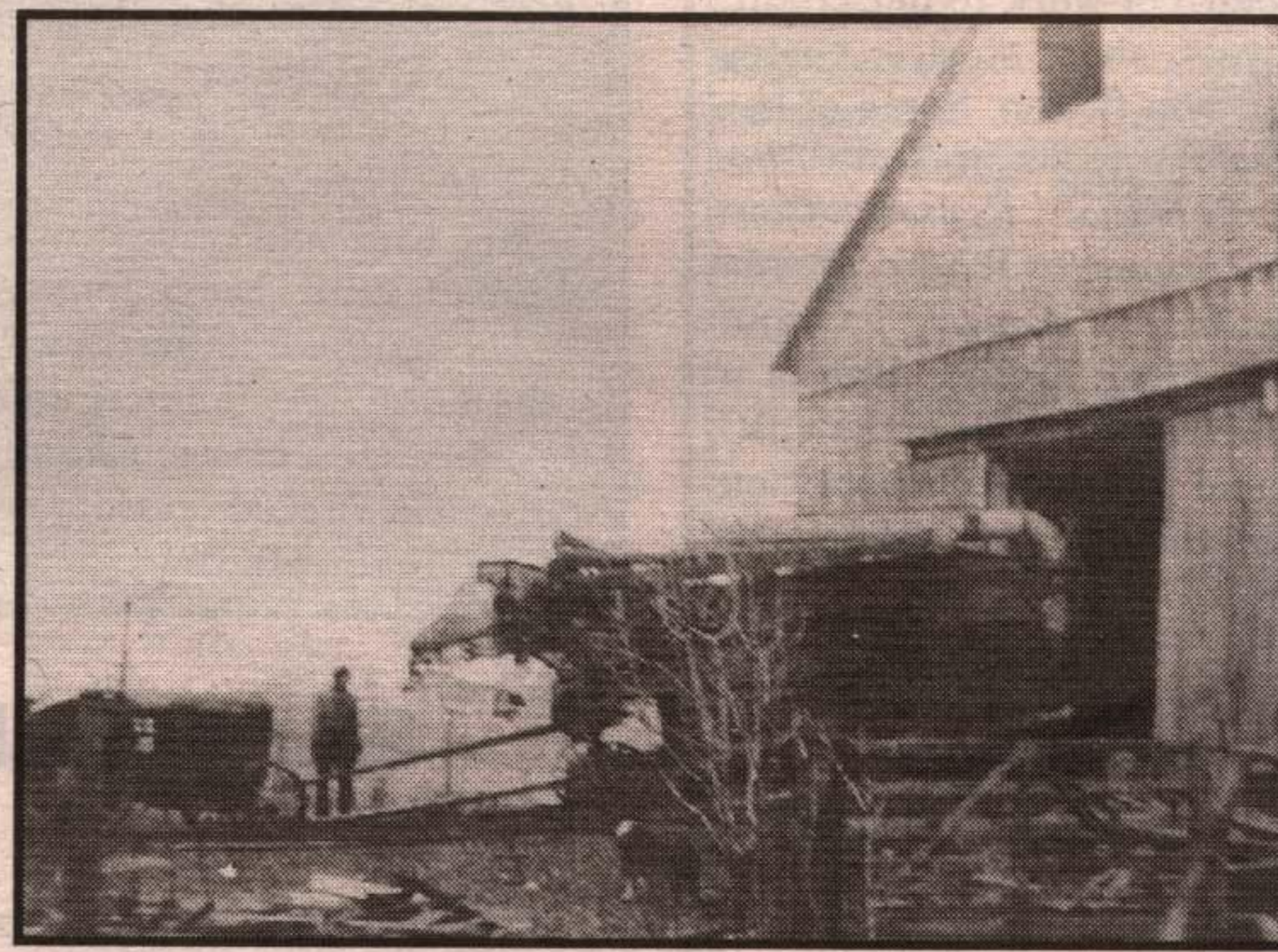


Reverend Charles & Ethel
Henderson

Allison
Thresher
at
Henderson
Barn

Lot 20, Con. 6
Farm

circa 1937



Nassagaweya S.S. No. 8, - 1921



Back Row, L to R - Earl Anderson, Jim Henderson, Joe Henderson, Dorothy Liddington, teacher Miss Myrtle Boyd, Alice Storey, Winnie Hyde, Mabel MacGregor, Elsie Story. First Row - Anna MacGregor, Wilma Storey, Sandy Wallace, Ken Wallace, Mel Storey, Gordon Blacklock, Harold Liddington.

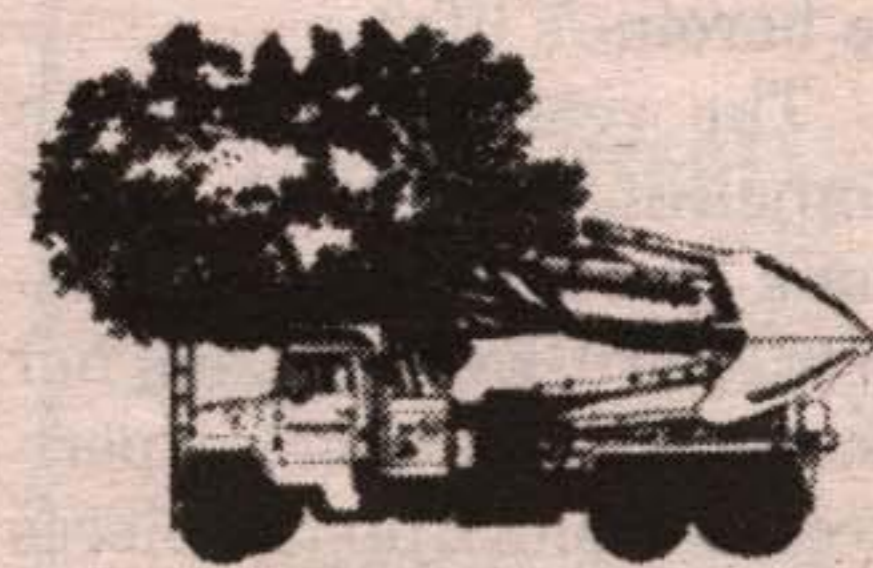


Douglas Wood

Large Tree

Services

**"we transplant
and
sell large trees"**



Five Mobile Trucks

with

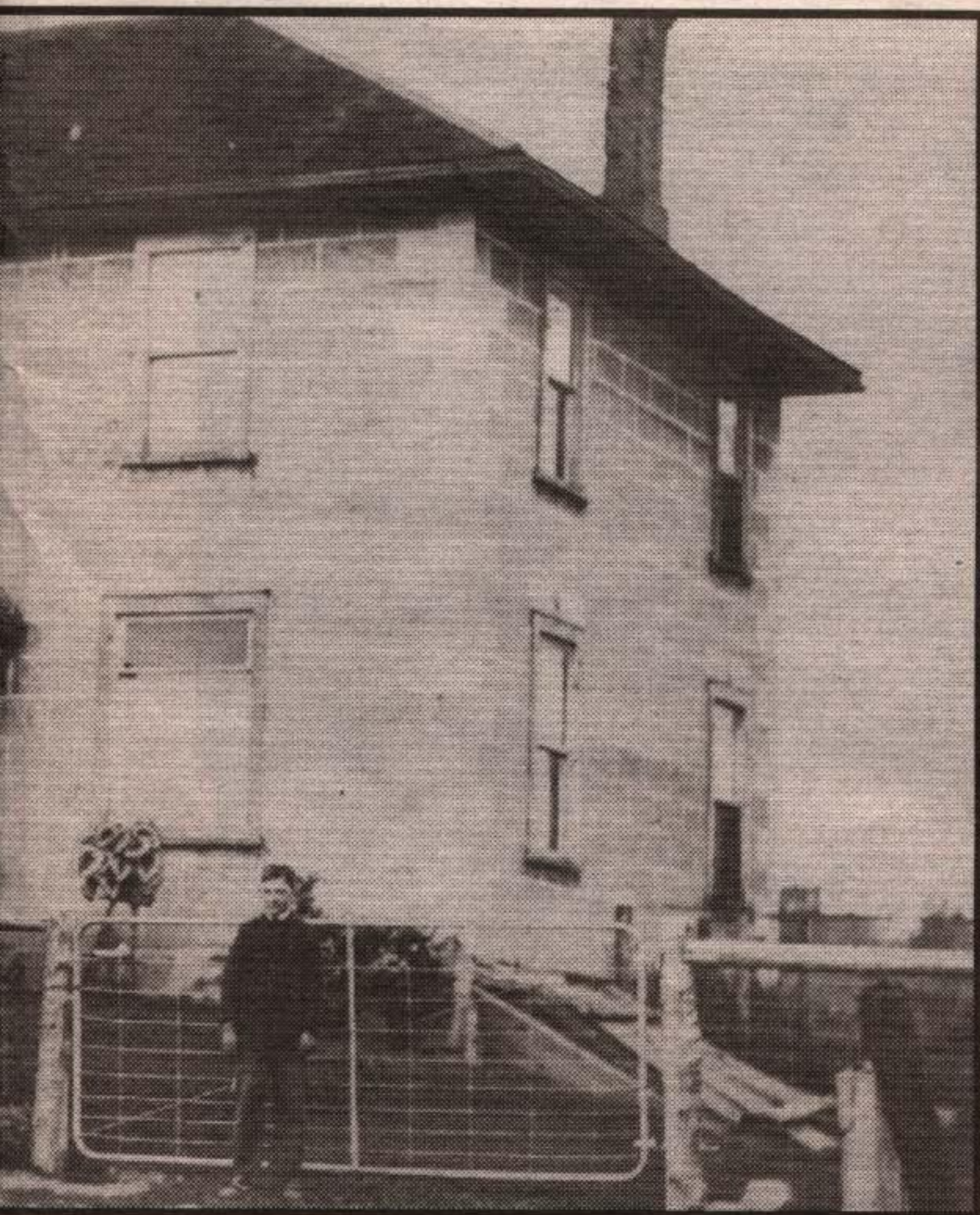
Spades 44" to 90"

Paul Hanousek

1-519-853-2035



Lifetime member



Lot 20, Con. 6, Nassagaweya - 1925

Owned by John Jeremiah and James Little Henderson

Henderson — Edward Hagerty
b. 1874, d. 1918

Partial - direct line only for Lot 20, Con. 6 Family. Photos and background information courtesy of Joe Henderson, Charlie Henderson, Amy Henderson and Mary Smith.

Henderson — Elizabeth Richardson
b. 1876, d. 1949

Henderson — Alexander Crawford
b. 1875, d. 1949

John Joseph Henderson
b. 1909

Henderson — Agnes Jane Little
b. 1880, d. 1936

James Little Henderson
b. 1911, d. 1974

Henderson — Joseph Orton
b. 1882, d. 1955

Charles David Henderson
b. 1918

**Acton
Leathertown
Festival**

~ DOWNTOWN ACTON ~

SUNDAY AUGUST 9, 1998

11:00 a.m. ~ 5:00 p.m.

**What's
ON!**

Kellogg's Karavan

featuring
Back Street Boys Karaoke,
visits from Kellogg's
characters, free samples
& lots more!

T.G.I. FRIDAY'S BLENDERMOBILE
COMMUNITY & BUSINESS SALES

ROYAL OAKS STAGE BAND

CHERI LINDSAY DANCERS

ACTON CITIZEN'S BAND

CHILDREN'S VILLAGE

GREAT FOOD

CRAFT SALE

good food

good times

good music