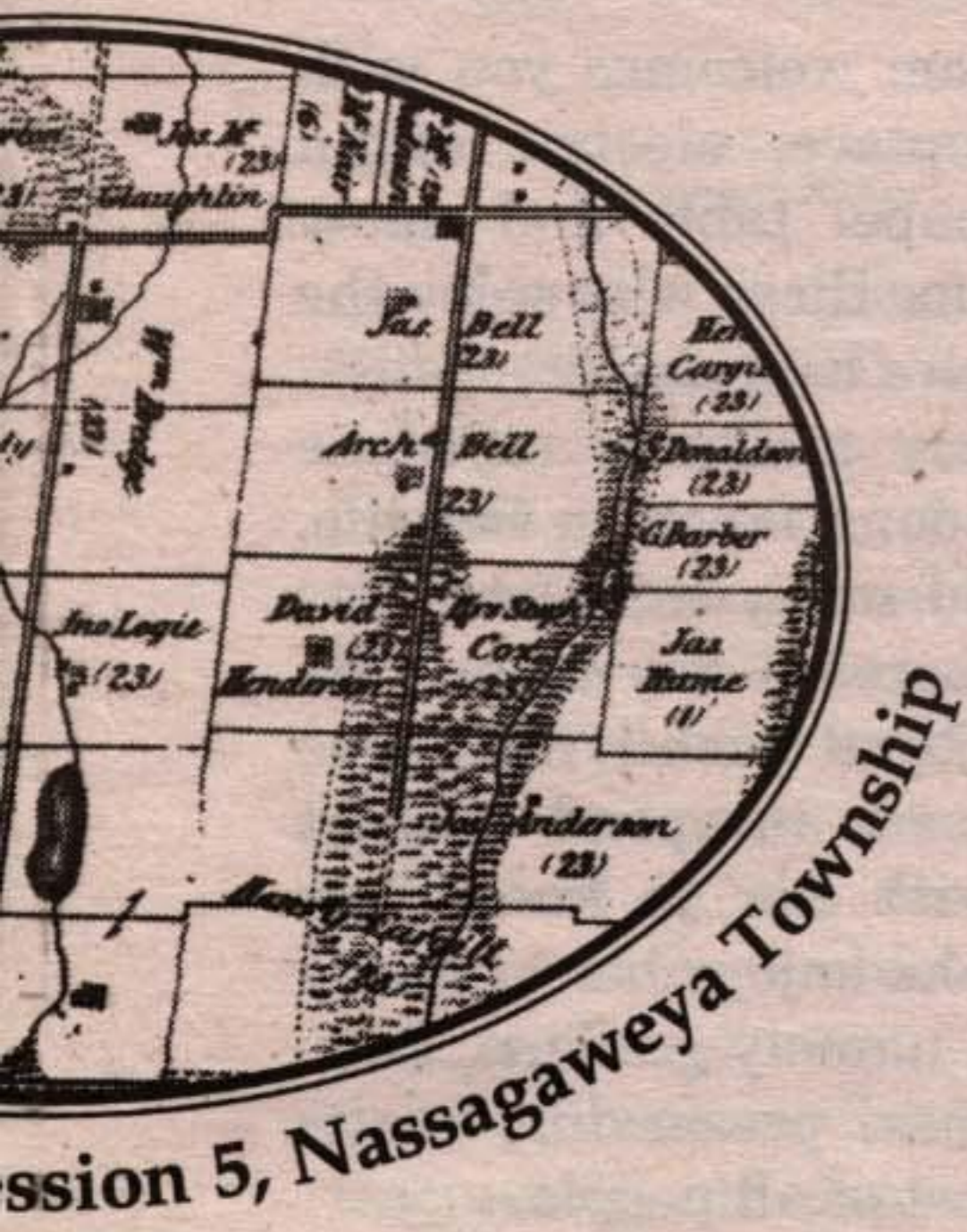


# Memories



land, came to Canada in 1892 at the age of 13. In care of the Ted Britton family in Nassagaweya Township where

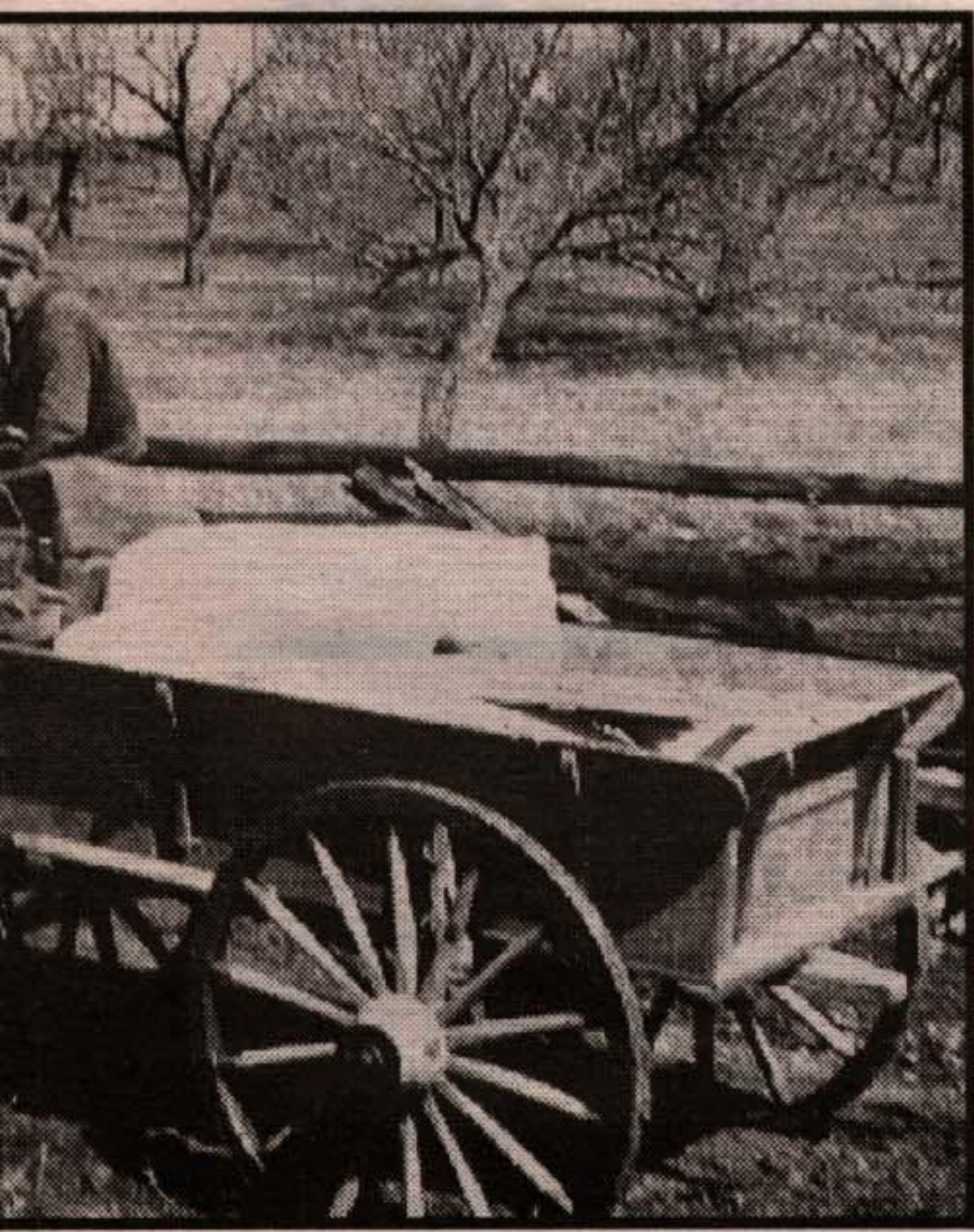
with the David Irving family on Lot 13, Con. 4, in partnership with the Irvings. In 1900, John returned to visit his father and then returned to Canada.

The newlyweds lived in a little house on Guelph Line across from their eldest daughter Velma was born. About 1905, the John Wilson family where John and Hannah's other four children

and when he and Hannah bought the old Logie homestead across from the Irvings' back lane. John and now son Jack, the Logie homestead became the John Wilson family home. After clearing land, John and his son Jack cut softwood for the old firewood from the farm's fine hardwood bush. John was one of the Township.

the homestead on Lot 14, Con. 5. John and Hannah's son Jack, who died in 1947, John and Hannah moved from the Lot 13 farm to their daughter Mary and son-in-law Chris Frank took over the place. Her father Wilson didn't have long to enjoy his well-earned rest

(Mrs. Albert Harris); John (Jack) William; Margaret Jane, (Mrs. Vera May, (Mrs. Albert Harris).



John in the Irving Orchard

1925

Isabella Wilson — John James Kennedy  
b. 1899, d. 1980

William Wilson — Marguerite Kennedy  
b. 1899, d. 1976

Margaret Jane Wilson — Neil Campbell Martin  
b. 1904, d. 1986

Charlotte Wilson — Christian Frank  
b. 1906, d. 1971

Wayne Wilson — Albert Arthur Harris  
b. 1913, d. 1962

Information courtesy of Margaret Martin, John Wilson, Pearl Kennedy and Marie Kennedy



Larry Martin & Grandma  
1955

Wedding Day  
1939



Albert & Vera Harris



Neil & Margaret Martin  
Heatley Farm  
1946

Hannah Wilson's 90th Birthday Party



Back L to R - Velma Kennedy, Jack Wilson, Margaret Martin  
Front L to R - Vera Harris, Hannah Wilson, Mary Frank



Wilson Family Home - Lot 13, Con. 5, Nassagaweya Twp.

Logie Homestead

circa 1925

Four Generations of the John Wilson Family



Front row - J.J. Kennedy, Wayne Howden, Marguerite Howden, Velma Kennedy  
Back row - Sarah & Thomas Kennedy, Hannah & John Wilson

## Halton Country Inn



featuring a nine hole golf course  
ideal for seniors and beginners at a  
reasonable price...

### 1998 Prices

\$10.00 per 9 holes

\$14.00 per 18 holes

### Seniors & Children

\$ 8.00 per 9 holes

\$12.00 per 18 holes

### Memberships

\$275.00 for Seniors

\$325.00 Regular Membership  
(prices do not include GST)

905-876-3018

R.R.# 3  
MILTON, ONT.  
L9T 2X7  
(SIXTH LINE NASSAGAWEYA)

## CONGRATULATIONS TO THE NORTH HALTON COMPASS

ITS FOCUS ON THE EARLY  
FAMILIES OF THE AREA AND  
COMMUNITY HISTORY WILL ADD  
A RICHNESS AND DEPTH TO  
REPORTING ON AREA EVENTS.

WE AT THE JOINERY SHOP  
ALSO HAVE A STRONG  
INTEREST IN THE HERITAGE  
OF THIS AREA.

WE BUY, SELL AND RESTORE  
ARTICLES WE HAVE ACQUIRED  
FROM LOCAL FARMS AND  
HOUSES. IN OUR OWN WAY,  
WE ARE PROMOTING INTEREST  
IN THE MATERIAL HERITAGE OF  
OUR COMMUNITY.

CALL US IF YOU HAVE  
FURNITURE, QUILTS, HOOKED  
RUGS, PAINTINGS, FOLK ART,  
TOOLS ETC. FOR SALE

BARRY EZRIN  
(519) 766-1435

the Joinery  
shop

R.R.# 1  
MOFFAT, ONT.  
LOP 1B0