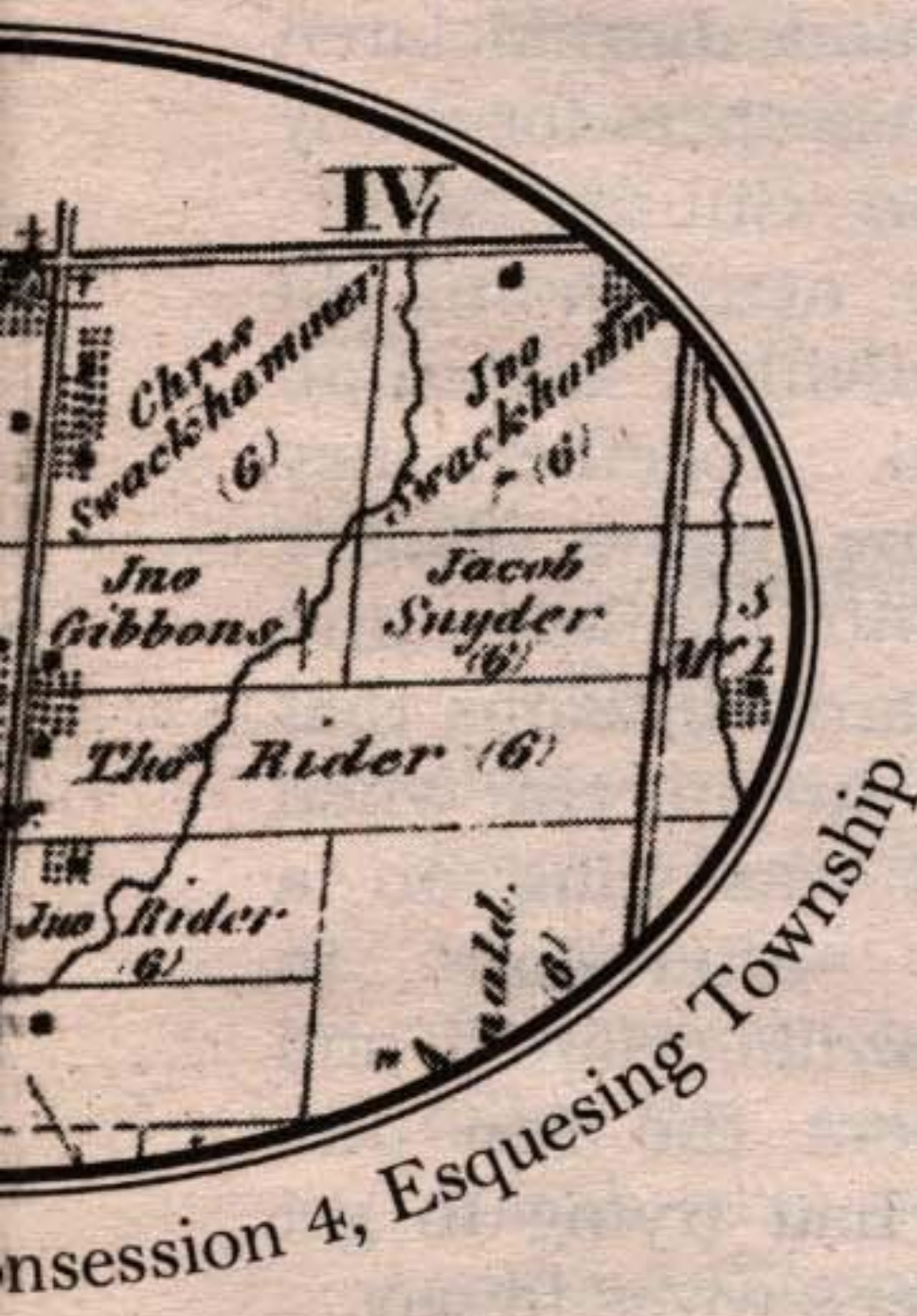


Memories



... arrived on the "hill" in about 1820.

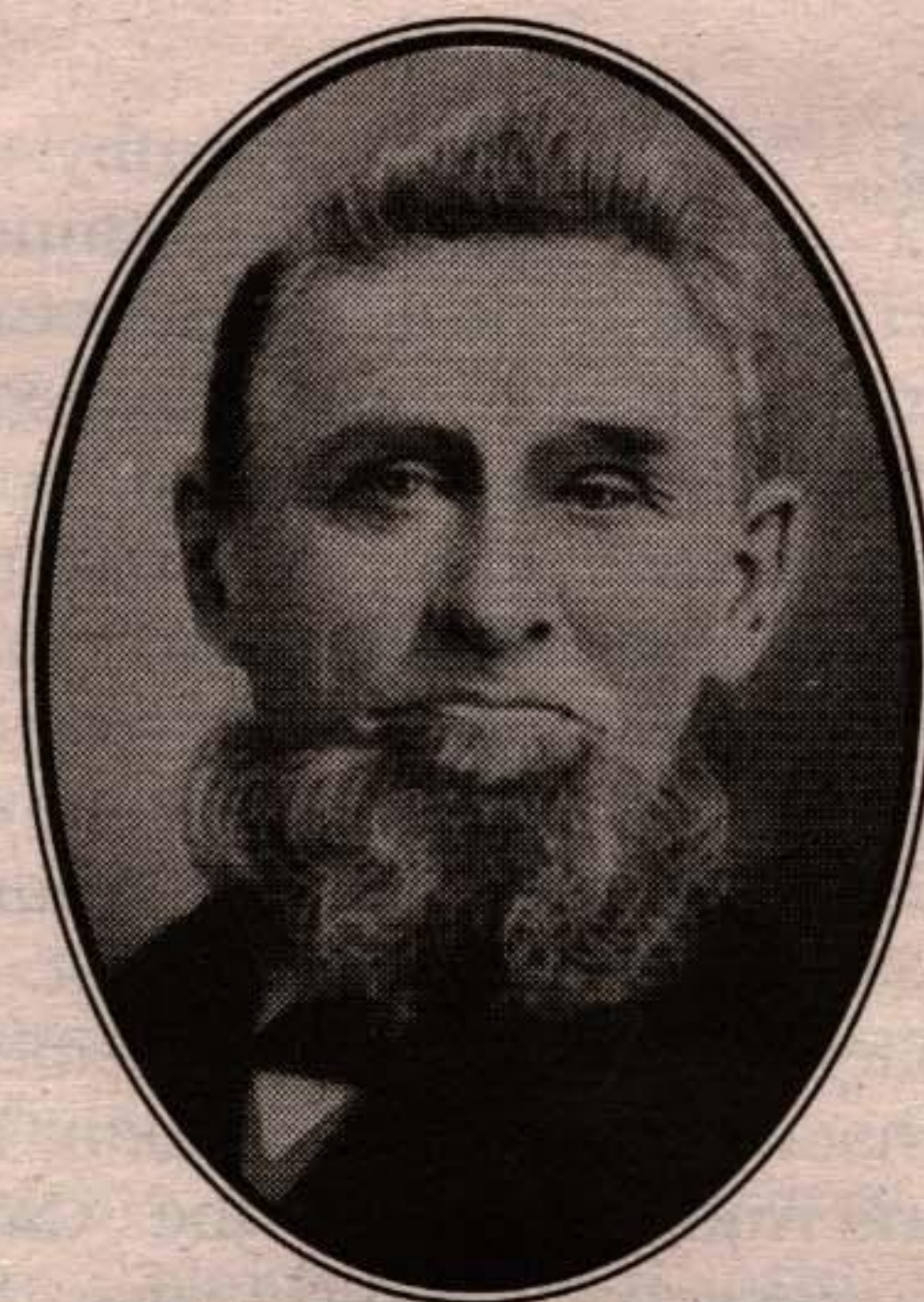
... and David took up land grants they had petitioned for following Elizabeth and Christopher, two brothers Isaac and Robert, ... to the Acton area as well. Originally, the family had emigrated in the 1700's.

... the northwest corner of his farm for the first burying ground. The community had grown enough for a separate church to be organized, which was built across the road from the burying ground. For Christopher Denny, a well known saddle bag minister.

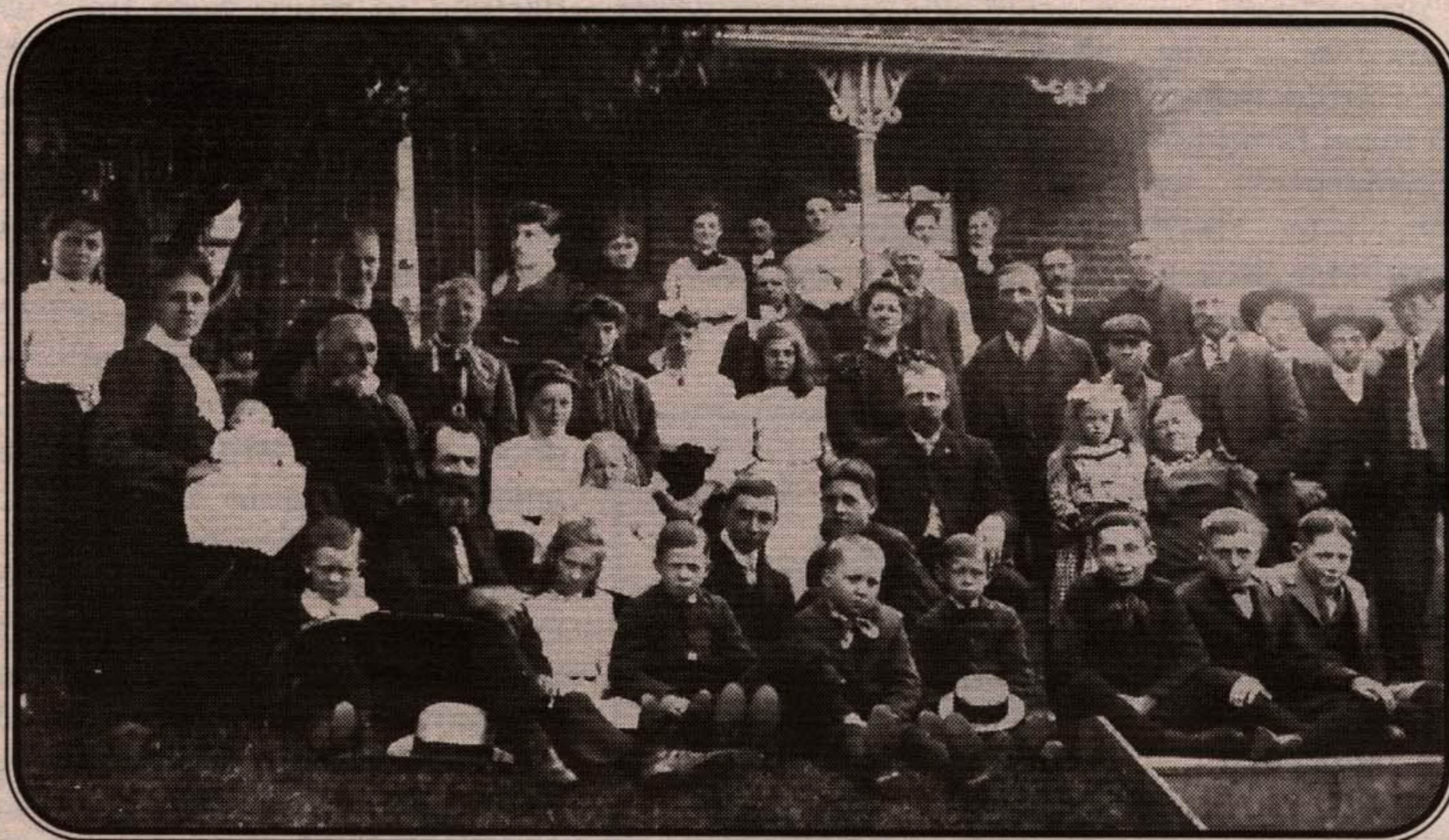
... Christopher married into the Denny family and later the son of his only brother Hiram became a hotelkeeper and farmer, building and quarrying. Several held office as reeve and justice. The original farm was inherited by Clinton Bennett and later by Elizabeth Lasby. In his younger years Clinton worked as a surgeon in Acton. At the time of his death in 1959, the farm in the 1970's the original land grant was operated as a dairy farm.



Mary Elizabeth Denny



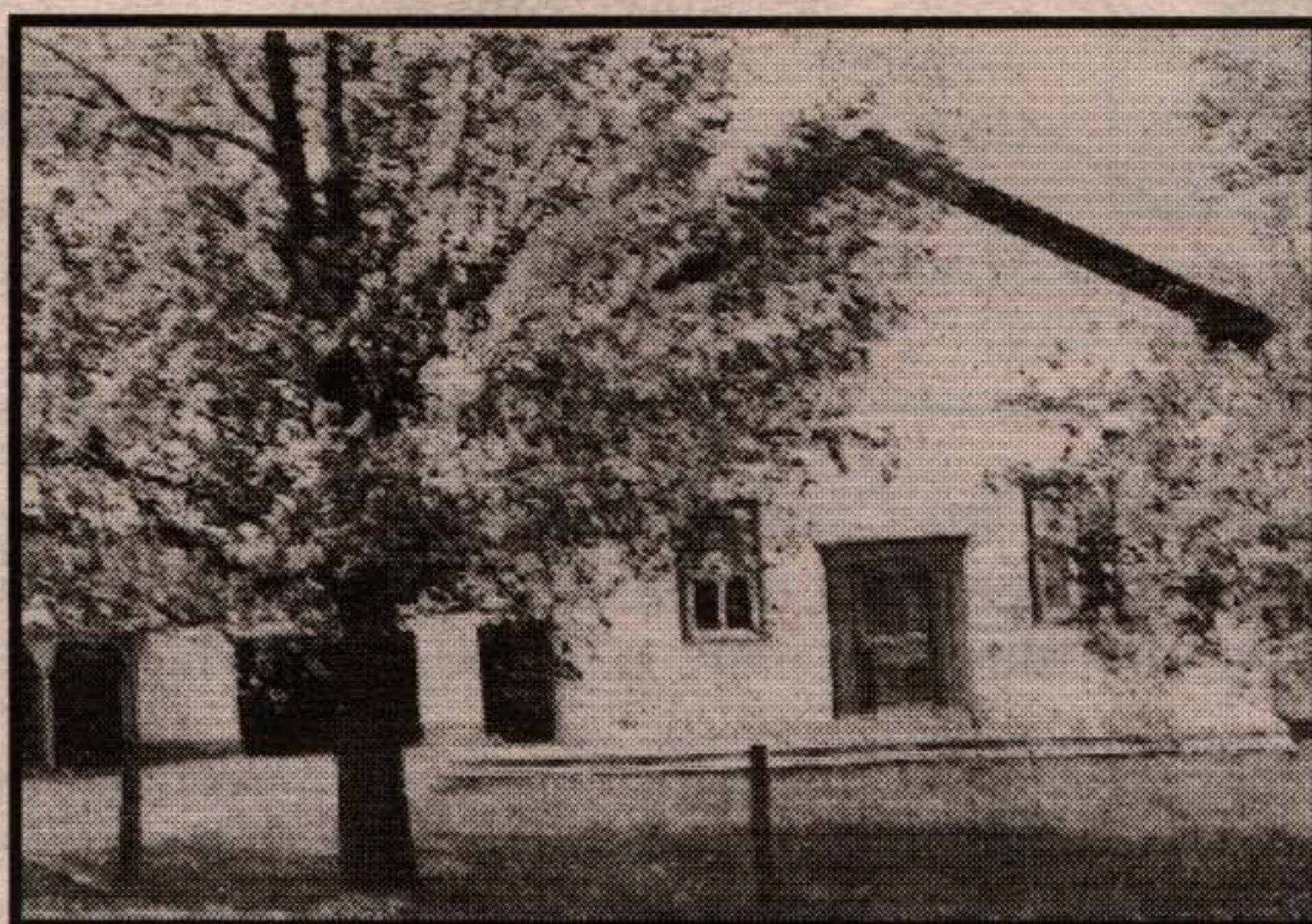
Christopher Swackhammer



Annetta MacKay, Augusta Wansborough, Harold Wansborough, Esther Swackhammer, Christopher Swackhammer, Joe Swackhammer, Mary Leslie, Robert Wansborough, Annetta Barnes, Alice Pearen, Elva Pearen, Anna Wansborough, Jennie Swackhammer, Minnie Burton, Roph Swackhammer, Pearl Hunter, Lela Wansborough, Roy Swackhammer, Edward Pearen, William Swackhammer, Gertrude Swackhammer, Emma Denny, Mrs. Hiram Swackhammer, Brant Swackhammer, Frank Swackhammer, Marilla Griffin, Joel Leslie, Ella Swackhammer, Jacob Swackhammer, Ross Swackhammer, Peter Hilts, Smith Griffin, Stanley Swackhammer, Berdina Swackhammer, Harry Griffin Hilts, Austin Swackhammer, Frances Swackhammer, Cecil Swackhammer, Clinton Bennet Swackhammer, Arthur Swackhammer, Roy Wansborough, Harold Griffin (not in order)

R FAMILY TREE

b. 1793 d. 1874
 |
 m Elizabeth Thompson d. 1818
 |
 Children: Eleanor & Elizabeth
 d. 1890
 |
 et, Catharine Jane, **Christopher**,
 and Marillia, Phoebe Cordillia,
 Roxsena, Caroline Lucinda
 |
 Swackhammer b. 1824 d. 1914
 |
 d. 1876
 |
 Zimmerman b. 1842 d. 1926
 |
 d. 1967 m. Ina Grace Denny
 d. 1958 m. Netta Elizabeth Lasby
 partial - direct line only for Lot 32, Con 4 family



Churchhill
 Congregational
 Church



Front row, L to R: Frank Swackhammer, Harold Griffin, Edwin Barnes, Christopher Swackhammer, Harold Wansborough, Ina Swackhammer, Harold Swackhammer, Beatrice Pearen, Elva Pearen, Arthur Swackhammer, Mr. Wansborough.
 Second row, L to R: Alice Pearen, Joel Leslie, Anna Wansborough, Elsie Barnes, Nora Denny, Smith Griffin, Rilla Griffin, Nettie Barnes, Esther Swackhammer, Ella Hilts, Augusta Barnes, Austin Swackhammer, Mary Leslie, Jacob Swackhammer, Robert Wansborough.
 Back row, L to R: Lela Day, Minnie Maclin.

Memories
 is month by

LACK, M.A., LL.B.
 SOLICITOR

& Personal
 Residents
 inesses

of experience

Bus: (519) 856-4555
 Fax: (519) 856-4680
 Res: (519) 856-4063