

MARKETPLACE!

CE COUNTS"

Mississauga
4-3040

Oakville / Burlington
(905) 875-2143

JOHNSON ASSOCIATES
HALTON LTD., REALTOR

247 Guelph St.,
Georgetown, Ont. L7G 4A8

877-5165

FOR SALE

JOHNSON ASSOCIATES
HALTON LTD., REALTOR

Performance Counts



HIGHWAY COMMERCIAL
High exposure on busy highway operating as gas bar garage variety. Owner retiring. Great opportunity at \$299,000.

Bill Ellis* 96-429-95



GEORGETOWN COUNTRY HAMLET - \$174,900

Hamlet living less than 10 min. from Georgetown GO train. Charm & character everywhere. Exceptional treed back yard, backing onto conservation. Home features 2 kit., beautiful sun room w/adjacent den, sitting room w/woodstove. 5 bedrooms. Don't wait! Call Larry*

96-508-31



ERIN - 2.3 ACRES WOODED PARADISE

Extremely private customized Viceroy bungalow with vaulted ceilings, w/os, 1 1/2 baths (jacuzzi tub), hi-eff. gas furnace, town water - yet wildlife abounds, even deer out back. \$259,900

Sandra Naim* 96-494-91



\$349,000

RUSTIC AND BEAUTIFUL

18 private acres with long views, pond, paddocks, bush with trail & rolling meadow. Exceptional "one of a kind" stone & log home. Gleaming wide plank floors, bright spacious rooms, cathedral ceilings, central stone fireplace on two floors.

Larry* or Martha* 97-101-91



CHARMING HALTON SCHOOL HOUSE

Great 1/2 acre in rural Georgetown backs onto farmland - modern kit., baths, gas furnace, c.c., fully equipped master suite. Original tin ceilings, school lights sparking sun-drenched & full of character. \$214,900.

Sandra Naim* 96-428-31



GREAT TASTE!

This 2500sq ft. site on magnif. scenic ac in Campbellville area above 401. Elegant & gracious describe this home suited to exec. family. Beautiful long windows overlook pond & gazebo & treed acreage. Fin. top to bottom allowing about 5000sq ft. of fin. flr. space. Extra special kit., beautiful bathrms, 3 F/P's, 2 dbl gar & top quality thru-out. \$399,900.

Glenda Hughes* 96-461-90



THE BEST OF COUNTRY

7 years young with large principal rooms and lovely views of the surrounding countryside. Gas fireplace, oak kitchen, main level office plus 4 bedrooms, low maintenance with Decra-bond roofing.

Martha Summers* 96-495-91



BUSINESS OPPORTUNITY

Turn key operation, all equipment and tools, running stock, financial papers available to serious buyers, service truck (1992) Ford F150, sign & phone number.

Call Rick Curry* 96-439-91



THE MCLAREN CASTLE

1865 limestone castle in prime 10 acre Caledon location. 4200 sq. ft. of absolute quality and history. \$659,000.

Martha Summers** 96-351-60



BEAUTIFUL 62 ACRES

Home in need of major loving care, 2200 reforested, mature trees, 20 acres approx. of pasture, creek bordering north side of property. Very private with a great view.

Call Rick Curry* 96-423-91



BEAUTIFUL COUNTRY PROPERTY

Fabulous land, pond, stream, very well maintained 4 bdrm. home with 2 fireplaces and a sunroom. Minutes to Georgetown and Erin. Offered at \$279,000. Call for more.

Kathy Ellis* 96-390-91



PICTURE PARADISE

Privately located at the end of a long tree lined drive, immaculate 3 bdrm w/main floor den, family room w/fireplace, walkout to exceptional deck & yard w/pool, modern barn shop w/4800 sq. ft., 13 acres of trees, trails & views.

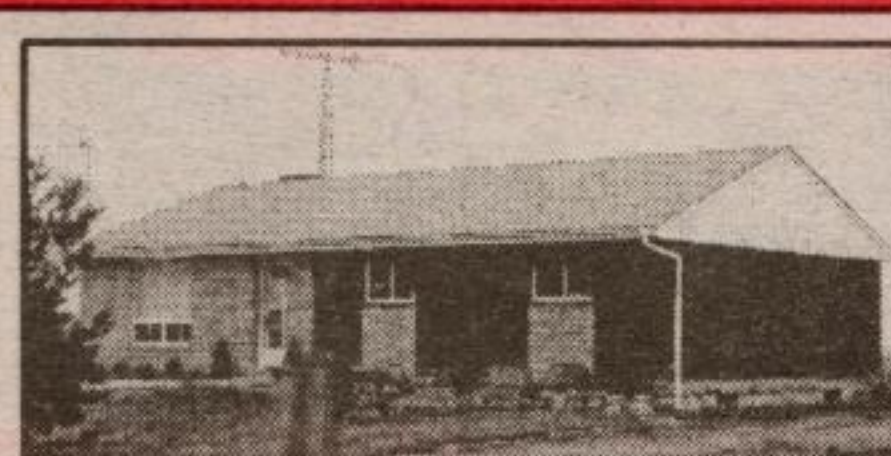
Call Larry Barnstaple* 97-100-90



OPEN CONCEPT

with wonderful country view on 58 prime acres. Custom built with quality and style in mind. Approx. 4500 sq. ft. main level plus an additional 4500 sq. ft. on three other levels, 360 degree views from the vaulted ceilings, 3 car garage, stream and utility building. \$749,000.

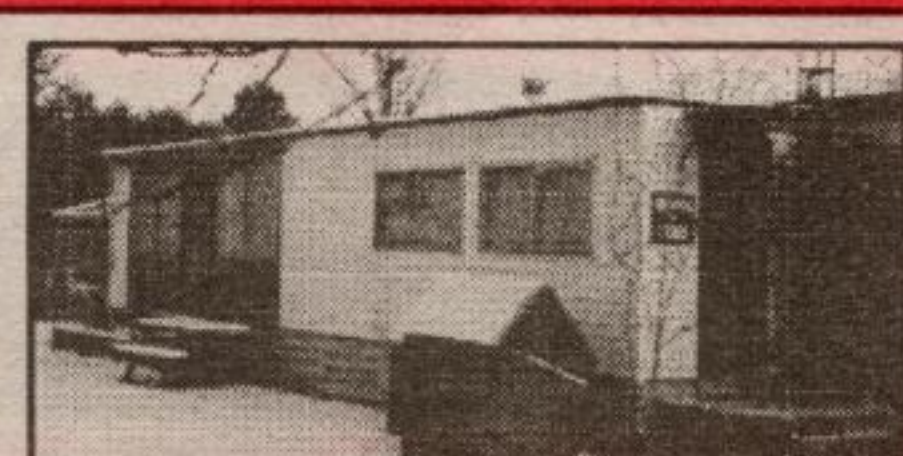
Martha* or Larry* 96-273-91



COUNTRY ACRE

\$119,900. Spacious 3 bedroom bungalow. New country kitchen, many upgrades, 2 baths, great country views, close to highway.

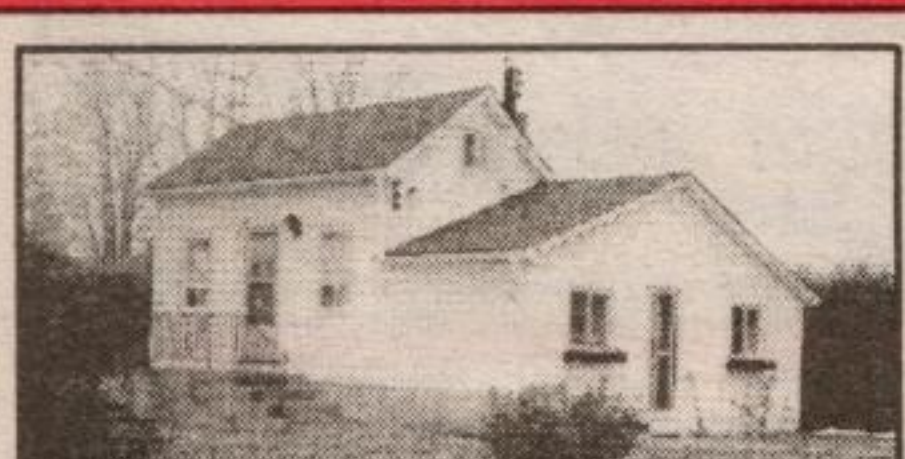
Larry Barnstaple* 96-462-99



\$67,000. CALL NOW!

2-3 bedroom mobile located on a 50 x 100 ft. leased private lot. 5% down is possible to qualified purchasers. Call now for details.

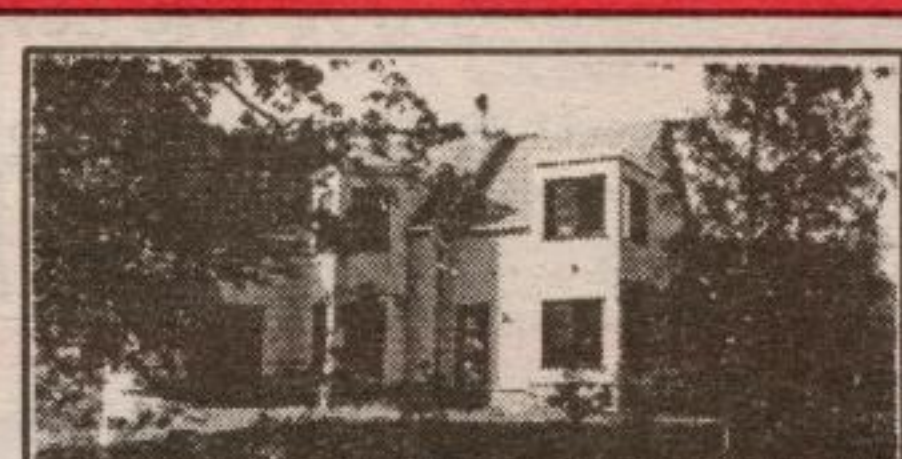
Rick Curry* 96-342-90



COUNTRY LIVING

Charming home in small hamlet near Georgetown. Includes 5 appliances, shed, mud room, loft. Cedar hedge surrounds the property. \$164,900.

Call Jim Akers** 96-506-91



15 ROLLING COUNTRY ACRES

Custom designed with European influences. Abundant natural light, slate floors and roof, high ceilings. South of Erin.

Martha Summers* 96-292-91



1280 SQ. FT. + FIREPLACE

Super "Briar" model has only 1 attached unit & visitor parking on either side, rec room walkout to green space & playground, includes dw, cac, fireplace, & window blinds, quiet circle & awaiting your offer.

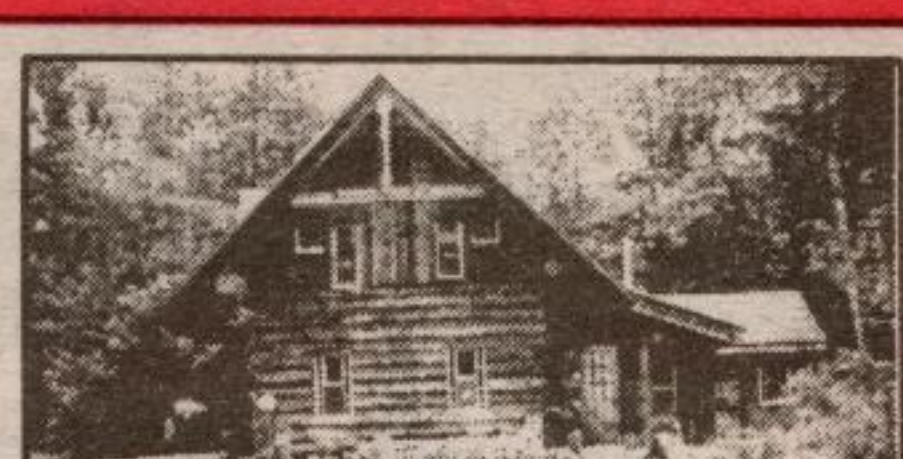
Call Sandra Naim* 96-503-30



OFFICE SPACE

Various sizes up to 1500 sq. ft. Modern professional building, central location. Call Don Sargent** at 905-874-3040 for details.

96-459-30



TWO FOR ONE SALE

Not only this gorgeous log home, but a 5 bedroom B.C. cedar ranch, all on 49 acres. Also a 22' x 40' insulated workshop

Call Pat Akers* 96-383-91

WANT AND

Excellent opportunity. 1.13 acres nicely located building lot in Erin, Multi-unit/retirement apartments possible. \$129,500 Rick Curry* 96-514-91

Lots of land! 224 acres between Georgetown & Acton. Could be great investment or for recreational uses.

Very picturesque property. Marilyn Worrall* 96-300-VL

Wonderful. Fully serviced lot w/incredible views of Caledon Hills. \$99,000. Kathy Ellis* 96-448-VL

Build your dream. If you've been looking

for a special property, let's go & walk this fantastic 3.5 acres. Listed at 78,900. Views, rolling terrain & wooded. Marilyn Worrall* 96-242-VL

Industrial building site. Easy access to 401. Located on paved road 1 km west of hwy #25. Call Wilf Moore* for list of

permitted uses. 96-212-VL

Hardwood forest beckons you, 50 ac w/superb access off Miss.Rd. S. of Belfountain. Close to riding, golf, skiing, \$225,000. Martha Summers* 96-450-VL



wry* 8393



Kathy Ellis*
Res. 877-2725



Renee Good*



Jackie Greenwood*
Res. 877-8184



Brenda Hamilton*
Res. 877-6664



John Hill*
Res. 877-8402



Glenda Hughes*
Res. 877-8402



Iris Irwin*
Res. 877-7494



Jessie Jacobs*
Res. 877-5790



wood* 7303



Pam Reid*
Res. 454-4646



Don Sargent**
Res. 838-2813



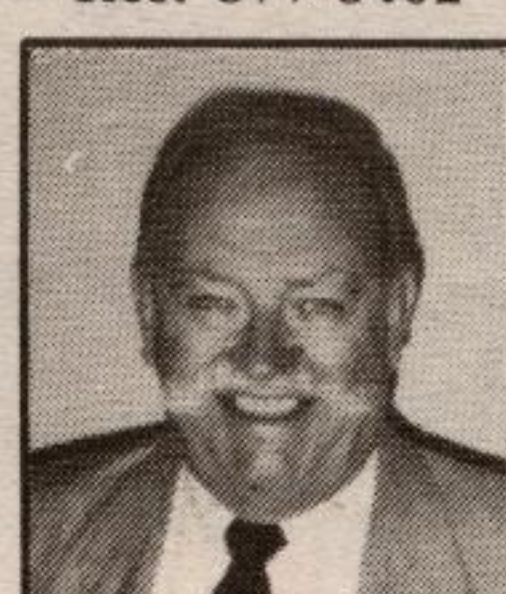
Martha Summers*
Res. 873-0655



Ralph Wesseling*
Res. 702-0704



Marilyn Worrall*
Res. 873-0650



Bill Ellis**
Res. 877-7528



Finn Poulstrup***
Broker