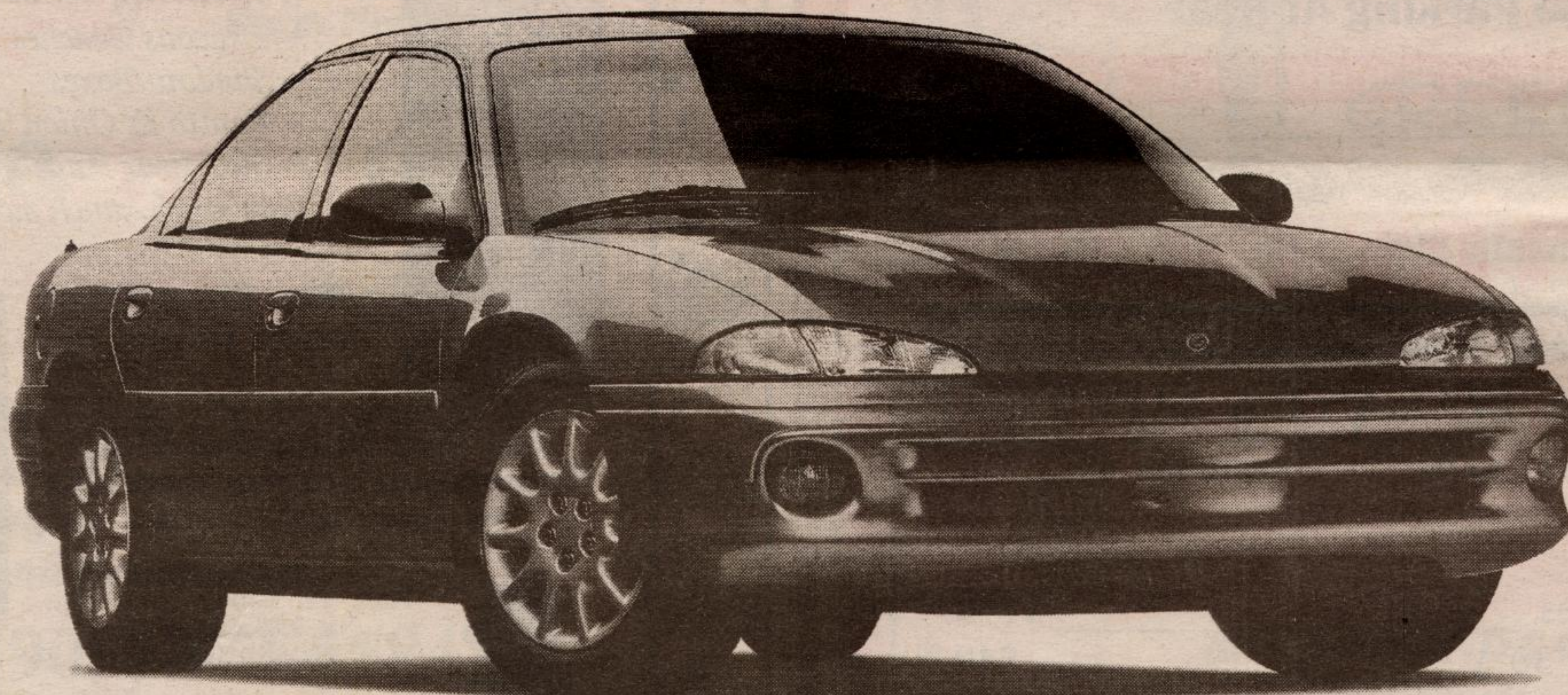


Introducing the Canadian-built family sedan that first started the revolution in cab-forward design and affordable performance. The '97 Chrysler Intrepid.



THE '97 CHRYSLER INTREPID



22C Package:

- Dual air bags
- Side door impact beams
- 3.3L V6 engine
- 4-speed automatic

- Air conditioning
- Speed control
- Dual power heated mirrors
- Power locks/windows

1997 Chrysler Intrepid

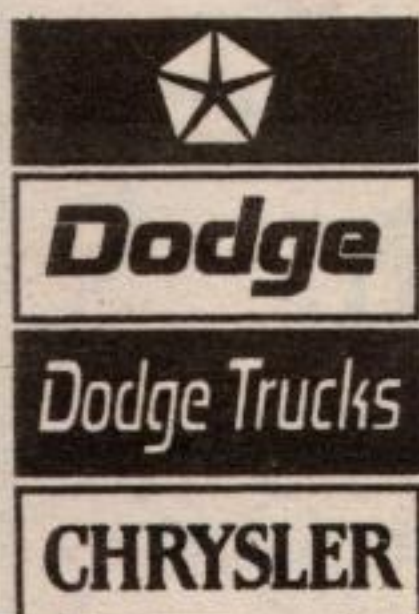
- AM/FM Stereo cassette
- Fully independent suspension
- Fog lamps
- Rear seat heat/AC ducts

\$20,988*

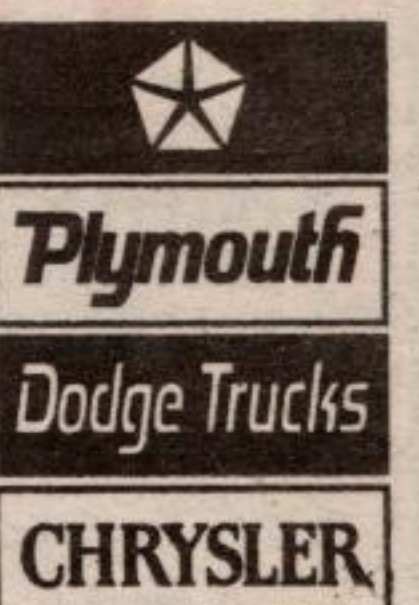
or

GOLDKey
LEASE FOR
\$299[†]
a month for 30 months plus \$2,461
downpayment, \$350 security deposit
and \$790 freight. Ask about our
No Money Down Option.

PLUS \$790 FREIGHT



†Based on a 30 month lease for vehicle equipped as described. Total lease obligation is \$11,781. Free kilometers are limited to 51,000. Charge of \$.09/km for excess kilometers. Subject to approval by Chrysler Credit Canada Ltd. This is a closed end lease with no buyback requirement. *Price includes factory rebate \$1,000, Intrepid 22C. Rebate assigned to dealer in lieu of other offers from Chrysler Canada. Rebate includes GST. †Price/lease for vehicle equipped as described, 22C package. Freight \$790, licence, insurance, registration and taxes not included. These are limited time offers and apply to retail deliveries of 1997 models from dealer inventory for personal use and may not be combined with any other offers. Dealer may sell/lease for less. See dealer for details and conditions (including no down payment plan).



GEORGETOWN CHRYSLER JEEP (1993) LTD.

336 Guelph St., Georgetown 877-0149 • 877-5108 • TOR. 874-4277