

# Dance tickets on sale now

## LEGION NEWS

BY ALISON WILLMOTT  
P.R.O., Branch 197

Tickets for the New Year's Eve Dance are available at the bar.

Price is \$35 per person, which includes a buffet, party favours, six drinks (L.C.B.O. regulations), and a fun evening of dancing. Addi-

tional drinks are available at \$2.50 each.

Sign up for cribbage, darts and euchre on the sports board. The President's Levee will be held Jan. 1, 1997.

Euchre winners for last Thursday's game were: Bea Sheppard, Eva Roberts, Helen Quinn, Fred Smith and Harold Wilkinson. Hidden score was Agita Ruddell.

Saturday's meat draw winners were early birds Ed Molody and Lene Fisker.

Dolores Black, Janice Withers, Eugene Dunlop (2), Ed Footitt, Lisa Rhynold, Don Archibald, Mary Watson, Al Robinson and Ed Molody were regular prize winners.

The large prize went to Ann Fraser.

## GRAF Investment Counsel

Independent Financial Planning, Mutual Funds, RRSPs, RRIFs, Group RRSPs

- Asset Allocation to meet your long and short term goals
- Objective second opinion on existing portfolio at no cost
- Multigenerational Planning, Education Savings Plans
- Consultations done in the privacy of your own home



"Hometown Values & Service with Big City Expertise"

21 Mill St. W., Acton 853-4686

- Associated with The Investment Centre -



YUM! Willow Cakes and Pastries was selling its wares at Tuitman's Garden Centre on Hwy. 25. From left are Janet Worfolk with business partner Catherine O'Donnell and Mayor Marilyn Serjeantson, with Brian Worfolk, 11, showing some of the goodies available. (Eve Martin photo)

### Dan C. Dolliver

ONTARIO LAND SURVEYOR

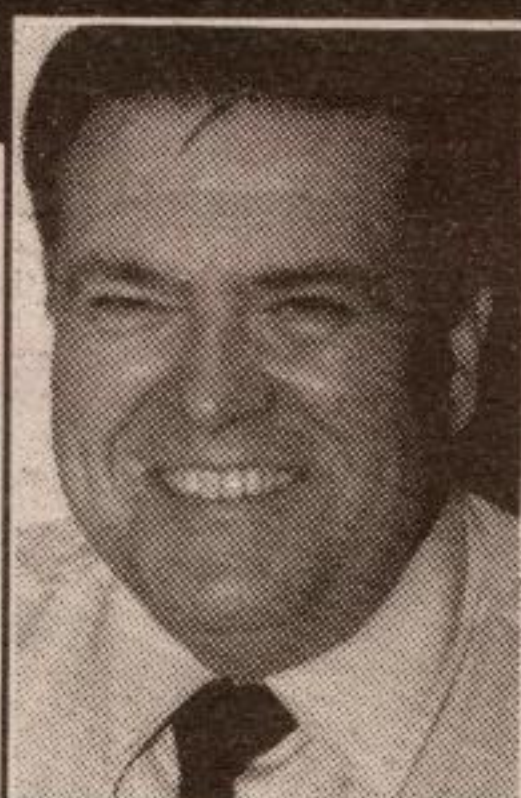
Legal & Topographic Surveys

54 Mill St. E.  
Tel. 853-2502  
Fax 853-1504



### CONSTABLE RIDDLE'S CORNER

WITH VILLAGE CONSTABLE  
BILL RIDDLE



### 2 Weeks Till Christmas

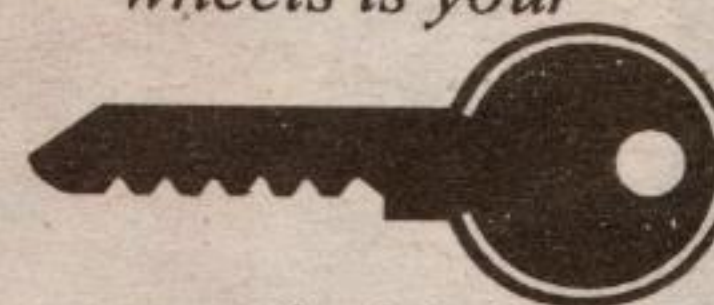
At this time of year Christmas parties and get togethers are abundant. All too often, parties try to drive themselves home, and all too often police officers have to go to someone's home and tell the family that their loved one is not coming home, ever.

1. **DO NOT DRINK AND DRIVE!**
2. Advice if you are going to a party:
  - A. Designate a driver.
  - B. Use a taxicab.
  - C. Don't be tempted, leave your car at home.
  - D. If you are the party holder you can be named in a civil suit if someone leaves your party and drives in an impaired condition and harms someone.
  - E. If someone is leaving your party and you know they are impaired, take their keys; if they will not give up their keys and start to drive, call the police. You do not want the responsibility of them hurting or killing themselves or someone else.

Remember: Don't be a victim!

### WHEELS DRIVER TRAINING

245 COMMERCIAL ST., MILTON  
wheels is your



to safe driving  
878-4135

### MACKENZIE & CHAPMAN

GENERAL LAW PRACTICE

Serving Acton, Rockwood & Surrounding Areas

33 Main Street South  
853-1330

### TYLER TRANSPORT LTD.

"Service That Satisfies Since 1929"  
"Transporting Your Children Safely Since 1948"

853-1550

### NELLIS CONSTRUCTION LTD. ACTON



(519) 853-0960

### Scotiabank

36 Mill St. E.  
Acton

Partners with  
The Community  
George Hume, Manager  
853-2420

### ACTON DENTURE CLINIC

Roman J. Pilarski, D.D.

16 Mill St. E.  
Acton, Ont.

853-0079

### ACTON PHARMACY

Taking Care of You!

MON-WED, 9 TO 7  
THURS-FRI, 9 TO 9  
SAT, 9 TO 6

Rx Downtown Acton  
853-1620

### HALTON CREDIT UNION

Mon. - Wed. 9am to 5pm  
Thurs. - Fri. 9am to 8pm  
Saturday 9am to 1pm

Harold Postma, Manager  
273 Queen St. E. 853-0911

### BLOOMS AWAY

Huge selection of  
Fresh Flowers!

75 Mill St. E., Acton  
853-5534

## Learn to build a gingerbread house

Janet Worfolk and Catherine O'Donnell will be offering two classes on building gingerbread houses. Everything you need for your house is included in the classes, which take place tomorrow (Thursday) from 7 to 10 pm or this Saturday (Dec. 14) from 9:30 am to 12:30 pm.

The classes take place at Tuitman's Garden Centre, south of Acton on Hwy. 25 and are suitable for adults or children. The cost is \$30 per gingerbread house. For more information, call 853-5263.

Worfolk and O'Donnell will also be selling their cookies, cakes and other treats during class time.

### Have something to say?

Put it in a letter to the Editor and send it to *The Tanner* by Monday at noon.

**Be heard!**

## ACTON MOTORS

Servicing All Makes  
Selected Used Cars



853-1280

NORMAN PAULSEN