

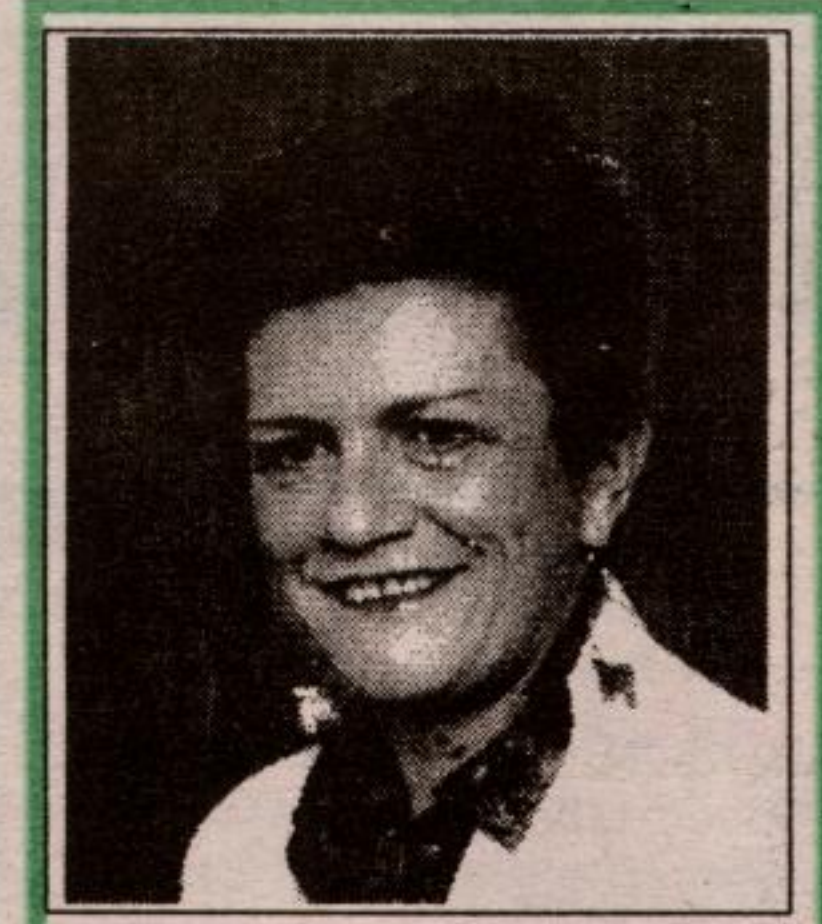


SULLIVAN Realty Ltd., Realtor

Covering Georgetown, Acton, Erin, Toronto and Surrounding Areas

(905) 873-SELL (7355)

SERVICE
IN ACTION



Jackie Holigrocki,
Sales Rep.

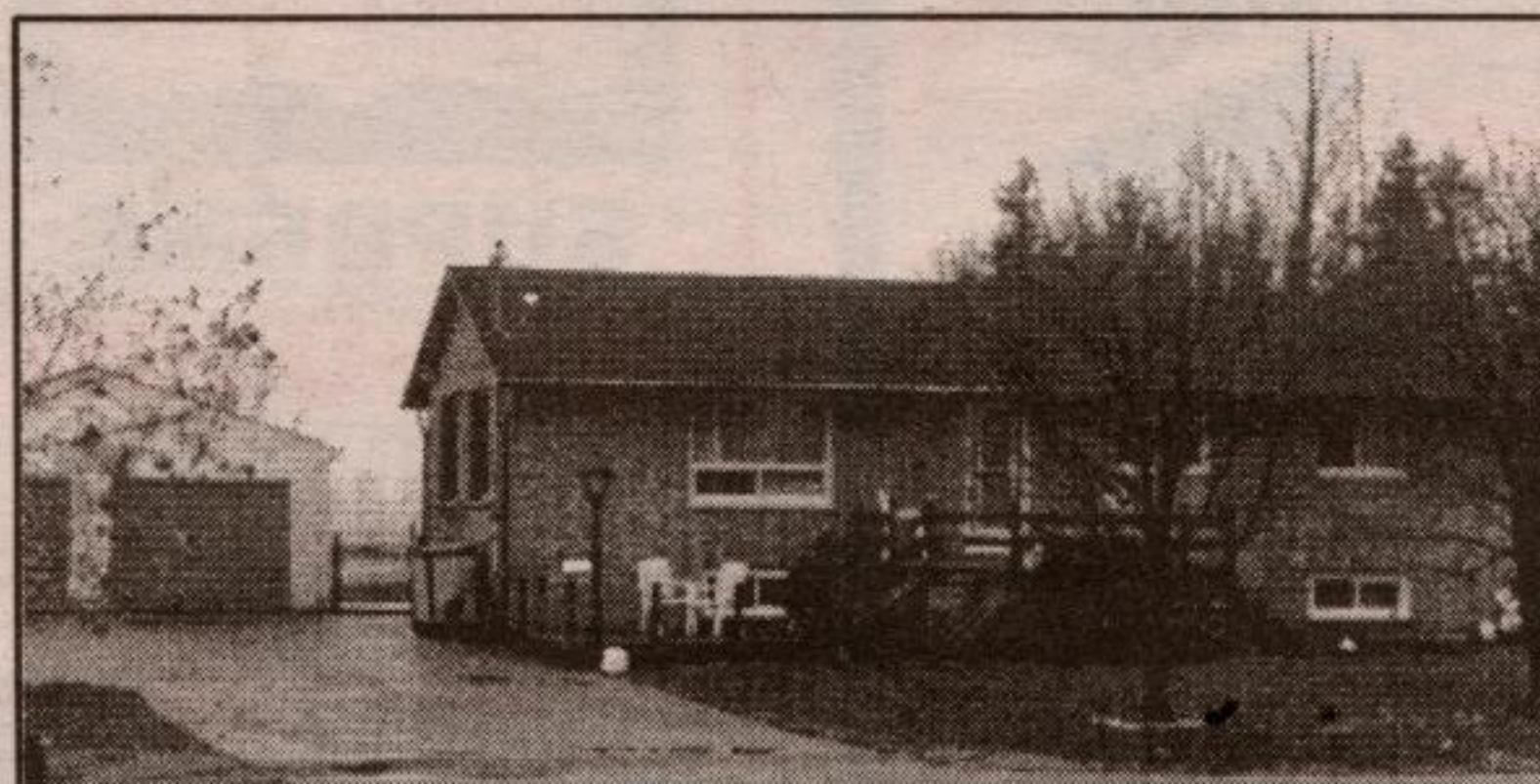


\$219,900.

Reproduction of Victorian home on huge lot, 109 x 132 feet, with double car garage, 3 washrooms, 5 turret windows, pocket doors, wal to ceiling library in den, fireplace and much, much more.

\$139,500.

Brick bungalow, separate double car garage on 1/2 acre, 3 bedrooms, eat-in kitchen, finished recreation room. Call me!



\$144,900.

Nicely finished 3 bedroom home with walk-out from living room to deck, also walk-out basement. Double garage and much more.

"On Our Block... it's Jackie ! ! !"

(905) 873-SELL (7355)

GUELPHVIEW SQUARE



❖ A GOOD PLACE ❖ TO SET UP YOUR BUSINESS

**Retail and Office Space Available
Various Sizes • Reasonable Rents**

- ❖ High visibility and traffic location, with excellent signage
- ❖ Lots of free parking
- ❖ Building and complex are well-maintained and cared for
- ❖ Building and property superintendent on duty daily
- ❖ In-suite janitorial services provided in offices
- ❖ No absentee landlord; owner has office in building
- ❖ Generous rental incentives

For details and to view GuelphView Square, please call Rud Whiting, Sales Representative, RE/MAX Blue Springs (Halton) Corp. at (905) 877-5211, 873-6570, Toronto line (905) 874-3051.



Maureen Plucinsky B.Sc.
Sales Representative

100% CLUB

Town & Country Specialist

Tor.: (905) 874-3048

Free evaluation <http://www.aztec-net.com/~maureen>

REALTY EXECUTIVES

REALTY EXECUTIVES SUPREME
873-0300

\$284,900
~.86
Acres
New



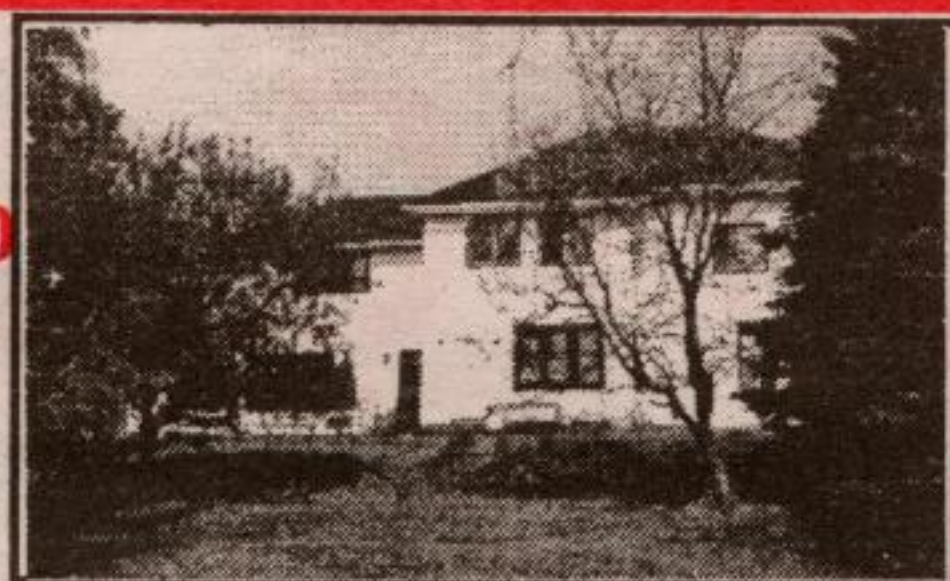
Halton Hills. 4 bdrm, 3 WR. Ceramic & hardwood. Gourmet kitchen. MF fam. rm. + FP. M Br + 6 pc ensuite, whirl tub & shower. Hi-eff. nat. gas furnace. 5min. to GO.

NEW
~7.45 Ac.
\$289,000



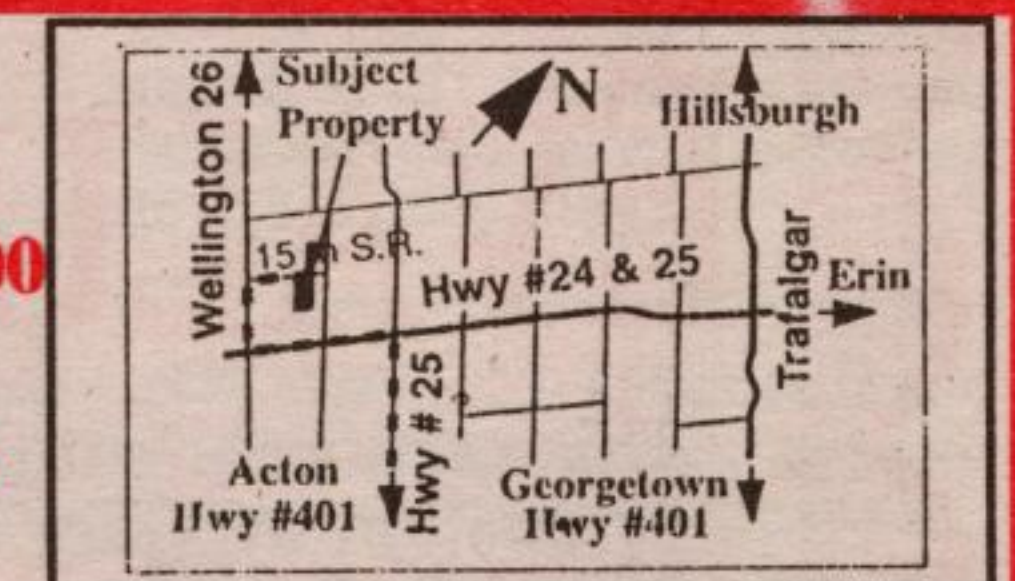
Erin. Majestic energy efficient Timber-Frame ~ 4,000 sq. ft. Treed, private lot. Drilled well. Soapstone F.P. Awaits your finishing touch. Hot water oil heating.

\$278,000
~23
Acres



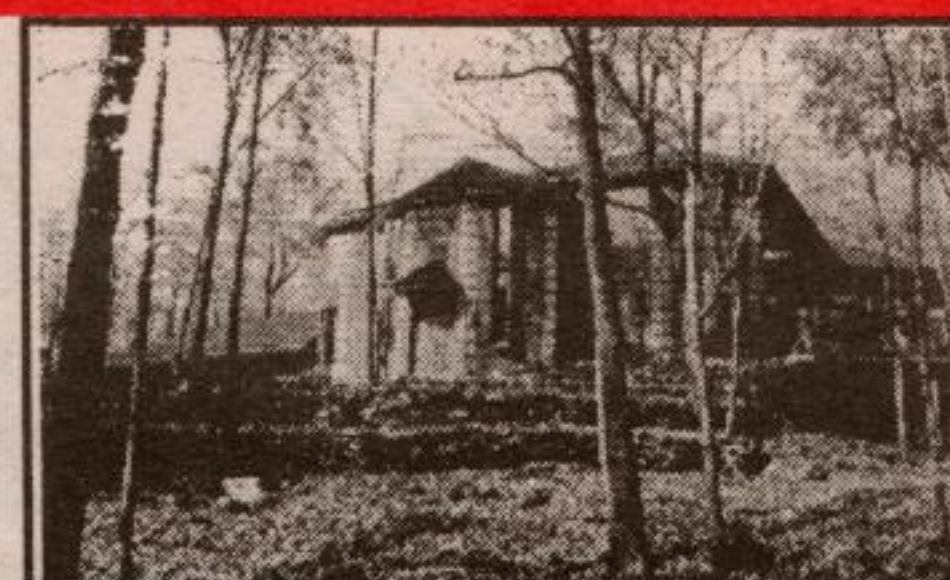
Erin. Two Family Hobby Farm. Main & upper floor In-Law. FAO/wood. Land suitable for horses. Quiet road. Set back across the Framosa river.

\$138,000
~33
Acres



Erin. Vacant land zoned agricultural. Possible pond site. Neither school levy nor lot levies are applicable. ~749 ft. frontage x ~2000 ft. Treed & sloping.

Terra Cotta
~17.34
Acres



Caledon. Exquisite private senior executive retreat on top of the Niagara Escarpment with easy access to Toronto. Exceptional attention to design and quality of materials.

\$359,000
~44
Acres



Milton. Hobby Farm. ~ 12 Min. to 401 Hwy. Barn & driveshed. Goat, sheep & beef farm. Treed & clear. 16 mile creek runs through property. Secluded. Low taxes.