

MARKETPLACE!

CE COUNTS"

Mississauga
74-3040

Oakville / Burlington
(905) 875-2143

JOHNSON ASSOCIATES
HALTON LTD., REALTOR
247 Guelph St.,
Georgetown, Ont. L7G 4A8

877-5165

FOR SALE

JOHNSON ASSOCIATES
HALTON LTD., REALTOR

Performance Counts



TWO FOR ONE SALE

Not only this gorgeous log home, but a 5 bedroom B.C. cedar ranch, all on 49 acres. Also a 22 x 40' insulated workshop.

Pat Akers* 96-383-91



EXCELLENT LOCATION

For golf & commuting. 4 bedroom executive home on half acre. Main floor family room, fireplace, large kitchen. \$259,900.

Call Rod* or Dinah* Presswood 96-362-30



IT'S JUST A GREAT HOUSE!

Estate lot setting, 4 bdrms, 3 FPs, spacious country kit., sep DR, sunken LR, main floor FR, walk-outs to expansive deck. Economical gas, R2000 standards. \$259,900.

Larry Barnstaple* 96-432-91



IMPRESSIVE LIVING!

2500SF of elegance in this Glen Williams home. Beautifully landscaped pri. lot w/lrg. deck off fam.rm to enjoy serenity. For in-home workers, a fabulous rm above gar. w/sep. entrance. Mn.flr. spacious fam.rm w/cathedral ceilings & brick FP-perfect for entertaining. \$269,900.

John Hill* or Glenda Hughes* 96-337-30



GOING, GOING ...

Large country homes minutes from paved roads just outside Guelph/Rockwood, 4 bedrooms, almost 2 acres, large garage/workshop, above grade in-law (illegal).

Call Elizabeth Doell* for more details. 96-444-99



COUNTRY CHARM & ATMOSPHERE

Minutes to Acton, Georgetown & Erin. Pretty home, skylights, new kitchen, upgraded bathroom, pond & bush. Some new windows. \$219,900.

Kathy Ellis* 96-336-31



PRETTY IN THE PARK

... is this three bedroom brick home with sunroom, fireplace, hardwood, detached garage.

Call Rod* or Dinah* Presswood for details. 96-443-30



STONE / BOARD & BATTEN

Large master w/suite bath & decorated from top to bottom w/elegance & charm. Heavily treed & private 1 acre lot on outskirts of village. Must be seen at \$219,000.

Wilf Moore* 96-438-91



50 ACRE FARM IN BALLINAFAD

Pretty farm, ideal for horse/cattle operation. Victorian, 4 bdrm home with central hall plan & lots of potential, roof & furnace only 2 yrs./old, Great bank barn cleared out and ready for stalls. Priced for a quick sale at \$309,000.

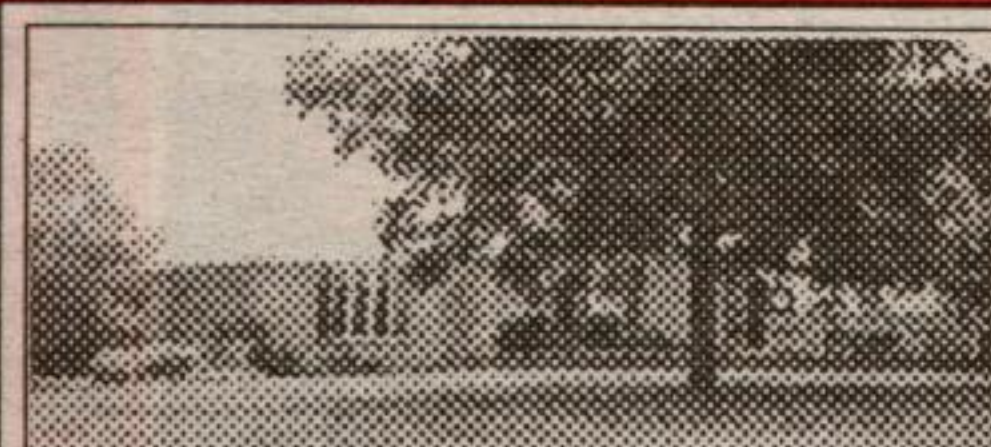
Kathy Ellis* 96-184-FA



EVERYONE'S WISH

\$287,500. 5 Beautiful acres with bush & expansive landscaped lawns, stream, 3 car garage. Approx. 2350 sq.ft. bungalow, sunken living room with woodstove & walkouts - 6 bedrooms, rec room, spacious country kitchen.

Larry Barnstaple* 96-395-91



LARGE SHOP, GAZEBO & HOT TUB

Upgraded kit. w/ centre island, whirlpool in mn. bath, 2 sep. basements, satellite dish, garden tractor, appliances, approx. 20 mins. to 401 at Hwy 25. Great neighbourhood.

Larry Barnstaple* 96-366-91



THIS IS NOT A DRIVE-BY!

Pretty, private lot (4.9 acres) with lovely bungalow. Large principal rooms, oak plank floors, oak panelled wall & zero clearance slate fireplace, upgraded oak country kitchen—the list is endless. Location ideal & the price amazing: \$243,000.

Kathy Ellis* 96-421-90



\$359,000

RUSTIC AND BEAUTIFUL

18 private acres with long views, pond, paddocks, bush with trail and rolling meadow. Exceptional "one of a kind" stone and log home. Gleaming wide plank floors, bright spacious rooms, cathedral ceilings, central stone fireplace on two floors.

Larry* or Martha* 96-375-91



CHARM - CHARACTER - VALUE

98 acre farm with stone farm house, spacious country kitchen, oak floors, walk up to attic with windows and skylight, driveway, shop and fantastic barn, land partly reforested.

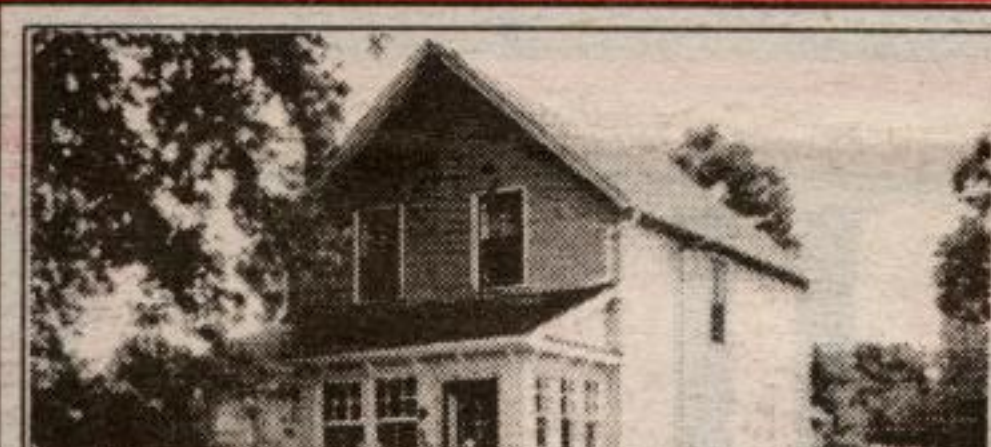
Larry Barnstaple* 96-388-91



MOORE PARK - GARDENS

Beautifully landscaped 3 bdrm sidesplit minutes from shopping, schools, hospital & GO Train. Don't miss this opportunity to live in desirable Moore Park.

Stewart Barclay* 96-404-30



A LOT FOR \$118,000

3 bedroom - 1-1/2 storey home located in quiet village on an 82 x 124 ft. lot. New FAG furnace in '95. The eat-in kitchen has a walkout to deck.

Rick Curry* 96-430-99



IT'S GOT IT ALL!

Exceptional 10 acres, beautifully landscaped, quality barn 52 ft. x 32 ft., two ponds, overflowing well. Immaculate 4 or 5 bedroom bungalow. Don't wait, call.

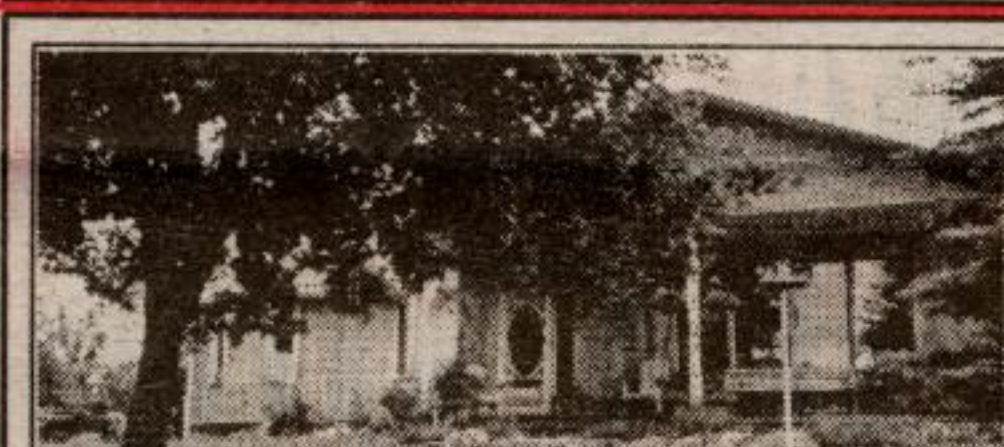
Larry Barnstaple* 96-355-91



"SLOW DOWN"

And start your own business in this Main Street location on a busy highway in a small village. Business on main level & enjoy the comfort of the renovated apt. upstairs.

Wilf Moore* 96-663-91



ULTIMATE COUNTRY!

12 acres, stream, bush, reforestation, open meadows, trails, long views, 3 bdrm brick beamed cathedral ceiling, 2 FPs, new kitchen, upgraded windows, hardwood, sunken FR, walkout basement. \$249,000.

Larry Barnstaple* 96-420-91



OPEN CONCEPT

with wonderful country view on 58 prime acres. Custom built with quality and style in mind. Approx. 4500 sq. ft. main level plus an additional 4500 sq. ft. on three other levels. 360 degree views from the vaulted ceilings, 3 car garage, stream and utility building. \$749,000.

Martha* or Larry* 96-273-91

ERIN 45 ACRES. Large scenic parcel with pond, hardwood bush & rolling open meadows. Near Terra Cotta & minutes to Georgetown. Numerous home building sites. Contact Tom Comery* 95-557-VL

100 ACRES. Hardwood bush — only \$26,900. Call Pam Reid* today. 95-493-VL

GREAT LOCATION TO BUILD YOUR DREAM HOME. On this 2 acre building lot. Paved road, excellent location for commuters. \$80,000. Call Rod* or Dinah* Presswood. 95-449-VL

SCENIC LOT. 4.5 acres. \$74,900, driveway is in, pond is in, stream was always there! This is Special—Power of Sale—Vendor Take Back to qualified purchaser. Call Martha Summers* 96-469-VL

97 ACRES OF ERIN. \$189,000. Farm land, bush, trails, stream. Mineral rights. Vendor will assist with financing. Call Larry Barnstaple* (905) 874-3040. 95-253-VL

ESCARPMENT WILDERNESS. 12 acre mixed woodland to build your castle. Handy location to 25 & 401. Asking \$129,900. Call Bill Ellis.** 96-435-VL

ANT
ID



Lynn Drewry*
Res. 873-8393



Kathy Ellis*
Res. 877-2725



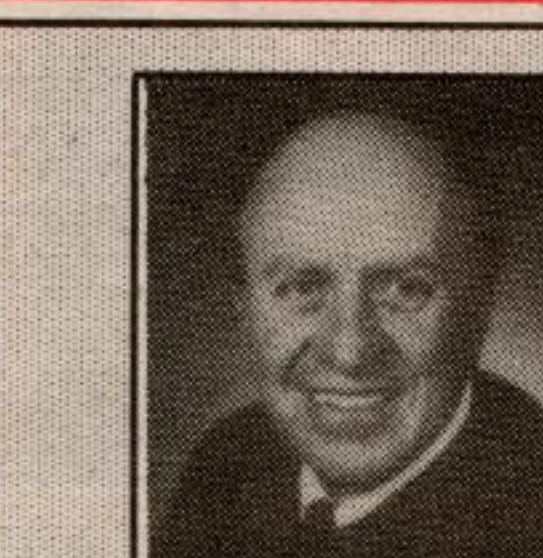
Renee Good*
Res. 877-1800



Jackie Greenwood*
Res. 877-8184



Brenda Hamilton*
Res. 877-6664



John Hill*
Res. 877-8402



Glenda Hughes*
Res. 877-8402



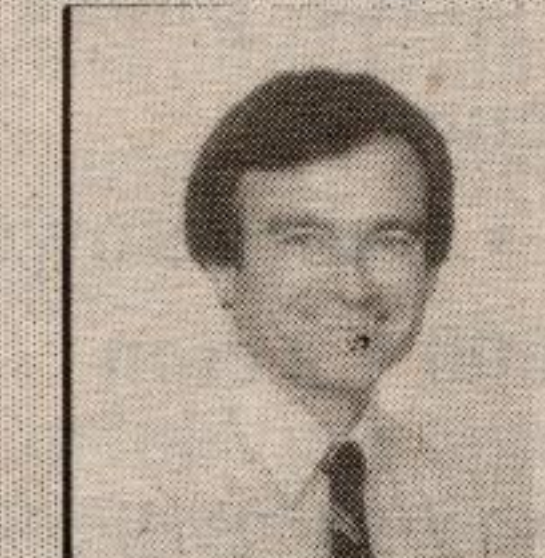
Iris Irwin*
Res. 877-7494



Rod Presswood*
Res. 877-7303



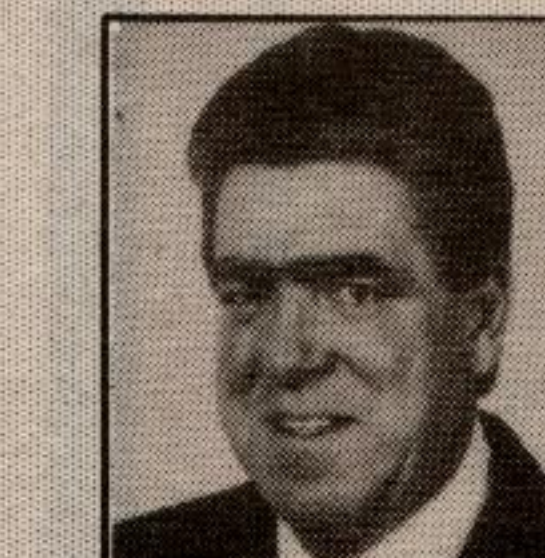
Pam Reid*
Res. 454-4646



Don Sargent**
Res. 838-2813



Martha Summers*
Res. 873-0655



Ralph Wesseling*
Res. 702-0704



Marilyn Worrall*
Res. 873-0650



Bill Ellis**
Res. 877-7528



Finn Poulstrup***
Broker