



RE/MAX

BLUE SPRINGS REALTY (HALTON) CORP.

Realtor Independently owned and operated

MEMBER OF BRAMPTON AND GUELPH DISTRICT REAL ESTATE

YOUR TOWN & COUNTRY SPECIALIST
YOU'RE #1 IN MY MARKETPLACE

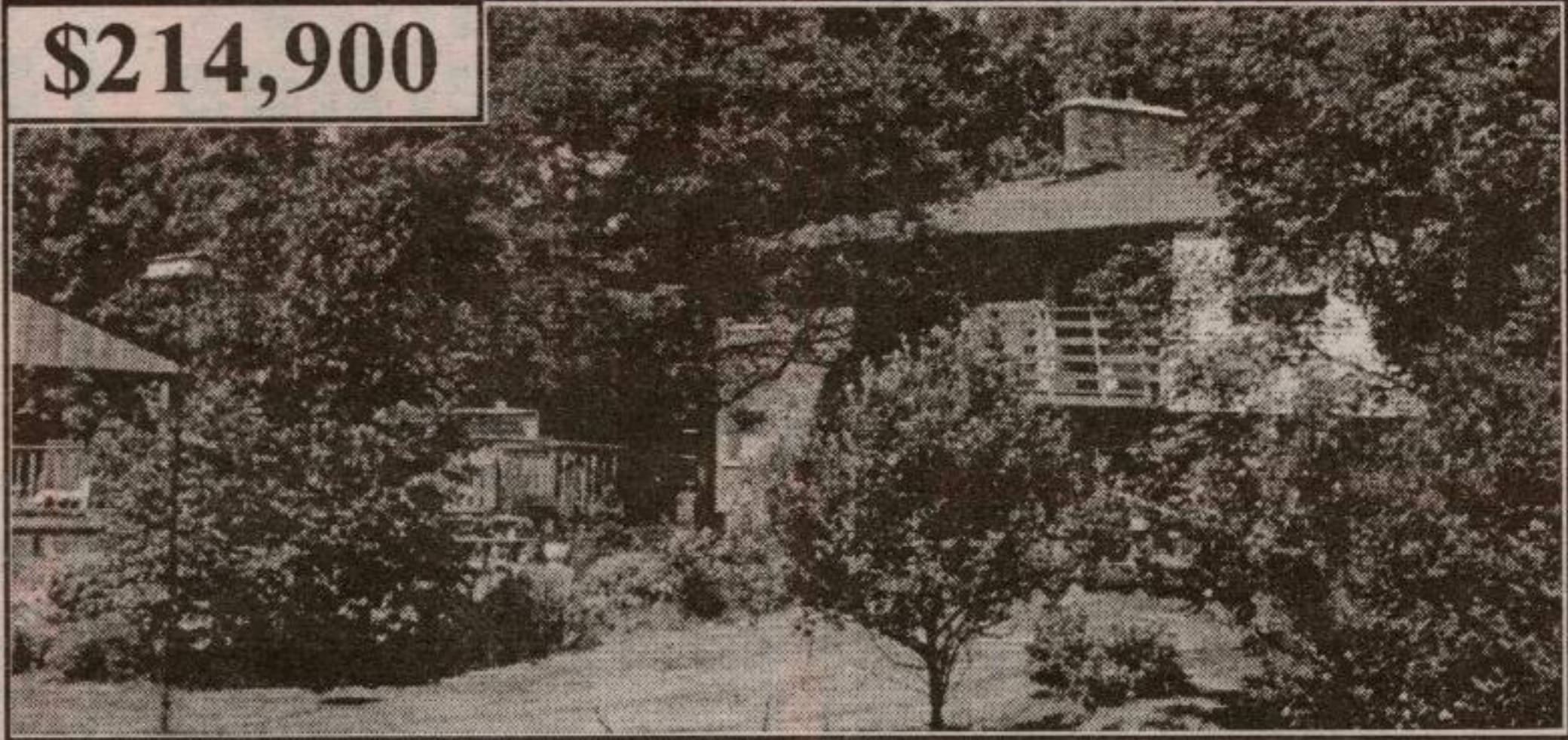
WAYNE SAUNDERS, SALES REP.

1-519-856-4348 (24 Hrs)

HAVE A MOVING EXPERIENCE!



\$214,900



1.6 Acre Village Setting

Secluded setting in Eden Mills for this lovely updated 1700 sq. ft. ranch. Full walkout at lower level provides possibility of in-law suite or home business. Circle drive, 2 ponds, recent roof \$ windows and furnace. Won't last long. Call Wayne.

RMRW96-055

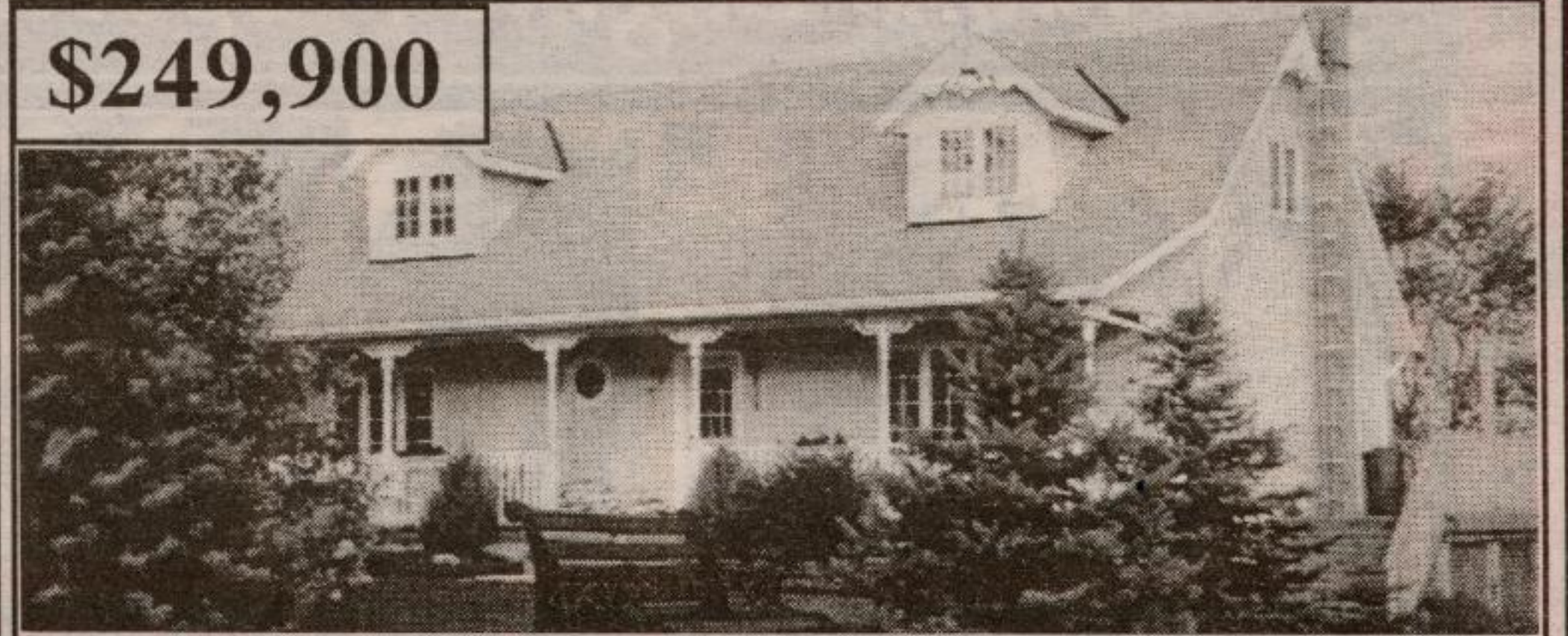
\$177,900



First Time Offered

This immaculate, spacious raised bungalow has all the toys, including a forested valley view of over 2 miles. Wildlife at your doorstep, but a village location. Central air, central vac, huge fenced back yard and in as-new condition. Drive by me at 106 Princess St., Rockwood. Then call Wayne*. RMRW96-070

\$249,900



Country At Its Best

Over 13 acres of rolling land with 2 horse paddocks and a view for miles. 4 year old, R2000 custom home of 2100 sq. ft. plus gorgeous finished basement, 6 miles north of Hwy 24 near Hillsburgh. Shows like new.

Call Wayne* for more details.

RMRW96-077

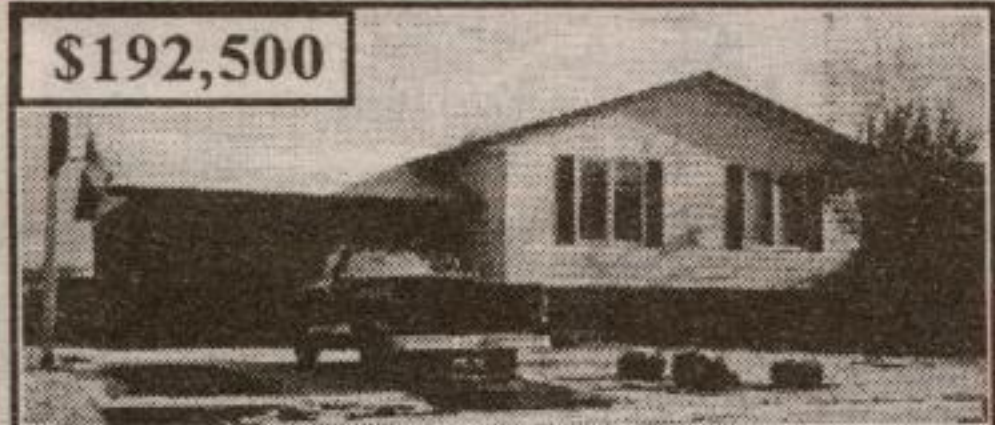
\$199,900



Lou's Boulevard

South end location on Lou's Blvd. for this spacious, 2100 sq. ft., 2 year old home. Features include gas furnace, gas fireplace, 3 bathrooms, 4 bedrooms, main floor family room, and much more. Call Wayne to view.

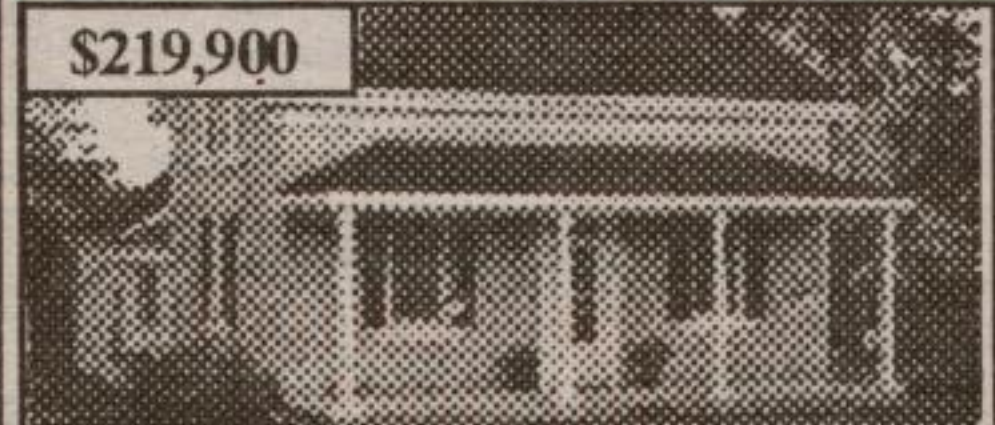
\$192,500



Custom Home & All The Toys!

This spacious brick bungalow even has an in-law suite in the lower level with walkout. Features include huge fenced backyard and multi-level deck, 2 fireplaces (one is gas), new gas furnace, new 2,000-ton central air, central vac, spacious country oak kitchen with greenhouse dinette. The list goes on and on. Call Wayne*.

\$219,900



Classic Stone Home

Located just North of Hwy 7 in the lazy hamlet of Everton on a 1+ acre treed property. Georgian in style, upgrades include windows, furnace, electrical, well and much much more. Spacious country kitchen dressed in stone & pine. The uniqueness of yesterday with the comforts of today. (Eramosa River behind property). Call Wayne*. RMRW

\$184,900



Hamlet of Everton

Spacious 1700 sq. ft. brick & vinyl bungalow on 2.2 acres in a village setting. Quiet dead end street across from Conservation owned land. Fenced tennis court and oversized 35 x 28 attached garage. Home has plenty of potential for main floor inlaw suite. Call Wayne*. RMRW96-008

\$73,900

1.7 heavenly acres. Land is high and dry with rock outcroppings and a drilled well. Secluded location, 5 km north of Hwy. 24.

10.1 Rolling Acres \$109,900

Located just south of Hwy. 7 at Rockwood, 10 minutes to 401. Numerous building suites with possibility of walkout basements. Part of land is farm and stream runs through property.

ASK FOR WAYNE 856-4348 FOR A COMPREHENSIVE WRITTEN EVALUATION OF YOUR PROPERTY AT NO OBLIGATION TO YOU!

Not intended to solicit properties already listed for sale.



Maureen Plucinsky B.Sc.

Sales Representative

100% CLUB

Town & Country Specialist

Tor.: (905) 874-3048

Free evaluation <http://www.aztec-net.com/~maureen>



REALTY EXECUTIVES SUPREME

873-0300

\$284,900
~.86
Acres
New



Halton Hills. 4 bdrm, 3 WR. Ceramic & hardwood. Gourmet kitchen, MF fam. rm. + FP, M Br + 6 pc ensuite, whirl tub & shower. Hi-eff. nat. gas furnace. 5min. to GO.

NEW
~7.45 Ac.
\$289,000



Erin. Majestic energy efficient Timber-Frame ~ 4,000 sq. ft. Treed, private lot. Drilled well. Soapstone F.P. Awaits your finishing touch. Hot water oil heating.

\$278,000
~23
Acres



Erin. Two Family Hobby Farm. Main & upper floor In-Law. FAO/wood. Land suitable for horses. Quiet road. Set back across the Eramosa river.

\$138,000
~33
Acres



Erin. Vacant land zoned agricultural. Possible pond site. Neither school levy nor lot levies are applicable. ~749 ft. frontage x ~2000 ft. Treed & sloping.

Sold
97 Acres



Halton Hills. ~ 5 minutes to Hwy 401. 4 bdrm, 3 WR, solid home. Good bank barn. Gently rolling land with seasonal stream. ~10 ac. treed. V.T.B. possible.

\$359,000
~ 44
Acres



Milton. Hobby Farm. ~ 12 Min. to 401 Hwy. Barn & driveway. Goat, sheep & beef farm. Treed & clear. 16 mile creek runs through property. Secluded. Low taxes.

GUELPHVIEW SQUARE



A GOOD PLACE TO SET UP YOUR BUSINESS

**Retail and Office Space Available
Various Sizes • Reasonable Rents**

- ❖ High visibility and traffic location, with excellent signage
- ❖ Lots of free parking
- ❖ Building and complex are well-maintained and cared for
- ❖ Building and property superintendent on duty daily
- ❖ In-suite janitorial services provided in offices
- ❖ No absentee landlord; owner has office in building
- ❖ Generous rental incentives

For details and to view GuelphView Square, please call Rud Whiting, Sales Representative, RE/MAX Suburban (91) Inc., at (905) 877-5211, 873-6570, Toronto line (905) 874-3051.