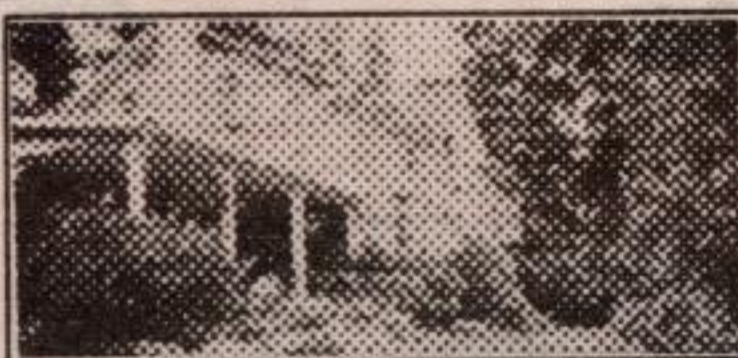


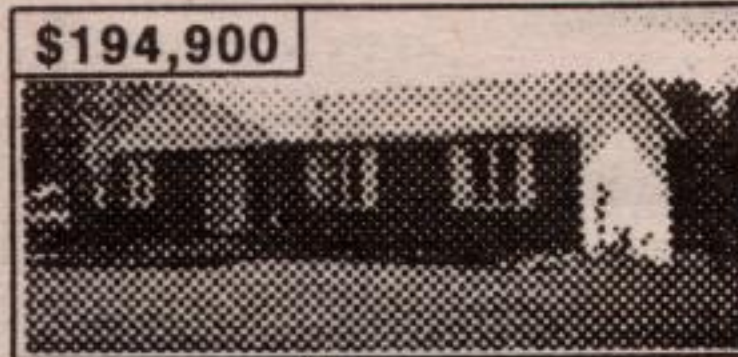


**SUPREME
873-0300**

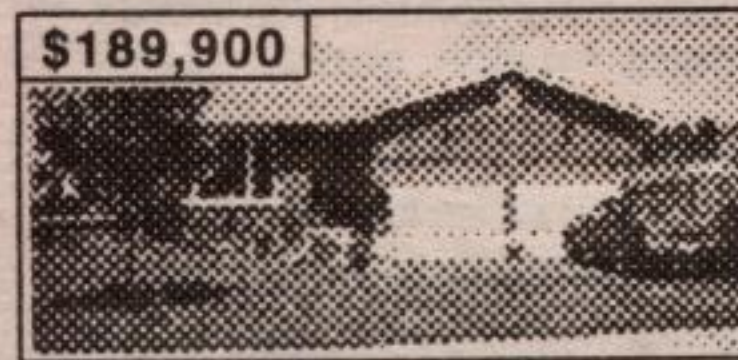
232A GUELPH ST., UNIT 10
GEORGETOWN, ONT.
TOR. # 874-3048



PICTURE BOOK CENTURY STONE: Farmhouse retreat on 100 full acres with good barn in excellent condition, ceilings are high, perfect for horses. Beautiful setting with long treed lane, and wonderful flower beds. Home is stunning with wide window wells, original pine floors, pine kitchen cupboards & more! Call Marg Suitor.* 0122



HIGHLANDS OF HILLSBURGH: Nearly new bungalow, 3 bedrooms, 2 baths, spacious eat in kitchen, large fenced lot, walkout basement, quality built to R2000 standards, neutral decor and listed for \$194,900. Call Marg Suitor.* 0123



ROCKWOOD BEAUTY: Spacious 4 bedroom backsplitted in quiet area of town, eat in kitchen with walkout, family room with fireplace, gas heat, solid oak kitchen, main bath with jacuzzi tub, listed for \$189,900. Call Marg Suitor.* 0132

Check dates, codes on grocery items

WEE-WEE-WEE TIPS

By MARGARET VIRANY
When buying dairy products you don't intend to consume right away, look at the back of the store cabinet for longer 'best before' dates.

Make a home system for labelling and rotating your food supplies. For leftovers, mark the date on a paper tab. Shut it into the lid of the storage container so it hangs out and you can read it. For freezer foods, use red stickers for the first half of the year and green for the second so you will know which to eat first.

If you find best before dates are blurred, coded, hidden, missing or expired, don't hesitate to complain politely to the retailer and producer. Frozen packages are usually not required to carry dates. Consumers argue they should, since they don't keep forever.

When shopping for oranges, notice they may be described by numbers. 138, 105 or 88 means that is the number of oranges that fit in a crate. A bigger number means a smaller size of fruit.

Recently I complained to my store manager that his orange displays were confusing. Those at \$3.99 a dozen and those at \$2.99 a dozen looked the same. There was no code on the sticker to let the cashier know what to charge. When I pointed the problems out, the manager agreed with me and changed them all to \$2.99 a dozen.

Orange juice is sweet and nutritious. But if children drink it regularly at bedtime and don't brush their teeth it could cause cavities. (Wee-Wee-Wee Tips are written by Margaret Virany, a volunteer with the Consumers' Association of Canada.)



**Maureen
Plucinsky B.Sc.**
Sales Representative
100% CLUB

Town & Country Specialist

Free evaluation <http://www.aztec-net.com/~maureen>



**REALEXECUTIVES SUPREME
873-0300**



**\$359,000
44 Acres**

Milton. Hobby Farm. ~ 12 Min. to 401 Hwy. Barn & driveshed. Goat, sheep & beef farm. Treed & clear. 16 mile creek runs through property. Secluded. Low taxes.



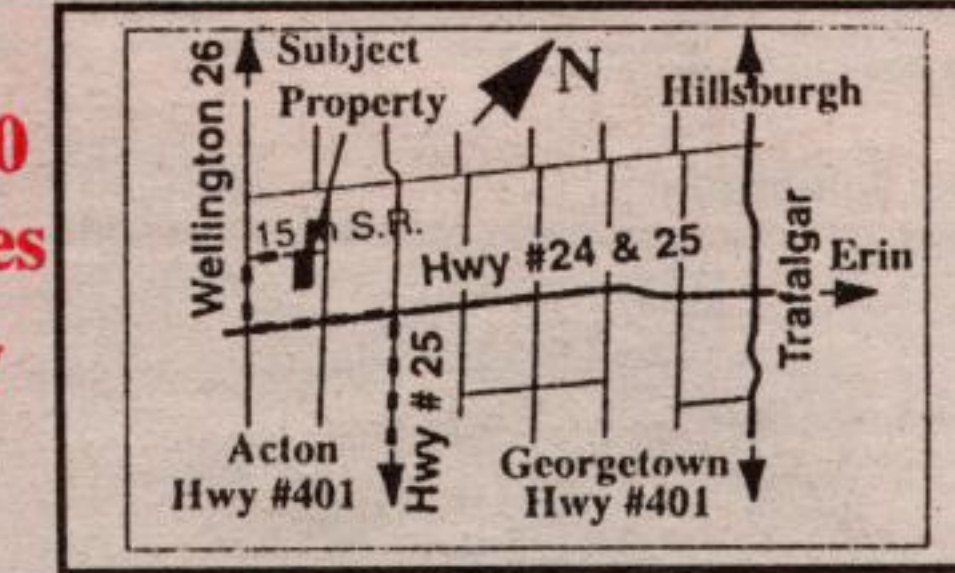
**\$219,900
~1 Acre
New**

Halton Hills. Well kept & nicely decorated 4bdm, 3 WR bungalow on a hilly acre. Fin. bsmt. with separate entrance. FAO with heat pump. A family home.



**\$278,000
~23 Acres**

Erin. Two Family Hobby Farm. Main & upper floor In-Law. FAO/wood. Land suitable for horses. Quiet road. Set back across the Eramosa river.



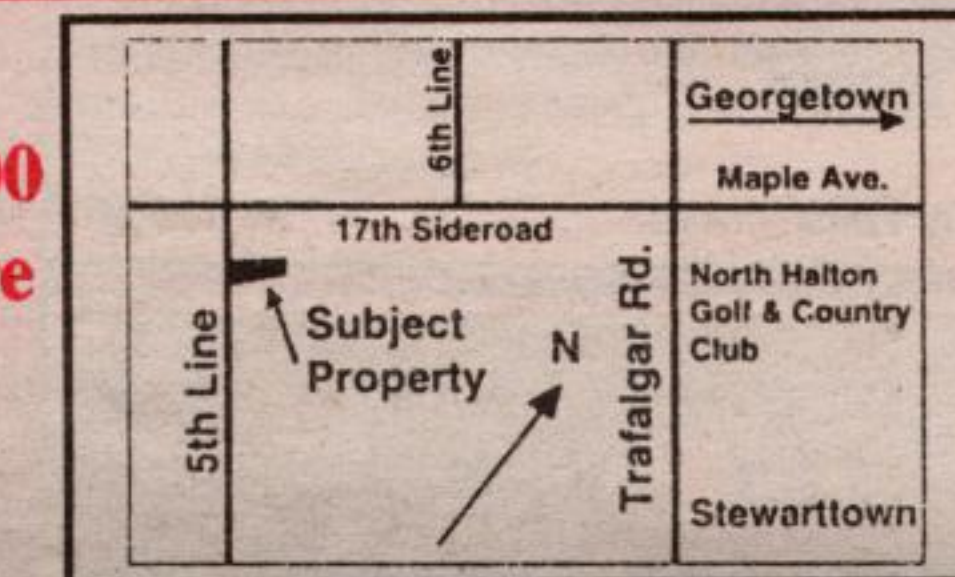
**\$138,000
~33 Acres
New**

Erin. Vavant land zoned agricultural. Possible pond site. Neither school levy nor lot levies are applicable. ~749 ft. frontage x ~2000 ft. Treed & sloping.



**Power
of Sale
97 Acres**

Halton Hills. ~ 5 minutes to Hwy 401. 4 bdrm, 3 WR, solid home. Good bank barn. Gently rolling land with seasonal stream. ~10 ac. treed. V.T.B. possible.



**\$124,900
.67 Acre
LOT**

Georgetown. Building lot with stream. Lot levies paid. Excellent drilled well. Fenced. Mature trees on lot & backs onto trees. VTB to qualified Purchaser.



RE/MAX

BLUE SPRINGS REALTY (HALTON) CORP.

Realtor Independently owned and operated

MEMBER OF BRAMPTON AND GUELPH DISTRICT REAL ESTATE

**YOUR TOWN & COUNTRY SPECIALIST
YOU'RE #1 IN MY MARKETPLACE
WAYNE SAUNDERS, SALES REP.**

1-519-856-4348 (24 Hrs)

HAVE A MOVING EXPERIENCE!

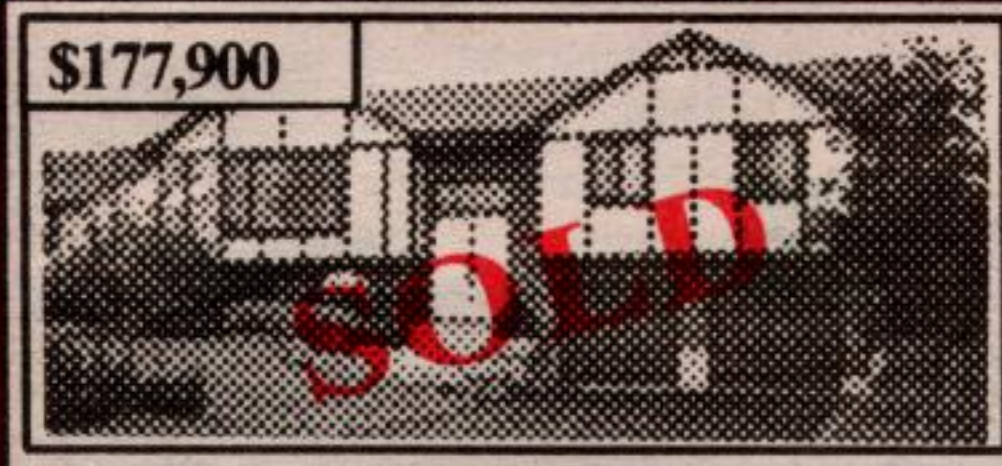


\$214,900

1.6 Acre Village Setting

Secluded setting in Eden Mills for this lovely updated 1700 sq. ft. ranch. Full walkout at lower level provides possibility of in-law suite or home business. Circle drive, 2 ponds, recent roof \$ windows and furnace. Won't last long. Call Wayne.

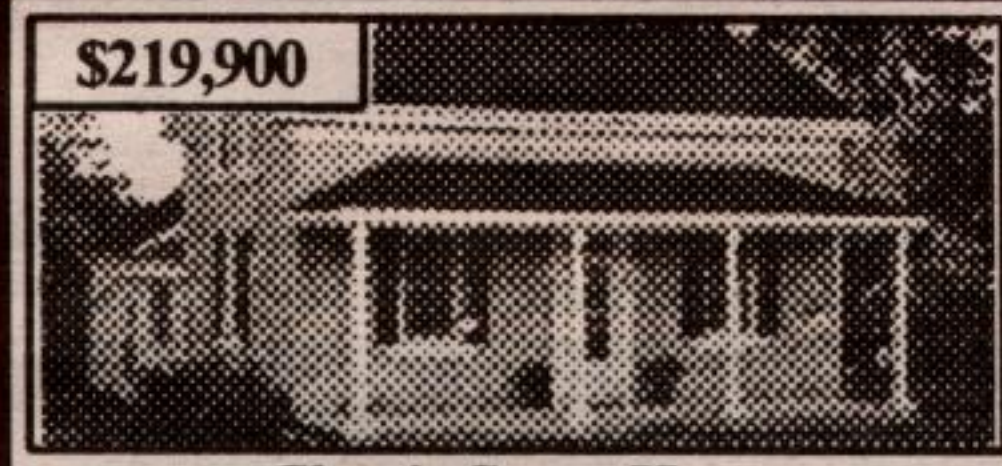
RMRW96-055



\$177,900

First Time Offered

This immaculate, spacious raised bungalow has all the toys, including a forested valley view of over 2 miles. Wildlife at your doorstep, but a village location. Central air, central vac, huge fenced back yard and in as-new condition. Drive by me at 106 Princess St., Rockwood. Then call Wayne*. RMRW96-070



\$219,900

Classic Stone Home

Located just North of Hwy 7 in the lazy hamlet of Everton on a 1+ acre treed property. Georgian in style, upgrades include windows, furnace, electrical, well and much more. Spacious country kitchen dressed in stone & pine. The uniqueness of yesterday with the comforts of today. (Eramosa River behind property) Call Wayne*. RMRW



\$199,900

Lou's Boulevard

South end location on Lou's Blvd. for this spacious, 2100 sq. ft., 2 year old home. Features include gas furnace, gas fireplace, 3 bathrooms, 4 bedrooms, main floor family room, and much more. Call Wayne to view.



\$176,900

Rockwood Cape Cod

Custom upgraded home with air, new gas furnace, central vac, spacious master with ensuite bath, main floor family room with fireplace & more. Across from Conservation Park.

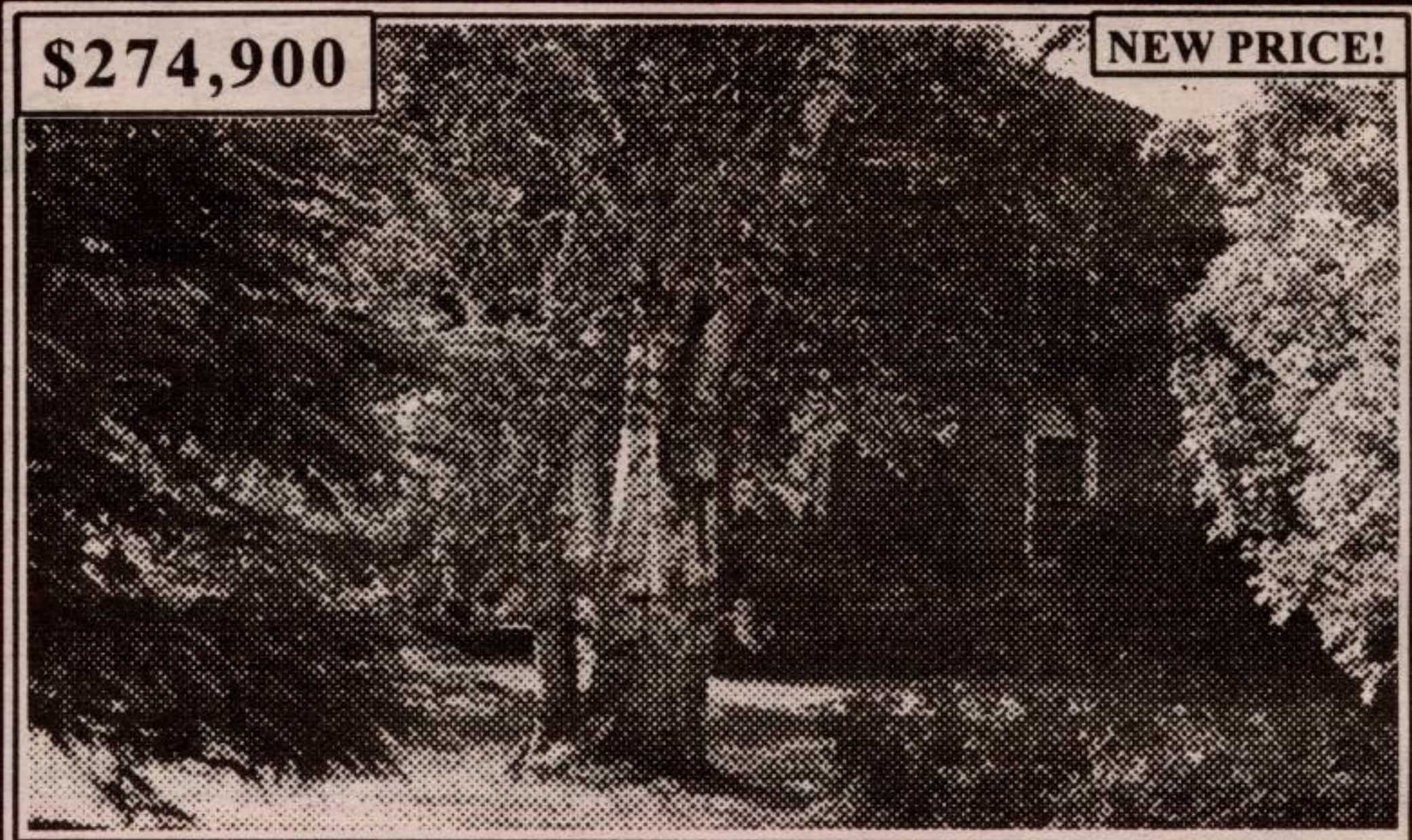
RMRW96-030



\$695,000

Country Estate

Just west of Acton on secluded country road, this 97 acre property offers spring fed pond, 16 acres hardwood bush, 16 acres mixed (3 miles of trails). Barn in good condition. The century farm home has 2 additional homes (8 yrs old) built onto it with flexibility of use. A great retreat for conference centre or three families. Call Wayne* for more details. RMRW95-022



\$274,900

NEW PRICE!

Century Country Home + 82 Acres

Located on Hwy. 24 just west of Ospringe, this lovely country farm offers 65 workable acres, trout pond, 6 new fenced paddocks, 50 x 110 steel building, bank barn plus updated 2000 sq. ft. brick home. Call Wayne*. RMRW96-004



\$324,900 NEW PRICE!

97.4 Acres, Century Home Plus Log Cabin

Located 3 miles north of Hwy. 24 on a paved road, this century farm has much to offer - 65 acres workable, mixed bush, restored 700 ft. log cabin, 1100 sq. ft. detached workshop, bank barn, mature setting and an outstanding principal residence.



\$589,900

Once in a While

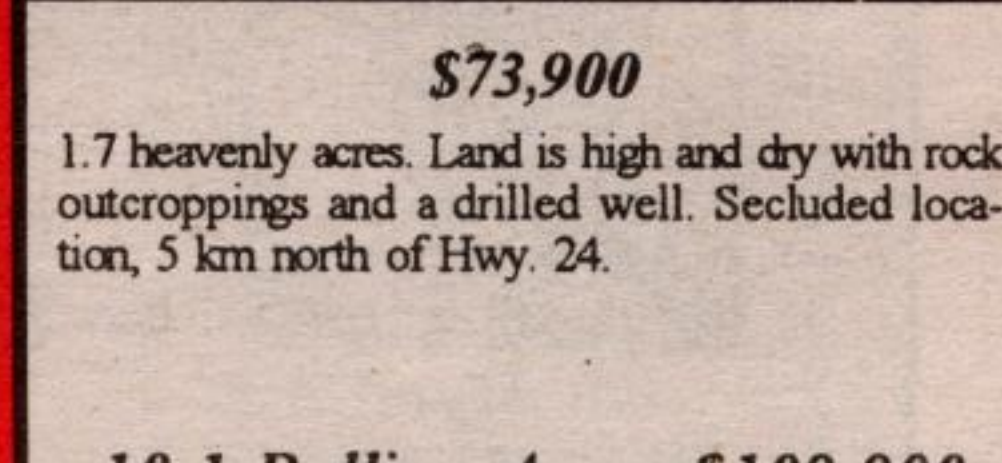
A special property comes along! This is it. 71 rolling acres, approx. 50 acres rented. Excellent barn for horses.



\$184,900

Hamlet of Everton

Spacious 1700 sq. ft. brick & vinyl bungalow on 2.2 acres in a village setting. Quiet dead end street across from Conservation owned land. Fenced tennis court and oversized 35 x 28 attached garage. Home has plenty of potential for main floor inlaw suite. Call Wayne*. RMRW96-008



\$73,900

10.1 Rolling Acres \$109,900

Located just south of Hwy. 7 at Rockwood. 10 minutes to 401. Numerous building suites with possibility of walkout basements. Part of land is farm and stream runs through property.

ASK FOR WAYNE 856-4348 FOR A COMPREHENSIVE WRITTEN EVALUATION OF YOUR PROPERTY AT NO OBLIGATION TO YOU!

Not intended to solicit properties already listed for sale.