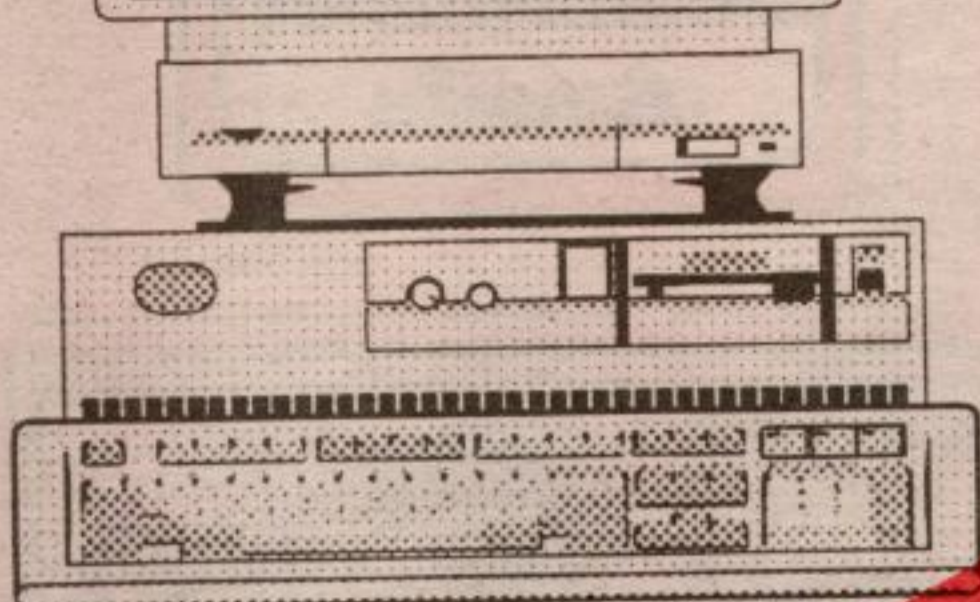


MARKET YOUR HOME TO THE WORLD AT

<http://www.royallepage.ca>

- LISTING BY PROVINCE
- SPECIAL SERVICES
- SALES ASSOCIATE PROFILES



Over 20,000 Royal LePage listings for you to view today.

ROYAL LePAGE

(905) 877-0173
TORONTO (905) 874-3068

ROYAL LEPAGE
Real Estate Services
Ltd. Broker

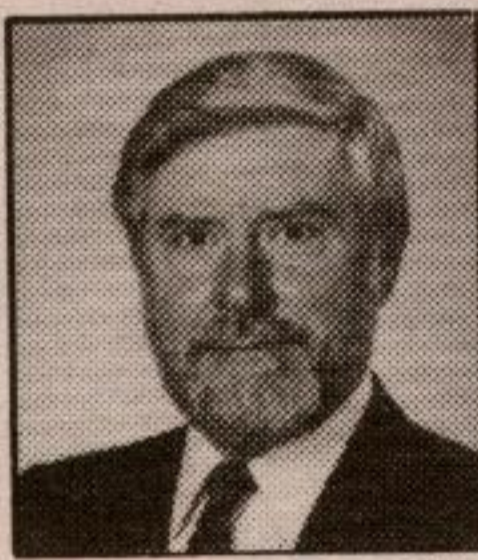
170 Guelph St.
Georgetown, L7G 4A7



Gary Brand
FRI**



Marilyn Champ*



Richard Judd*



Nancy Kelman*



Tony Maan***



Mary Maan*



Betty McKend*



Donna Robbins*



Julia Stuart*

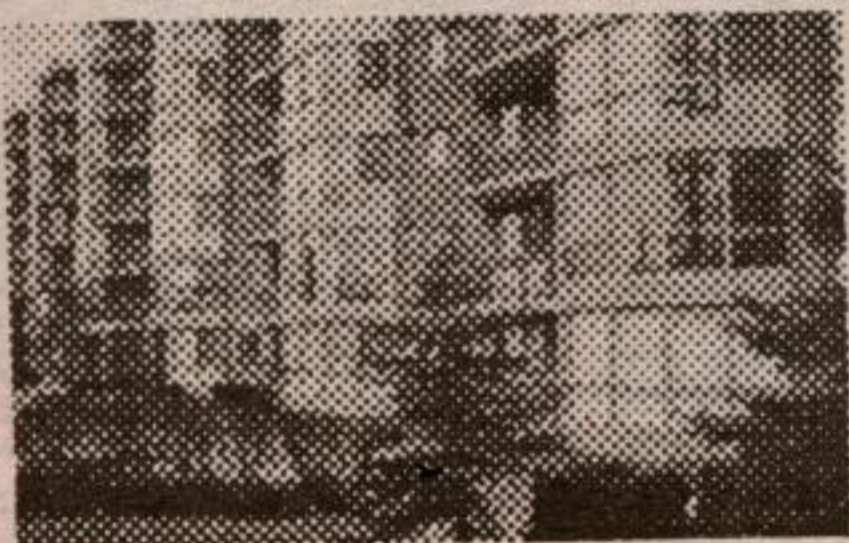


Susan Whitteker*

Sales Assistant *** - Associate Broker ** - Sales Representative *

PETS WELCOME!

\$114,900

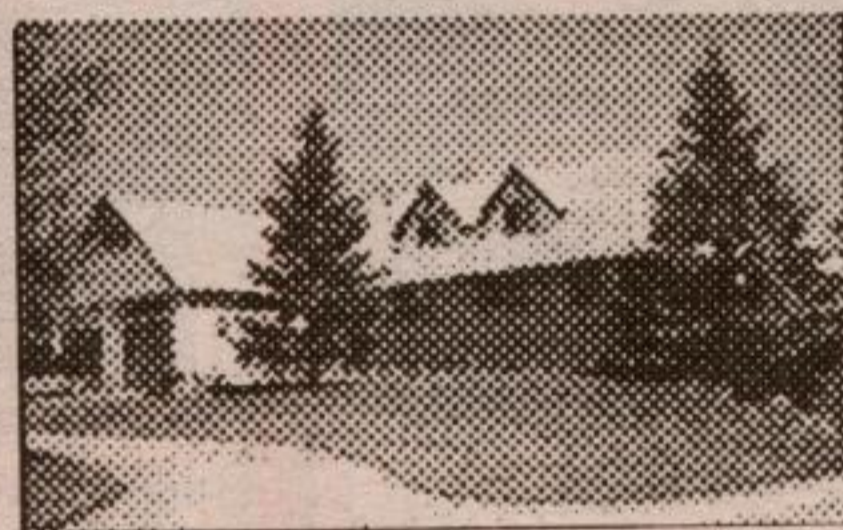


1 bdrm + den condo. Huge windows overlooking Silver Creek. Open concept. Watch fall colours from your own home.

Mary Maan*
Sales Rep.
31-147

600' TREE-LINED DRIVEWAY

\$289,000



- Complete privacy
- Over 5 acres
- Located in Erin Township
- Large 2 family home
- 200 amp service
- Convenient to Caledon Ski Club - numerous golf courses and Belfountain

Donna Robbins*, Sales Rep.
5-75A

NIAGARA ESCARPMENT



Only minutes from Georgetown. No compromise in material or workmanship. Pool. Call for full colour feature sheet.

Gary Brand**
Assoc. Broker
Res. 877-8826 8-1

THE WINNER'S CIRCLE

\$339,000



Gracious and spacious 4 bedroom bungalow in tranquil Eden Mills. Huge deck for summer entertaining. To see is to love!

Betty McKend*
Sales Rep.
32-70

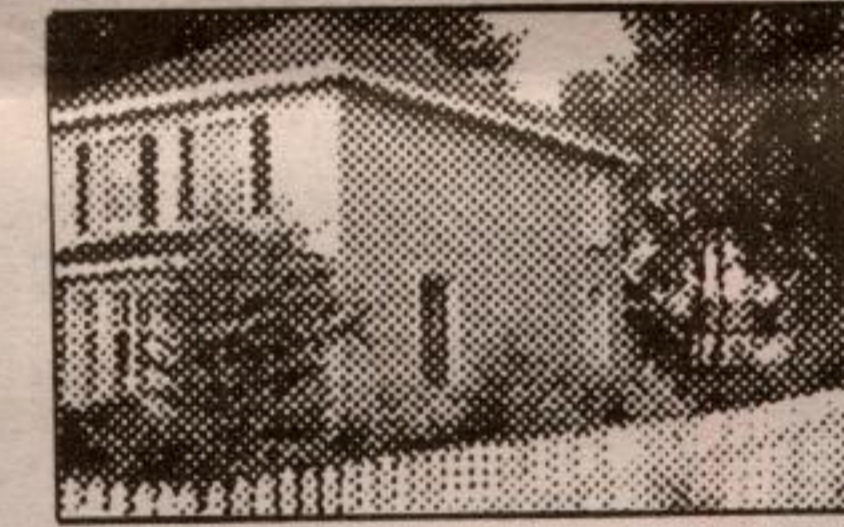
TOUCHED BY THE MASTER PAINTER



1.86 acres ablaze with fall colour. Rolling hills. Dutch clean home. A treasure any time of the year. \$219,900. Appointments exclusively through Nancy Kelman* Sales Rep. 3-8

WHITE PICKET FENCES

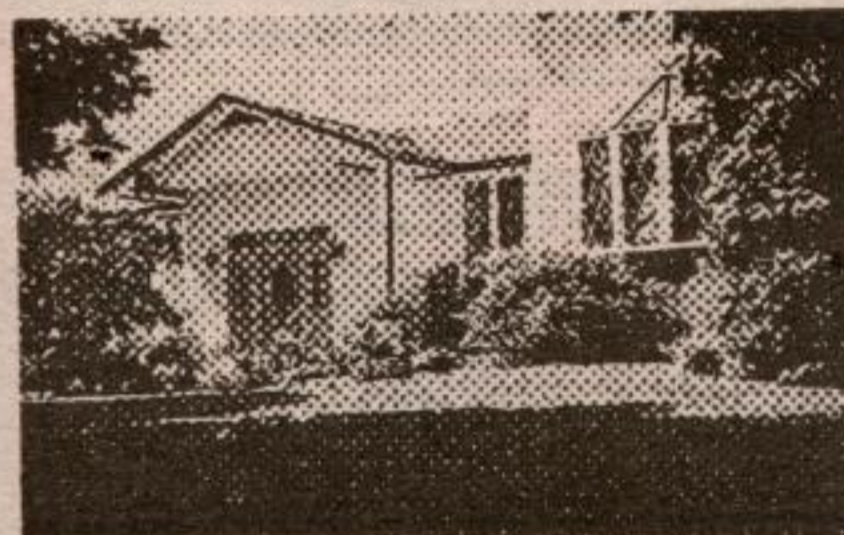
\$154,900



High ceilings, wide baseboards, open concept, 3 bedroom older home. Large garden.

Mary Maan*
Sales Rep.
31-155

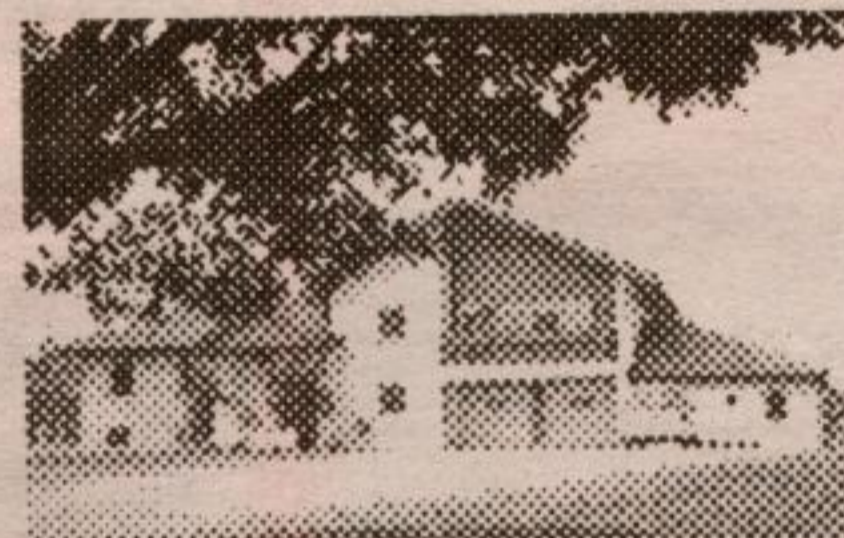
CHARACTER HOME - UPGRADES GALORE



Family size kitchen overlooks private large yard. LR with floor to ceiling FP. 4 good sized bdrms. 2 4-piece & 1 2-piece bathrooms. Extra sitting rm & finished rec rm. You must see this home at \$194,900. Susan Whitteker* Sales Rep. 31-152

EUROPEAN FLAIR!

\$375,000



Superb 3 bedroom chalet-style home in Eramosa. Tilt & swing windows, rollag blinds, ceramic stove, plus! plus!

Richard Judd*
Sales Rep.
5-99

GLEN WILLIAMS CHARMER



Renovated century home features strip wood floors, 3 skylights, modern kitchen and bathroom, professionally landscaped gardens and more. Only \$199,000.

Marilyn Champ*
Sales Rep.
4-90

CREATE YOUR DREAM

\$459,000



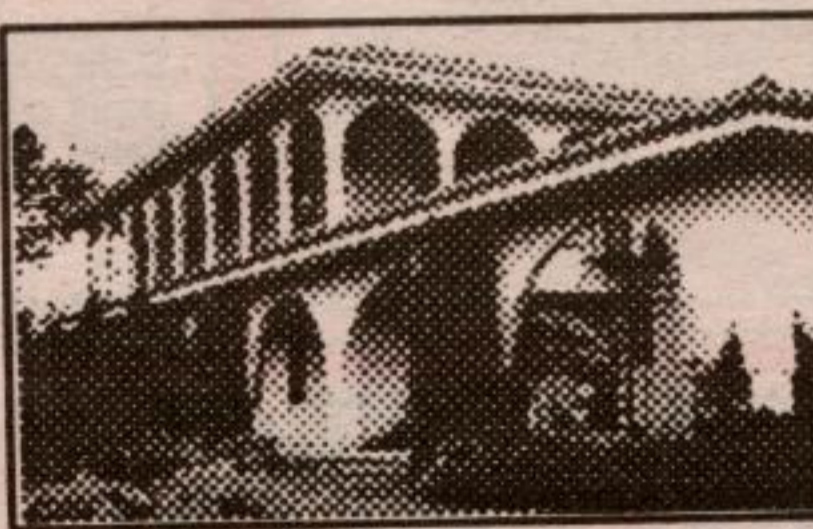
92 acres of scenic land on the edge of Georgetown waiting for your dream estate!! Vendor says 'bring and offer!'

Marilyn Champ*
Sales Rep.
4-86

DISTINCTIVE HOME!

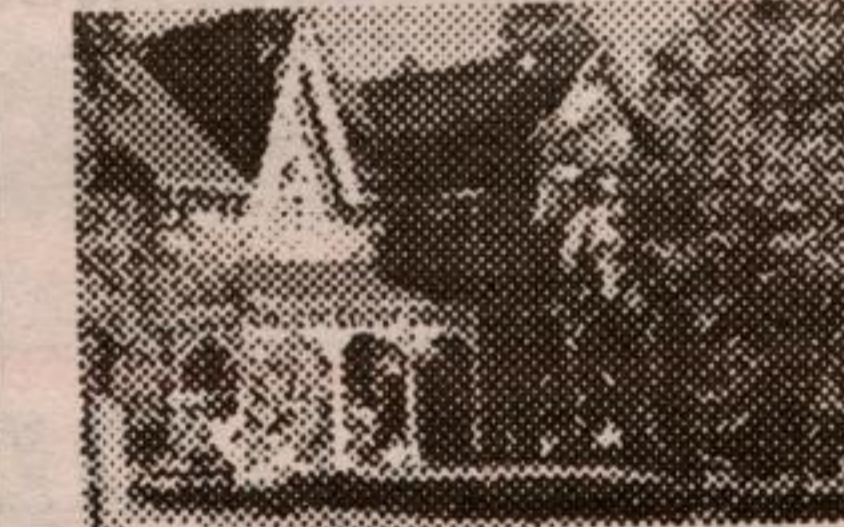
A quality custom built home on 15.9 acres in scenic Terra Cotta. Private road. Detached 1 car garage. Swimming pool. Walkout basement. 3 fireplaces.

Julia Stuart*
Sales Rep.
2-6



SHILOH RANCH

\$1,600,000



Fabulous 433 acre package on the Speed River in Eramosa. Century home and full equestrian facility including indoor arena.

Richard Judd*
Sales Rep.
5-100

NEW PRICE!

LOTS OF ROOM!
\$209,000



Large home with recent upgrades - ensuite, fireplace, walkouts, eat-in kitchen, games room.

Donna Robbins*
Sales Rep. 13-25

READY TO GO!

\$119,000



Corner commercial lot in core area of Village. Would suit professional building.

Julia Stuart*
Sales Rep.
32-61

FISH, FROGS & FUNNY THINGS

2 acres in Halton Hills - creek - year round - building site. \$69,000.



Nancy Kelman*
Sales Rep.
873-4422

EAST - WEST VIEWS

\$97,900



Vacant building lot - 2 acres. Area of country homes and farms. Paved roads. North of Acton.

Call Betty McKend*
32-53

THE "PARK" DISTRICT

Backing onto the bush in Marywood Meadows. Large 4 bdrm with totally renovated kitchen, built-in appliances, greenhouse eating area. Overlooks private mature lot. Patios wrapping around the pool. Finished basement. \$274,000. Susan Whitteker* Sales Rep. 20-37



GEORGETOWN'S FINEST

\$237,900



3 bdrm home on Noble Court has 2 more on the lower level - pride of ownership throughout. Garden with both flowers & herbs and provides year-round enjoyment of the ravine. Gary Brand**, Assoc. Broker. Res. 877-8826 8-7