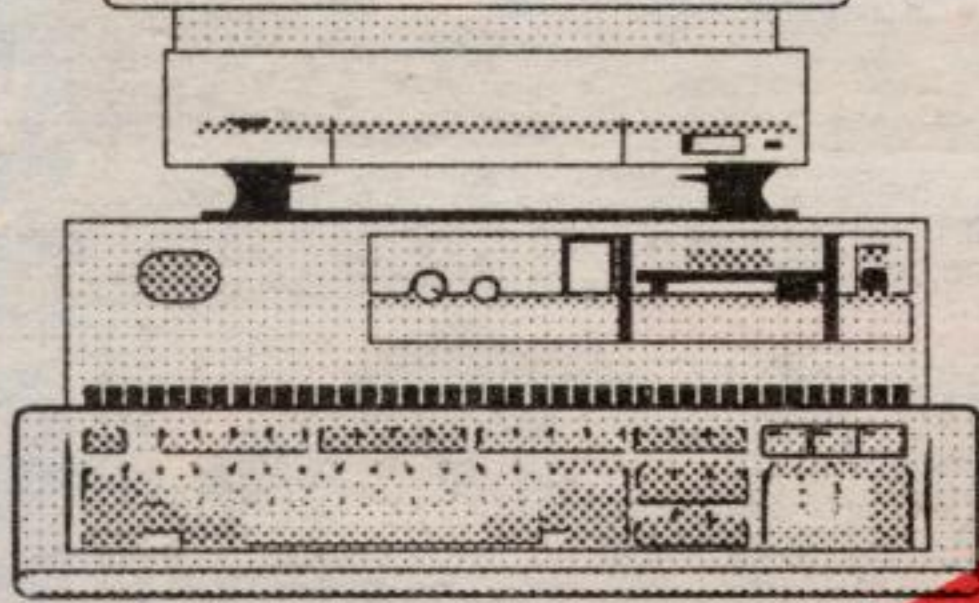


MARKET YOUR HOME TO THE WORLD AT

<http://www.royallepage.ca>

- LISTING BY PROVINCE
- SPECIAL SERVICES
- SALES ASSOCIATE PROFILES



Over 20,000 Royal LePage listings for you to view today.

ROYAL LePAGE

(905) 877-0173
TORONTO(905) 874-3068

ROYAL LEPAGE
Real Estate Services
Ltd. Broker

170 Guelph St.
Georgetown, L7G 4A7



Gary Brand
FRI**



Marilyn Champ*



Richard Judd*



Nancy Kelman*



Tony Maan***



Mary Maan*



Betty McKend*



Donna Robbins*



Julia Stuart*

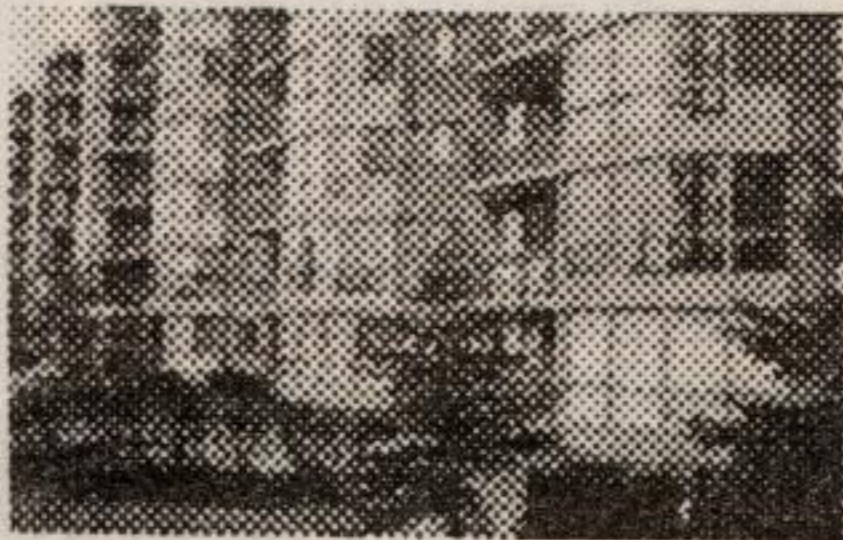


Susan Whitteker*

Sales Assistant *** - Associate Broker ** - Sales Representative *

SPECTACULAR VIEWS

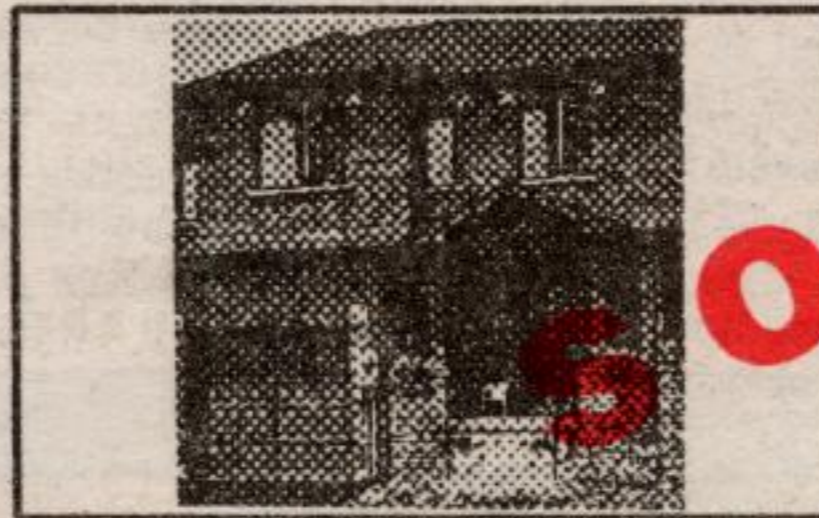
\$134,900



Gorgeous condo with huge windows for spectacular views. Open concept layout. Kitchen overlooks living room and dining room. Master bedroom w/ ensuite. Many other extras incl. in bldg.
Susan Whitteker*
Sales Rep. 31-140

ASSUMABLE MORTGAGE!

\$169,900



1 year old freehold townhouse for the first time buyer. Ceramic tiles, ensuite, walk-in closet, dishwasher.
Donna Robbins*
Sales Rep. 13-26

NIAGARA ESCARPMENT



Only minutes from Georgetown. No compromise in material or workmanship. Pool. Call for full colour feature sheet.

Gary Brand**
Assoc. Broker
Res. 877-8826 8-1

2 ACRES WITH STREAM

\$69,000

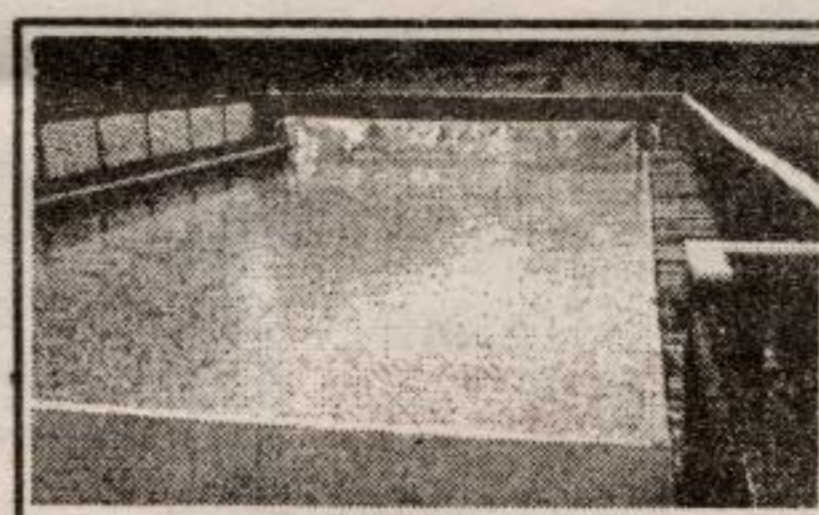


Here's your chance to turn in that large house and build a smaller one with more property.

Nancy Kelman*
Sales Rep. 5-26

4 SEASONS CLASSIC

\$219,900



1.86 acres - 1500+ sq. ft. home, one-half of acreage is vacant land. Drive by 13194 #7 then...call Nancy.

Nancy Kelman*
Sales Rep. 3-8

BUNGALOW PLUS SHOP!

\$229,000



Looking for large outbuildings and a home? This property would suit a home based business. Call for details.

Julia Stuart*
Sales Rep. 31-128

YOU MUST SEE THIS!!!

\$194,900



Many renovations & improvements make this a truly unique home. Large, eat-in kitchen overlooks private backyard. Floor-to-ceiling FP in living. Separate 100 amp service in garage/workshop.
Susan Whitteker*
Sales Rep. 31-152

LAND! LAND! LAND!

\$69,000 to \$975,000



97 acres on Caledon Mountain. 100 acres with river. 170+ acre tree farm. 15 acres on Caledon Mountain. 2 acres backing onto golf course.
Richard Judd*
Sales Rep.

BEST OF OLD & NEW

\$199,900



Renovated century home in Glen Williams. Features include wood floors, 3 skylights, professionally landscaped gardens & more.

Marilyn Champ*
Sales Rep. 4-90

CREATE YOUR DREAM

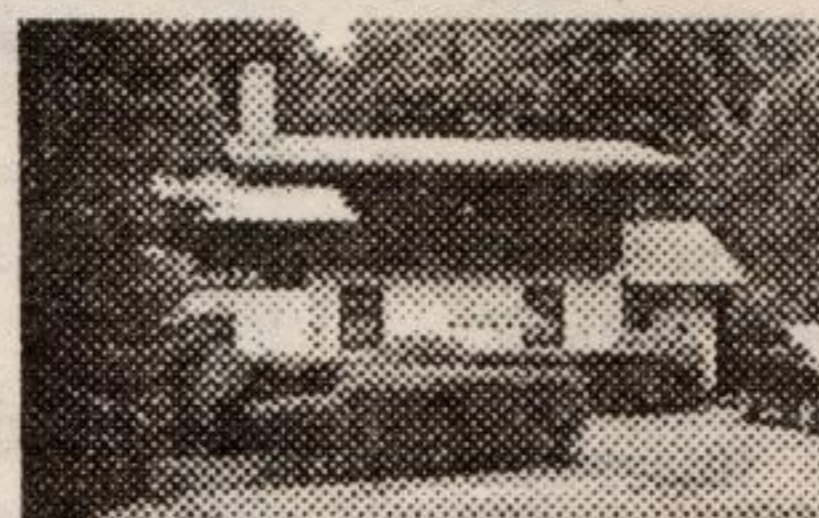
\$459,000



92 acres of scenic land on the edge of Georgetown waiting for your dream estate!! Vendor says 'bring and offer!'

Marilyn Champ*
Sales Rep. 4-86

COUNTRY HOME IN TOWN - \$239,000



One of a kind renovated old farmhouse featuring cathedral ceiling & spiral staircase. Overlooking the Credit River Valley.
Mary Maan*
Sales Rep. 31-153

A POOL - A WORKSHOP - A HOME

\$169,000

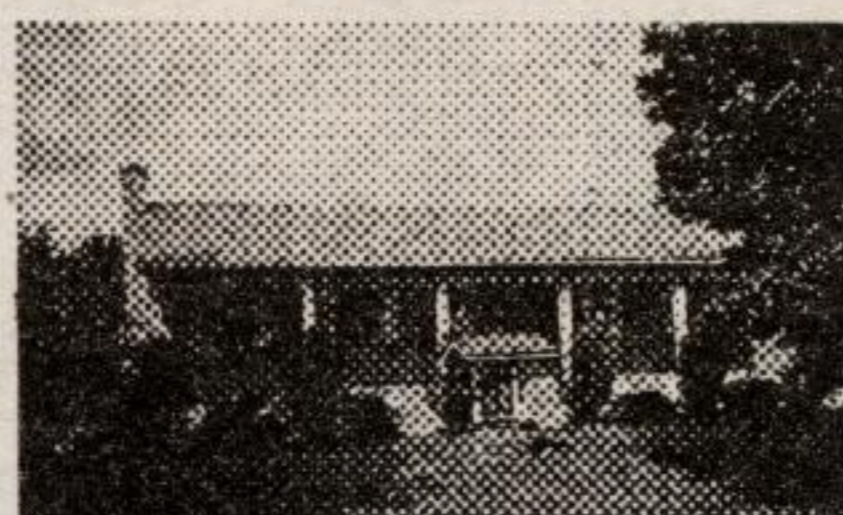


Spacious, immaculate 3 bedroom home with big kitchen. Steel workshop with hydro-overhead door.

Betty McKend*
Sales Rep. 32-66

WELCOME!

\$215,000



Come to the country! Enjoy this family home with eat-in kitchen, 2 walkouts, fireplace, overlooking golf course.
Donna Robbins*
Sales Rep. 13-25

READY TO GO!

\$119,000



Corner commercial lot in core area of Village. Would suit professional building.

Julia Stuart*
Sales Rep. 32-61

OPERATING TREE FARM!

\$840,000



Enjoy the solitude of 170+ acres & earn income from 170,000+ trees ready for sale. Only 6 minutes from Georgetown.

Richard Judd*
Sales Rep. 5-98

EAST - WEST VIEWS

\$97,900



Vacant building lot - 2 acres. Area of country homes and farms. Paved roads. North of Acton.

Call Betty McKend*
32-53

BIG HOUSE - TINY PRICE TAG!

\$149,800

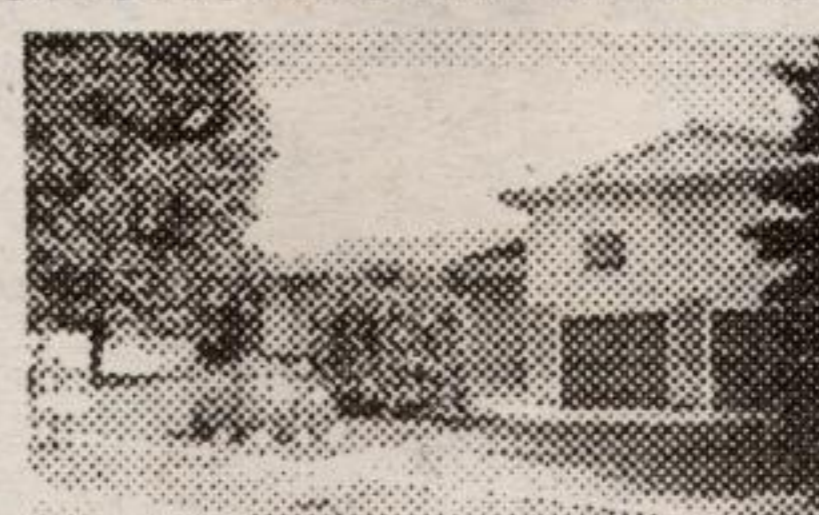


Needs work - real handy man special. 13 rooms (5 bdrms), extra large lot. Used as a duplex. 2 hydro meters, 2 kitchens.

Mary Maan*
Sales Rep. 31-149

GEORGETOWN'S FINEST

\$239,900



3 bdrm home on Noble Court has 2 more on the lower level - pride of ownership throughout. Garden with both flowers & herbs and provides year-round enjoyment of the ravine.
Gary Brand**,
Assoc. Broker. Res. 877-8826 8-7