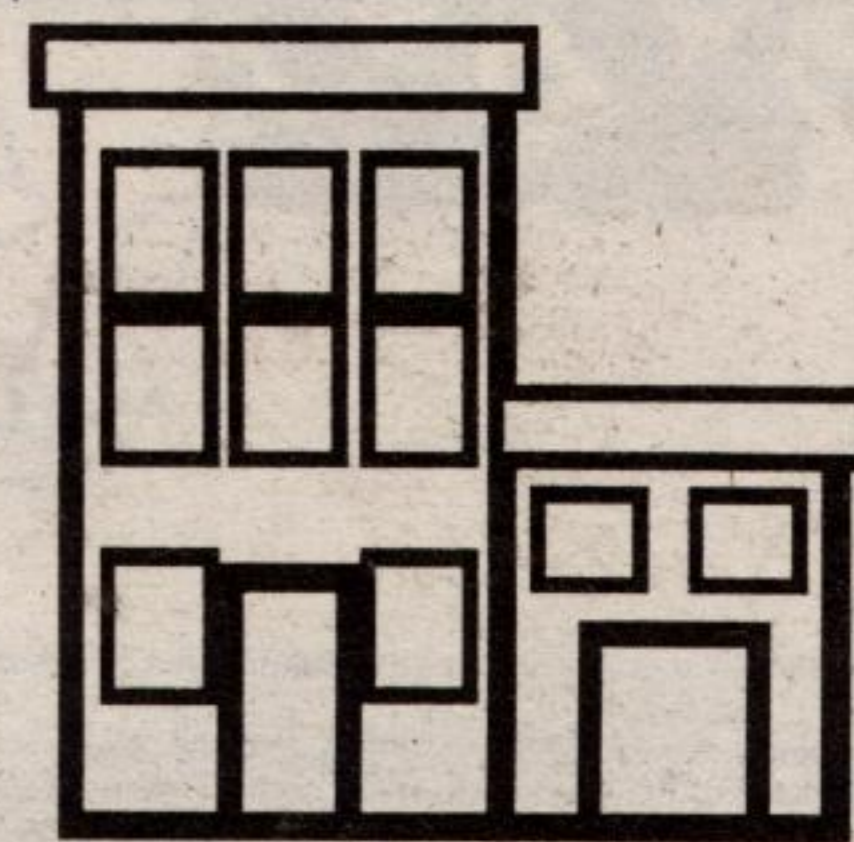


Campbellville



A country experience awaits visitors to the area

Only minutes from the bustle of Highway 401 nestles the tranquil village of Campbellville. The attractions of this small community spread far beyond village streets to the surrounding countryside.

Treasures offered in this community range from antiques and craft stores to beautiful conservation and wildlife areas. All of these places of interest are easily found with the help of a detailed map available at

most of the stores. The map includes a description of each store and place of interest.

The village and surrounding area boast 30 antiques dealers specializing in country and formal furniture, art, books, china, stained glass windows and much more.

Campbellville is the perfect destination for a family outing. There is so much to see and do that a day trip will only whet your appetite. Visit Crawford

Lake, a conservation area perched on the Niagara Escarpment. Here is a lake that contains much information about the natural and cultural history of the area. Studies led to the discovery of one of the most accurately dated Iroquoian Villages in Canada. The Halton Region Conservation Authority has

reconstructed this 15th century village as a way of preserving the native heritage of the area.

To the west of Campbellville, you will find Mountsberg Conservation area. Twenty kilometres of beautiful hiking trails and a Wildlife Walkway with live bird exhibits and buffalo await you. Mounts-

berg is famous for its program of treating injured raptors and has the second largest bird banding program in Canada. There are many special events for wildlife enthusiasts, offered throughout the year. If you are inter-

ested in the history of agriculture heritage, the Ontario Agricultural Museum is close by and certainly well worth a visit.

Summer is a great time to discover the colourful oasis of the Campbellville area.

THE EARLY HOUSE AT 54 MAIN ST. N.

You will find 6 Antique Dealers specializing in Furniture • Jewellery • Toys • Crystal and other collectables including Decoupage and Victorian style crafts.

Store Hours: 11 a.m. - 5 p.m. Friday to Monday or by appointment, (905) 854-1667

Dealers: Blue Suede Shoes • Fresh Exposure • Pauline's Reflections • Cardinal Group • Whimsical Touch

ROBIN'S of Campbellville

For Hair and Skin Care

Robin Mustapha
For the month of July -
15% off all Skin Care

70 Main St. S., Campbellville (905) 854-0376

Monday thru Saturday - Early morning & evening appointments available

POTTERY

Functional and decorative Stoneware, Porcelain and Raku handmade by 20 of Ontario's finest Potters. Glass, Custom Furniture, Victorian Screen Doors



1846 LOG HOUSE CRAFT GALLERY
2334 THIRD SIDEROAD, AT SECOND LINE, RR#2
CAMPBELLVILLE, ON LOP 1B0 PH/FAX (905) 854-0311
Open daily 10-6

Old is Beautiful Antiques

Take a drive in the country and visit our newly renovated c.1860 barn filled from top to bottom with unique country furniture (mostly pine) & primitives.



(905) 854-0809
or
1-800-393-0313

We're located in Moffat - 10 km northwest of Campbellville
(Guelph Line north to 15 Side Road, west to 1st Line)
or 9 km east of Morrison via Wellington Rd. 36.

Open 7 Days 10 to 5 - Just follow our Signs.

Wyget Woods Art Gallery & Conservation Framing
Originals, Prints, Sculpture & Gifts
"Come and relax in our country setting"
8 km north of Hwy 401 Wed. to Sun. from 2 to 6 p.m.
2 km east of Guelph Line Other times by appointment
on 20th Sideroad (905) 854-2173

ADULTS • CHILDREN • INDIVIDUALS • FAMILIES • COUPLES

- Depression
- Grief / Loss
- Low Self-Esteem
- ADD/ADHD
- Relationships
- Sexual Abuse

Is your Life Satisfaction suffering because of these or similar concerns? Then Call:
ELAYNE M. TANNER
B.A., B.S.W., M.S.W., C.S.W., DIP.SOC.ADM.
* Counselling & Psychotherapy
Confidentiality Guaranteed (905) 854-0801

Great Crawford Lake Indian Village
*2 reconstructed longhouses
*archaeology exhibit
*native garden and trails
*interpretive staff
Located on Guelph Line,
4 km south of Campbellville.

Mountsberg Centre for Birds of Prey
*living museum with more than 20 species of hawks and owls
*raptor hospital for injured birds
*exhibit gallery with video theatre
*live bird demonstrations
Located 4 km west of Campbellville.
For more information, call (905) 336-1158
Halton Region Conservation Authority

UNDER NEW MANAGEMENT
OPERA EMPORIUM CAFE & GRILL
Smokehouse restaurant
• Breakfasts • Lunches •
• Afternoon Teas • Dinners •
We serve Sealtest Ice Cream
Over 32 flavours available

Take Out: • Hamburgers • Hot Dogs • Whole Chickens • Chicken Wings • Ice Cream	Capuccino & Espresso We serve 6 flavours of gourmet coffee We grind our own coffee
--	---

Watch for our new menu
OPERA EMPORIUM BAKERY
Donuts, Bagels, Danishes & Croissants
COMBOS AND KIDS' MENU NOW AVAILABLE

Watch for
LIVE ENTERTAINMENT
Piano music, Clowns, Magicians and Lots More!

Open 7 days a week until 9 pm
Phone 854-1725
Fax 854-3243
6 Main St., Campbellville LOP 1B0

VILLAGE ANTIQUES OF CAMPBELLVILLE
36 Main Street N.,
Campbellville, Ont. LOP 1B0
(905) 854-0669
Specializing in country and traditional furniture, Canadian art, pressed glass, antiquarian books, fine china, primitives, textiles and more!
10 dealers
Open daily 11 - 5