

ACTON Travel

with
Bruce Hood



Egypt: A new Cdn tourist attraction

Well, it's not really a "new attraction," but the amount of people travelling to Egypt almost doubled in the first four months of this year. Over 13,000 Canadians arrived there and stayed for a longer period than in the past. It definitely is a tourist mecca!

▲▲▲

A cruise on the Nile between Luxor and Aswan with its many attractions, plus a stopover in Cairo to see all the amazing sites makes for an outstanding memorable trip. Egypt is the "cradle of civilization," where the development of culture and civilization is there to see in the many carvings, the hieroglyphics.

▲▲▲

The Pyramids are right there on the edge of town—yes, within minutes while in Cairo you can be in Giza and ride on a camel to visit the pyramids! They are as stately and magnificent as you imagine when you see pictures, and you can even go inside one!

▲▲▲

The Sphinx, one of the most famous monuments in the whole world is a legendary statue, and is located right near the pyramids. It has the face of a man and the body of a lion. The Sphinx and the Three Pyramids are regarded as one of the Seven Wonders of the World. It is 70 m long and 20 m high—certainly breathtaking!

▲▲▲

The museum in Cairo has over 50 centuries of history within its walls and its most significant showpiece is the Tutankhamun Collection. Items removed from the tomb at the Valley of the Kings at Luxor are on display and brings to reality in one's mind the total picture of their reasoning for the huge pyramids.

▲▲▲

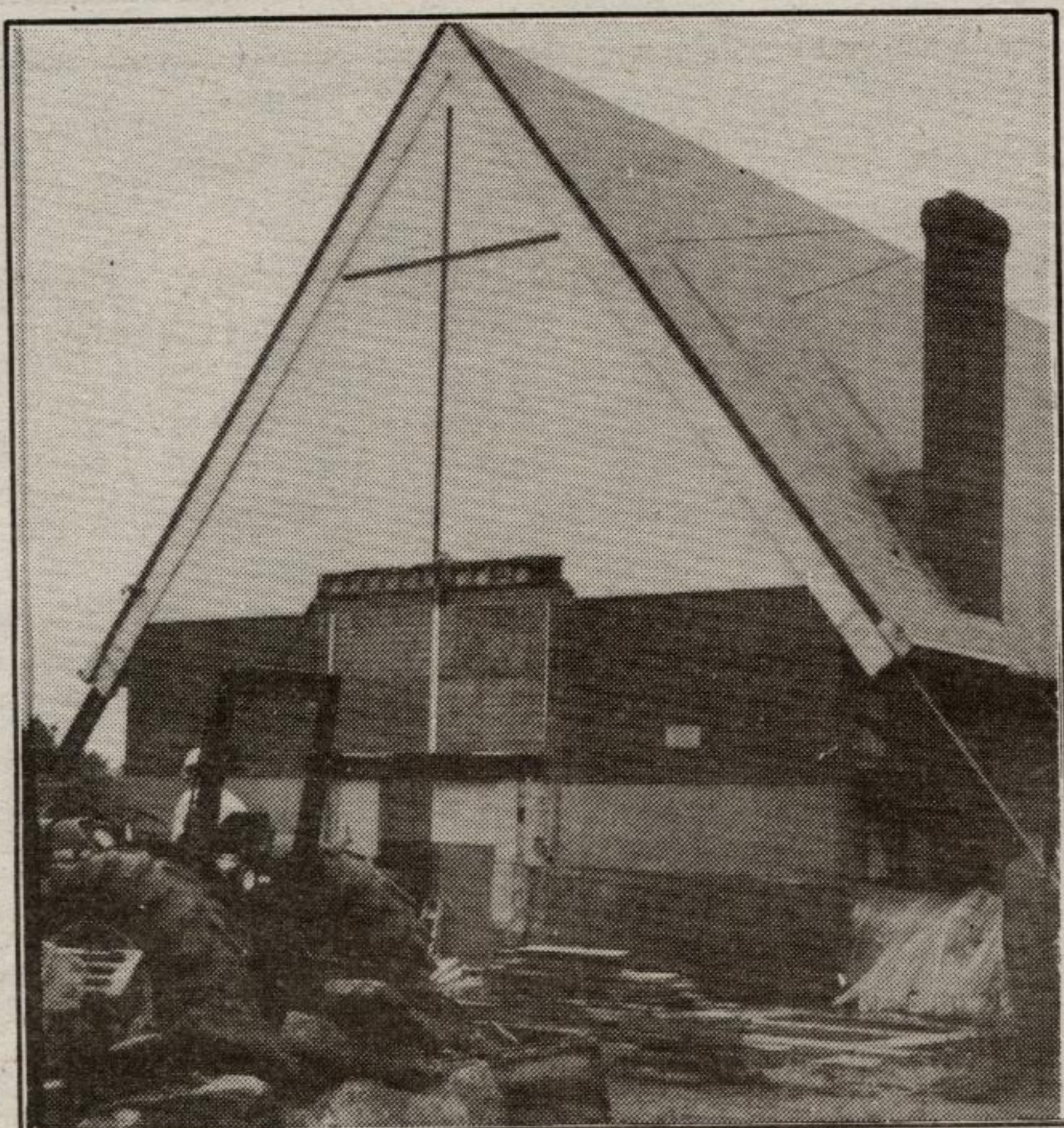
Only 6% of the total lands of Egypt are inhabited and they are all along the banks of the Nile. An historic trip by boat which many say is their "dream," there are almost 300 boats which make the four-day junket between the famous dams at Aswan and the temples and valleys of the kings and queens at Luxor—many tourists take the cruise both ways!

▲▲▲

The amazing light show at the pyramids; riding in the carriages which are so plentiful at most stops; bartering with the many entrepreneurs displaying their wares everywhere; meeting people from many countries of the world; seeing the awesome size of the pillars and other structures created so many years ago—truly a wonderful journey—it hadn't been our "dream," but was one of the most memorable of our travels, and will be tough to match!

▲▲▲

TRAVEL TIP OF THE WEEK:
A cruise on the tall ship "Empire Sandy" at Bronte Harbour during Oakville Waterfront Festival!



The Bethel Christian Reformed Church is changing its size and look this summer. (Photo submitted by Ali Looyenga)

Church expands

Acton's Bethel Christian Reformed Church will almost double in size this summer with construction of a \$400,000 expansion at its Hwy. 7 location.

The expansion will include a new Fellowship hall, kitchen, elevator and handicapped-accessible washrooms, along with meeting and Sunday School rooms.

The church, almost 40 years old, began with an immigrant Dutch population that worshipped in the basement of the church until the upstairs was added in 1963.

"We began planning this construction about three-and-a-half years ago and we have

already raised half of the money we need," church building committee member Ali Looyenga explained.

"The balance of the money we need to complete the work will come from additional donations and the church community. We have 85 families and they are all very committed to raising the money," she said. "Our outreach work is very important to us and we wait for God to work in the hearts of people who hear about our church."

Looyenga, who is making a scrapbook of the construction progress, said that church members are also volunteering their help on the job site.

No stopping on Pearl Crt.

BY FRANCES NIBLOCK

The Acton Tanner

Placing "No Stopping" signs on Pearl Court and Somerville Road is as much as the Town can do to help local neighbours, who have repeatedly complained about some Acton High students who park and sit on the road between the school and houses.

Since the Board of Education banned smoking on school property, the students use the road and boulevard for a smoking area and often stop their cars on the road while they talk with their friends.

Complaints from homeowners include students racing on the street, spitting on and swearing at anyone who asks them to move, and even some vandalism of cars and property belonging to homeowners who have confronted students.

Acton Councillor Gerald Rennie, who met with police, school officials and local residents, admitted that the signs won't really alleviate the problem.

"The signs will mean that students who stop their cars on Pearl Court to chat with their friends will be doing

something illegal and can be charged," Rennie said recently.

"Once the signs are up people can call the police and charges can be laid, although no one expects the police to be there all the time."

Rennie said attempts to swap some Town land for school land to make a new out-of-the-way smoking area were rejected by the Halton Board of Education.

The new restrictions ban stopping on Pearl Court and Somerville Road, Monday to Friday between 8 am and 5 pm.



A DAY TO REMEMBER: Marjorie Landsborough was given a going-away party at the Acton Baptist Church last Sunday, and was joined by Rev. Tom Cullen, her granddaughter Janice Landsborough, 7, and son Ralph Landsborough. (Eve Martin photo)

Dan C. Dolliver

ONTARIO LAND SURVEYOR

Legal & Topographic
Surveys

54 Mill St. E.
Tel. 853-2502
Fax 853-1504



BRAIDA & HENRY

Barristers & Solicitors
SERVING ACTON
SINCE 1955

67 Mill Street East
853-1160

Scotiabank

36 Mill St. E.
Acton

Partners with
The Community
George Hume, Manager

853-2420

Use this space
to advertise your
business for
as little as
\$10 per week!

CONSTABLE RIDDLE'S CORNER

WITH VILLAGE CONSTABLE
BILL RIDDLE



Security and Safety

You can help to increase the safety of your home and neighbourhood by joining a community policing initiative to prevent crime. Through proper attention to home security and protection, you can reduce and discourage unlawful residence entries and enjoy the comfort of your home. Follow these simple and effective measures:

- Join Operation Identification—a program which discourages theft of valuables and identifies stolen property. Maintain an inventory of all household possessions.
 - Install dead bolt locks on all exterior doors and self-tapping screws in the upper track of patio doors and windows.
 - Ensure that entry locks are changed if you are a new tenant or owner.
 - Secure all basement and ground level windows and patio doors. Use lexon glass where appropriate.
- More on this next week.

ACTON PHARMACY

Taking Care of You!

MON-WED, 9 TO 7
THURS-FRI, 9 TO 9
SAT, 9 TO 6

Rx Downtown Acton
853-1620

WU HALTON CREDIT UNION

Mon. - Wed. 9am to 5pm
Thurs. - Fri. 9am to 8pm
Saturday 9am to 1pm

Harold Postma, Manager
273 Queen St. E. 853-0911

BLOOMS AWAY

Huge selection of
Fresh Flowers!

75 Mill St. E., Acton
853-5534

MACKENZIE & CHAPMAN

GENERAL LAW PRACTICE

Serving Acton, Rockwood
& Surrounding Areas

33 Main Street South
853-1330

NELLIS CONSTRUCTION

- EARTH MOVING
- EXCAVATING

R.R. 1, Acton



853-0960

TYLER TRANSPORT LTD.

"Service That Satisfies
Since 1929"

"Transporting Your Children
Safely Since 1948"

853-1550

Fond farewell to church member

Friends and family of long-time Acton resident and Acton Baptist Church member Marjorie Landsborough said a fond farewell to her on Sunday.

Landsborough, 85, is moving to a retirement home in Guelph where two of her sisters live and she will be sorely missed.

Landsborough, described by Janet Cullen at Acton Baptist Church as a woman with "endless energy and a joy for life," was born in Erin Township and moved to Acton in 1934. She married the late Charles Landsborough and raised seven children in Acton.

Her son Ralph Landsborough said his mother, who never had a driver's licence, always walked all over town and was always very active.

"Mom was always very involved in the Church's Mission Circle and in the choir and the Acton Horticultural Society," Landsborough said.

"She never drank or smoke and she never sat still. Maybe that's why she is still going strong."

Your community-involved
travel agency. For the best
routing, best fares, best
service—come see us!

56 Mill St. E.
853-3580