

Centennial's spelling document receives funding

BY KAREN WETMORE
The Rockwood Miller

Rockwood Centennial school will be able to expand the uses of its spelling document, thanks to funding it received from the Ontario Teachers' Federation.

A committee of teachers, parents and administrators put together the document, which is used as a teaching guide, in June 1995. The school wanted a spelling pro-

gram that would be applicable to every level of student.

This is the first school year for it to officially be used, although spelling has always been emphasized in the school, said Jan Gregg, vice principal. Learning to spell is a very important aspect of schooling, she added.

"Spelling goes beyond language arts into other subjects such as history, geography and French."

Part of the \$1,375 in funding will pay for workshops to fully explain the teaching methods in the document to both parents and teachers. It will also be shared with schools such as Eramosa P.S. and high schools attended by Centennial grads.

The document includes a list of the top 500 words used in English. Students who can spell these words, said Gregg, will be able to

spell 80 per cent of all of the words they come across.

The list is broken down into groupings of words for different grade levels. Teachers know what level a student has reached through spelling tests using words from these lists, said Gregg.

The method for teaching spelling includes both phonics and whole language, but weekly spelling tests are still an important part

of the process.

"Fifteen or 20 minutes of formal spelling lessons a day won't hurt anybody," Gregg said. "And although students won't learn to spell by only studying 10 words per week, there's more going on around them to get them to learn."

Centennial's spelling document will be reviewed at the end of this school year to see how well it worked for the school.

M The Rockwood MILLER

"With Natural Gas in Rockwood, We're Ready to Serve You"

No Payment For 90 Days
Call Today

LENNOX

HENK OOSTERVELD
HEATING & AIR CONDITIONING INC.

1007 YORK RD., GUELPH

837-2351

It's the Experience!

RE/MAX

Blue Springs Realty
(Halton) Corp.

856-4348 • 853-2086
905-874-3053

JOHN BARTLETT
* Sales Representative




ALL THAT JAZZ: The Andy Klaehn Quartet played to an appreciative crowd at Rockwood Presbyterian Church recently. The quartet includes Ron Hanna on bass, left, Andy Klaehn on saxophone and keyboard player Bill Gillard. (Eve Martin photo)

Resident donates ice surfacer for rink

BY DOUG HARRISON
The Rockwood Miller

When Mike Bonus purchased a Champion ice surfacer at a sale in Bolton last October, he figured it was a gamble worth taking.

The Eramosa Parks, Rec. and Culture Committee sure thinks so and is reaping the benefits. Bonus, who bought the surfacer equipped with a three-point hitch that hooks on the back of a tractor, recently donated it to them for use on the Lloyd Dyer rink.

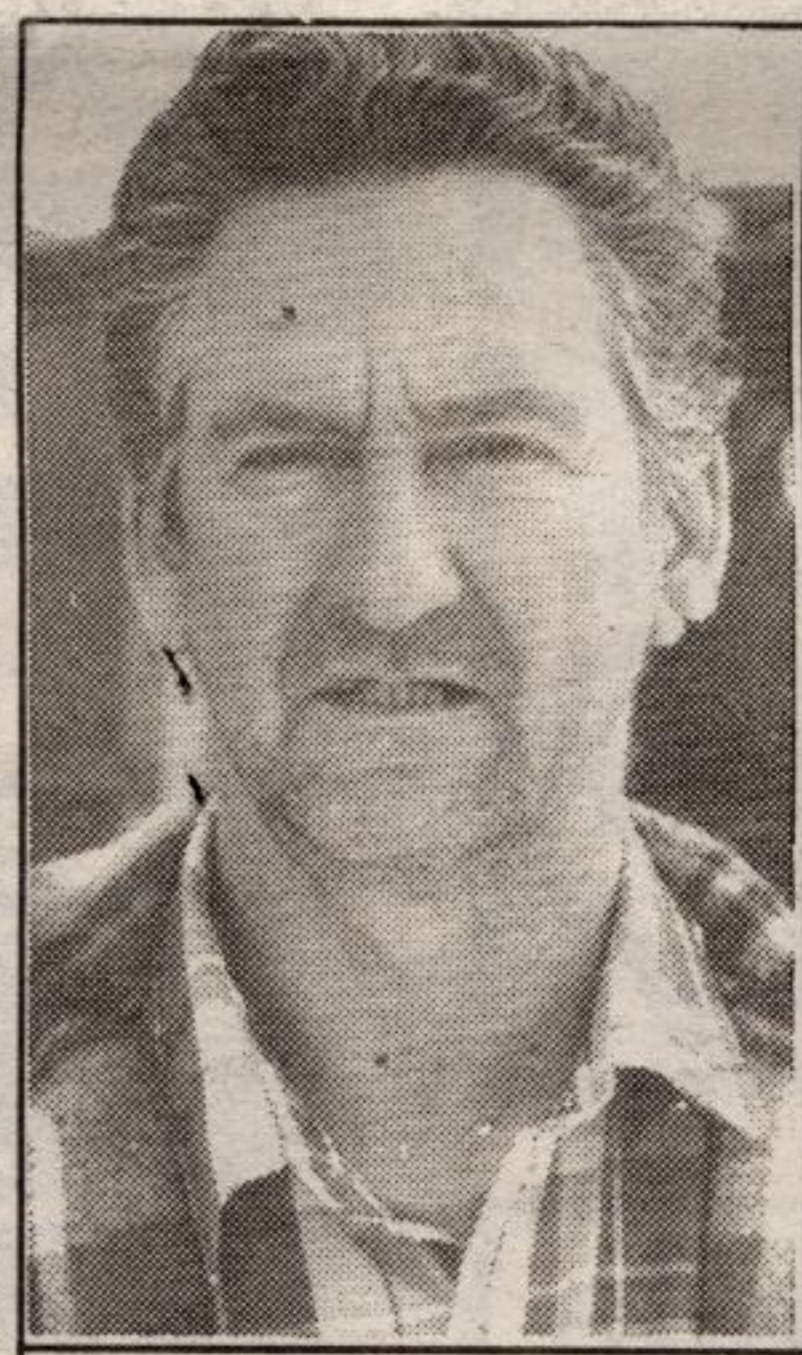
"I thought 'what am I out if they (the committee) don't use.' It would have just sat in a pickup truck behind my house," said Bonus last week.

His son Tim, 17, who plays for the Jr. C Fergus Devils skates at the outdoor rink two or three times

a week.

"I got a good deal," he said. "The new four-wheel drive ones cost \$75,000."

The lifelong Rockwood resident, who runs Mike Bonus Haulage, says the model he bought is still used in arenas in Schomberg and Penatanguishene.



MIKE BONUS

"I figured if they (the Parks and Rec. Committee) could use it, it could help all the kids of Rockwood," commented Bonus, 49.

"Apparently the hose that's currently being used is fine, but it can't get the ice smooth."

Former deputy reeve Ken Mercer, who took over flooding duties this winter from Ron Williams, said he is just waiting for Eramosa Township to hook up the surfacer.

"I'm very pleased," Mercer said of the surprise donation. "I hope the Township puts it to good use. It was a very kind offer."

Added former committee chair Gary Martin: "I want to thank him (Bonus) for a generous donation. Hopefully it encourages more people to donate to the community."

Nicholson's new art show runs through May

Special to the Rockwood Miller
Nicholson's Gallery of Fine Furniture and Original Art has a wonderful new show running through till May 1996. Again with this exhibit we are featuring all local artists.

New to the Gallery are floral

watercolours by Daisy Kurp and collagraphs and serigraphs by Margaret Peter. Wendy Melbye has a small showing of her encaustics. Staying with us for this show are new works by Guelph artist Kirstin Smith, Arend Nieuwland's diverse work and two new wild-

life pieces by Janet Kimantas.

Nicholson's Gallery is open Tuesday to Thursday from noon to 6 pm, Friday, Saturday and holiday Mondays from 10 am to 6 pm

or by appointment by calling 763-5851.

The gallery is located on Wellington Road 22, one-tenth of a mile east of Hwy. 6.

Massage
heals the body
relaxes the mind
revitalizes the spirit
nurtures the heart.

Teresa Gibson-Smye
Registered Massage Therapy
Gift Certificates Available
150 Main St. S., Rockwood
856-9626 856-9701



Appointments
Monday to Saturday
Includes Evenings

Open for Lunch
& Dinner

RESERVATIONS
RECOMMENDED

La Vieille Auberge
262 Main St. S., Rockwood
856-4170

Saunders Bakery, 1994
104 Main St. S., 856-9561

Quality Home Baking
No Preservatives

7 Different Kinds
of COOKIES

\$2.00
per dozen



Tues. - Fri. 8 a.m. - 6 p.m.
Saturdays 8 a.m. - 5:30 p.m.

Nicklin
AUTO PARTS

FREE TOWING

WIDE SELECTION OF PARTS
FOR ALL MAKES & MODELS
OF CARS & LIGHT TRUCKS

ASK ABOUT OUR
120-DAY
WARRANTY



822-0301
1-800-265-8304

SCRAP CAR REMOVAL
CASH PAID - TOP PRICES