

THE 1995 NEW & USED CAR BUYER'S GUIDE

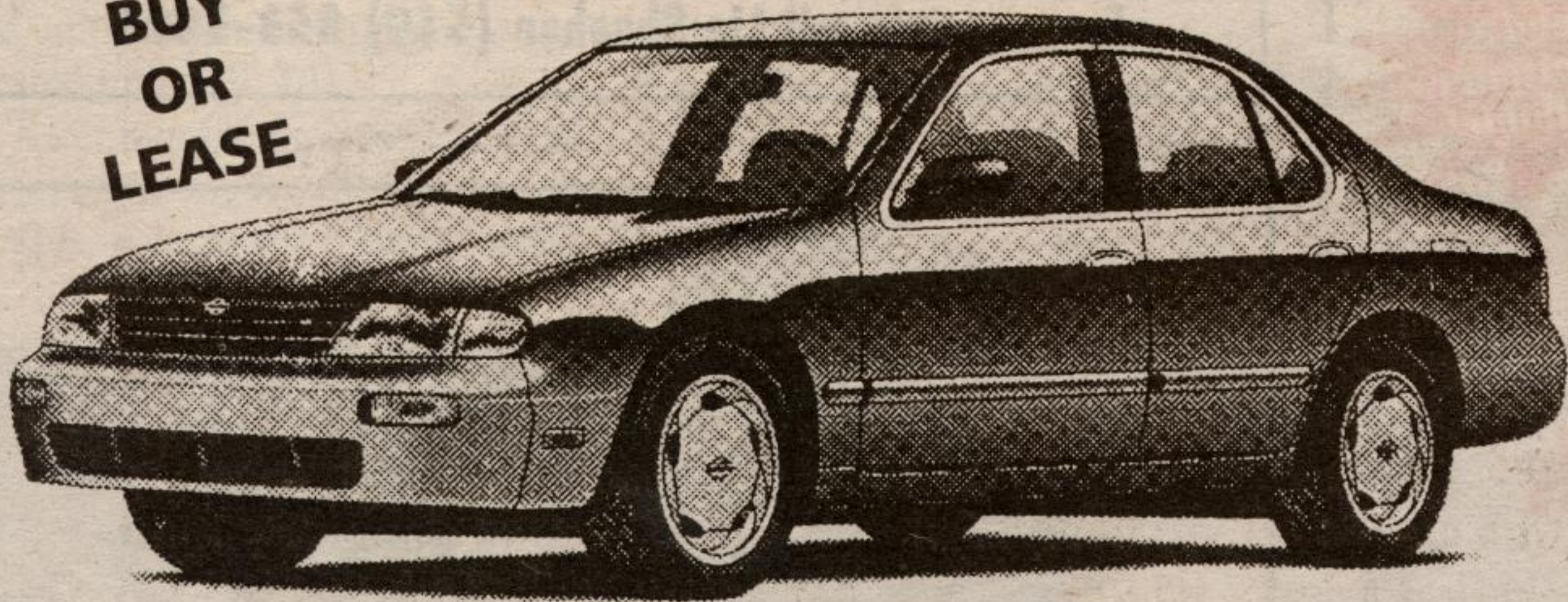


IF YOU'RE IN THE MARKET FOR A VEHICLE, PLEASE REFER
TO THE FOLLOWING ADVERTISERS FOR THE BEST IN:
PERFORMANCE, PRICE & RELIABILITY!

1995 CLEAROUT!

FROM **\$18,990*** '95 Altima GXE

BUY
OR
LEASE



Best new seller in its class. The Altima GXE comes with high marks from A.P.A. Consumers Report, Family Circle and Kiplinger Report.

Comes complete with air, power windows & locks, stereo, upgraded interior and dual airbags. Buy or lease. Automatic transmission extra.



North End Nissan Ltd.
610 Martin Street, Milton
(905) 878-4137

ROBINSON PONTIAC-BUICK-GMC

CANADA-WIDE CLEARANCE!

Year end Value Pricing means great deals for you.



\$16,499
(excludes freight)

\$248 per month/36 month SmartLease plus a down payment of \$2,673 or equivalent trade, security deposit \$300 and freight \$595.

PONTIAC GRAND GRAND AM SE SEDAN

- 150 HP 2.3 litre L4 MFI engine ■ 4-wheel ABS ■ power steering ■ automatic transmission
- power door locks ■ driver's side air bag ■ air conditioning ■ AM/FM stereo cassette

GM Value Pricing – NO-CHARGE OFFER!

Buy or lease your new '95 now and you're covered for 3 years of regularly scheduled lube/oil/filter maintenance.



\$9,995
(excludes freight)

\$188 per month/36 month SmartLease plus a down payment of \$657 or equivalent trade, security deposit \$300 and freight \$500.

PONTIAC FIREFLY COUPE

- 1 litre L3 TBI ■ 5-speed manual transmission ■ tinted glass ■ dual air bags
- high back bucket seats ■ folding rear seat ■ side impact protection



\$23,988
(excludes freight)

\$348 per month/36 month SmartLease plus a down payment of \$3,456 or equivalent trade, security deposit \$425 and freight \$870.

BUICK LESABRE CUSTOM

- 170 HP 3800 V6 SFI ■ 4-wheel ABS ■ 4-speed electronic transmission ■ dual air bags
- electronic air conditioning ■ Cruise control ■ keyless entry ■ pass key theft deterrent

You don't have to wait. We're offering you our best deals of the year earlier than ever!



875 Woodlawn Road West
in the Guelph Auto Mall
(519) 821-0520