

YOUR CAR CARE GUIDE • YOUR CAR CARE GUIDE • YOUR CAR CARE GUIDE • YOUR CAR CARE GUIDE • YOUR CAR CARE GUIDE

## Poor vision tied to 'night' accident rate

Special to The Tanner PLUS!  
Improved highway markings and better automotive lighting are help-

ing to hold down night-time traffic accident, but the after-dark fatality rate is still nearly triple the

daytime rate.

While driver condition (visual acuity, sobriety and other factors) is a big factor in this statistical phenomenon, car condition also plays a major role.

A large number of cars have one or more lights out or have deficiencies in the windshield wipers and/or washer system. With intensified public awareness measures this could be prevented.

Anyone capable of driving should be able to check his or her lights, windshield wipers and washers periodically. It is irresponsible to endanger peoples' lives through simple vehicle neglect.

With the fastest-growing segment of our population, the older driver, another factor becomes very important. Ninety per cent of

all sensory input needed to drive comes through the eyes. But as our eyes change with age, your sensitivity to glare increases, you need more illumination and you'll find you won't adapt as well to the dark. Also, you'll lose some of your peripheral vision.

It makes sense at any age to reduce your vulnerability to an accident and here is some advice from the Car Care Council of the Automotive Industries Association: Be sure you can see and be seen after dark!

For further information contact Denise Faguy, manager of communication services at Automotive Industries Association of Canada, 1272 Wellington St., Ottawa, Ont. K1Y 3A7. Telephone: 613-728-5821.

## Check your brake I.Q.

Brakes: The most critical safety system on a vehicle. After tires they are the leading vehicle defect among highway accidents.

How much do you know about the brakes on your car? Here's a mini-quiz that offers a few pointers on the subject:

1. If your car pulls to the left when brakes are applied,

- a) your left front tire may be underinflated;
- b) your right front brake isn't functioning properly;
- c) your left front wheel bearing may be failing;
- d) all of the above.

Answer: (d).

2. When brakes squeal you should,

- a) replace pads and linings;
- b) have rotors resurfaced;
- c) ignore the noise; it's normal;
- d) have a mechanic check it out;
- e) all of the above.

Answer: (d). Although inspection may disclose that one or more of the answers also apply. Brake squeal is common, sometimes indicating the need for corrective measures.

Watch for more questions in upcoming editions of Plus!

# ACTON AUTO TECH

## Serving all your car and truck needs

Floyd Foster • Norm Foster  
John Schreiber • Trefor Gardener  
Richard Leslie • Kevin Kamminga

45 Main St. N., Acton

853-4144 **A<sub>T</sub>A** **AUTOPRO**

# ACTON MOTORS

Servicing All Makes  
Selected Used Cars

853-1280



NORMAN  
PAULSEN



# MCEACHERN

STEERING SPECIALTIES INC.

Steering - Suspension  
Front & Rear Alignment  
After Collision Alignment  
4 x 4 Alignment  
Front Wheel Drive Service  
& Alignment  
On-Vehicle Balancing  
Ford Truck Twin I-Beam Bending  
Springs • Shocks • Balljoints  
Etc.

- Bill McEachern -

33 Armstong Ave., Georgetown

Phone 877-9411

# KIYO'S

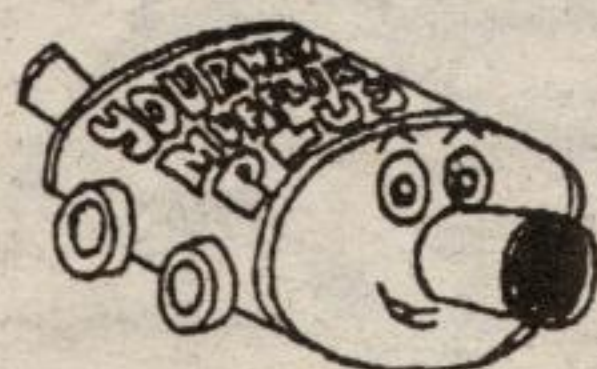
Japanese Car Service

WE SPECIALIZE IN  
JAPANESE CARS

21 Mill Street, Georgetown  
(905) 873-0550



## We're Acton's Only Exhaust Specialists!

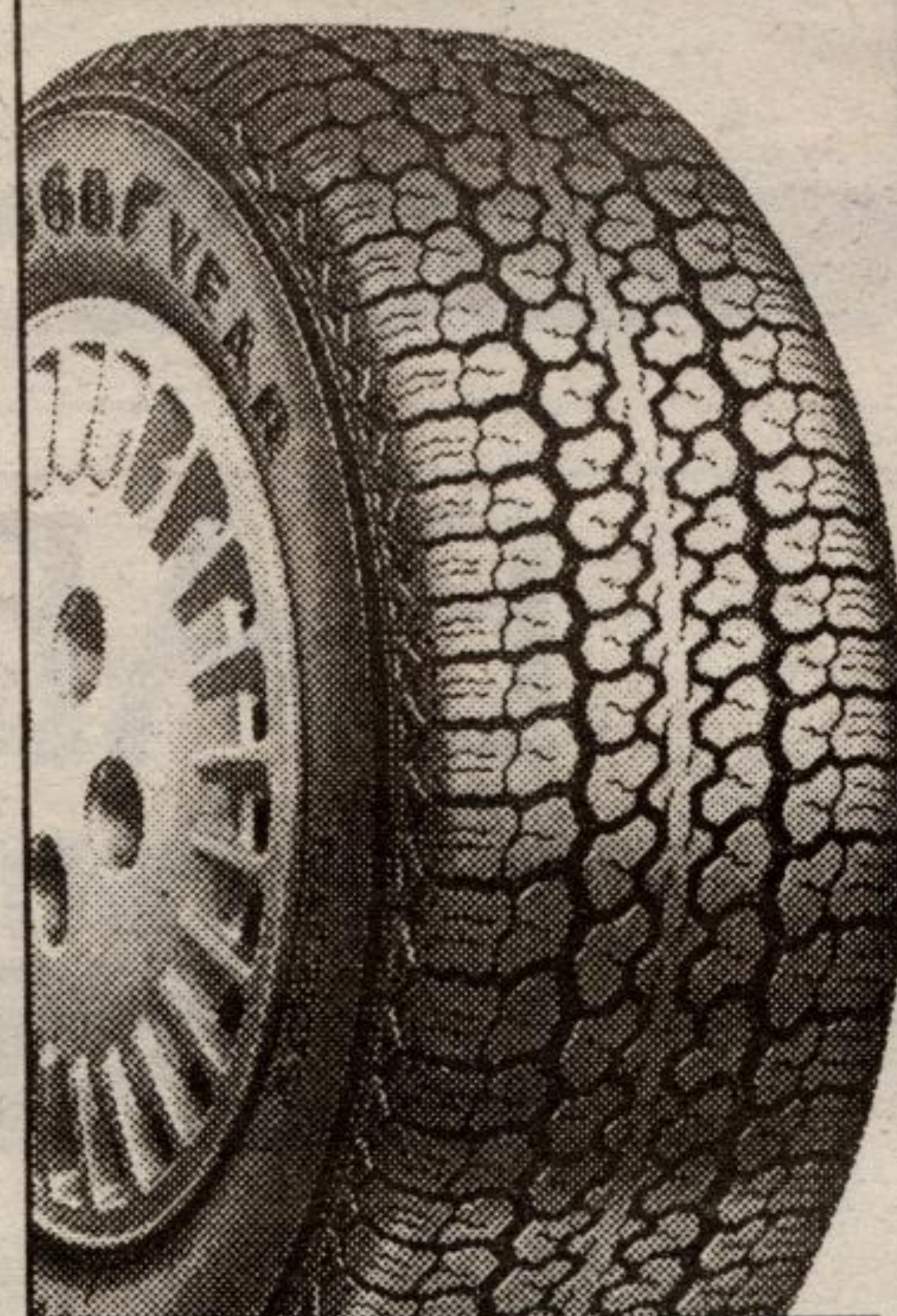


- Custom Pipe Bending
- Licensed Safety Inspection

**YOURWAY MUFFLER PLUS**

17 Agnes St., Acton • 853-0900

## Hottest Tire Prices Of The Summer.



**T.T.S.**  
Total Tire Service

Included with every new Goodyear tire purchase:

- No charge 30 day trial
- No charge installation
- No charge lifetime rotation
- No charge brake inspection
- No charge road hazard warranty
- 30 day No interest/No payment OAC
- Air Miles travel miles

See participating retailer for details.

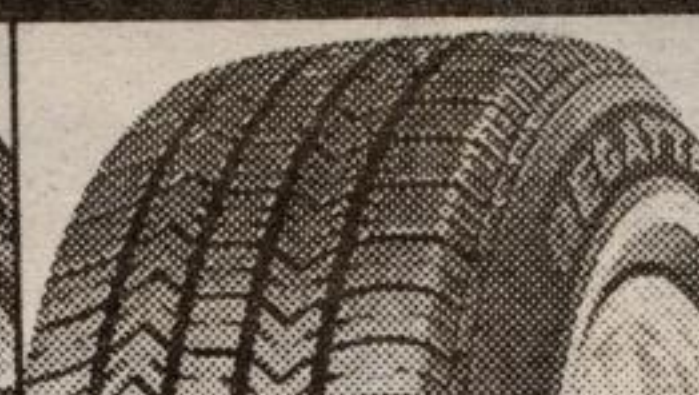


Earn 1 AIR MILE travel mile for every \$8 spent on all Goodyear passenger and light truck tires and service including the great values listed in this ad. At participating retailers only. Tire Event ends September 16, 1995. Call for additional sizes and sale prices. Retailers may sell for less.

### Passenger



**Corsa GT**  
**\$49<sup>95</sup>**  
175/70R13 BSL  
185/70R14 SBL \$53.95



**Regatta**  
**\$59<sup>95</sup>**  
P155/80R13 XNW



**Goodyear Intrepid**  
**\$67<sup>95</sup>**  
P195/75R14 XNW \$71.95  
P185/70R14 XNW \$71.95  
P205/75R15 XNW 79.95

**GOODYEAR**  
High  
Performance

### Low Price Radials



**Eagle ST**  
**\$86<sup>95</sup>**  
P205/70R14 93S RWL

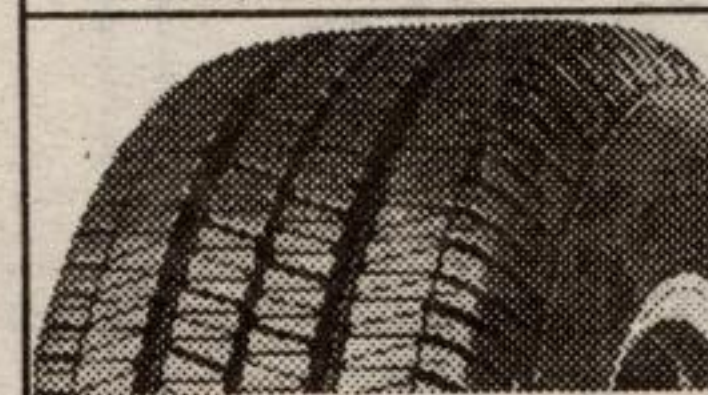


**CONCORDE**  
**Value Mark**  
**\$28<sup>99</sup>**  
P165/80R13 \$41.99



**CONCORDE**  
**SR Radial**  
**\$62<sup>00</sup>**  
P185/70R13 \$68.00

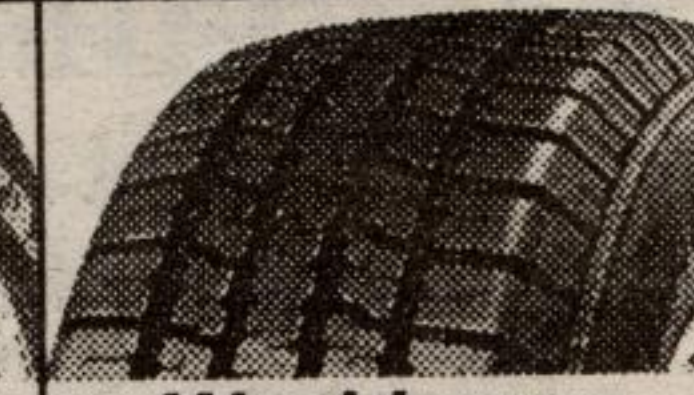
### Light Truck



**Eagle GA**  
**\$111<sup>95</sup>**  
P225/60R16 97S BSL



**Wrangler AT**  
**\$118<sup>95</sup>**  
P235/75R15 XL OWL



**Workhorse**  
**\$131<sup>95</sup>**  
LT235/85R16 E10

Tires, Tune-Ups, Shocks, Brakes, Alignment, Oil, Lube and Filter.

45 Ontario Street North, Milton

(905) 875-1502