

# Roberts pitches Acton Precision to Pee wee pennant over Hornby

**Special to The Acton Tanner**  
On Friday and Saturday, the Acton Precision Millwrights Pee wee Girls' softball team hosted the Tri-County championship tourney and proved to be greedy hosts. The locals prevailed against an exhausted, but extremely hard-working Hornby team to claim the 1995 crown.

Led by the hitting of Melissa Goy, Jenn Roberts, Tara Hargrave and Jillian Jahn, Acton outslugged Ponsonby 16-6.

The win set up a Saturday morning encounter with arch-rival Glen Williams.

This proved to be Acton's best showing as timely hitting and the aggressive baserunning of Becca Behling and Steph McKay, who stole an incredible 13 bases in four games, resulted in a 10-8 Acton victory.

It also meant a berth in the final against Hornby.

Because Hornby had already lost one game in the tourney and the locals had not, Hornby would have to take two games from Acton for bragging rights.

They put a scare into the Acton in Game 1, toughing out a 16-15 win.

However, Game 2 belonged to Roberts.

She struck out an astounding nine batters over her five innings of effective work, leading Acton to a 18-9 doubling and the championship trophy.

Roberts' masterful and timely performance earned her the nod as

playoff MVP for Acton.

Supporting Roberts at the plate were Jamie Lyons, who racked up seven RBIs with a 3-for-3 showing and Gillian Berry's three walks and three runs scored.

McKay also went 3-for-3 and recorded seven put outs from her post at shortstop.

Tournament highlights for Acton included homers by Lyons, Roberts, Hargrave, the solid catching by Jahn, McKay's whopping .900 on-base percentage and tremendous support by Goy, Behling, Berry and Kate Mahon.

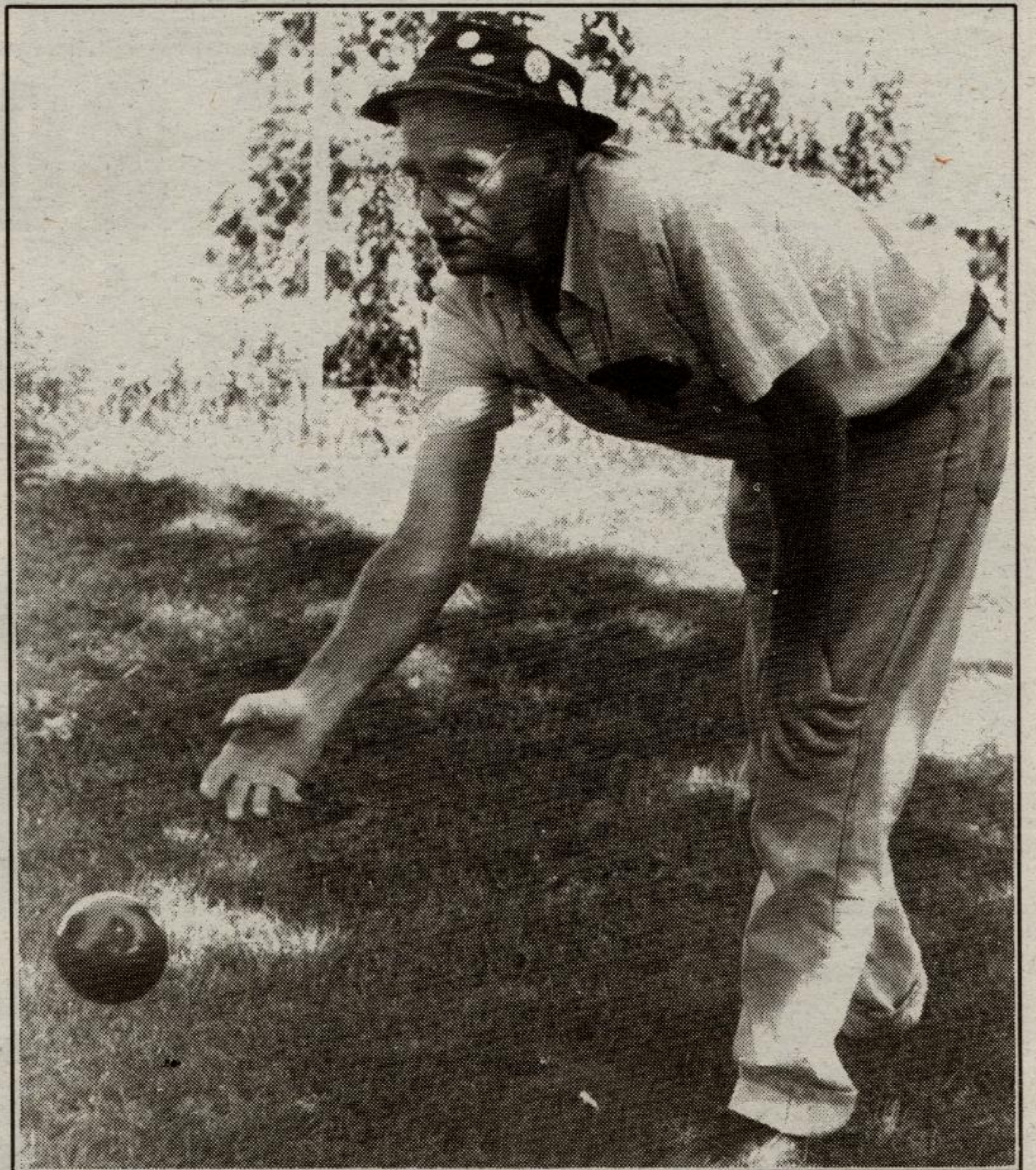
Missing from the lineup was Tricia Johnson who was on a family vacation.

**NOTE:** Acton head coach Pete Hargrave and his daughter, Tara, took part in the tournament, surrounded by less-than-ideal conditions.

Coach Hargrave lost his father-in-law to cancer just hours before the first pitch was thrown to start the weekend festivities.

Despite the circumstances, Hargrave was tremendous in leading his girls to the title.

The entire team thanks him for his dedication and support.



**BOCCE BEGINNER!** We caught Acton's Ken McClure delivering a shot while playing Bocce ball outside the Acton Seniors' Centre at the arena on Friday. His buddy, Frank Thompson, was showing him the tricks of the game. (Doug Harrison photo)

## STARTING A NEW BUSINESS?

Call your Welcome Wagon hostess. She will bring greetings and good luck to you and your new venture.



Michelle: 877-1441



## Len Tuitman & Staff present... Green Thumb Gardening

### Pretty Potentillas

This flowering shrub is small in size, but big and bold when it comes to beauty, and is easy to grow too!

Potentilla (or Cinquefoil) can survive in poor soils but does best in fertile, well-drained soil. When planted in full sun, this hard shrub will flower profusely from June until frost. It is one of the longest blooming flowering shrubs. Each flower can be up to one inch in size, but the abundance of flowers produce a blaze of colour. Cinquefoil shrubs are available in white, red or yellow flowers.

**Abbotswood** is the white flowering variety, which reaches 3-4 feet at maturity.

**Red Ace** is considered a red, however, it usually fades to a lovely orange-red colour. The Red Ace is one of the small varieties, attaining a height of two-and-a-half feet at maturity.

Many yellow flowering varieties are available. **Gold Drop** or **Farreri**, **Goldfinger** and **Jackmani** all produce brilliant yellow flowers on dainty three-foot branches.

Each week Len Tuitman and staff of Tuitman's Garden Centre and Landscaping will be presenting helpful tips and information to assist you in creating your garden showplace.

Highway 25, one mile south of Acton  
853-2480



## HEARING AID CENTRE

M. LANNUZZI, H.L.S.

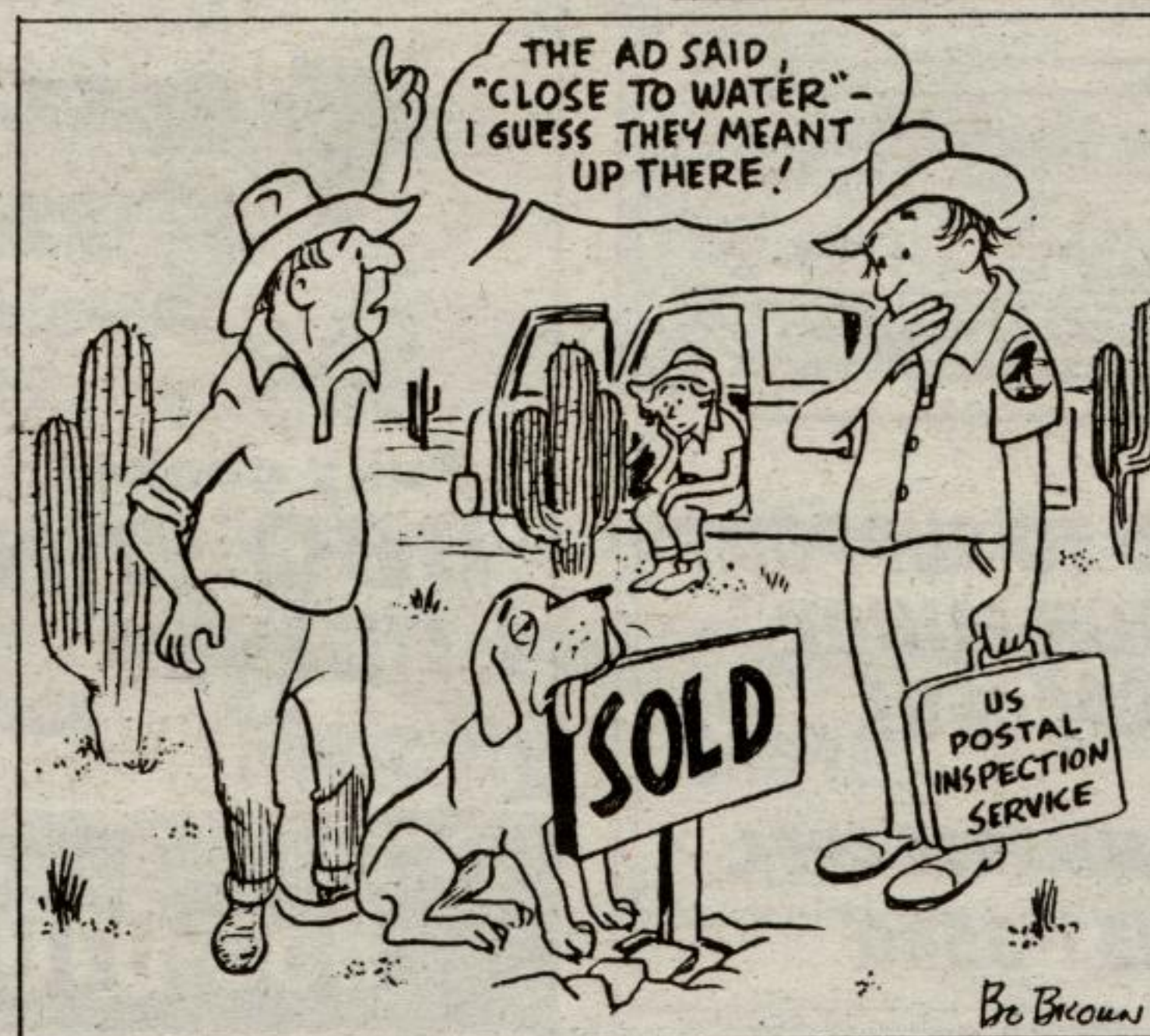
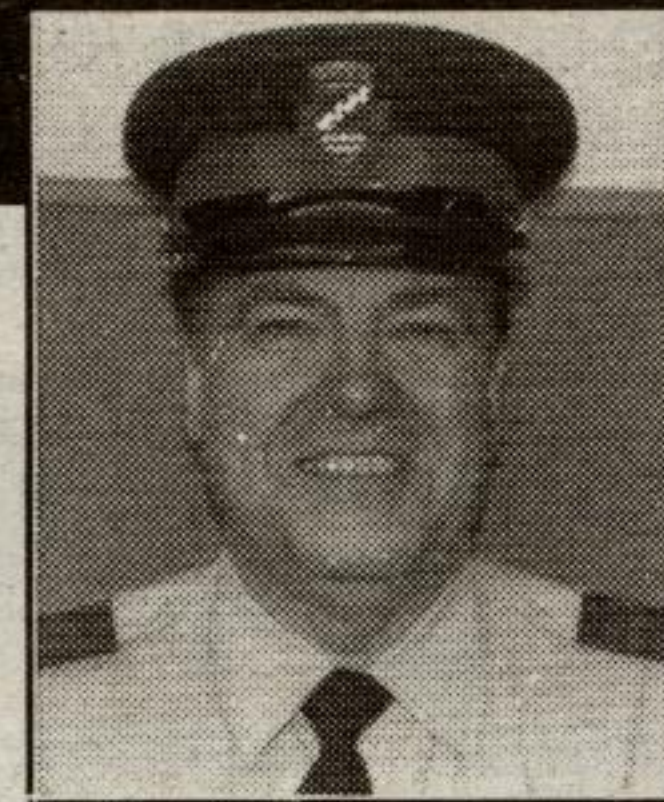


878-1100 OR 877-8974  
MILTON GEORGETOWN



## CONSTABLE RIDDLE'S CORNER

WITH VILLAGE CONSTABLE BILL RIDDLE



Older persons are prime targets for retirement land schemes. Inspect your dream site before buying it. Be certain the deed and title are valid and acceptable. Make inquiries about the accessibility, planned development and zoning of the area, as well as who is responsible for the expenses associated with installation of utilities.

## Dan C. Dolliver

ONTARIO LAND SURVEYOR

Legal & Topographic Surveys

54 Mill St. E.  
Tel. 853-2502  
Fax 853-1504



## SUBWAY

Sandwiches & Salads  
We bake our own bread!

PARTY SUBS & PLATTERS  
for all occasions

"The place where fresh is the taste!"  
10B Main St. N. ★ 853-5531

## Scotiabank

36 Mill St. E.  
Acton

Partners with  
The Community

George Hume, Manager  
853-2420

## BRAIDA & HENRY

Barristers & Solicitors

SERVING ACTON  
SINCE 1955

67 Mill Street East  
853-1160

## ACTON PHARMACY

Sponsored by  
Bill & Staff

MON-WED, 9 TO 7  
THURS-FRI, 9 TO 9  
SAT, 9 TO 6

Downtown Acton  
853-1620



## ICI

HALTON CREDIT UNION

Mon. - Wed. 9am to 5pm  
Thurs. - Fri. 9am to 8pm  
Saturday 9am to 1pm

Harold Postma, Manager  
273 Queen St. E. 853-0911

## Lindsay LEATHER SALES



Wholesale Leather  
for All Your  
Craft & Custom  
Sewing Needs

JIM LINDSAY ♦ 853-3880

## MACKENZIE & CHAPMAN

GENERAL LAW PRACTICE

Serving Acton, Rockwood  
& Surrounding Areas

33 Main Street South  
853-1330

## NELLIS CONSTRUCTION

• EARTH MOVING  
• EXCAVATING

R.R. 1, Acton



853-0960

## TYLER TRANSPORT LTD.

"Service That Satisfies  
Since 1929"

"Transporting Your Children  
Safely Since 1948"

853-1550