

Watch your water: Region imposes usage restrictions

Special to The Tanner PLUS!
Halton Region is continuing efforts to promote more efficient water use. During the summer months water use can increase by over 50%. Most of this water is used for our lawns and gardens. However, by wise water use in the summer, you can waste less water and still maintain a healthy green lawn and garden.

To illustrate the impact of summer use on the water supply system, consider these facts:

1. Average lawn watering for one half-hour a day uses 360 gallons of water.

2. In Halton Hills there are approximately 11,000 homes.

3. If all these homes watered on the same day, over 3.9 million gallons of water would be used.

Excess water demand due to lawn watering can strain the capacity of our water supply and storage systems. Lawns don't need to be watered every day. Watering every 3 to 5 days is sufficient, less often if it rains.

The best time to water is during the coolest part of the day. Watering in the early morning or in the evening after the sun has gone down, will reduce the amount of water lost to evaporation.

As part of a water conservation program, Halton's Public Works Department is promoting a Region-wide reduction in the use of municipal water during the summer, through a program of mandatory lawn watering restrictions.

The lawn watering restrictions involve an "odd/even day" system to reduce peaks in demand. Properties with odd numbered municipal addresses (e.g. 1,3,5, etc.), will be allowed to water lawns only on odd calendar days. Properties with even numbered addresses will be allowed to water the lawns only

on even calendar days.

For townhouse units where the unit number is included in the municipal address (e.g. Unit 101, 2 Main St.), the unit number will apply (i.e., the odd 101, and not the even 2 Main St.).

As in previous years, the program is implemented on a Region-wide basis for all properties serviced by municipal water supply. Private wells and surface water from ponds and streams are excluded from this program.

The water restriction program does not include the following: Car washing; flower, garden and tree watering by hand; water uses via hand held spray nozzles; newly placed sodding during the maintenance period; lawns treated with

herbicide, pesticide, or fertilizer which require water.

The water restriction program does include the following: All residential, commercial and industrial properties; all municipally-owned properties such as schools, parks, arenas, community centres, public works facilities, etc.; golf courses using municipal water.

The program will be enforced by Halton's Public Works staff. Although a fine of \$2,000 may be assessed on violators contravening this provision of Regional Water Use By-law 93-89, the cooperation of all citizens in this important water conservation effort will be the key to its success.

A water conservation program focuses on the sound management

of our water resources.

Water conservation will reduce the amount of water being used by everyone, and therefore reduce the amount of water being treated and pumped. This will minimize the strain on Regional water systems and reduce the cost to residents on

their water and sewer bill.

Talk to your neighbours about the impact of lawn watering on water conservation. Let us all become involved in conservation.

For details, contact Yvonne Teneycke, Plant Operations Division, at 853-0501, ext. 7948.

Victoria Park Golf Club 18-Hole Golf Courses



Victoria Park Golf Club East - Par 71

**"Big Vic's"
Canada Day Weekend
Giant Pro Shop Sidewalk Sale!**
Friday, June 30th to Monday, July 3rd

**All Pro Shop Merchandise
at Giant Sale Prices!**

New & Used Clubs
Mens' & Ladies' 11-piece
sets starting at \$279⁹⁵

Straw Hats \$10 & up

In event of rain sale inside

We have a good selection of mens' & ladies' rights & lefts - steel & graphite

**"Big Vic" East continues its Canada
Day Sale with Green Fee Specials**
July 4, 6, 10, 11 & 13
Play 18 holes for \$1 per hole!

"Big Vic's" Golf Shop: 821-2211



**Dr. Peter Lemiski
Dr. Murray Yull
Family Dentistry**

- Preventative & Cosmetic Dentistry •
- Denture Services • Dental Implants •
- Heat Sterilization •
- Nitrous Oxide Sedation • Overhead TV •

Evening Appointments

New Patients and Emergencies Welcome

Eramosa-Rockwood Medical Centre
166 Guelph Street, Rockwood
(519) 856-4831



Jo'Leen's Distinctive Ladies Fashions



**Summer
Sale!
Starts
July 3**

**We carry: Mary Rose, Tanjay,
Della Spiga & Nu Mode Dresses**

224 Main Street East, Milton

(905) 878-0506



Walt Boduch

Private investment
advice to individuals
and families throughout
Wellington County.

FREE CONSULTATION

Call for information
(519) 856-2617

155 Main Street S., Suite A
Rockwood, ON N0B 2K0

R.J. BEATTY FINANCIAL CORP.

Member of Correspondent Network First Marathon Securities Limited



Gift Baskets Galore

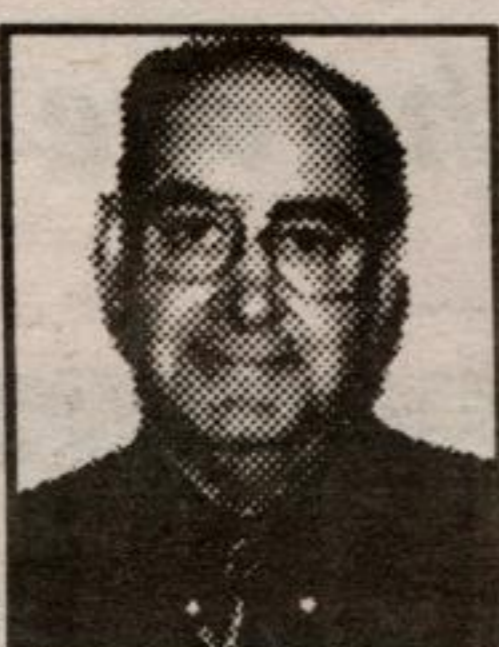
Complete Wedding
& Party Decorating

Specializing in Baby Gift
Baskets & Gourmet Foods

Delivery in Acton Available

190 Main Street East, Milton
(905) 878-1303

ANNOUNCEMENT



James (Jim) Steele

Jim Steele is pleased to announce the opening of **Royal City Carpet & Floor Fashions Ltd.** Jim has worked in Guelph for the past 3 years and invites all his old customers and friends to visit him at his new store.

Located beside Houghton Car Care Clinic at Michener Rd. and Highway #7 - Guelph Auto Mall

TREATING YOU THE WAY WE WOULD LIKE TO BE TREATED

Stop By -
You Will Be Surprised.

HOURS:
Mon-Wed 9 - 5:30
Thurs-Fri. 9 - 8
Sat - 9-4

**ROYAL CITY
CARPET
& FLOOR FASHIONS**

450 Michener Rd.
(corner of Hwy. 7)
822-9002



Strictly Fish



Tropical • Marine
Sales • Service • Leasing

Pond Supplies

**Water hyacinths • Water lettuce
Red, white & yellow lilies
Koi & comets • Snails & clams
Full frozen food line**

Family Owned and Operated

54 Mill Street, Georgetown
(905) 877-3474
Fax (905) 877-0018

Open daily except Mondays