

Buying shop 'like coming home'

BY JOANNE STEVENSON
The Acton Tanner

"We have the parts, the prices and the service," says Jim Ware, the new owner of Acton Auto Parts.

Ware, a licensed mechanic, took over the business on Dec. 1, and after one month, is pleased with business prospects.

Acton Auto Parts was a corporate store previously owned by McKerlie-Millen, and has operated in town for some 20 years.

Ware decided to become his own boss after 14 years as the national sales manager for Munroe Auto Equipment. Before that he ran his own garage in Georgetown for 8½ years.

"I used to travel a lot with my old job," Ware states, adding, "I'm happy to stay put now."

And though he recognizes that there are risks in running his own shop, to Ware, the benefits far outweigh the negatives.

"I'm working toward my own future rather than the company's," a determined Ware challenges.

Ware, 46, lived in Acton until he was 30. Though he now lives in Rockwood with his wife of 22 years and his two sons, ages 21 and 17, he sees this business move as "coming home."

"I'm renewing old acquaintances," Ware says.



HARD AT WORK: Acton Auto Parts's new owner Jim Ware, right, and employee Andrew Kroezen. (Eve Martin photo)

In addition to acquiring a new owner, the shop has moved across the road to 262 Main St. N. The new facility offers a clean, bright location that patrons will find inviting.

And it still offers a wide selection of parts for foreign and domestic cars, trucks and transports.

"If we don't have it, we can get it," declares a confident Ware.

"Most of our trade is with local garages and mechanics, but we do a fair bit of walk-in business too."

Though there are auto parts shops in Georgetown, Milton and Guelph, Acton Auto Parts is "the only game in town," as Ware likes to say.

He also recognizes a change in clientele over the years.

"More women today are involved in decision-making with their cars than in the past. They like our clean, organized facility, staffed by competent people."

In fact, the Acton native kept the original staff when he purchased the business: two full time employees, two part-timers, and himself.

Ware reports that business has been "excellent" since he took over.

Acton Auto Parts is open from 8 am to 5 pm Monday to Friday, and from 8:30 am to 1 pm on Saturday.

Enter your photos!

Calling all Acton photographers: It's time for PhotoArt '95!

A juried exhibition of photo art, presented by the Halton Hills Camera Club, will run in the Gallery of the community Cultural Centre from March 1 to March 25 - and you can enter your own photos.

Each participant can enter up

to three photos in each of three categories: People & Animals; Scenery, Foliage & Flowers; and Objects and Abstract.

The jury consists of three professional photographers and there will be awards for black-and-white and colour prints.

For details call Jim Warrington at 853-3707.

Gravel pits targeted

BY FRANCES NIBLOCK
The Acton Tanner

Halton Hills will appeal the tax assessments of 18 gravel pits, most of them in rural Acton, and two registered plans of subdivisions. Town staff feel they are not paying their fair share of taxes.

Town Treasurer Andy Koopmans told Council he did not know how much lost assessment might be involved, but the amount would cover the \$5,000 fee for a tax consultant to represent the Town at any assessment review board hearings. Koopmans was asking Council for authorization.

"A study found that these gravel pits were under-assessed relative to the size of the sites and the amount of area that was being worked," Koopmans explained to Council last Monday.

Koopmans said the report was forwarded to the assessment department for action, but so far, nothing has been done. He feels it is unlikely the properties will be looked at this year because of other priorities, resulting in the possible loss of increased assessment for another year.

Koopmans explained when property assessments are appealed, legislation requires they be dealt with during the current year.

"In addition, there are two registered plans of subdivisions, which the consultant feels are not paying their fair share of the tax burden," Koopmans said.

"Given that we would pay in the neighbourhood of \$50 a lot to be put on the assessment roll, that would mean that one property with 40 lots would cost us \$2,000 to go through supplementary assessments. To appeal would cost \$40."

Dan C. Dolliver

ONTARIO LAND SURVEYOR

Legal & Topographic Surveys

54 Mill St. E.
Tel. 853-2502
Fax 853-1504



SUBWAY

Sandwiches & Salads
We bake our own bread!

PARTY SUBS & PLATTERS
for all occasions

"The place where fresh is the taste!"
10B Main St. N. ★ 853-5531

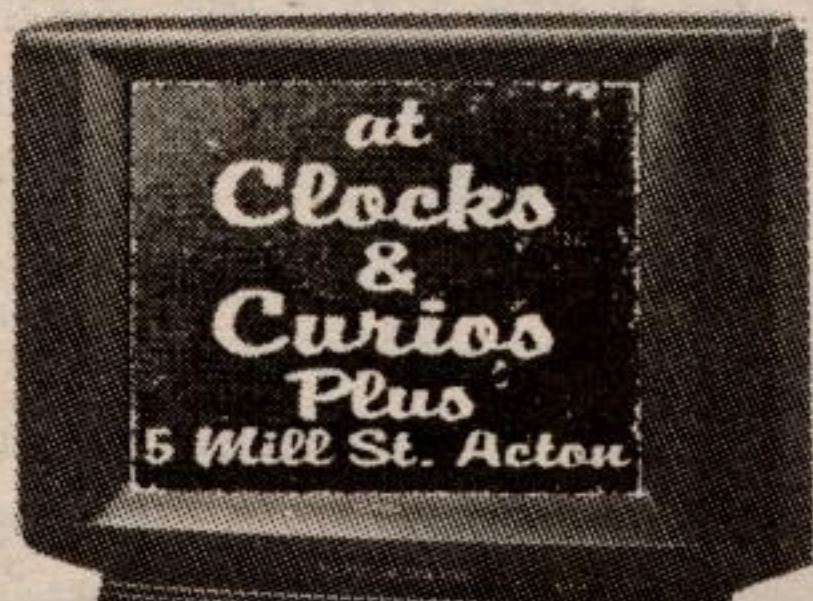
Scotiabank

36 Mill St. E.
Acton

Partners with
The Community

George Hume, Manager
853-2420

TOSHIBA



853-5062

CONSTABLE RIDDLE'S CORNER

WITH VILLAGE CONSTABLE
BILL RIDDLE



Beware of Telephone Soliciting

The Acton area is presently being solicited over the phone, by companies based in Montreal, advising that the person called has won prizes. Examples might include a new car, grocery certificates, \$3,000, Kodak cameras and film packages.

All that is required is that you send a certified cheque to the company, to cover their expenses.

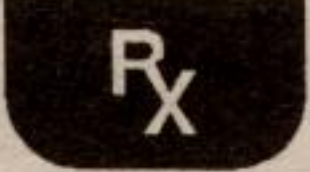
Do not send them any money! There are several different companies using this method to separate you from your money.

If you receive such a call, please contact the anti-racket squad Phonebusters, at 1-705-495-8501.

ACTON PHARMACY

Sponsored by
Bill & Staff

MON-WED, 9 TO 7
THURS-FRI, 9 TO 9
SAT, 9 TO 6



Downtown Acton
853-1620

ICI

HALTON CREDIT UNION

Mon. - Wed. 9am to 5pm
Thurs. - Fri. 9am to 8pm
Saturday 9am to 1pm

Harold Postma, Manager

273 Queen St. E. 853-0911

Home hardware

Serving Acton's
Hardware Needs
For 25 Years

Mon.-Wed. 8 to 8 • Thurs.-Fri. 8 to 9
Sat. 8 to 6 • Sun. 11 to 4

43 Mill St. E. 853-1730

MACKENZIE & CHAPMAN

GENERAL LAW PRACTICE

Serving Acton, Rockwood
& Surrounding Areas

33 Main Street South
853-1330

NELLIS CONSTRUCTION

• EARTH MOVING
• EXCAVATING

R.R. 1, Acton



853-0960

TYLER TRANSPORT LTD.

"Service That Satisfies
Since 1929"

"Transporting Your Children
Safely Since 1948"

853-1550