

FREE
PARKING

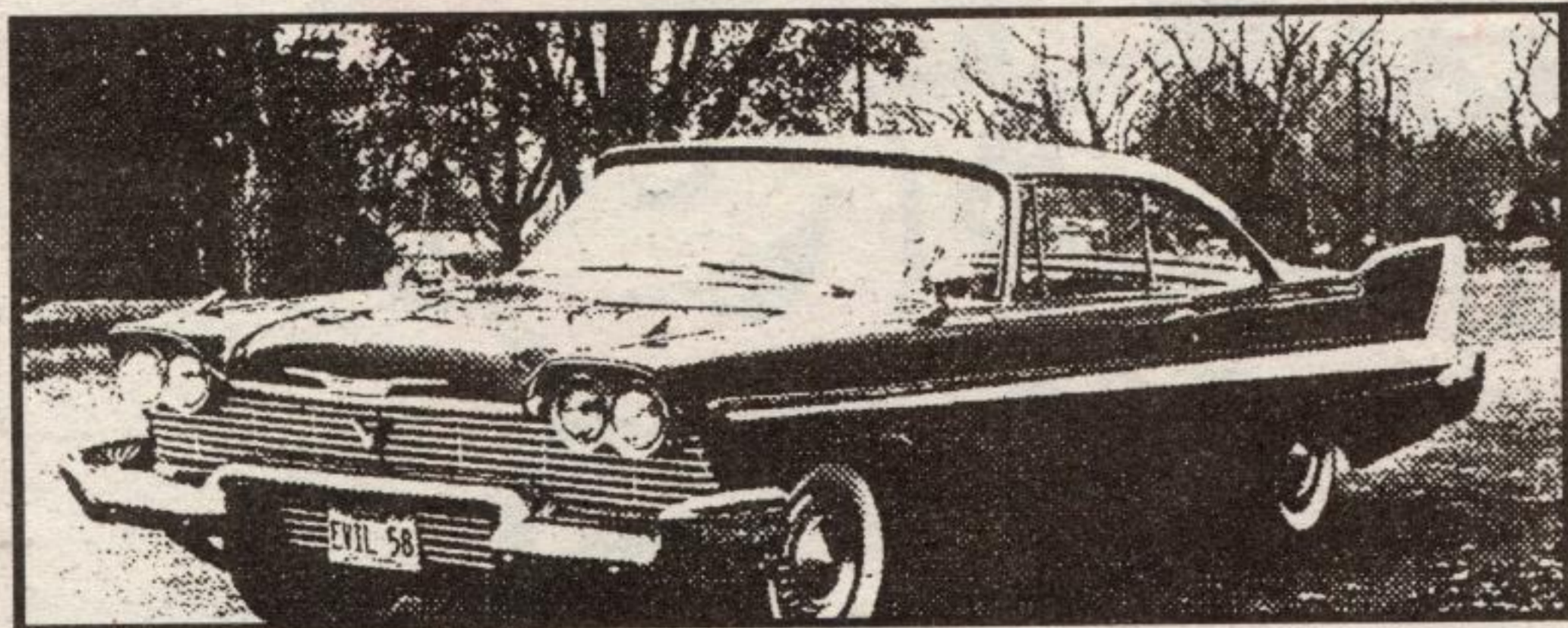
OPEN
SUNDAYS

GEORGETOWN MARKETPLACE

ENCLOSED COMFORT WITH 60 SHOPS & SERVICES TO PLEASE YOU

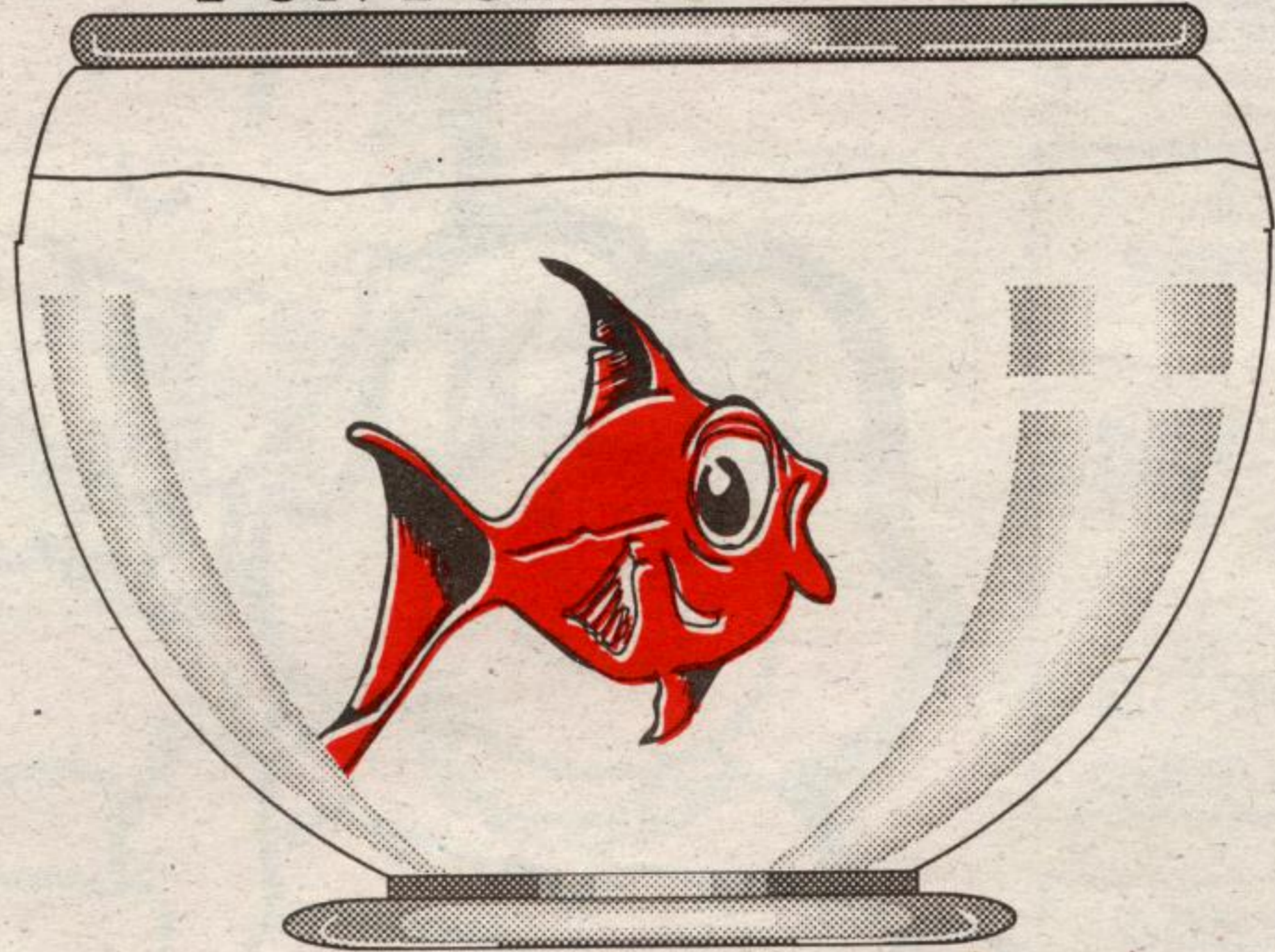
COME AND SEE

Christine



An exact replica of the 1958 Plymouth Fury from the blockbuster movie from the Stephen King novel of the same name! This red and white mean machine is a favourite with the public, attracting crowds wherever it's parked

FUN FOR EVERYONE



GOLDFISH RACES

An exciting and interactive game in which contestants race live goldfish to the finish line with prizes and goldfish going to all competitors. Lots of fun for participants and observers alike.



Charley FitzWhiskey's TAP & EATERY

Open Daily 11am - 1am
Take Out Available - We Cater Large Parties
BACK TO SCHOOL SPECIALS
SEPT. 1 THRU SEPT. 11, 1994

Charley's got great things happening to ease your way Back to School. Bring the KIDS in for lunch or dinner-order a Kid's Meal, fill out the ballot and your kids are eligible to win one of many prizes including a NINTENDO GAME BOY!

Charley's KID'S MENU available to those 12 & under. \$4.95 includes beverage, entree and dessert AND A SPECIAL BACK TO SCHOOL TREAT BAG!

Pssst... we also have a brand new menu which features subtle changes to all of your favourites plus lots of all new items!



2ND ANNIVERSARY CELEBRATION

SCHEDULE OF EVENTS

- Sept. 7 **Replica of Classic Car Christine on Display**
(10:00 am - 9:00 pm)
Goldfish Races
(4:00 pm - 5:30 pm)
- Sept. 8 **Lance Lindsay & the Route 66 Revue**
(4:30 pm & 7:30 pm)
- Sept. 9 **A Tribute to Elvis**
(4:30 pm & 7:30 pm)
- Sept. 10 & 11 **Mr. Short Stroke - Painting for a Pittance**
(Painting Lessons) (1:00 pm & 3:00 pm)

Real Savings

Real Bell Real Plus

Visit our New Bell Phone Centre



D•E•L•R•E•X

Variety



NOW!

Canon Colour Photocopies

Reproduce or Enlarge Your Photographs

only

\$1.50 for 8½" x 11"

Fax. Service Available

CANON

CANON

MALL HOURS: MONDAY TO FRIDAY 10AM TO 9PM • SAT. 9:30AM TO 6PM • SUN. NOON TO 5PM