

Ag Society honours

The Acton Agricultural Society honoured members of the Board and community with the following awards, presented at the annual picnic at Scotsdale Farm on Sunday, June 5.

Acton Agricultural Society Service Diploma was presented to member Keith Aitken, in recognition of his long association with the Fair, for his prestigious first prize winning at the 1993 Royal Winter Fair for his pedigree oats (this represents a worldwide competition) and for his continuing contribution to agriculture in the community.

Life Membership Pin and Certificate was presented to director Russ Murray for his active participation in the Fair for over 30 years. He was president in 1976-77 and has served on numerous committees, presently on the Tractor Pull.

A Homecraft Division special award was presented to Linda Cairns, who has been a valuable schoolwork judge for 25 years.

"We are very pleased to recognize these volunteers for their valuable contributions," commented Janis Fread, president.

Legion golfers advance to 'Districts'

LEGION NEWS

BY JOYCE BUCHANAN
Special to The Tanner

Wednesday bridge winners were: Grant Allan, Len Lovell and May Chase.

Thursday's euchre winners were Neil Frawley, first; Vi Colyer, second; Mary MacKinlay, third; Dick Clement, fourth and hidden score Glad Ingles.

Meat Draw Early Birds were Joyce Buchanan and Charlie Allen. Regular draw the winners were: Bill Taylor (2), Ray Gordon (2), Al Robinson (2), Allan Ellerby, Sylvia Nevile, Ed Molody, Cynthia Hillier, Jim Hillier, Bev Mattocks and the large draw was

won by Neil Fulford.

Flags were lowered to half mast a week ago Monday not only for the D-Day Vets but also for one of our members, Gus Goutouski, also a D-Day Vet.

Sunday, June 5 at 9 am found quite a few Legion Members tending Veteran's graves and planting geraniums. This year a Poppy plaque was placed on the head stones to denote a veteran. The planting of geraniums is a tribute paid every year since 1954.

Congratulations to the 20 golfers who started out at 8 am Saturday for Richview Golf and Country Club. The trip was not in vain as the team of 55-year-olds-and-over were the winners. Ken Jones,

Jules Russiani, Mac McKenzie and Kevin Conroy made up this team. Our other members were Rod Leech, Dugald Dick, Dave Thompson and Hugh Forbes, who also qualified.

The winners will go on to District July 23 in Caledonia. Carl Fisker would like to thank all 20 golfers who participated. The trophy will soon be on display in the Branch and Acton will be the host for the 1994-1995 tournament.

There are a few tickets still available for the Beef BBQ. They will be on sale at the Branch til June 16.

See you at the Branch and don't forget if your telephone number or address has changed let me know so you remain on the mailing list.

Students visit M-S

M.Z. BENNETT NEWS

BY NATHAN WILLIAMSON & ADAM CANARY

Mr. Shrubsole's class is going to the Fire Station. They made fire hats to wear. They are going to learn about bike safety too.

Mrs. Mattell's and Ms. Dunnet's classes are working on researching insects. They are starting a unit on poetry. In math they are starting multiplication.

Miss Lawson's class, Mrs. Spencer's class and Mrs. Bannerman's class all visited the Prospect Park Water Treatment Plant and the Waste Water Treatment Plant on Churchill Road during their unit study about water. They presented and explained their water experiments to their parents and their fellow students during their Science Fair About Water.

Mrs. Spencer's class is busy making Magic Mirror books and they are finding that with a mirror you can make all kinds of neat pictures appear.

Mr. Waitson and his class are looking at the Water Cycle. They are working on a novel study and have been busy getting ready for our Track and Field Day.

Mrs. Graham's class is still working hard on their Paired Novel Study. They are doing individual projects. Adam Canary and Josh Break, students of Mrs. Graham, won the Principal's Award for outstanding effort.

Our Grade 5 students met with the Grade 5s from Robert Little at McKenzie-Smith. They had a tour of the middle school, to become familiar before September.

Mr. Logan, our new principal, and Mrs. Clark, our new V.P., had interviews with all the teachers at M.Z. Bennett last week.

HALTON HILLS

ELECTRICAL CONTRACTING
• RESIDENTIAL • COMMERCIAL
• INDUSTRIAL • RURAL
POLE LINE WORK
24-HOUR SERVICE
NEWWORK • REWIRING
ELECTRIC HEATING
INSTALLATION & MAINTENANCE
Call 853-2572
73 NELSON CRT.
PROP. — LYLE PRUETER

CHATELAINE LIGHTING

SERVING GUELPH & AREA SINCE 1969
REPAIRS TO LIGHTING FIXTURES
COMPLETE LINE OF NUTONE
EXHAUST FANS & DOOR CHIMES
OPEN 6 DAYS A WEEK
GUELPH, 519 824-0401
52-56 VICTORIA RD. S. (AT ELIZABETH)

For All Your Business & Home Rental Needs:

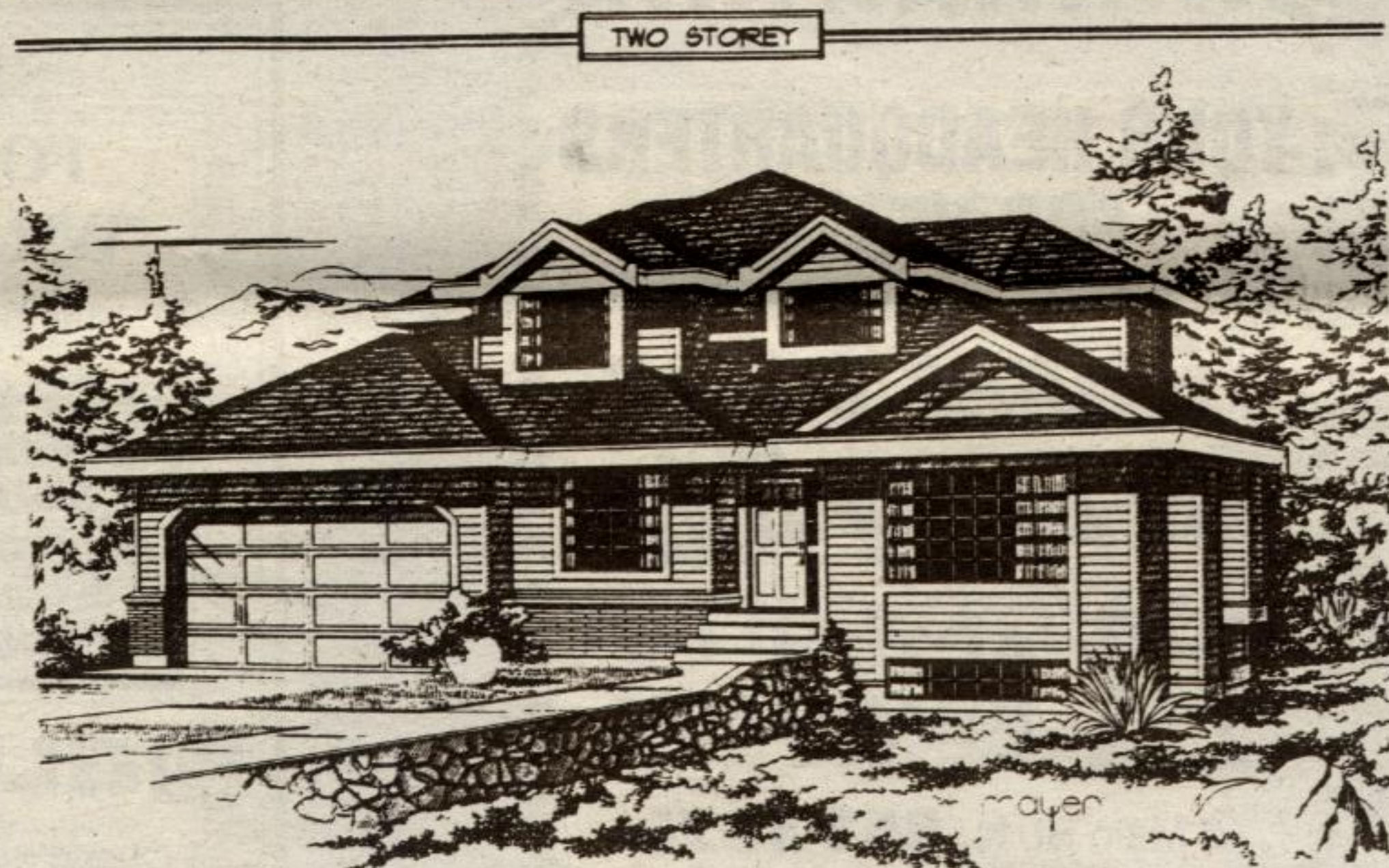
KC RENTALS

RENTALS • SALES • SERVICE
Rockwood
856-9571

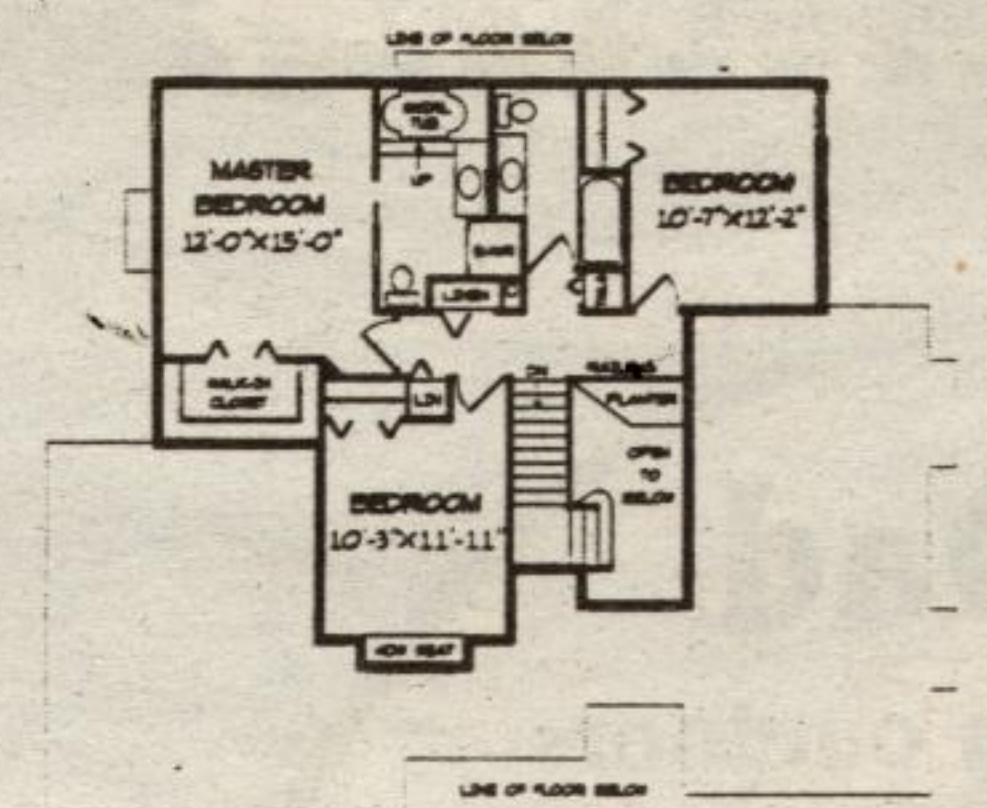
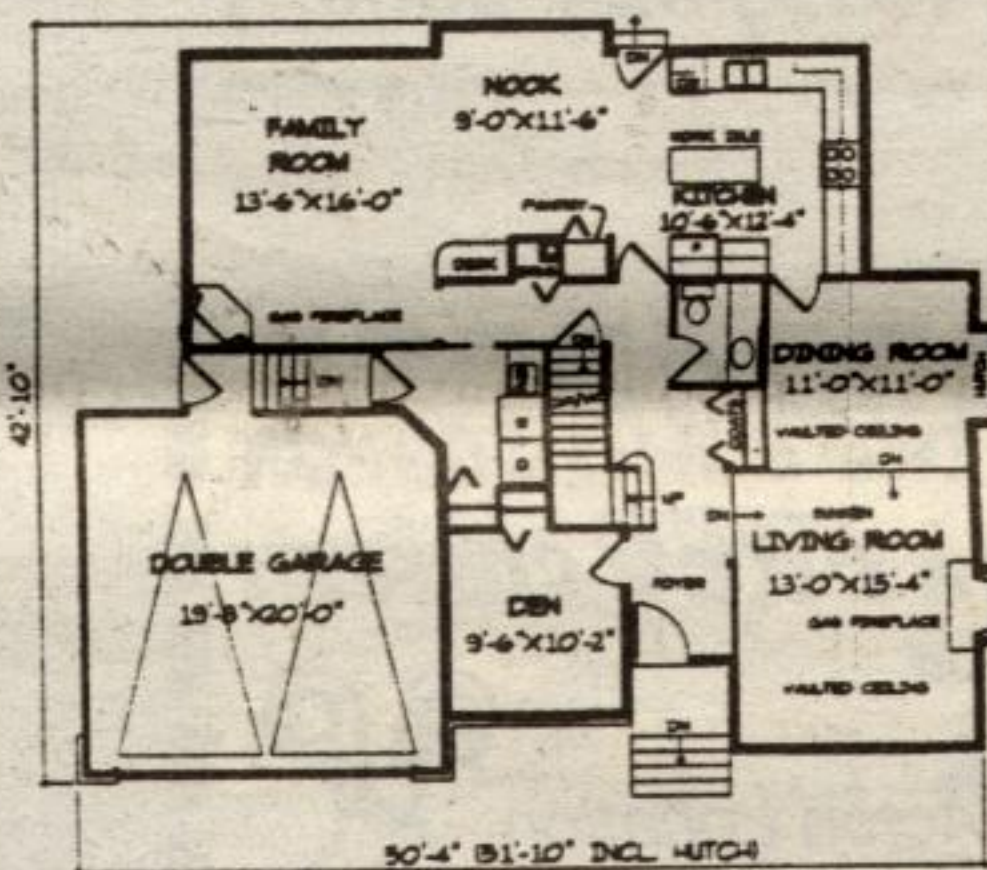
B & K WINDOWS

& Aluminum Products
EXPERTS IN THE SALE & INSTALLATION OF:
■ ALUMINUM & VINYL WINDOWS
■ PATIO DOORS & SHUTTERS
■ STORM WINDOWS & DOORS
■ PORCH ENCLOSURES
■ SOLARIUMS
■ THERMAL REPLACEMENT
■ DOUBLE OR TRIPLE GLAZED
■ FASCIA, SOFFIT, EAVESTROUGH, SIDING
FOR A FREE ESTIMATE, CALL TODAY: 877-3769

HOMEPLAN OF THE WEEK!



Plan No. U-864
2160 SQ.FT.



Stylish two-storey suits sloping lot!

Not all building lots are created equal. Some have everything we need - almost - and require a special design which blends in with the natural surroundings.

The main floor has been raised in this design, and a partially exposed basement added to accommodate a sloping lot.

A den, just inside the front entrance and apart from the main traffic areas would make an ideal home office. Look over a railing into a fashionable sunken living room which features a vaulted ceiling, which extends through the dining room, and a gas fireplace. A french door leads into a gourmet kitchen complete with ample cupboard and counter space, a pantry, and a handy work island. An open plan design for the kitchen, nook, and family room creates a spacious and comfortable atmosphere for informal gatherings.

Upstairs, the master bedroom, like those in larger homes, features a walk-in closet and a four piece

ensuite with a raised soaker tub.

An unfinished basement awaits your own creative touch.

An unfinished basement awaits your own creative touch.

Plans for U-864 may be obtained for \$425 for a package of five complete sets of working prints and \$39 for each additional set of the same plan. Allow \$15 extra to cover the cost of postage and handling (all Canadian residents add 7 per cent GST to plan total plus postage and handling.)

This is one of our new designs. Many innovative plans are now available in our new 30th edition plan catalogue for \$13.85 including postage and handling and 7 per cent GST.

Make cheques, money orders and Visa or MasterCard authorizations payable to The Acton Tanner Home of the Week, P.O. Box 150, Acton, Ont. L7J 1G8.

NH Material Handling

- Sales & service
- Residential garage doors & openers
- Commercial overhead doors
- Dock levellers & Lift trucks
- 24 hour service
- Seniors' discounts

FREE ESTIMATES

853-2550

ALL WORK GUARANTEED

ABR

ROOFING & ALUMINUM

Specializing in Re-Roofing
Siding • Eavestrouthing
New Roofs • Repairs
Soffit • Fascia

ANDREW B. RAMSDEN

Free Estimates 853-1452

VINYL OR ALUMINUM

Siding • Soffit • Fascia
5" Seamless Eavestrouthing

SALES • INSTALLATION • SERVICE

Do it the Right Way...

Rite-Way Aluminum

Serving Guelph & Area since 1980

Free Estimates • Fully Insured
Ask About Our Warranties

20 Taggart St., Unit 5, Guelph

821-9330

Leathertown LUMBER

LUMBER, PANNELLING & PLYWOOD
PLUMBING, ELECTRICAL
HARDWARE, HAND-TOOLS
PAINTS, STAINS, WINDOWS, TILES
DOORS, TRIM & SIDING

"Everything you need to do the job right."

Leathertown Lumber Inc.
Main St. North • 853-1970



DENNY'S INSURANCE

50 YEARS EXPERIENCE

Serving All Your Insurance Needs

Home • Auto • Business • Travel
Life • Mortgage Ins. • Group • RRSP

853-0150

15 Mill Street West

Your Insurance Broker Understands