

Some historical notes on the communities that make Eramosa so special

BY FRANCES NIBLOCK
The Rockwood Miller

One of the first communities to be settled in Eramosa was Rockwood.

John Harris received 230 acres of Crown Land in 1818 and built a shanty on the land that is now Rockwood.

When this burned down Harris left the area, but returned in 1829 and laid out the village.

In 1823 Henry Strange purchased 1500 acres, which included most of the area of Rockwood, and gave the land to his son, Colonel Henry Strange.

Strange and Harris agreed the boundary between their lands would be the south branch of the Eramosa River.

John Harris and his wife established the Society of Friends and called the new settlement Brotherstown.

Strange built a grist mill on

the river in 1843 and for a time Rockwood was known as Strange's Mills.

Then in 1849 the Rockwood Academy was founded by William Wetherald and he gave the village the name Rockwood.

In 1903 Rockwood became a Police Village.

EDEN MILLS

Eden Mills is a village that straddles the Counties of Wellington and Halton.

Eden Mills was founded by the David Kribbs family in 1842 and was first known as Kribb's Mills, and also Cripp's Mills.

Aaron and Daniel Kribbs built a saw mill and grist mill on the lower branch of the Speed or Grand River.

Eden Mills received a boost when the Toronto Suburban Electric Railway to Guelph was opened about 1919.

The railway was taken-over by Canadian National Railways but stopped running in the 1930s.

Eden Mills became a Police Village in 1930.

EVERTON

Lovell's 1871 "Directory" describes Everton as "a thriving village on a branch of the Grand River. It contains flouring and saw mills, a stave factory, tannery and potach works."

Everton was first called "Hungry Hollow" and the village was laid out in 1858. The upper part of the village was called Stewart town and the lower half Everton.

The village continued to grow, having three churches, two hotels, three blacksmiths and various stores until the Grand Trunk railway bypassed the village and built its depot in Rockwood.

Travel back to 1784

BY FRANCES NIBLOCK
The Rockwood Miller

The Township of Eramosa was established in 1784 when Mississauga Indians surrendered a large area of land to the government.

The territory had been captured from the French in 1759 and was made part of Quebec in 1774. In 1792 it was called the District of Hesse and in 1790, Upper Canada.

By 1792, the area that is now Eramosa had become part of the West Riding of the County of York, Western District.

In 1816 that area was included in the County of Halton, District of Gore and was part of the Clergy or government reserves.

A large block of land, including what is now Eramosa, was surrendered to the government in 1818, and the following year the name Eramosa was first used.

It was at this time that the first settlers came to Eramosa. Most were immigrants from the British Isles and they quickly built mills, schools and churches.

Eramosa is a small Township — just 12 miles long and six across. Early settlers found that

Eramosa was "well-watered" with two branches of the Speed River running through it. On the southern branch of the Speed, known as the Grand River, there were saw and grist, flour and woolen mills.

By 1838 the District of Wellington was established and representatives of Eramosa, Erin, Garafraxa, Waterloo, Wilmot, Guelph, Nichol and Woolwich were in attendance.

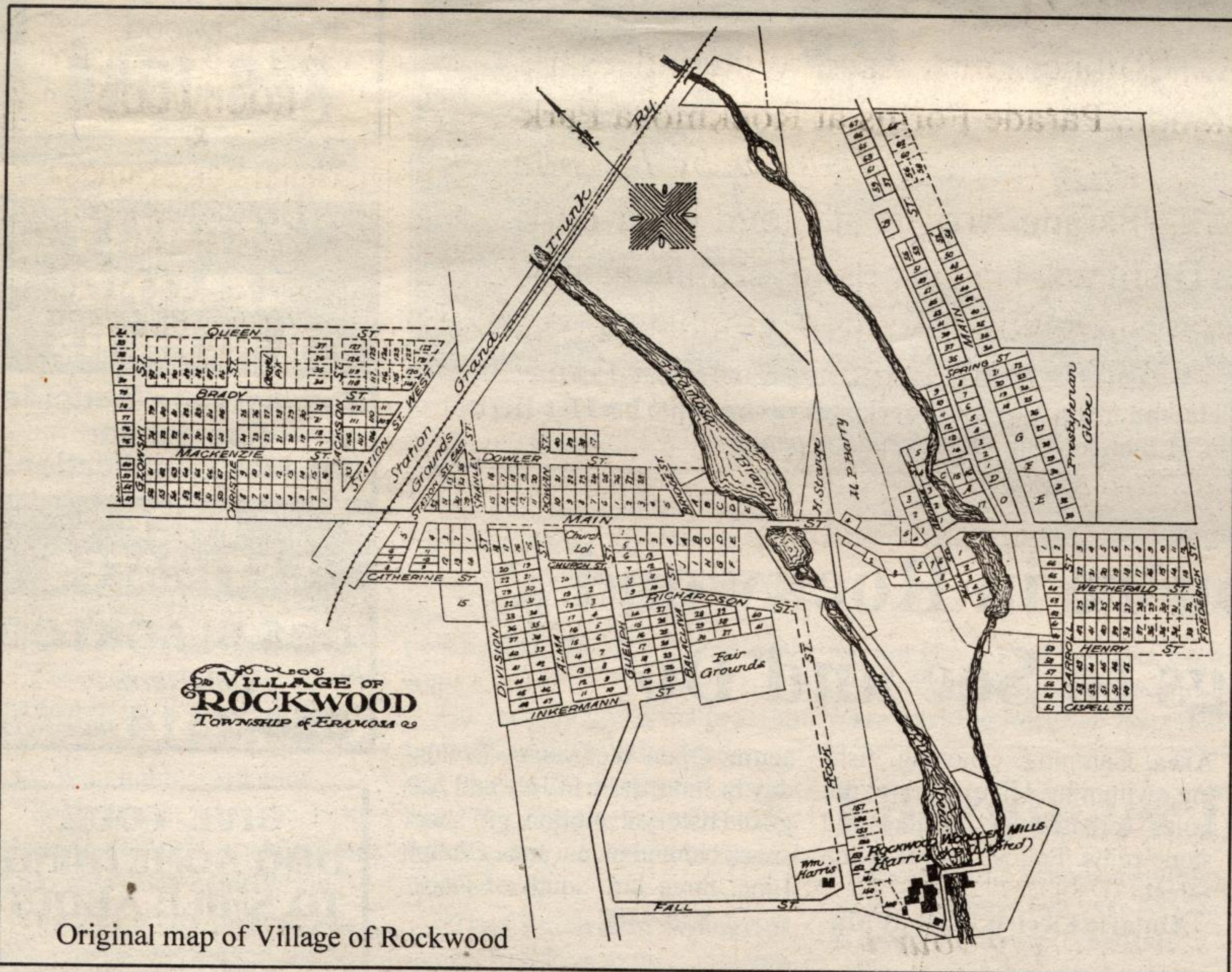
The first Council for Eramosa met in Worsfold's Tavern in 1850.

**Escarpment
Sound
Studio**

**Congratulates
Rockwood
145 years young**

For all your recording needs

call **856-1297**
RR 3 Acton, L7J 2L9



Original map of Village of Rockwood

SHAGS TO RICHES

Hair cutting for the whole family



SPECIALS FOR THE MONTH OF JUNE

- Perms \$45
- Colours \$40
- Highlights \$40

Call for an appointment today!

161 Main St. S.
Rockwood

856-HAIR (4247)



HOG HILL ENTERPRISES

Sweatshirts, T-Shirts
Unique cards, Mugs
Gifts, Toys, Nightshirts

for almost 100's of years

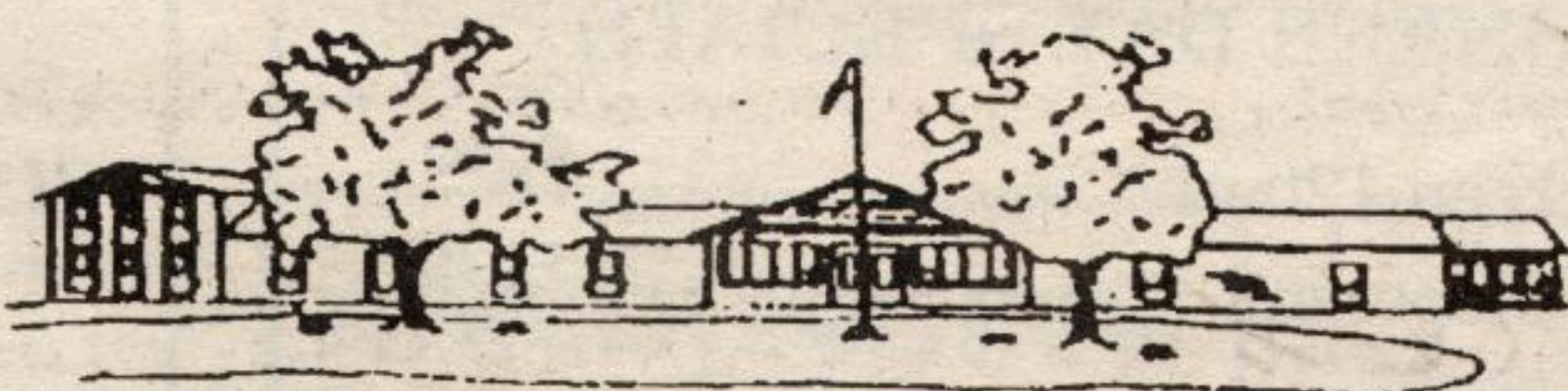
856-2220

132 Main St. S., Rockwood
Open 7 days a week

EDEN HOUSE CARE FACILITY Inc.

R.R. #2 GUELPH 856-4622

"A Nice Place To Live"



NURSING HOME

Our modern facility is available to provide high quality nursing care with all the latest technology requirements.

"Celebrating 25 years of Excellent Health Care in 1994"

Licensed by Ont. Ministry of Health - Accredited by C.C.H.A. - 24 hour professional nursing care - One-storey building

RETIREMENT HOME

Our comfortable country home will continue the tradition of high quality care.
R.R. #2 Guelph 856-4622

Serving Rockwood & Acton Area Since 1968