

Spring workshops will improve your health

Acton Social Services and Info Centre is offering a series of spring health workshops at the Acton Parent Child Centre. The two remaining classes are:

- Tuesday, May 17: Breast Health and What You Should Be Doing About It;
- Tuesday, May 24: Car Seat Safety Information for Infants and Children.

Each workshop will cost members \$3 and non-members \$4, which includes child care for up to three children.

As a "volume discount," participants with more than three children can pay the small fee of \$1 per extra child.

To register for either of the Spring Health Workshops, call the Acton Parent Child Resource Centre at 853-2574 during hours of operation.

The Centre is open Monday and Friday 9:30 to 11:30 am and 1 to 3 pm; and Wednesdays from 10:30 to 2:30 pm.

For details, readers can call ASSIC at 853-3310.



CARNATIONS FOR SALE!

Nancy Little, right, sells a fresh-cut carnation to young Carolyn Glatt Friday in front of Acton IGA as volunteer Louise Marren looks on. Nancy was one of 12 Preceptor Delta Kappa sorority members who helped raise over \$1,200 on the weekend for Multiple Sclerosis services and research. All flowers were sold out again this year! (Doug Harrison photo)

Branch greets new members

LEGION NEWS

There were two tables of bridge on Wednesday and 15½ tables of euchre on Thursday with Lil Cook, Colin Baker and Lil Howson winning at the bridge tables. Euchre winners were Dorothy Jordan, Bill Anderson, Claire Smith, Dorothy Presniak, Cassie Oldfield, Bev Ella, Olive Ellerby, Vern Ella, Mel Storey, Pearl Baker and Eileen Hutcheson.

There were 20 people initiated on Friday night and a fair crowd of members and friends came out to see them join the Legion. We now have another 20 members available, and hopefully willing to volunteer with Legion functions.

We would like some new volunteers to handle the meat draw — it doesn't seem fair to expect the same couples to be rotated all the time. Some of you lucky winners and newly initiated members might enjoy selling tickets some Saturday. 'Nough said.

Winners at the Saturday draw were George Marshall, Al Gordon (2), Mary Underhill, Ed Molody, Terry Winters, Mearl Dear, George McPhail, Marg Dunn, Steve Townsley, John Robson, Lucy Synott, Jim Milne, "Shorty," and Larry Frizzell ran off with the big prize.

Coming Events: Bridge, euchre and the meat draw on Wednesday, Thursday and Saturday afternoons. Hopefully you came out to the general meeting and helped elect your new executive. Their names will be posted in the Branch.

Special Notice: Due to unforeseen circumstances a function scheduled for June 25 has been cancelled. If you have been scrambling for a nice location for that special June function, get in touch with Frank Koen at once.

HALTON HILLS

ELECTRICAL CONTRACTING
 • RESIDENTIAL • COMMERCIAL
 • INDUSTRIAL • RURAL
 POLE LINE WORK
24-HOUR SERVICE
 NEWWORK • REWIRING
 ELECTRIC HEATING
 INSTALLATION & MAINTENANCE
 Call **853-2572**
 73 NELSON CRT.
 PROP. — LYLE PRUETER

CHATELAINE LIGHTING

SERVING GUELPH & AREA SINCE 1969
 REPAIRS TO LIGHTING FIXTURES
 COMPLETE LINE OF NUTONE
 EXHAUST FANS & DOOR CHIMES
 OPEN 6 DAYS A WEEK
 GUELPH, 519 **824-0401**
 52-56 VICTORIA RD. S. (AT ELIZABETH)

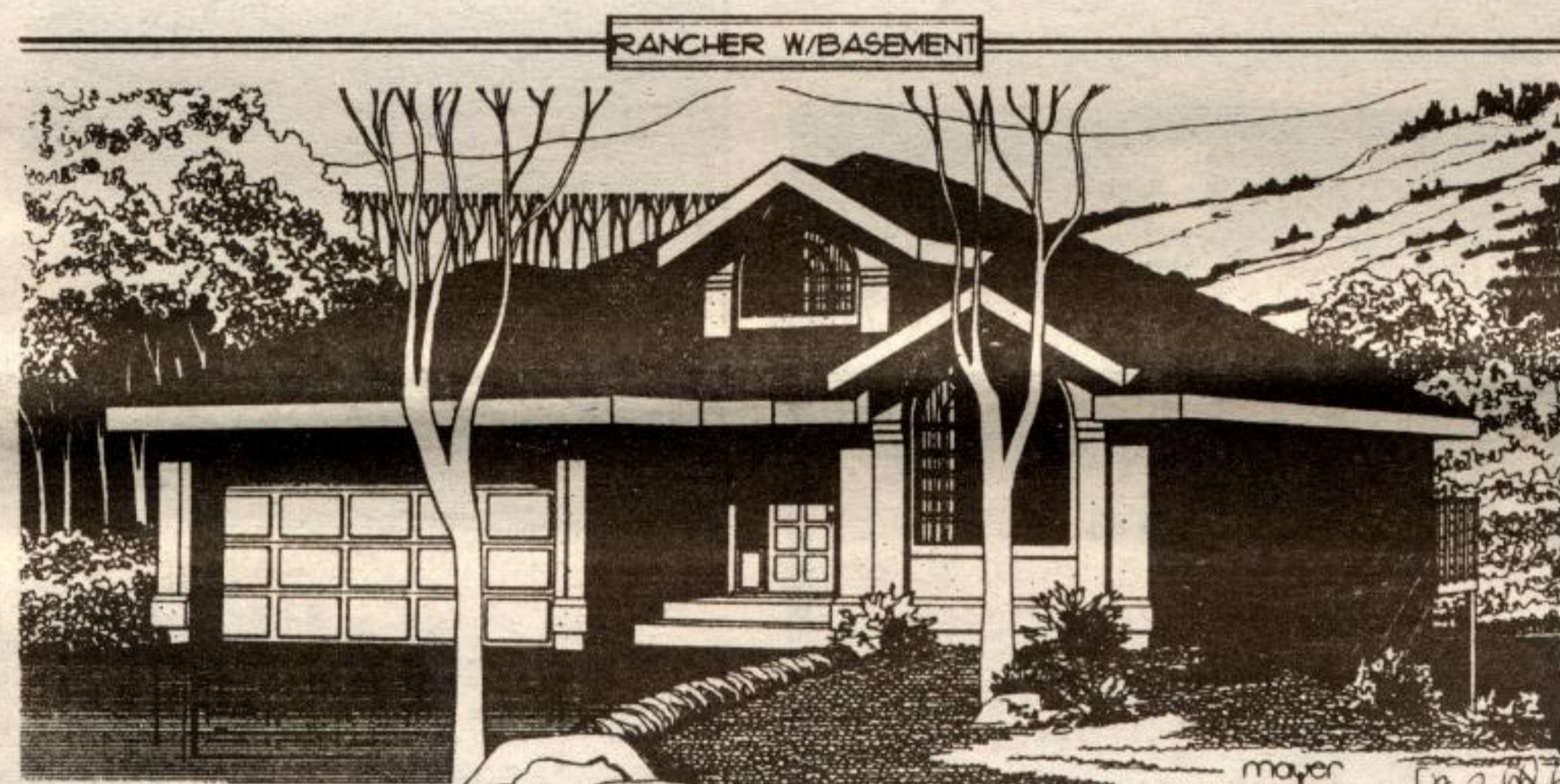
For All Your Business & Home Rental Needs:

KC RENTALS
 RENTALS • SALES • SERVICE
 Rockwood
856-9571

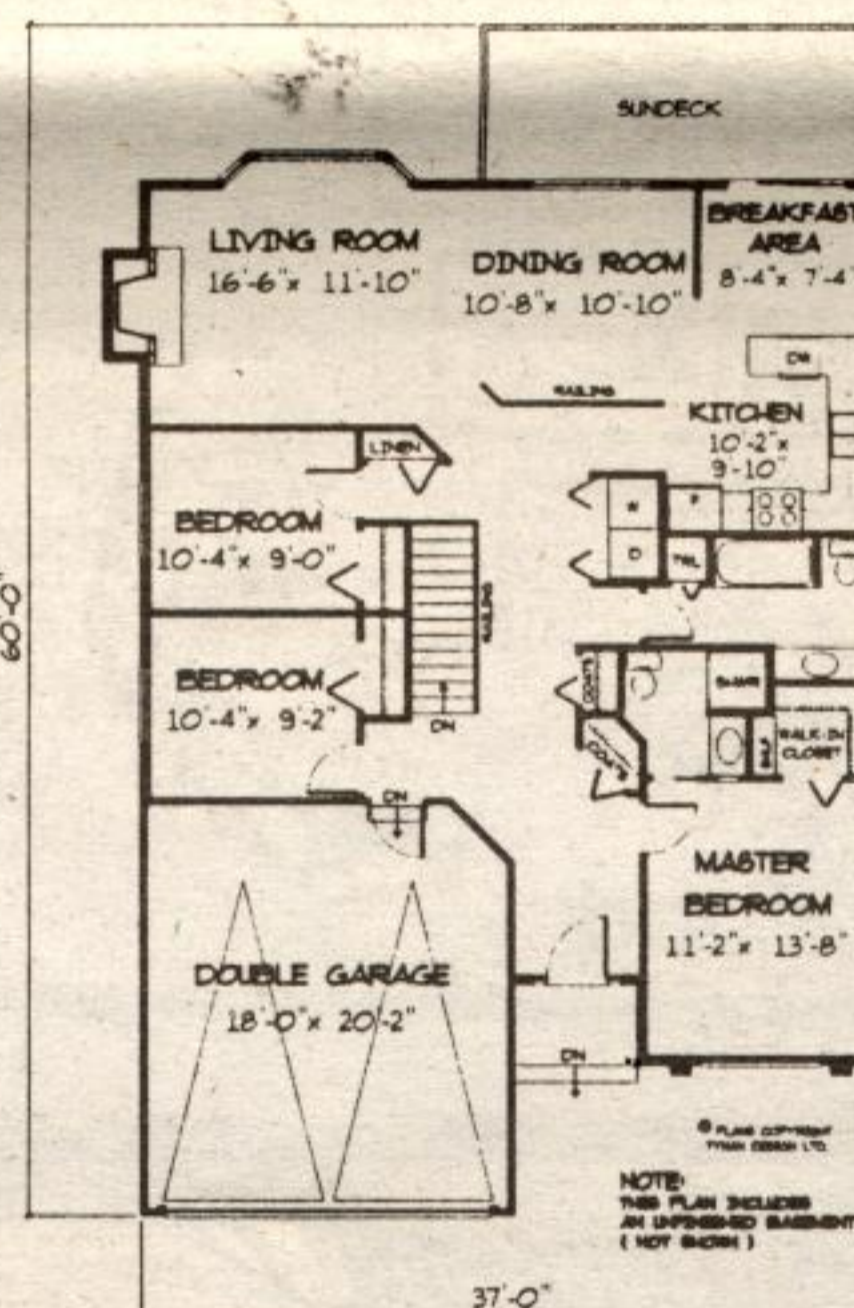
B & K WINDOWS

EXPERTS IN THE SALE & INSTALLATION OF:
 ■ ALUMINUM & VINYL WINDOWS
 ■ PATIO DOORS & SHUTTERS
 ■ STORM WINDOWS & DOORS
 ■ PORCH ENCLOSURES
 ■ SOLARIUMS
 ■ THERMAL REPLACEMENT
 ■ DOUBLE OR TRIPLE GLAZED
 ■ FASCIA, SOFFIT, EAVESTROUGH, SIDING
 FOR A FREE ESTIMATE, CALL TODAY: **877-3769**

HOMEPLAN OF THE WEEK!



Plan No. RV-575
 1396 SQ.FT.



MAIN FLOOR PLAN 1396 SQ. FT.

Stylish starter home

Low square footage and an efficient floor layout make this basement home a smart choice for first time home owners.

A fashionable stucco exterior featuring gables and palladian windows is sure to be a welcome addition to the streetscape.

The foyer is two-storeys high and brightened by an overhead window. The master bedroom, like those in larger homes, features a walk-in closet and a three piece ensuite. An open plan for the living and dining room creates a spacious atmosphere for entertaining and features a cosy fireplace and a bay window. The kitchen provides an efficient working layout. An open counter acts as a handy pass-through to the breakfast area.

An unfinished basement can be completed when

time and finances allow.

Plans for RV-575 may be obtained for \$335 for a package of five complete sets of working prints and \$29 for each additional set of the same plan. Allow \$15 extra to cover the cost of postage and handling (B.C. residents add applicable sales tax to plan total). All Canadian residents add seven per cent GST to plan total plus postage and handling.

This is one of our new designs. Many innovative plans are now available in our NEW two-storey plan catalogue for \$13.85 including postage and handling and seven per cent GST.

Make cheque, money order and Visa or MasterCard authorizations payable to: The Acton Tanner Home of Week, P.O. Box 150, Acton, Ont. L7J 1G8.

Showcase your business or service in this spot for as little as **\$10** A WEEK
 Call the Tanner at **853-5100**

PETER ZIONS CONSTRUCTION Ltd.

853-2464 • ACTON
 "A Family Building Tradition for 28 Years"
 ♦ Home Improvements
 ♦ Licensed R-2000 Home Builder

Twiss Fuels

• Shell Fuels & Lubricants
 • 24-Hour Burner Service
 • Hot Water Heater Rentals
 • Energy-Efficient Testing
 • Installation
878-6380
 Unit 15, 32 Steeles Ave. Milton

Angelo's CARPENTRY

Custom Trim Work
 Sundecks • Bars • Wall Units
 Rec Rooms • Kitchens
 General Carpentry
Supply and Installation of French Doors
 Highway 7, East **856-1333**
 (Between Guelph & Rockwood)

NH MH North Halton Material Handling

- Sales & service
- Residential garage doors & openers
- Commercial overhead doors
- Dock levellers & Lift trucks
- 24 hour service
- Seniors' discounts

FREE ESTIMATES
853-2550

ALL WORK GUARANTEED

ABR

ROOFING & ALUMINUM
 Specializing in Re-Roofing
 Siding • Eavestroughing
 New Roofs • Repairs
 Soffit • Fascia
ANDREW B. RAMSDEN
 Free Estimates **853-1452**

VINYL OR ALUMINUM
 Siding • Soffit • Fascia
 5" Seamless Eavestroughing

SALES • INSTALLATION • SERVICE

Do it the Right Way...
RITE-WAY ALUMINUM
 Serving Guelph & Area since 1980
Free Estimates • Fully Insured
Ask About Our Warranties
 20 Taggart St., Unit 5, Guelph
821-9330

Leathertown LUMBER

LUMBER, PANNELLING & PLYWOOD
 PLUMBING, ELECTRICAL
 HARDWARE, HAND-TOOLS
 PAINTS, STAINS, WINDOWS, TILES
 DOORS, TRIM & SIDING

"Everything you need to do the job right."
Leathertown Lumber Inc.
 Main St. North • 853-1970

DENNY'S INSURANCE

50 YEARS EXPERIENCE
 Serving All Your Insurance Needs
 Home • Auto • Business • Travel
 Life • Mortgage Ins. • Group • RRSP
853-0150
 15 Mill Street West
 Your Insurance Broker Understands