

# UNBELIEVABLE!

**ACHILLES  
MAZDA**  
*Personal*  
**LEASE**

*Brand  
New!*

*Limited  
time  
offer!*



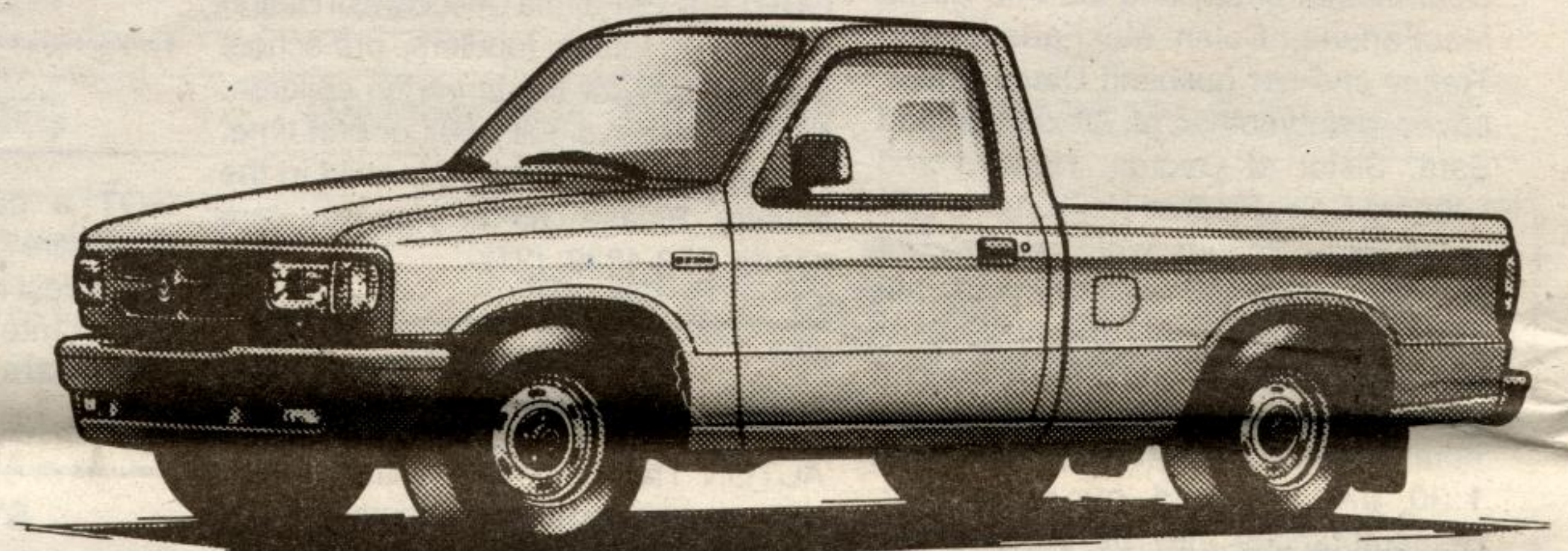
*Brand  
New!*

**ONE OF  
THE BEST  
WARRANTIES IN  
THE BUSINESS**

**1994 MAZDA MX3\***  
From **\$14,055** or Lease from **\$229** per month



**1994 MAZDA PROTEGE DX\***  
From **\$12,095** or Lease from **\$199** per month



**1994 B2300\***  
From **\$10,675** or Lease from **\$159** per month

Get Up To **\$1500 OFF** **OR** A Great MAZDA Personal Lease up to 48 months

*At Achilles, it's not just the car we're selling...*

**We're also selling service  
We're selling Mazda**

**"It's worth the drive to Achilles in Acton"**

**mazda**  
IT JUST FEELS RIGHT

**ACHILLES mazda**

SALES • SERVICE • PARTS

RENTAL • LEASING

**357 Queen Street East**

SUPER DEALS

SUPER DEALER

**(905) 453-8965**

**ACTON**

**(519) 853-0200**

TORONTO & BRAMPTON

GEORGETOWN, ACTON, ROCKWOOD

\*BASED ON A 48 MONTH LEASE FOR VEHICLE EQUIPPED AS DESCRIBED. SHORTER LEASE TERMS AVAILABLE. A MINIMUM DOWN PAYMENT OF \$1,700 B2300 and PROTEGE, \$1,850 MX3 AND A SECURITY DEPOSIT OF \$200 IS REQUIRED. 100,000 KM MILEAGE CONDITIONS APPLY. FREIGHT, P.D.I., LICENSE, INSURANCE AND TAXES NOT INCLUDED. MINIMUM DISCOUNTS ARE FROM M.S.R.P. AND APPLY TO VEHICLES PURCHASED AND CANNOT BE COMBINED WITH LEASE OFFER. SALE PRICE INCLUDES REBATE, PLUS FRT, PDI TAXES. OFFER EXPIRES MAY 3, 1994. VEHICLES MAY NOT BE EXACTLY AS ILLUSTRATED.