

# Acton kids take different path to education

BY DOUG HARRISON

The Acton Tanner

Kimberley Rogers wants Acton's SCORE program to be extended across Halton Region.

The program, launched in Acton about 11 weeks ago, involves at-risk students aged 13 to 16 who don't fit into the school system.

Teenagers in the SCORE program either don't respond to teachers in the classroom or don't function well in a large group. Most of the students identified for SCORE

attend E.C. Drury High in Milton, where there is more intervention and programs offered to them.

"With us, the kids are taken out of the school community and put back in their home community, where they work at job placements to build on success," says Rogers, program director and graduate of Sheridan College's Behavioural Management program.

"The students are still getting their education, only it's down a different path."

SCORE is an acronym for School Community Outreach and Experience.

Rogers says the students can earn four credits—math, English, personal life management (learning life skills, career planning) and co-operative education.

Acton residents Jason Waterworth, Shane Sero and Jarret Handford are involved with SCORE, which operates out of the ASSIC office.

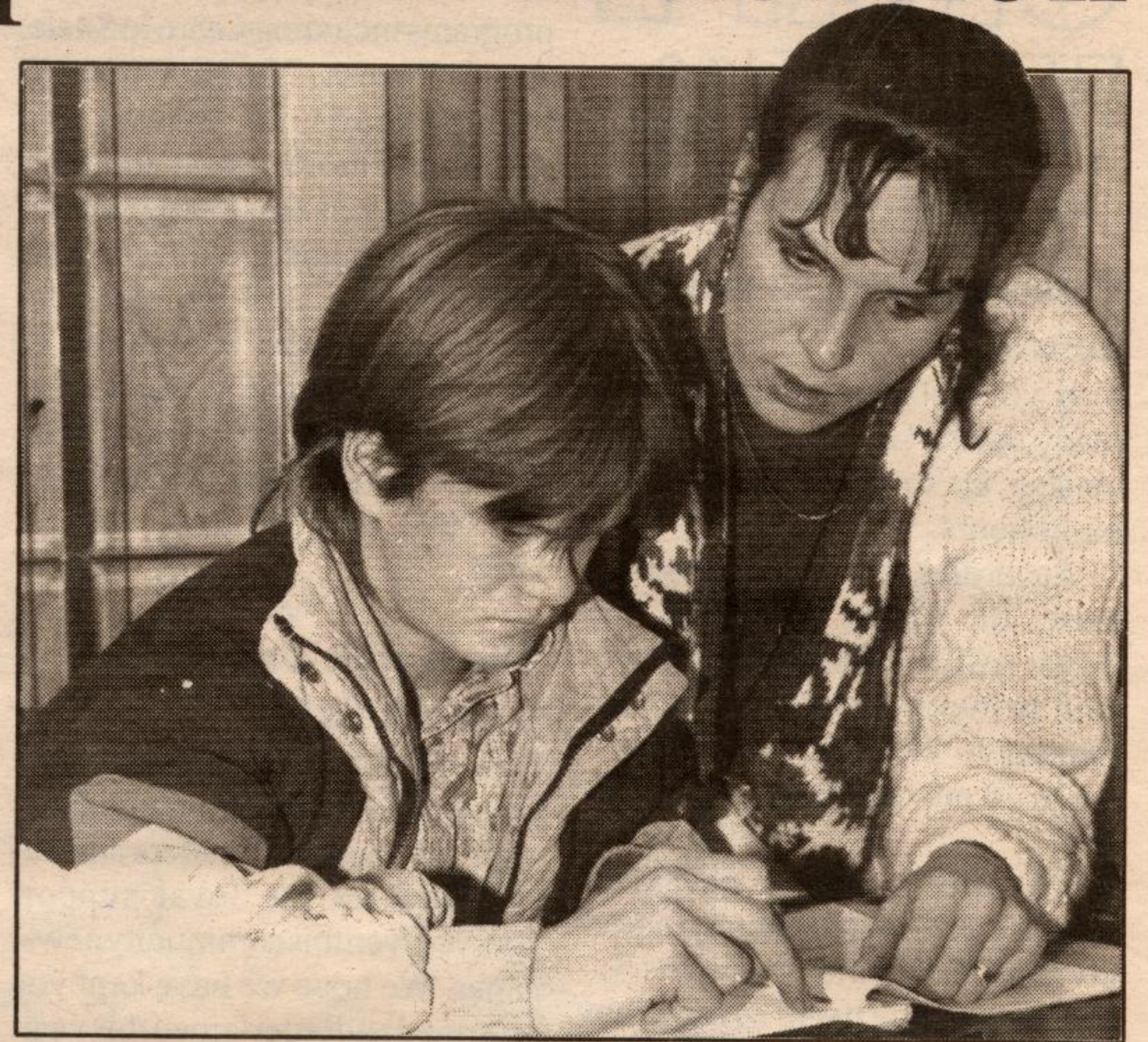
Waterworth has his job placement at Acton Auto Tech, where he does jobs such as oil changes and rotating tires, under the supervision of Kevin Kamminga.

Sero and Handford are employed by Al and Janet Cunneyworth of Al and Al's Red Brand Meats. The pair work on weighing and pricing products, grinding meats, proper equipment use, merchandising and taking inventory.

Rogers praises ASSIC director Peggie Balkind, who has donated the centre's basement space to SCORE until the end of January.

The Halton Board of Education doesn't have the funds to place SCORE in its own office space, and Rogers is hoping someone will come forth before the end of next month and offer a small facility equipped with a phone.

Anyone who can help SCORE find a new location in February or is interested in offering a job placement to one of its students, can contact Kimberley Rogers at 853-3310.



**HELPING HAND:** School Community Outreach and Experience (SCORE) program director Kimberley Rogers helps Jason Waterworth with a math question. (Doug Harrison photo)

## AZTEC COMPUTER

REPAIRS      UPGRADES      SERVICE

### PC CLASSROOM!!

**Computer classes forming NOW!!**

**For beginners of all ages.**

**Learn to use DOS and Windows.**

**Also intermediate word processing and spreadsheet applications.**

**Daytime, weekend and evening classes.**

**Six-hour courses for just \$79.**

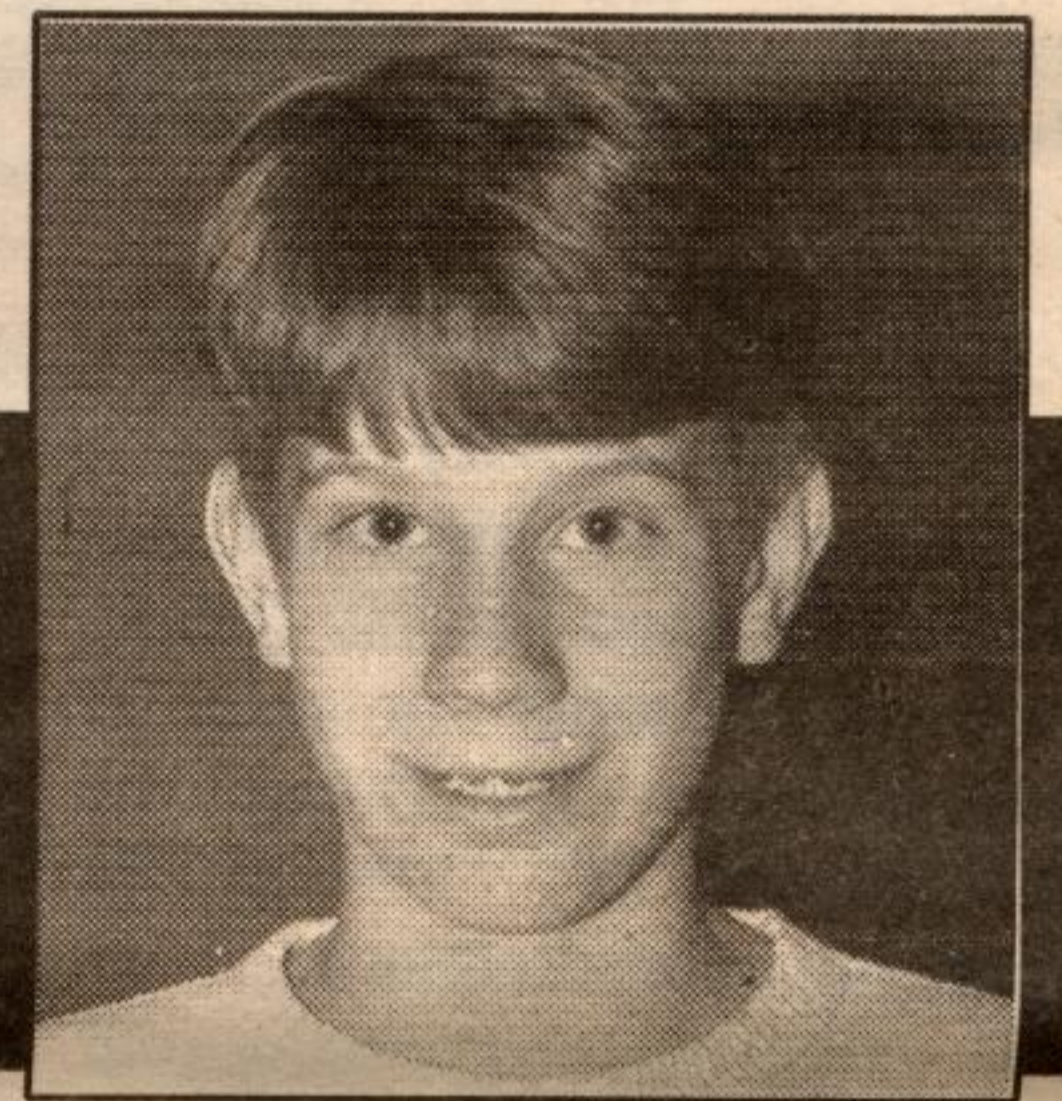
**A great Christmas gift!!**

*"Quality Products & Support"*

**348 GUELPH ST., UNIT 3, GEORGETOWN 873-2141**

## Andy's

### CARRIER OF THE MONTH



**Congratulations to ... MARK FASERUK!**

The Acton Tanner Carrier of the Month for December is Mark Faseruk, a Grade 8 student at McKenzie-Smith. Mark is an avid baseball and hockey fan and plays defence on the Pee wee I rep team.

When not playing organized sports, Mark enjoys a pick-up game of road hockey or watching "Home Improvement."

Keep up the good work, Mark!

*Mark will receive a delicious pizza from Andy's, where quality and tradition make the difference! Phone 853-0300.*

# Herrington graphics

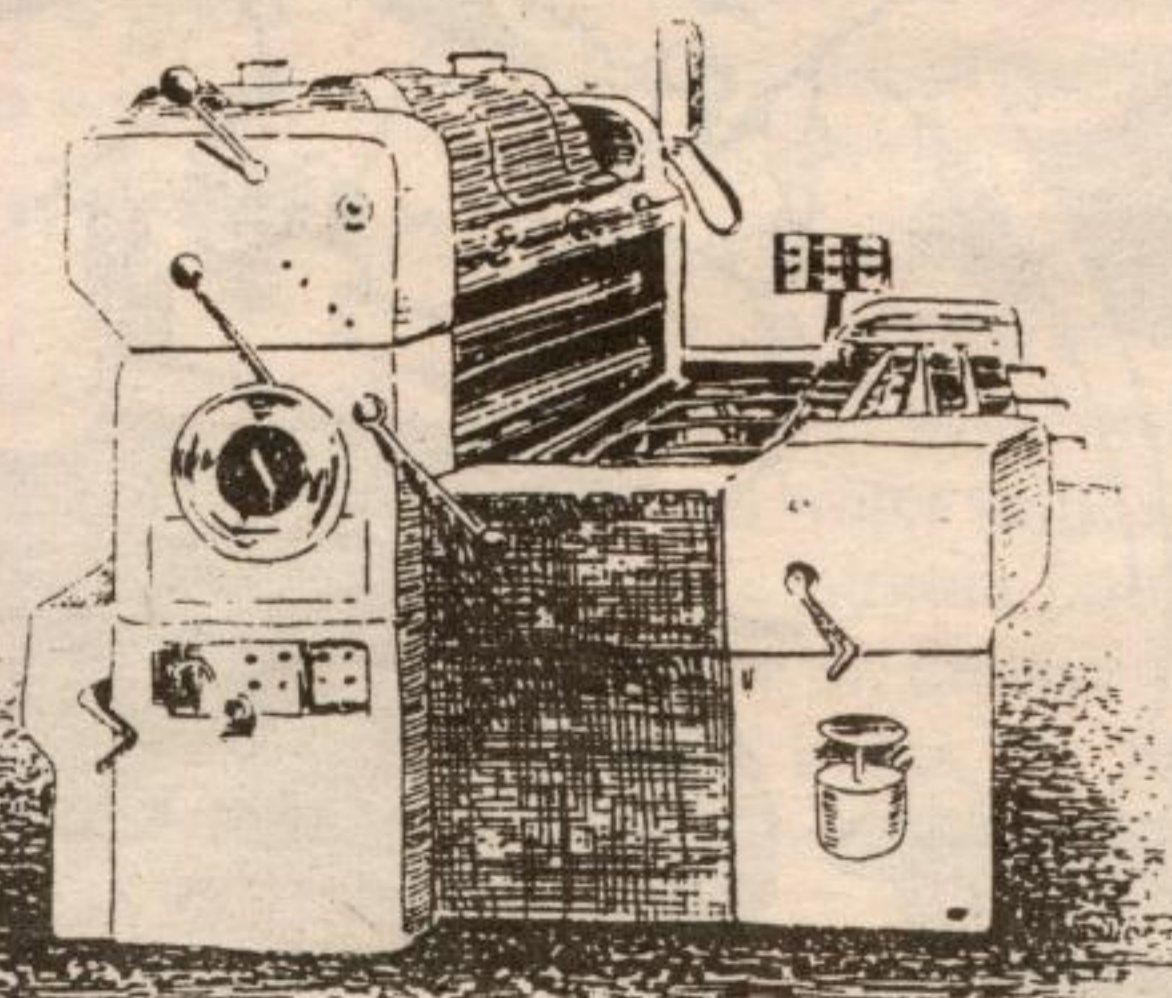
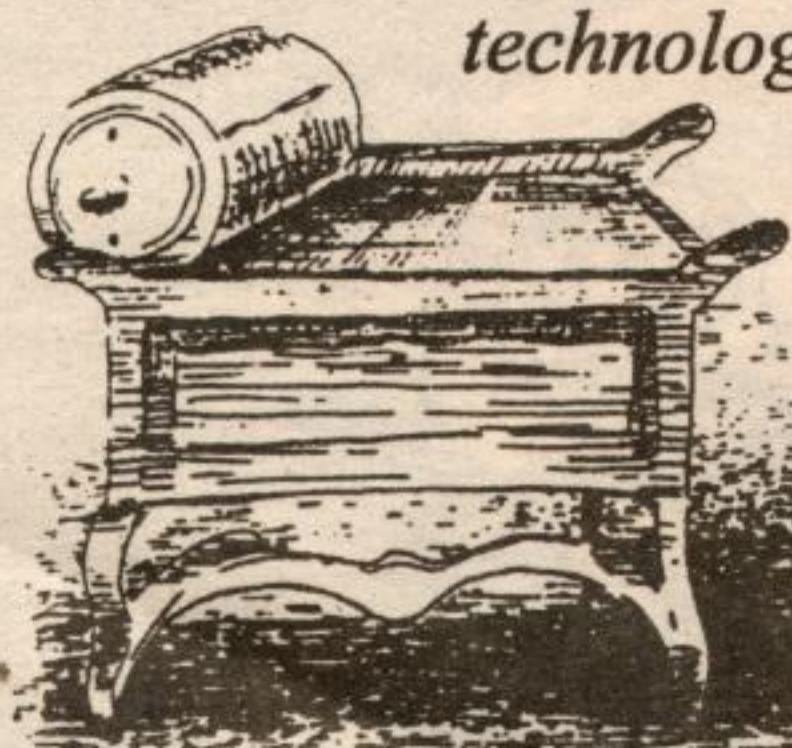
## Colour photocopies only \$1!!

*Quality Graphic Suppliers Of ...*

Business Cards • Letterhead • Envelopes  
Business Forms • Computer Forms • Brochures  
Posters • Newsletters • Flyers • Menus • Cheques  
Personal Stationery • Invitations  
Four Colour Process  
*... For Over 20 Years*

**We deliver quality printing**

*"Where old-fashioned quality meets modern technology"*



12 Main St. N.  
Acton, Ontario  
L7J 1V9

853-2401  
1-800-565-3691  
FAX: 853-1439



THE CORPORATION OF  
**THE TOWN OF HALTON HILLS**

Mayor Miller  
and  
members of council  
invite you  
to donate at  
Sacre-Couer parish hall  
39 Guelph St., Georgetown.

**Wednesday, Dec. 29  
2-7 pm**

Blood Donors Give  
The Best Gift:  
Themselves!

Please...  
Give Blood!



**Please support this community clinic.  
The need for blood is critical!**