

Guelph City Mazda

# FINAL, FALL 93 CLEARANCE

ONLY  
3  
LEFT

323



**\$1000.00** Discount\*

... and  
introducing **NEW** for '94  
the all new Mazda B Series Truck



ONLY  
6  
LEFT

PROTEGE



**\$1000.00** Discount\*



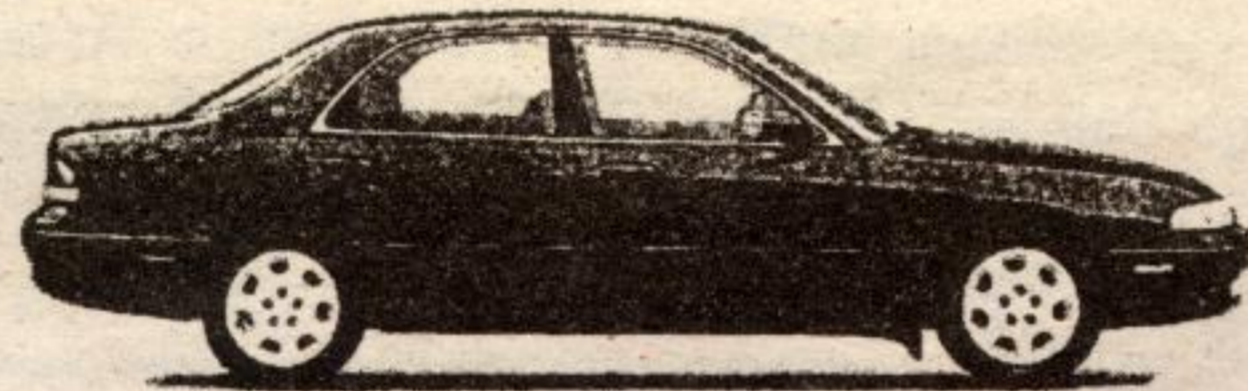
MX-6  
Mystère

ONLY  
5  
LEFT

**\$1000.00** Discount\*

ONLY  
6  
LEFT

626 CRONOS



**\$2000.00** Discount\*



MPV

ONLY  
4  
LEFT

**\$2000.00** Discount\*

**RIGHT NOW GET GREAT DISCOUNTS\*  
ON A WIDE RANGE OF MAZDAS,  
BUT DON'T WAIT,  
THESE DISCOUNTS WONT LAST LONG.**

\* Minimum discounts off M.S.R.P. are as follows: 926 Serenia - \$4,000; 626 Cronos, MPV - \$2,000; Protege; 323, MX-6 Mystère, Trucks - \$1,000. Offer applies to new 1993 Mazda vehicles purchased and delivered from dealer stock at participating Mazda dealers from Oct. 6, 1993 for a limited time. Dealer participation is 50% of discount. Discounts cannot be combined with any other offer. Limited supply and stock may vary by dealership. Dealers may sell for less. see dealer for details.



**mazda**

IT JUST FEELS RIGHT



# GUELPH CITY mazda

**(519) 837-3020**

949 WOODLAWN RD. W. IN THE GUELPH AUTO MALL ... **Only Minutes Away**