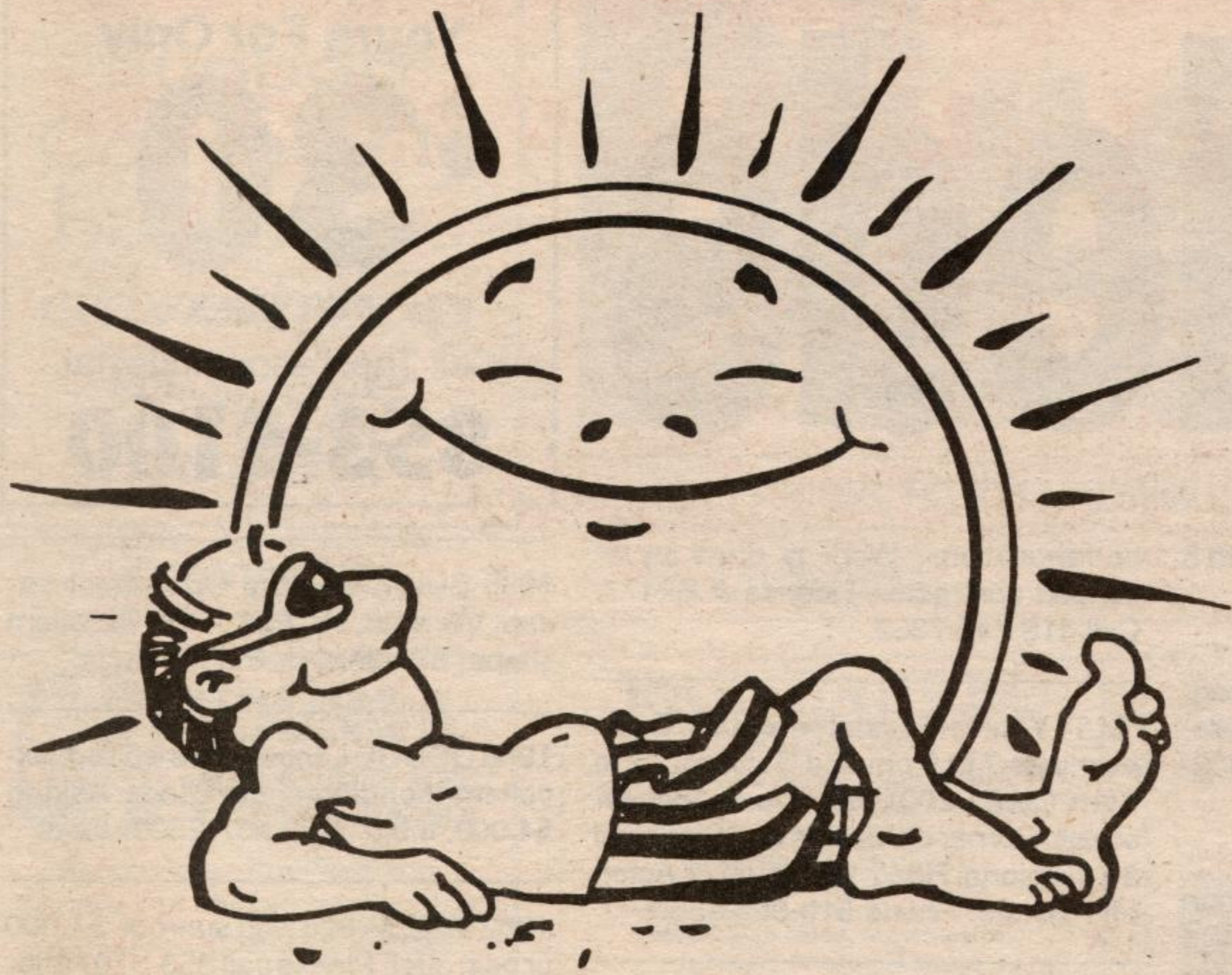


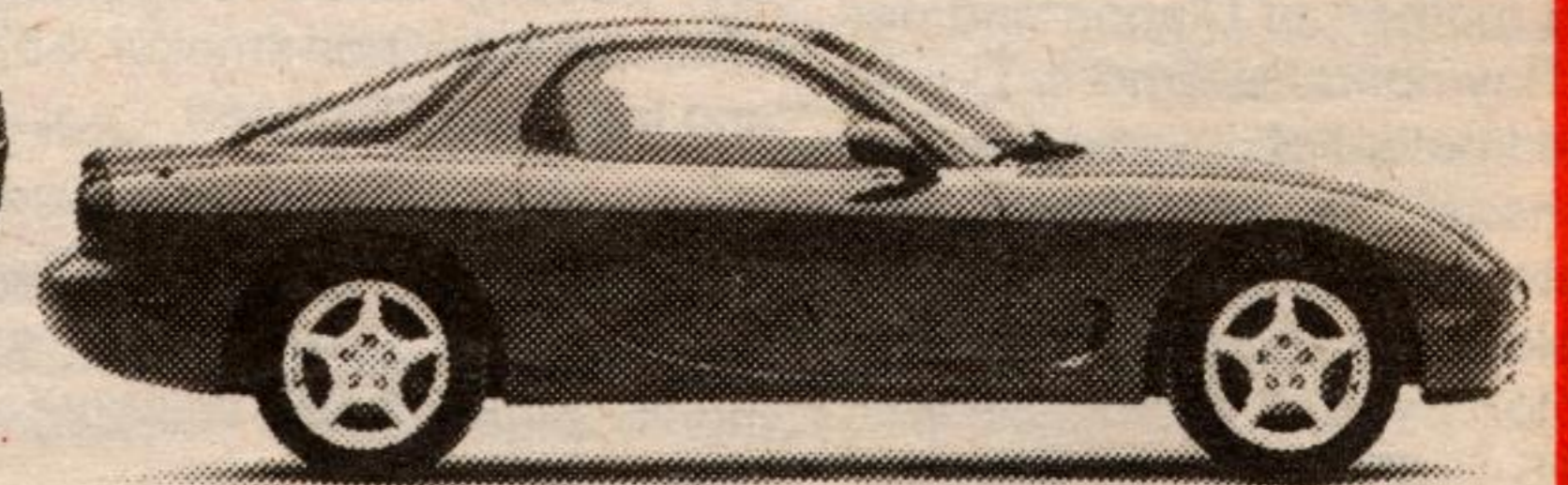
IT'S WORTH THE DRIVE TO ACHILLES ... IT'S WORTH THE DRIVE



**The Hottest Month  
of the Year —  
IS THE BEST  
TIME TO SAVE AT  
ACHILLES MAZDA**

**NO-CHARGE AIR or \$1,500 OFF ALL VEHICLES!**

**1993's  
ARE  
HERE!**

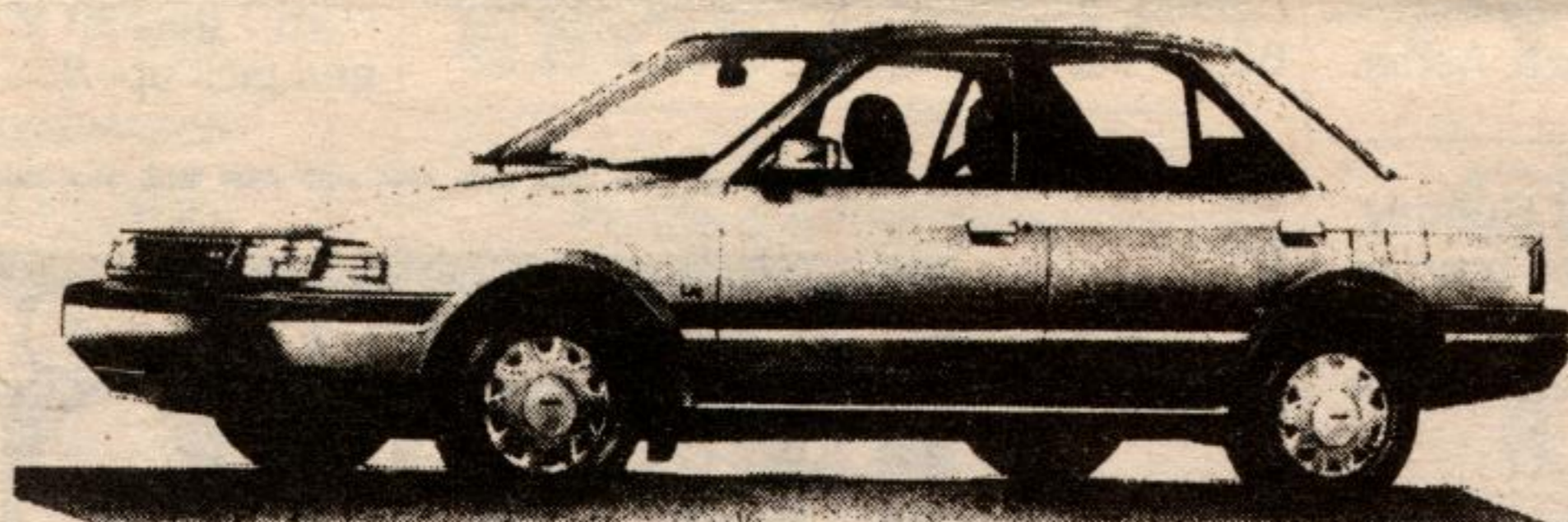


'93 MX-6 MYSTERE

'93 626 CRONOS ES

'93 RX7

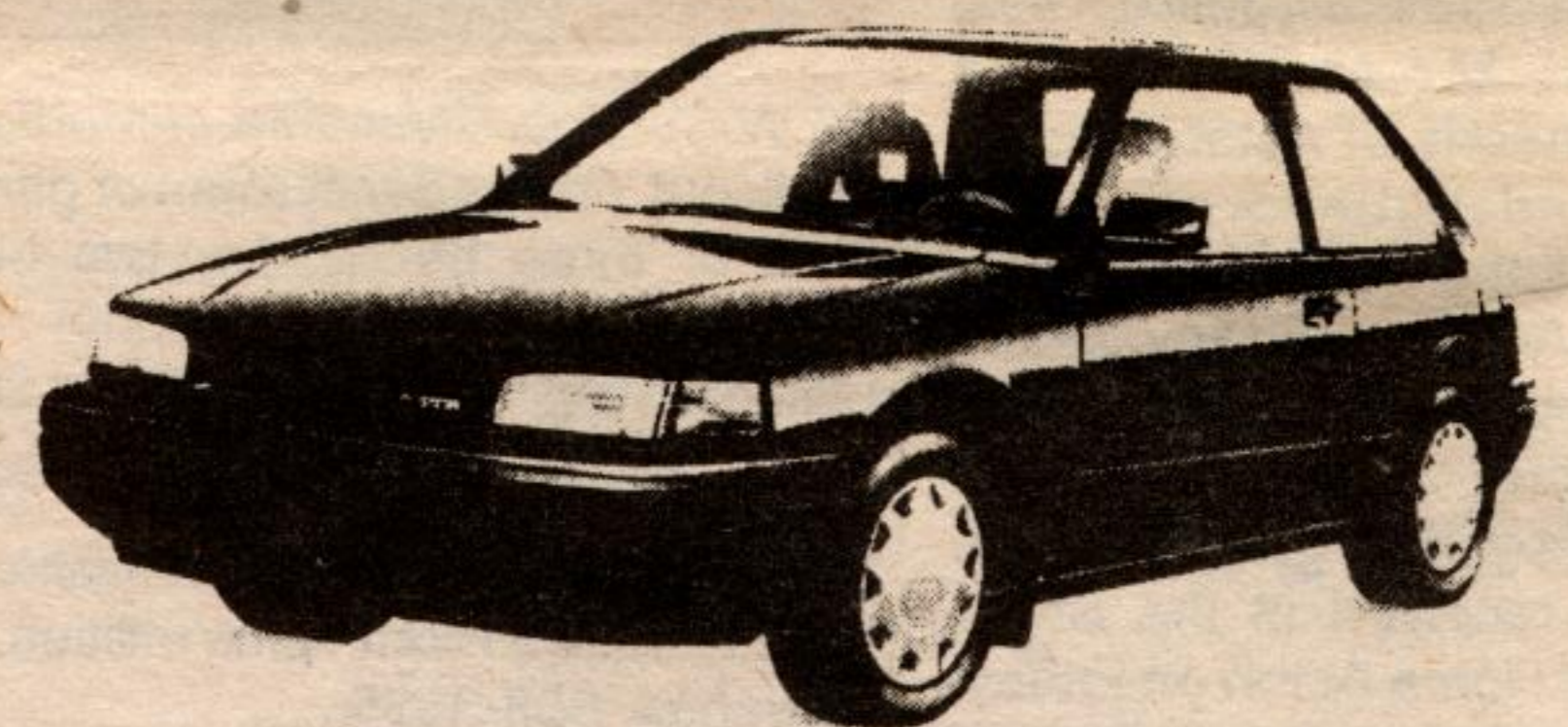
**NEW  
1992  
PROTEGE**



FROM AS LOW AS

**\$10,925 \***

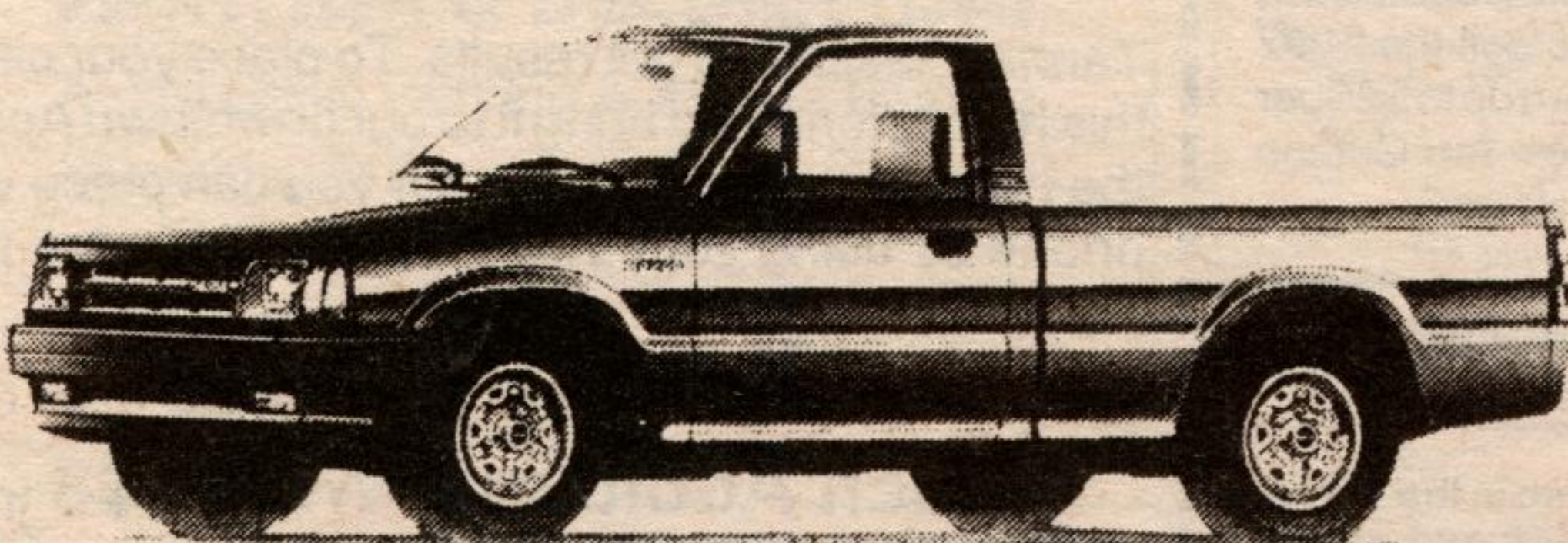
**NEW  
1992  
323**



FROM AS LOW AS

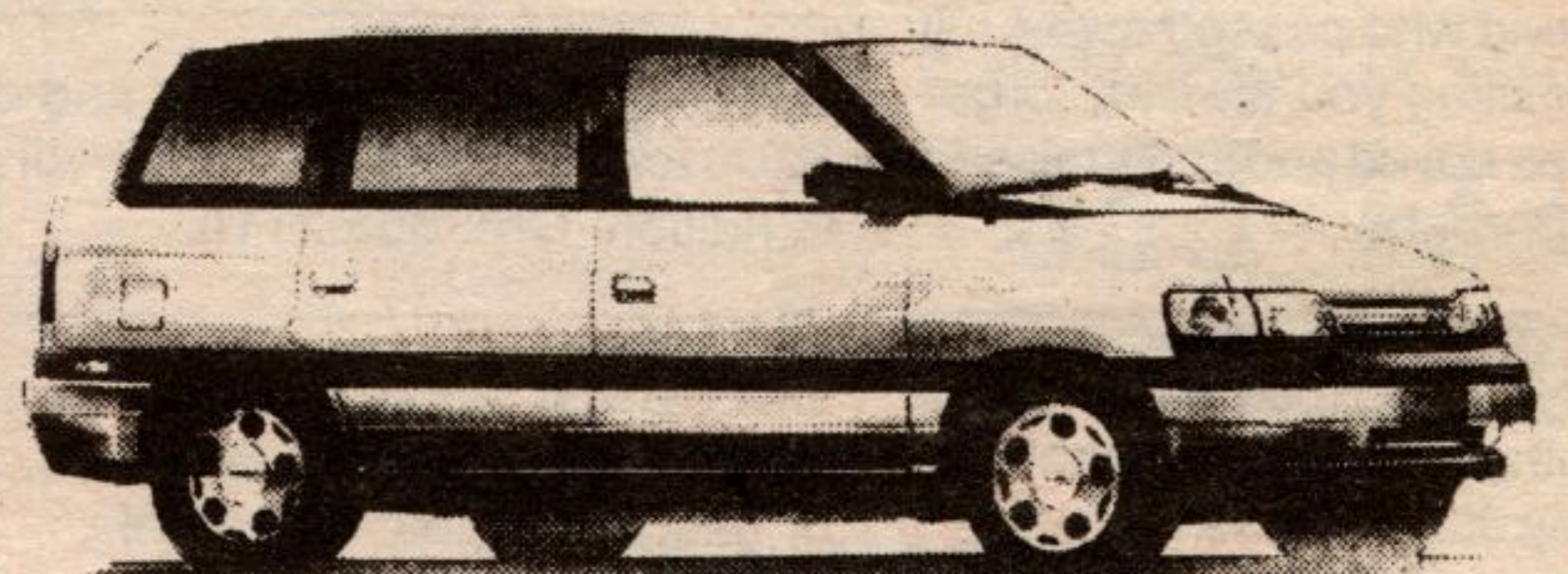
**\$7750 \***

**NEW  
1992  
B2200**



**\$8250 \***

**NEW  
1992  
MPV**



FROM AS LOW AS

**\$16,995 \***

**For the Month of July Only  
— NO CHARGE —  
EXTENDED MAZDA  
WARRANTY  
5 Years or 100,000 kms.  
Bumper-to-Bumper**

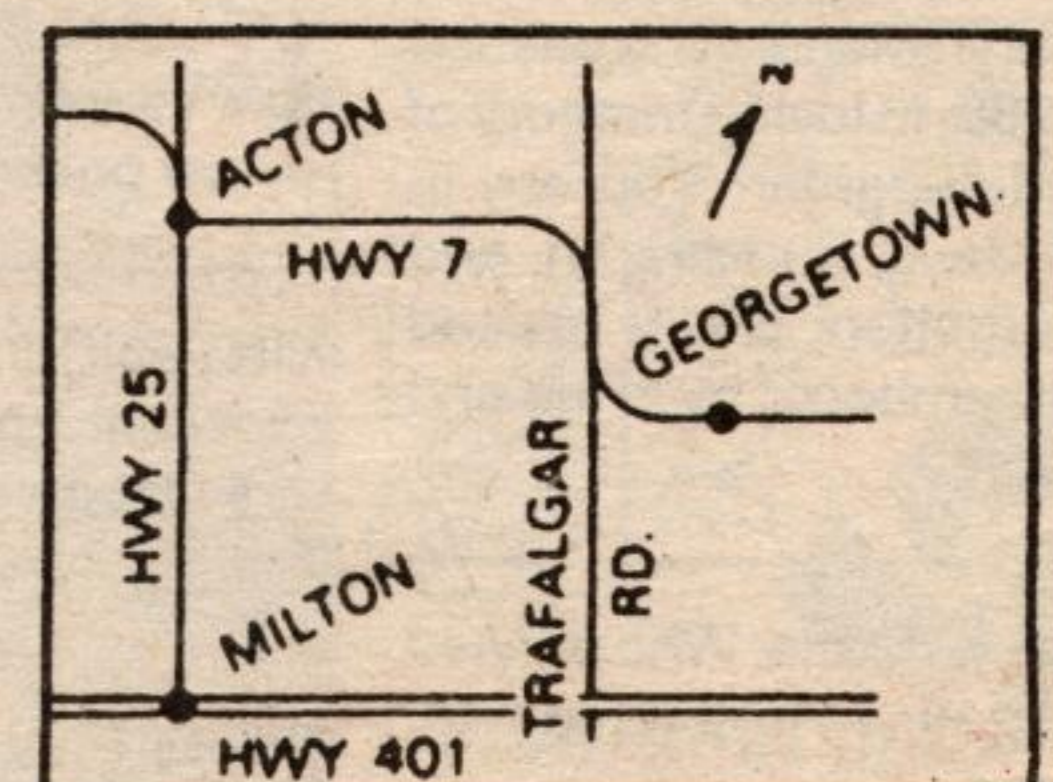
**Now That's Hot!**

\* Prices include all Factory Incentives. Rebates cannot be combined with any other factory offer or incentive. Prices shown do not include FREIGHT, PDI, LICENCE & TAXES. VEHICLES MAY NOT BE EXACTLY AS SHOWN, ALL OFFERS MUTUALLY EXCLUSIVE.

**Achilles Mazda Ltd.**

357 Queen Street East, Acton

**519-853-0200 • 416-453-8965**



TO ACHILLES ... IT'S WORTH THE DRIVE TO ACHILLES ... IT'S WORTH THE DRIVE TO ACHILLES