

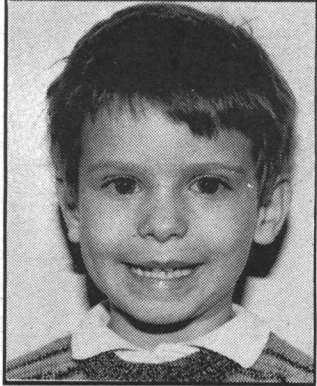
# Just For Kids



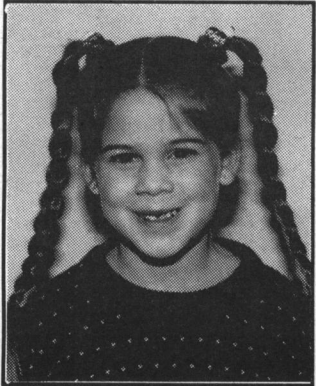
**KidVCo**  
The Finest in Kidswear  
877-7275  
Georgetown Marketplace

## Youth Forum

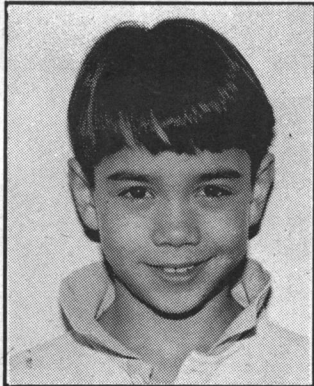
What's the best thing that happened to you in 1993



**Patrick, Kindergarten, Harrison Public School, Georgetown:**  
"I played on my swing-set all summer."



**Nicole, Grade 1, Harrison Public School, Georgetown:**  
"I got a loose tooth. I'm gonna put it under my pillow when it comes out."



**Tak, Grade 3, Harrison Public School, Georgetown:**  
"I went rock-climbing in Alberta in the summer."



**Kim, Grade 5, Harrison Public School, Georgetown:**  
"I got a Super Nintendo."

### JOIN THE DOTS

HAPPY NEW YEAR ★ HAPPY NEW YEAR

### New Year's puzzler

Listed below are words and phrases associated with New Year's. How many can you find and circle in the scrambled letter puzzle? The words go horizontally and vertically, backwards and forwards.

PARTIES  
CELEBRATE  
FUN  
MIDNIGHT  
CLOCK  
RESOLUTION  
FATHER TIME

NINETY FOUR  
KISS  
PARADE  
HORNS  
DANCING  
FIREWORKS  
HATS

N P F P F N C W Z H D H H  
U R A A I O L K C O L C A  
F G T R R I A H X R V W T  
I N H T O T C O Q N P N S  
R I W I W U P H K S A I P  
E C P E S L D O I G D N A  
M N S S M O I R S K W E T  
O A A R E S A T S J F T H  
K D L N Y E S A R L D Y G  
C E L E B R A T E Q E F I  
E S K R O W E R I F S O N  
L F A T H E R T I M E U D  
E V H O Z C E E R T R R I  
C S Q V P A R A D E W O M

### Celestial Surprises

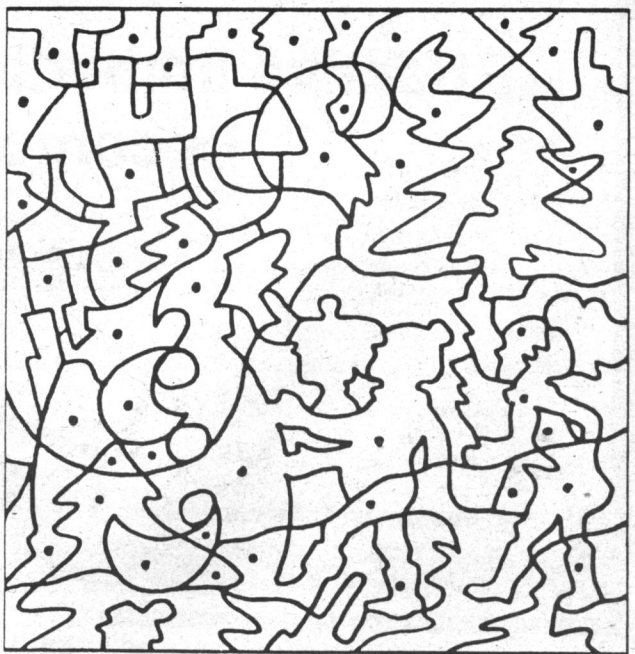
Unscramble the words below to reveal the secrets of the solar system.

- Years ago, people learned to tell time by reading **ETH RATSS**.
- The amount of time it takes for the Earth to orbit around the sun. **EON EARY**
- When is it hardest to see the Big Dipper? **RIWENT**
- This place has high, sharp mountain peaks, and its ground is sandy and gray. **ONOM**
- The end of the Earth's axis of rotation. **ELOP**
- Were a day equals 59 of Earth's days? **YERRCMU**
- These are huge, fiery balls of gas. **RSAST**
- The word planet comes from the Greek word meaning **RWN DRAEE**.
- The name of the curved path each planet travels in. **TRBOI**
- The average temperature on this planet is -370°F. **OPULT**

Answers: 1. The Stars 2. One Year 3. Winter 4. Moon 5. Pole 6. Mercury 7. Stars 8. Wanderer 9. Orbit 10. Pluto



**MYSTERY SCENE**  
SHADE IN ALL THE AREAS THAT CONTAIN A DOT TO SEE THE MYSTERY SCENE.



**Hey kids, we want to hear from You!**

Just for Kids needs your short stories, poems and riddles. Write and tell us what is happening at your school or social club, and we will do our best to publish your work!

Write to: **The Masked Puzzler at Halton Hills This Week, 232 Guelph St., Georgetown, Ont. L7G 4B1**

**Georgetown**  
185 Guelph St.  
Call 873-7011 to book your child's birthday party!

★ HAPPY NEW YEAR ★ HAPPY NEW YEAR ★