

Discover the Magic of
Christmas at . . .



Montgomery's

of Georgetown

Gifts and Collectibles



THE BRADFORD EXCHANGE



"King of Kings":
A host of heavenly angels gathers, seeming to form a halo of deep blue and radiant gold around their Lord. Gently, they lower the sacred crown onto His head and proclaim

Him King of Kings. This exalted portrait of the beloved Christ, re-creating an

original work by artist Jennifer Welty, is framed by a rosette of traditional stained glass images. Porcelain. Floral border. 20.9 cm.



"Gifts of the Magi":
Suffused in a heavenly light, the Holy Mother and Child seem to radiate purity and goodness as they serenely

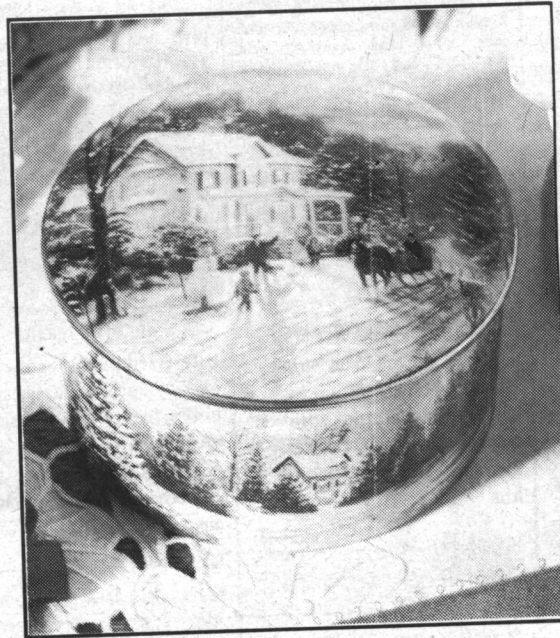
receive gifts of adulation from the

three earthly Kings. Artist Hector Garrido masterfully recalls the magnificent artistic style of the Renaissance in this dramatic, moving vision. Porcelain. Decorated with a gold border. 20.9 cm.

Montgomery's of Georgetown is an authorized Bradford Exchange Dealer and carries a large selection of current and back issue collector plates plus plate frames, hangers and stands.



"Where's Jamie?":
Because "Jamie" loves to play peek-a-boo, Mommy sometimes has a hard time knowing exactly where her little girl is! Today, a laundry basket full of warm, fluffy towels seems like the perfect hiding place. "Where's Jamie?" was designed by artist Jan Goodyear in an exclusive edition for the Ashton-Drake Galleries. Actual size is 23 cm high, seated in basket. Complete with miniature towel and laundry basket.



"Sleighride Home": The memories of Christmas, to share all year round. In artwork by renowned American Luminist Thomas Kinkade. Combined with the beloved Christmas music "Winter Wonderland". In a fine porcelain music box exclusively from the leader in collectible music box innovation, Ardleigh-Elliott.

Dealers do not charge Shipping and Handling. Save money and shop at your local dealer. Free parking at all meters for the month of December, and don't forget the free municipal lots all year.

CHRISTMAS HOURS:

Monday - Friday, 10 a.m. to 9 p.m.; Saturday 10 a.m. to 5 p.m.; and Sunday 12 p.m. to 5 p.m.

Collector Plates, Porcelain Dolls, Music Boxes, Collectible Figurines

873-9162

73 Main Street South

~ SHOP DOWNTOWN GEORGETOWN ~