

**GEORGETOWN'S LARGEST RETAILER OF CHRYSLER VEHICLES!**

# THE ALL NEW GEORGETOWN CHRYSLER



**\$1000 CASH BACK**

**ON NEW 1994 MAGIC WAGONS**

Air conditioning, automatic transmission, V6 engine, front wheel drive, dual air bags for added safety, AM/FM stereo, 7 passenger seating, power steering and brakes, luggage rack, rear wiper/washer & more. **IN STOCK TODAY!**

**\$17,888**  
After your rebate

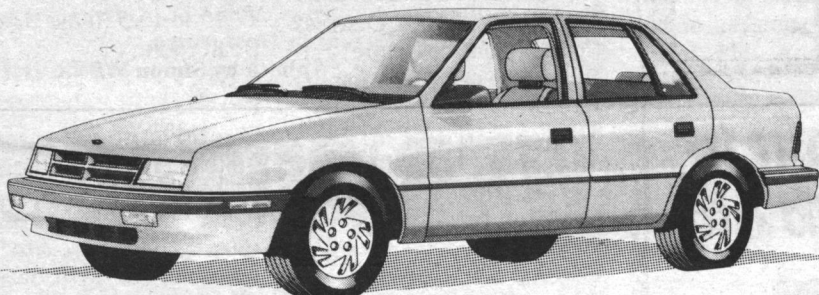
FOR ONLY

48 MONTH LEASE  
**\$289** MO.

**DUAL AIR BAGS**

**IN STOCK! THE BRAND NEW**

**1994 SUNDANCE/SHADOW**



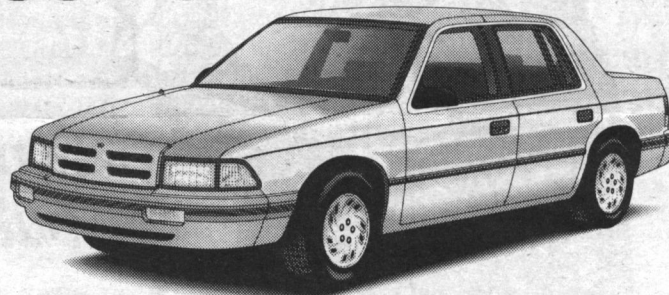
AIR, AUTOMATIC, STEREO, FRONT WHEEL DRIVE, AIR BAG, P/S, P/B, MORE.

**\$10,888** After Rebate

**AIR BAG!!!**

**HERE. NOW. THE BRAND NEW**

**1994 SPIRIT/ACCLAIM!**



AIR, AUTOMATIC, DELUXE CLOTH SEATS, FRONT WHEEL DRIVE, P/S, P/B, STEREO AND AIR BAG, MORE

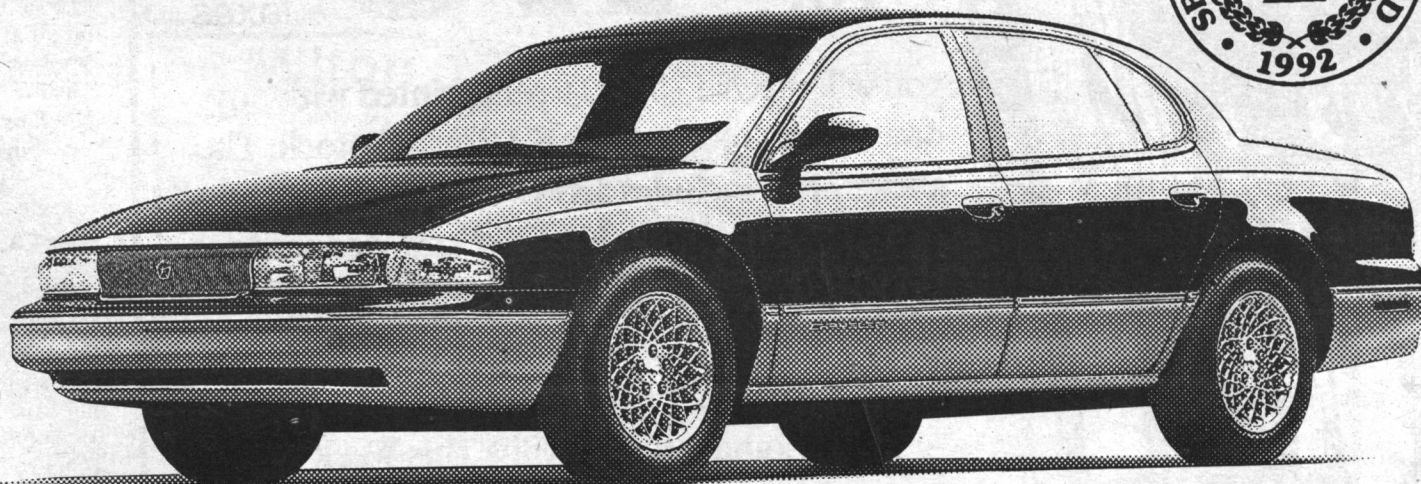
**\$13,888** After Rebate

**1994 CHRYSLER NEW YORKER**



fully loaded

48 MONTH LEASE  
**\$469** MO.



All prices shown are plus freight costs, license and GST/PST. Any rebates allowed are reflected in sale price and are assigned to dealer. Leases are 48 months OAC. Down Payments required on leases as follows: Magic Wagon \$1,900. New Yorker is \$2,000; plus frt. and air tax and security deposit.

**NEW DEALER, NEW PRODUCTS, NEW COMMITMENT**



**GEORGETOWN CHRYSLER (1993) LTD.**  
336 GUELPH ST., GEORGETOWN 877-0149 877-5108 TOR. 846-1170  
(HIGHWAY 7) CHRYSLER All you have to do is drive one.

