

Food drive set for Nov. 6

By Jean Layman
Special to HHTW

On Nov. 6, hundreds of youth members of the Scout/Guide and Cadet organizations, together with adult volunteers, will conduct a door-to-door food drive for the Love in Christ Food Bank in Georgetown and the Acton Food Share food bank in Acton.

This blitz will start at 9:30 a.m. and will continue until 2 p.m. Special grocery bags have been printed and provided by a number of corporate sponsors.

A typical recipe for sharing will be given as part of the promotion in local papers with the bags and indicates the most needed items: powdered milk, canned milk, peanut butter, cans of pork and beans or stew, tinned fish or meats, soups, spaghetti and other pastas. The food banks are also in need of baby foods and plabum.

Apartment tenants who want to donate should con-

tact their building managers in order to coordinate the building pickup. Anyone who is missed and wishes to donate can phone 878-1328 in Georgetown and 853-2050 in Acton. For all those in the rural area, the Love in Christ Food Bank is open every Wednesday and donations can be dropped off.

Scouting and Guiding is devoted to helping young people develop positive abilities to deal with today's fast-paced complex society. It provides youth with the opportunity to develop self-reliance, the ability to work with others, and the confidence to put their values into action.

This year, the Georgetown drop-off location is the Georgetown Terminal Warehouse, located at 34 Armstrong Ave. (right next door to Wastewise) and the Acton drop-off location is the Scout House.

Gerry Rivers of Acton is the chairman of the Acton Food Drive for North Halton Scouting and Guiding. The



Gerry Rivers

1993 Scouts and Guides Food Drive will be held in Rockwood on the same day.

Gerry Rivers is chairman of Acton Scouting Groups 1st and 3rd. The Rivers have four children, three are involved with Scouts and Guides. The Rivers have a daughter in Sparks, a son in Cubs and a daughter in Brownies. Gerry is Registrar and Treasurer of the Men's Recreational Baseball in Acton. The family attends St. Alban's Anglican Church. For information on the Food Drive, call Gerry at 853-2653.



Scouter Donna Thompson and Guider Elaine Frei were busy putting up posters announcing the Scout-Guide Food Drive, to benefit the Georgetown Love in Christ Food Bank, Nov. 6. photo by Jean Layman



Breakfast with Julian

The Halton Hills Chamber of Commerce will be hosting a breakfast for members of the Chamber and the community with the newly elected Member of Parliament, Julian Reed, this Tuesday, 8:30 a.m. at North Halton Golf and Country Club on Maple Ave. in Georgetown.

The newly-elected MP will address issues and concerns of the riding and take questions and comments from those attending. The Chamber hopes many residents will participate in this first public event with the Julian Reed and send him off to Ottawa with a clear message of our concerns and hopes.

For more information, please contact the Chamber office at 877-7119 or fax 877-5117. Reservations only, no tickets available at the door.



354 Guelph St.
Unit 27
Georgetown, Ont.
(416) 873-1655



THE CARPET BARN
DIVISION OF HALTON FLOOR FASHIONS LTD.
877-9896
877-1666
26 Guelph Street
Georgetown, Ont.

TRAFFIC TICKET NETWORK

Did you know that a guilty plea can accumulate demerit points which can lead to... a license suspension, higher insurance rates and MORE!

We are...
Ex-police officers from Halton Region who now work to defend you in traffic court. Let our experience work for you.

We also...
Can assist you in small claims court.

245 COMMERCIAL ST. MILTON 875-1415

Farm outlet planned for Sheridan Nurseries

Sheridan Nurseries, Canada's largest, fully integrated grower of nursery stock, was founded in 1913 and worked on 100 acres of land in the small village of Sheridan. This location is now at the intersection of Winston Churchill Boulevard and the QEW in Oakville. The property was sold and a new head office was built on the 941 acres at Glen Williams in 1987, where they have been farming since 1955. They also have 1250 acres at three other farm locations, including Norval.

Today Sheridan Nurseries operates seven retail Garden Centres and five wholesale yards in Montreal, Kitchener and the greater Toronto area, offering a wide range of ornamental trees, shrubs, evergreens, perennials and roses. Their friendly and professional Garden Centre staff are there to help you with all your home and garden needs. A wide range of hard-goods, tropical plants, giftwares, Christmas items, as well as a full range of nursery stock is available at the retail stores. You may also want to take advantage of their planting and maintenance service.

The Glen Williams wholesale yard was open to the public for the first time on Saturday October 16th. It was such a resounding success that they will do it again on

Saturday and Sunday, October 30th and 31st from 9 a.m. to 3 p.m. The material available is surplus and field clearance stock, and although some is considered #2 stock, it's of good quality. Come and take advantage of rock bottom prices and save 70 percent or more! (prices range from \$1 to \$10 and are slightly high-

er on larger items) The demand for a "Farm Outlet" in the Halton Hills area will be met in the spring of 1994 with plans to open the Glen Williams yard to the public. The farm is located at 12266 10th Line, R.R. #4, Georgetown. So if you are looking for low prices and quality plants, it's worth the drive.



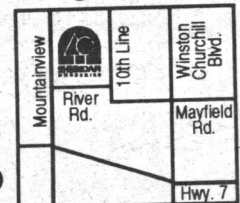
NURSERY CLEARANCE SALE

End-of-Season PLANT MATERIAL
Field Clearance SHRUBS and EVERGREENS
Our Most Popular Varieties on Sale Now!
Sat. & Sun. Oct. 30 & 31,
9 am to 3 pm
ONLY...

\$1 - \$2 - \$5 - \$10

Take advantage of these great savings today!

CASH & CARRY
VISA
(905) 873-0522



BRAMPTON'S CHEAPEST MATTRESS SALE

BEST BUYS ON SEALY & SIMMONS

	SUGG. PRICE	SALE PRICE
Bed Frame (39-54) Limit 2 Per Customer.....	\$39 ⁰⁰	\$19 ⁹⁹
Single Mattress Spring Construction	\$159 ⁰⁰	\$79 ⁰⁰
SINGLE SET	\$349⁰⁰	\$119⁰⁰
Double Mattress Spring Construction	\$259 ⁰⁰	\$129 ⁰⁰
Queen Mattress	\$318 ⁰⁰	\$149 ⁰⁰
Queen Set.....	\$399 ⁰⁰	\$199 ⁰⁰
Orthopedic Twin Mattress Set.....	\$599 ⁰⁰	\$199 ⁰⁰
Double Set (25 Year Warranty).....	\$699 ⁰⁰	\$259 ⁰⁰
Sealy Double Set Orthopedic (Limit 2 Per Customer).....	\$647 ⁰⁰	\$299 ⁰⁰
Sealy Queen Set.....	\$735 ⁰⁰	\$349 ⁰⁰
Orthopedic King Set (20 year Warranty).....	\$1299 ⁰⁰	\$499 ⁰⁰
Simmons Double Set.....	\$689 ⁰⁰	\$449 ⁰⁰
Simmons Beauty Sleep Queen Set.....	\$999 ⁰⁰	\$599 ⁰⁰
Simmons Beauty Sleep Queen Set (pocket coil).....	\$1099 ⁰⁰	\$799 ⁰⁰
QUEEN ORTHOPEDIC SET.....	\$1499⁰⁰	\$499⁰⁰

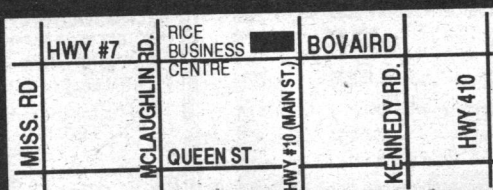


MATTRESS CLEARANCE SALE!

Country Mattress Sleep Shop

452-9820

HOURS: MON-TUES 10-6, WED-THURS 10-9, FRI 10-6, SAT 10-5, SUN 11-4
190 Hwy. #7 West, Unit #58
Brampton
(Rice Business Centre)



SAVE 70% OR MORE!