

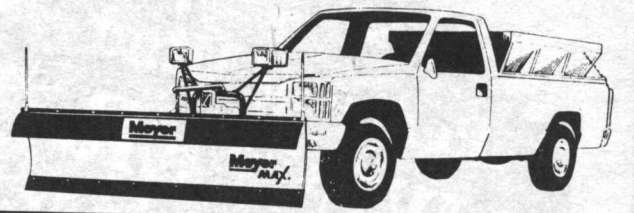
Where there's snow...there's Milton Truck Equippers

Milton Truck Equippers have been servicing the Halton Region and surrounding area since 1991. They are authorized dealers for Meyers, Fisher and Diamond snow plows

as well as Swenson, Fisher and Meyers spreaders. At Milton Truck Equippers they offer 24 hour emergency service during a storm for parts

and service. They also carry parts for Western and Artic plows. Their shop hours are Monday to Friday, 8 am to 6pm and Saturday 8 am to

2 pm. The shop is located on the south west corner of Derry and Tremaine Road, 1 mile west of Milton Hospital, 6740 Tremaine Road, Milton, Ontario. (905) 875-1962.



Exclusively For Municipal Trust Customers

Introducing Thrifty

Thrifty Car Rental, Georgetown is owned and operated by Stephen Horbatiuk and Bonnie Glen who also operate the Thrifty locations in Brampton and Orangeville.

As the car rental and used car sales leaders in both communities, it is expected that they will bring with them to Georgetown the same level of quality service and product that they deliver consistently in Brampton and Orangeville.

Thrifty Georgetown will feature Chrysler vehicles including the fabulous new LH vehicles, Concorde, Intrepid and, later in the year, the New Yorker LHS, the Jeep Grand Cherokee and the many other quality Chrysler products offered in 1993/94.

Marc Wagner will be the friendly voice at the other end of the line and with his 5 year of experience in the car rental business, he will be able to effectively satisfy all of your car rental needs. Give Mark a call today, he's looking forward to meeting you!

Do-It-Yourself Car Care

1. Read your owner's manual. The owner's manual that comes with your vehicle contains valuable information on troubleshooting, basic maintenance and recommended supplies.

2. Park your vehicle on level, firm ground or pavement. If possible, protect your vehicle from the weather by parking in a well-ventilated carport or garage.

3. Have the right replacement parts and fluids. For example, if you're changing motor oil, you will need four or five litres and a new oil filter.

4. Have the right tools. For example, if you're changing your motor oil you will need a drain pan, wrench for oilpan plug, a filter wrench, a tunnel for pouring the new oil and a container for transporting the used oil to a collection site.

5. Know what the job requires. Know when the engine should be running and when it should be off, and whether it should be hot or cold. For example, if you're checking the oil level the engine should be warm, but cool if you are changing the thermostat. Also, have an idea of how long the job should take so you can allow enough time and avoid hasty mistakes.

6. Take the necessary safety precautions. If you are working under the vehicle, make sure the jack or ramp is sturdy enough and in the proper position and that your vehicle is in "park" with the emergency brake on. Take care when working around the battery, electrical system refrigerant storage tank and moving parts. Wash your hands after exposing them to fluids.

If You Lease The Same Car At A Lower Monthly Payment, Municipal Trust Will Give You \$100.

See Details Below.

Compared to traditional car loan financing, Municipal Trust may be able to save you hundreds, even thousands of dollars by leasing you your next new car.

If you're a Municipal Trust customer, you can lease the car of your choice through the TrustLease™ program. TRUSTLEASE™ will even take care of your trade-in for you.

We're confident that TRUSTLEASE™ is the best lease offer available. If not, we will give you \$100 if you obtain the same car lease with the same options, on the same terms anywhere else at a lower monthly payment than your TRUSTLEASE™ quotation.

Find out more at any Municipal Trust branch.



municipal trust

The hometown alternative to big city banks.

Georgetown 28 Main St. S., 873-4077, Bill Price

Restrictions apply. Complete terms and conditions available at any Municipal Trust branch. \$100 guarantee in effect until January 31, 1994.