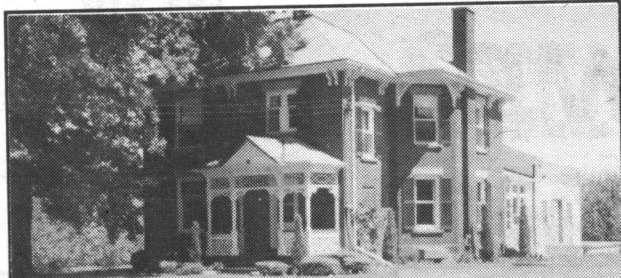


From Starter to Build Your Own...



25 Acres in Historic Churchville

Beautiful 1898, 3000 sq. ft. brick home with original wood. Double garage, 100 ft. drive shed & 3 barns. Great potential for future development! Asking \$1,279,000.

93-2-427

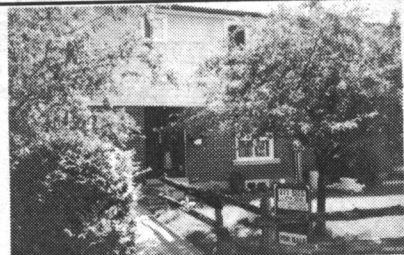
100 Acres

47 acres of bush. South of 89 Hwy. Knoll for a home, hunting, no swamp. Beautiful piece of property. Call for directions. Asking \$89,000.



\$129,900

Huge lot in Glen Williams. 3 bedroom house with eat-in kitchen & potential - needs T.L.C. Town water, 100 amp service. Almost room for private golf course!



\$101,900

3 bedroom townhouse, eat-in kit. complete with dishwasher. Large MBR w/ensuite. Fin. rec room w/bar and adjacent powder room. Freshly decorated and fenced. 93-2-436

Please call for further information on these properties



KIM ROLLINGS
*Sales Representative

24 Hour Pager **874-3040**
24 Hour Pager **877-5165**

ARTHUR F. JOHNSON & ASSOCIATES LTD., REALTOR



JOAN ROLLINGS
*Sales Representative



RE/MAX® Suburban (91) Inc.

877-5211

Where the good Real Estate people are!
A Network of Independent Member Brokers

OPEN HOUSE



OPEN HOUSE - SUNDAY, AUG. 29 2:00 - 5:00 pm

Directions: Hwy 7 west of Georgetown (east of Acton) to 6th line south... Look for the Re/Max balloon!!

IN THE RAT RACE?

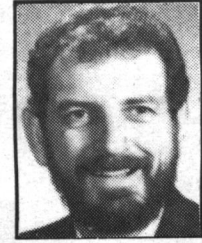
Be a winner by enjoying evenings and weekends in the Country. Retreat to your country home, just minutes from Georgetown & South of Hwy #7. This lovely home has a fireplace, large garage, fenced back yard & much much more, **and all for \$169,000.** Call Bruce Rodgers* or Donna Mason*. 877-5211 RM187-93



DONNA MASON
* Sales Rep.
24 Hr. Pager
877-5211



VACANT LOT - \$64,900
Lovely mature area to build your home - 40' x 160' lot on quiet street in Halton Hills, lots of trees. Call now Donna Mason*. RM206-93



BRUCE RODGERS
* Sales Rep.
24 Hr. Pager
877-5211



OPEN HOUSE BLITZ

SATURDAY, AUGUST 28 2 - 4 PM
64 Prince Charles St., Georgetown

Directions: Guelph St. south on Rexway, west on Prince Charles



FIRST TIME BUYERS DREAM - 3 + 1 bedrooms, 2 kitchens, 2 bathrooms, 2 living rooms, situated on an incredibly private lot. \$164,900. Makes home ownership affordable. 93-2-407

"Hope to see you at our Open Houses!"



LINDA ARMSTRONG
Sales Representative

SUNDAY, AUGUST 29 2 - 4 PM
9234 MISSISSAUGA RD.

Directions: Hwy #7 to Mississauga Rd. Go south to sign.



This country beauty is ideally located for commuters. Welcoming the large family, this house offers 4 bedrooms, 3 bathrooms, huge living & dining room & kitchen. At \$229,900 our ravine property is unique. 93-2-413

SOLD

ARTHUR F. JOHNSON & ASSOCIATES LTD., REALTOR

Performance Counts

Bus. (416) 877-5165
Res. (416) 873-3070
Tor. (416) 874-3040

Sutton GROUP

Betty Lou Clark

*Sales Representative

Bus. (519) 824-0044

Res. (519) 824-1591



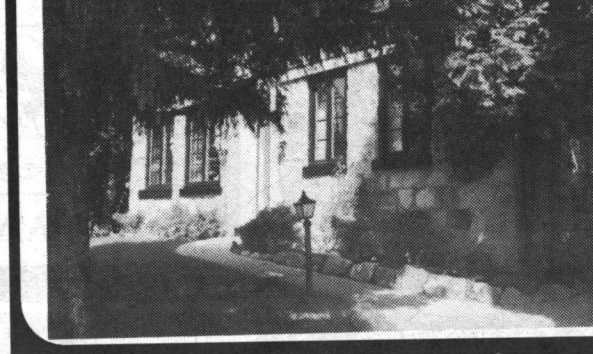
\$165,000 - PRICE ISN'T EVERYTHING!

This low price certainly doesn't reflect the idyllic natural setting or the move-in condition of this 1230 sq. ft. cedar side-split. Job transfer is the only reason for anyone to leave this spot. **Betty Lou Clark***, (519) 824-0044. SG-03



\$245,000 - THE CONVENIENCE OF ONE LEVEL LIVING...

Means no lugging recalcitrant 2 yr. olds upstairs or wincing from creaky knee joints coming down. Four bedrooms, two bathrooms makes for convenient family sharing. 2 1/4 acres of quiet countryside allows children to explore & enjoy - all within calling distance under towering shade trees. **Betty Lou Clark***, (519) 824-0044. SG-02



\$274,900 - IN PLAIN GOOD TASTE

Restoring any stone building that's been gracefully aging for 140 years requires a deft touch. Such is the case for this fine old gal. Some noteworthy details include gothic window above the centre front entry, casement windows, pine floors, 2 fireplaces & family room overlooking private back garden. South of Hwy. 401, west of Hwy. 6. **Betty Lou Clark***, (519) 824-0044. SG-04

sutton group ~ graystone realty inc., realtor
AN INDEPENDENT MEMBER BROKER