

ARTHUR F. JOHNSON & ASSOCIATES LTD., REALTOR

877-5165

Tor. 874-3040 Res. (519) 833-9578

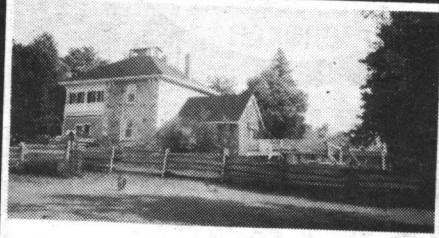
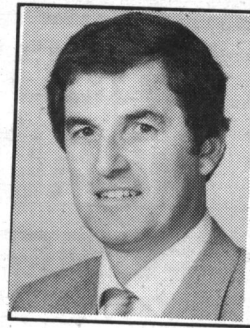
LARRY BARNSTAPLE

*Sales Representative

Providing Real Estate Services

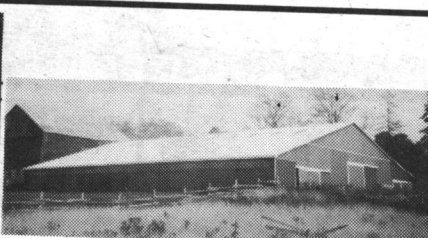
Since 1972

Let me bring Toronto, Mississauga, & Brampton to your home via Rogers Cable TV



HORSE FARM AND STONE HOUSE

On 89 acres, large bank barn, indoor riding arena, 38 stalls, stream, pond, 5 acres of bush. 93-2-485



NEW



25 ACRES

Trees, pond, fast flowing stream. Beautiful 4 bedroom post and beam with 3 room apartment, 2 large outbuildings. Call Larry Barnstaple* 877-5165 93-2-440



GEORGETOWN CHARMER

\$11,000 down. 4 bedrooms, log burning fireplace, exceptional rec room, fenced yard; in a classy neighbourhood. \$199,900. 93-2-247

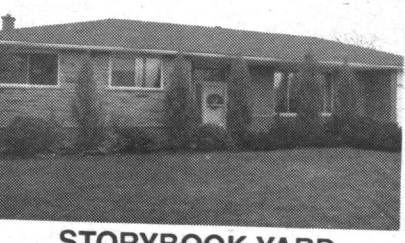


23 PRIVATE ACRES

Spring fed pond. Open meadow. Executive Cape Cod home with spacious family room addition with cathedral ceiling & stone fireplace situated to take advantage of the views. 5 stall insulated barn with paddocks. 93-2-115



\$499,000



STORYBOOK YARD

3 bedroom bungalow in one of Erin's better neighbourhoods. Gleaming hardwood floors, very private well treed back yard, Sunny kitchen and finished rec room. Asking \$179,900. 93-2-330



REDUCED

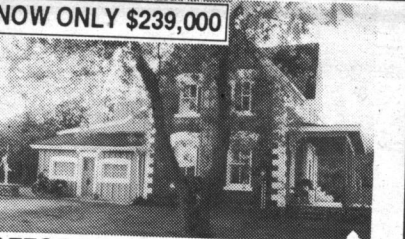
\$10,000 DOWN IT'S LIKE NEW

\$199,900. Exceptional 4 bedroom on pool sized lot - with the pool. Gleaming hardwood & broadloom. Beautiful rec room with log burning fireplace - must be viewed. 93-2-130



OLYMPIC ACHIEVEMENT

25 panoramic acres secluded from the road, 2 new baths, sunroom, large elevated patio, walkout basement - Very bright home. Stocked pond, workshops. 93-2-367



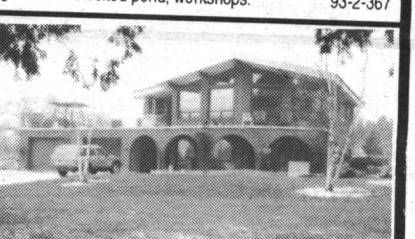
AFFORDABLE BRICK VICTORIAN

Privately tucked away on 4.5 acres yet minutes to town. Renovated oak kitchen with high ceilings and pine wainscoting. Recently constructed ensuite off large master bedroom. Charm & convenience. Call Larry* 874-3040. 93-2-325



HOME BUSINESS

\$279,000 lot of road frontage. 1.8 acres, south of Acton north of 401 8 minutes. 5 bedroom home, 3 baths, walkout basement, workshop, lots of trees. Call Larry* 874-3040. 93-2-359



NOW \$289,900 PARADISE IN ERIN

25 panoramic acres secluded from the road, 2 new baths, sunroom, large elevated patio, walkout basement - Very bright home. Stocked pond, workshops. 93-2-367



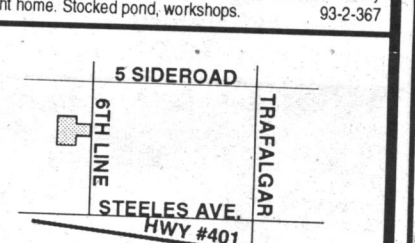
NEW PADDOCKS

47 acre panorama, 3 bedrooms, high on a hill, walkout on two levels, hot tub, rec room, huge insulated shop, fenced paddocks. Call Larry Barnstaple* 874-3040. 93-2-251



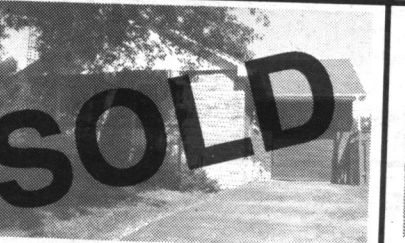
SPECTACULAR VIEWS

Custom built home with approx. 5,000 sq. ft. on the main floors, 10 ft. ceilings, cherry plank floors, walkouts to balcony deck, 4 spacious bedrooms, library, large studio, 57 acres of trees, hills & streams. 93-2-394



73 EXCEPTIONAL ACRES

Only 2 miles north of the 401. Rolling land, beautiful forest, workable lands, fantastic views, good road frontage. Call Larry 874-3040. 93-2-246



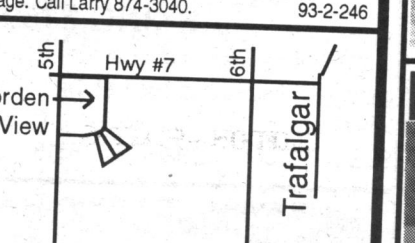
VIEW OF THE LAKE

\$155,900. Immaculate 3 bedroom, finished rec. room, office or den, two full baths, fenced yard. 93-2-405



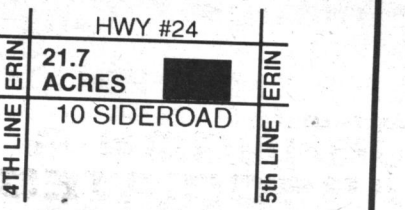
THE CHARM OF ROCKWOOD

The convenience of today - large lot, low maintenance exterior. Spacious oak eat-in kitchen and gas heating. Call Larry Barnstaple* 874-3040. 93-2-183



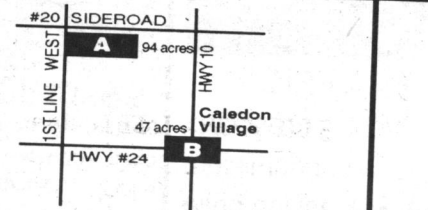
ESTATE LOTS 114,900

2 acre lots on paved road, ravine, trees, close to Georgetown "Go". Call Larry* 874-3040.



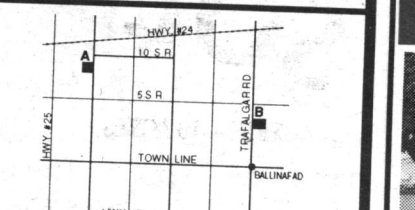
\$144,000 SECLUDED

21.7 acres, pond, stream, acres of trees, abundance of wildlife. Call Larry 877-5165. 93-2-336



OPPORTUNITIES

A. 94 acres of vacant land just north of Caledon Village. 75 acres workable some bush - Great location. Call Larry Barnstaple* 874-3040
B. 47 acres - Ideal for investment, adjacent to existing development and village of Caledon. Subdivision plan available. Call Larry Barnstaple* 874-3040.



LOTS OF LOTS

A - 3 acre building lot, 275' x 500' Asking \$99,900. Call Larry 874-3040
B - 1 acre building lot on paved road. \$79,900. Call Larry 874-3040

RE/MAX BLUE SPRINGS Realty (Halton) Corp.

SERVICE OF THE '90s!

Wayne will market your property on TWO Real Estate Boards with over 1500 sales reps or members at no additional cost to you!



Wayne Saunders *Sales Associate

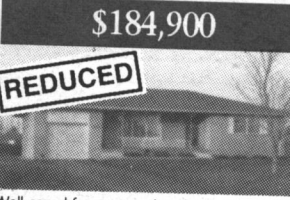
SERVICE OF THE '90s!

Wayne offers a written comprehensive market evaluation of your home at no cost to you!

BUS. (519) 856-4348 TOR. (416) 874-3053

FAX (519) 856-2128

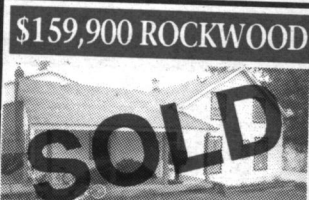
Wayne Sells Properties Just Like Yours!



\$184,900

REDUCED

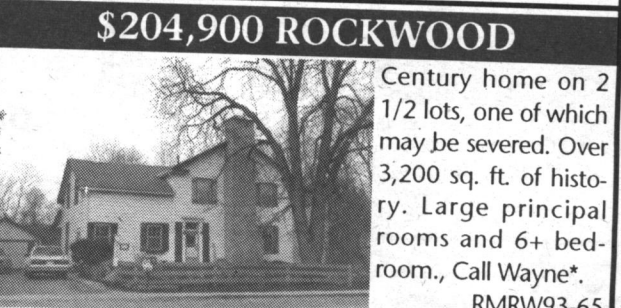
Well-cared for custom bungalow in mature village setting east of Rockwood. Additional workshop and garage for the hobbyist. New kitchen. Ideal for retirement or ? Call Wayne Saunders* RMRW93-49



\$159,900 ROCKWOOD

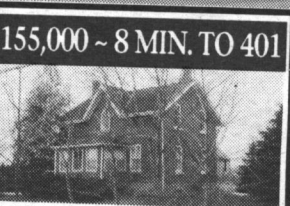
SOLD

This spacious updated Century Home offers all the modern conveniences with the charm of yesterday. A 2 minute walk from Rockwood Conservation park on a well treed & landscaped lot and having extensive rockeries & terraced grounds. A pleasure to view. Call Wayne* RMRW93-39



\$204,900 ROCKWOOD

Century home on 2 1/2 lots, one of which may be severed. Over 3,200 sq. ft. of history. Large principal rooms and 6+ bedroom. Call Wayne* RMRW93-65



\$155,000 - 8 MIN. TO 401

EDEN MILLS \$199,000

Solid brick 1800 sq. ft. home with character, just south of Guelph on over 1/2 acre. Attached garage has loft & storage. This property offers huge backyard, fruit trees, recent gas furnace & roof, original baseboards & trim. This lovely 3 bedroom home is a must to see. Call Wayne* RMRW93-67

Presently 2 residences (1 was built 5 years ago). This updated property has some commercial uses as well. Placed on a mature lot 78' x 132' and in a picturesque setting, near the River. Call Wayne for details. RMRW93-56



REDUCED \$229,900 JUST FOR YOU

This 4 year old home located 3 miles from Acton and 14 miles by Hwy. 25 to the 401 is placed on 4.86 acres of rolling land. A lovely mature setting with maples across the front and mixed bush to the rear and an 80 ft. pond. Open concept of 2x6 construction with R20 walls & R40 ceilings the home is tasteful & a pleasure to view. RMRW93-16

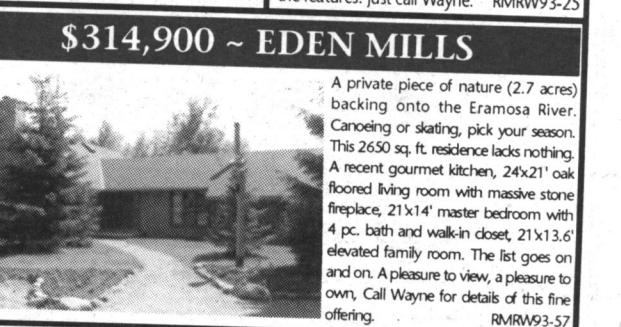


\$199,900 24 ACRES

\$195,500 - ROCKWOOD

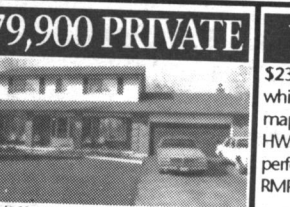
Contemporary home only 1 mile from Rockwood on a paved road, this property is sure to please. Some fencing, 20 acres in alfalfa & timothy, separate garage (insulated & heated) and a 3 bedroom home that needs T.L.C. Excellent potential for horses or...? Call Wayne* RMRW93-66

Custom-built with you in mind. 1750 sq. ft. of upgraded luxury in this 4-year-old 3 bedroom home. Cathedral ceilings, fireplace, family room & inground pool are a few of the features. Just call Wayne. RMRW93-25



\$314,900 - EDEN MILLS

A private piece of nature (2.7 acres) backing onto the Eramosa River. Canoeing or skating, pick your season. This 2650 sq. ft. residence lacks nothing. A recent gourmet kitchen, 24'x21' oak floored living room with massive stone fireplace, 21'x14' master bedroom with 4 pc. bath and walk-in closet, 21'x13.6' elevated family room. The list goes on and on. A pleasure to view, a pleasure to own. Call Wayne for details of this fine offering. RMRW93-57



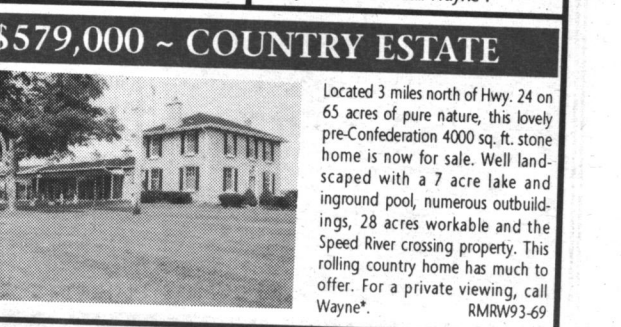
\$279,900 PRIVATE

2.6 acres only 20 minutes to the 401 or 10 minutes east to Guelph. 24 x 32 ft. 4 year old workshop, central air, 4 bathrooms, in-law suite in basement with full walkout, 5 bedrooms, family room with fireplace, den with fireplace, plus a huge deck. This 12 year old custom built quality 2600 sq. ft. home has it all! RMRW93-01

VACANT LAND

\$234,900. Lovely 46 acre parcel, 30 of which is workable. Located on a paved maple-lined road 1 1/2 miles north of HWY 7 and just west of Acton. Picture perfect with numerous building sites. RMRW93-17

\$154,000. 22.8 Acres of potential! Rolling land with 10 acres of bush, 4 acres are hardwood and approx. 12 acres of worked land. Very secluded & private. Your plans or ours? Call Wayne* RMRW93-69



\$579,000 - COUNTRY ESTATE

Located 3 miles north of Hwy. 24 on 65 acres of pure nature, this lovely pre-Confederation 4000 sq. ft. stone home is now for sale. Well landscaped with a 7 acre lake and inground pool, numerous outbuildings, 28 acres workable and the Speed River crossing property. This rolling country home has much to offer. For a private viewing, call Wayne* RMRW93-69

*MEMBER OF THE GUELPH & DISTRICT REAL ESTATE BOARD AND THE BRAMPTON REAL ESTATE BOARD TO SERVE YOU BETTER!