

# "PERFORMANCE COUNTS!"

**SOLD**

ARTHUR E. JOHNSON & ASSOCIATES  
REALTORS

**877-5165**

24-Hour Pager

**877-5165**

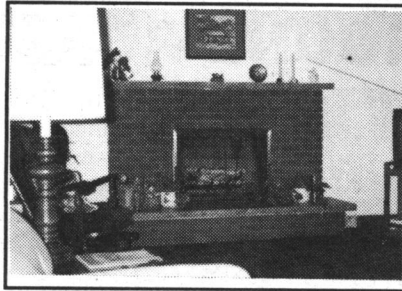
Tor. 874-3040

Res. 877-7578

Feature Home of the Week



**BRENDA PAYTON**  
\* Sales Representative



FORMAL LIVING ROOM WITH FIREPLACE & PANORAMIC VIEWS



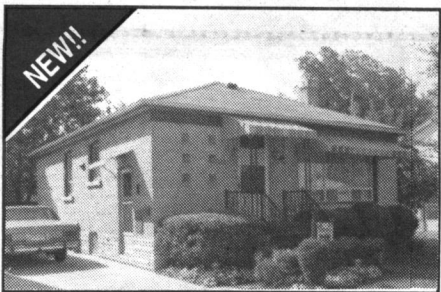
HOLLYWOOD STYLE KITCHEN WITH WALK-OUT TO DECK



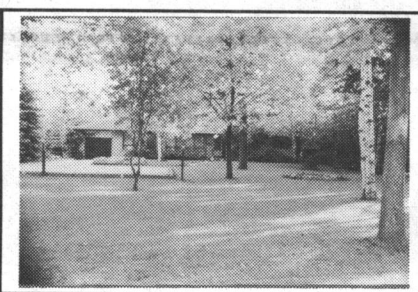
SPACIOUS FAMILY ROOM WITH FIREPLACE AND 2ND BATH



PRIVATE DECK OFF MASTER BDRM & FOREST SETTING



2 BDRM. IN LAW - TOTALLY UPGRADED...BETTER HURRY!



3 BDRM. BRICK ON CREDIT RIVER - PRIVATE PARKLAND



**\$148,900**

3 BEDROOM, FIREPLACE COUNTRY LOCATION!!

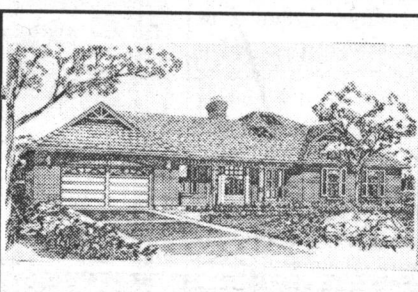


**\$299,900**

3800 SQ. FT. VICTORIAN ON 4.5 ACRES 5 BDR. - 2 MAIN FLOOR FAMILY ROOMS!



\$209,900 COUNTRY SQUIRE WITH INGROUND POOL!



BUILD YOUR OWN HOME ON GORGEOUS LOT SOUTH OF ERIN. 1800 SQ. FT. BUNG. \$269,000!



Call for a complete and accurate market analysis of your home!

# "PERFORMANCE COUNTS!"

Not intended to solicit properties already listed for sale

## Hydro introduces "No Surprises Payment Plan"

By Oksana Buhel

A "No Surprises Payment Plan," promoted by Halton Hills Hydro-Electric Commission, promises predictable hydro-water bills and savings, but customers must take advantage of the plan by the end of August.

The program is based on a time payment plan, in which customers' annual hydro bill will be divided into 11 equal installments, and the twelfth payment will be a balancing one. Gerry Trudell, general manager of the commission, explained some customers may actually receive credit or money if the first 11 payments surpass their annual bill. The amount of the installments will be based on the customer's previous yearly bill.

Murt Allison, chair of the commission, describes the program as a "considerable advantage." Since the installments will be taken directly out of the customer's chequing account, money will be saved in postage and the elimination of late payment penalties.

The hydro commission will save money by lowering administration costs and collection costs.



Murt Allison



Gerry Trudell

Currently, almost 20 per cent of residential customers are on the program, and Trudell hopes this number will be increased to 50 per cent.

He added another commendable aspect of the program was the local participation in the promotional effort. "We're especially proud of the fact that the entire promotional effort was conceived, developed and produced right here in the community," Trudell said.

**Program described as "a considerable advantage"**

Lucinda Landau, planning consultant for Richard Creative in Halton Hills, worked with the commission to establish the program.

Customers interested in the "No Surprises Payment Plan" are asked to call Halton Hills Hydro, at 853-3700.

## JUST ARRIVED

# POSTUREPEDIC HOTEL/MOTEL

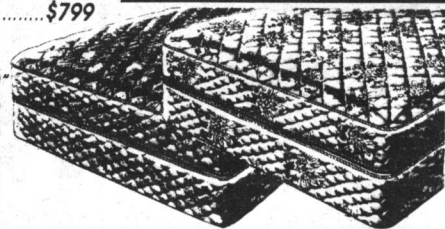
COAST TO COAST

# SALE

From **\$369** twin set

Posturepedic HOTEL "200"  
Full set ..... \$469  
Queen set ..... \$499  
King set ..... \$799

Posturepedic HOTEL "500"  
Twin set ..... \$399  
Full set ..... \$529  
Queen set ..... \$599  
King set ..... \$899



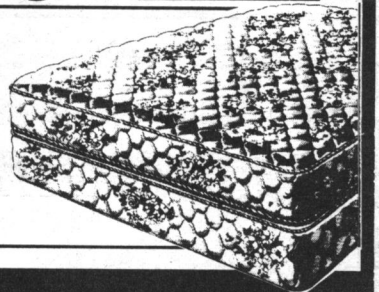
Posturepedic HOTEL "700"  
Twin set ..... \$499  
Full set ..... \$599  
Queen set ..... \$699  
King set ..... \$999

**LIMITED TIME OFFER**

## EVERY SEALY™ MATTRESS ON OUR FLOOR REDUCED 50% and MORE!

Includes premium quality merchandise with advanced PostureLux™ coil design.

Sealy™ bedding starts at only **\$249** twin set  
Sealy "CENTURY"  
Full set ..... \$299  
Queen set ..... \$349



Country Mattress Sleep Shop

**452-9820**

HOURS: MON-TUES 10-6  
WED-FRI 10-9, SAT 10-5  
190 Hwy. #7 West, Unit #5 Brampton  
(Rice Business Centre)

