

# Tough Turner takes beef tax-bite

**THE CARPET BARN**  
DIVISION OF HALTON FLOOR FASHIONS LTD.  
877-9896  
877-1666  
26 Guelph Street  
Georgetown, Ont.

Halton-Peel MP Garth Turner, Minister of National Revenue, has advised that the tariff rate quota of 48,014 tonnes of boneless beef announced in a government news release on June 21, has now been reached.  
A 25 percent ad valorem surtax on imports of boneless

beef, as recommended by the CITT, and agreed to by the Government of Canada, will apply immediately until Dec. 31, 1993, now that the tariff rate quota has been filled. Boneless beef shipments in transit to Canada prior to June 21 are exempt from the surtax.

countries other than the United States.



Garth Turner

Mr. Turner said, "The tariff quota of 48,014 tonnes was reached this week. Therefore, to offset the threat of injury to Canadian producers of beef, effective immediately, I have instructed Customs to ensure that the 25 per cent surtax is collected on all boneless beef imports other than those originating in the United States."

The implementation of this measure follows the CITT inquiry on the effects of boneless beef imports on Canadian producers. The CITT report, which was

tableted in Parliament on June 1, concluded that there is a threat of serious injury to Canadian beef slaughterers, deboners and cattle producers. The report recommended that a tariff surtax of 25 per cent be applied to such imports exceeding 48,014 tonnes in the period from May 1 to December 31, 1993, and 72,021 tonnes for each of 1994 and 1995. The CITT recommendation was designed to deal with this threat of injury without imposing an absolute quantitative restriction on imports.

**Family OPTICAL**

- Designer Eyewear
- Contact Lenses
- Quality Service

Eye Examinations Arranged

**WE MATCH OUR COMPETITORS PRICES... AND FAST!**

232 Guelph St. Georgetown  
Guelphview Square (corner of Guelph & Mountainview) 873-3050

## Milton youth charged after Steeles Avenue car fatality

Brent Pickett of Milton, was charged Tuesday with careless driving, following the June 17 car accident on Steeles Ave. which killed 31-year-old Susan Warnaar of Brampton.

Pickett's car, travelling eastbound, just east of Ninth Line, strayed in to the westbound lane, and struck Warnaar's vehicle head-on.

Pickett will appear in Milton Provincial Court Aug. 16, at 9 a.m.

## Ramautarsingh appointment

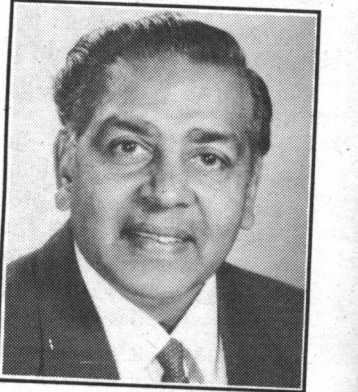
The Ontario Council of Regents for Colleges of Applied Arts and Technology has appointed Tom Ramautarsingh to the 20 member Prior Learning Assessment Advisory and Coordinating Group.

This Group will provide policy, funding advice, planning and the coordination of PLA training and marketing relevant to prior learning assessment.

The PLA Group's mandate also includes responsibility for monitoring and evaluating the colleges' experience with prior learning assessment and providing the Minister of Education and Training with an annual report in this regard.

Prior Learning Assessment is a process using a series of tools, which assist learners to reflect, identify, recognize, articulate and demonstrate past learning in order to have it measured, compared to some standard and in some way acknowledged by a credentialing body.

It is based on the premise that adults acquire skills and knowledge through many



Tom Ramautarsingh

means of formal or informal study. For Ontario Colleges of Applied Arts and Technology, a PLA system evaluates this learning and relates it to courses and programs for the purpose of granting college credit. PLA will facilitate lifelong learning, make colleges more accessible to groups which have been under-represented in the past and increase the efficiency of the colleges by eliminating the need for unnecessary retraining.

Ramautarsingh, who has served at all levels in the education field said, "It is a great opportunity to serve Ontarians in an area which needs some focusing and action in meeting the present day needs of citizens at the college level."

AS ADVERTISED ON T.V.!!

Come and visit the area's largest selection of upholstered living room suites. MANY styles and fabrics to choose from, all priced to put a smile on your face during our...

**Summer Festival of Savings**

LOCALLY OWNED AND OPERATED

Experience the warmth of country living with this durable set. Constructed of solid hardwood with no-sag springs and a nylon covering. A variety of colours are available and quick delivery is assured.

**SOFA, LOVESEAT & CHAIR ONLY \$899**

Contemporary styling highlights this Canadian made suite. The pillowback design offers incredible comfort and value.

**SOFA & LOVESEAT ONLY \$899**

Put your feet up and RELAX. This Canadian made sofa and loveseat features two recliners in each piece. WOW!

**SOFA AND LOVESEAT ONLY \$1299**

This luxurious sofa and loveseat features a sculpted hardwood frame, no-sag springs and distinctive "Southwest" style fabric.

**SOFA ONLY \$599**

3 PC. COFFEE AND END TABLES from **\$149**

WINGBACK CHAIRS from **\$199**

QUEEN SIZE MATTRESS AND BOX SPRING from **\$199**

FAST DELIVERY • FREE LAYAWAYS • EASY PAYMENT PLANS • 100% SATISFACTION

WE SERVICE EVERYTHING WE SELL

**ONTARIO CHESTERFIELD WHOLESALERS**

725 MAIN ST. E. MILTON (ACROSS FROM COPELAND LUMBER)

876-4433

MON. - WED 10-6  
THURS. & FRIDAY 10-9  
SATURDAY 10-6  
SUNDAY CLOSED

• ERIE ST. STRATFORD (519) 271-4488 3 LOCATIONS TO SERVE YOU • GUELPH AUTO MALL (519) 763-4477

**Tooth Chatter**  
by ALEX TRENTON, Denture therapist

### NEW DENTURES CAN ERASE WRINKLES

Vertical wrinkles around the mouth may be caused by ill-fitting dentures. False teeth that may once have fit well, change considerably as time goes by. When no teeth are present, the gum and bone tissue become unnecessary and nature removes them. They shrink upward, therefore causing the cheeks to sag. Wrinkling and gauntness in the face are two things you must deal with as you grow older, but old or ill-fitting dentures can be responsible for some of these lines.

Because your gums are constantly shrinking, you must update and change your denture regularly, in order to keep them fitting snug, which fills out the face, therefore smoothing out wrinkles. The unattractive appearance is not the only problem with poor fitting dentures. The incorrect bite often causes discomfort or pain. Ear and jaw joint pain, soreness in opening the mouth and headaches are caused by poor fitting teeth. This pain can produce a constant tenderness in the facial muscles, which in turn can contribute to a premature drawn, aged look.

It is very important to have your dentures checked on a regular basis.

**WE CARE ABOUT YOUR SMILE!**

A.W. Trenton D.T.,  
The Denture Clinic, 19 Church St.,  
Georgetown, Ont. L7G 2A5  
(416) 877-2359

**SMOKE ALARMS SAVE LIVES**

**Ginny's DIAPER SERVICE**

Only **\$12.95** per week

Keeps your Little One happy in 100% Cotton professionally cleaned Diapers, picked up and delivered twice per week!

We also carry Nikky Pants, breast feeding aids, toilet training pants, etc.

Call for more information: **877-0950**