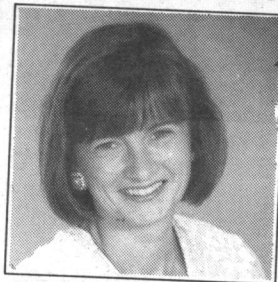


PROVEN PERFORMANCE
 ARTHUR F. JOHNSON & ASSOCIATES LTD., REALTOR
SOLD

MARTHA SUMMERS'

877-5165 874-3040
 Tor.
 833-9714 873-0655
 Erin Res.



MARTHA SUMMERS
 Sales Representative*

NEW!
\$279,000



CAN YOU SEE THE POND?

Keep looking. This is an immaculate home and property on 5 acres. Quality stone work, inside and out. Great family home with all the conveniences. Move in and enjoy.
 93-2-410

NEW!
\$359,900



CARSON REID CUSTOM HOME

Complete with indoor pool and inlaw suite presently operating as a bed and breakfast. All on 32 country acres on paved road north of Rockwood.
 93-2-411

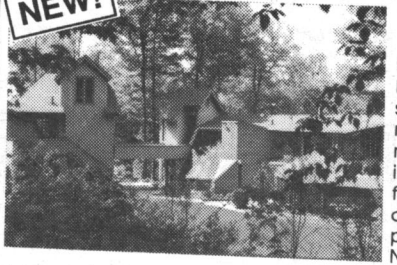
NEW!
\$599,000



VICTORIAN CHARM - ERIN

The work has been done, the charm remains on 47+ acres with barn, pond and bush. Good size rooms with character retained. 5 bedrooms for all your family needs.
 93-2-new

NEW!



LISTEN TO THE LEAVES

Nestled amongst the hardwood bush, this spacious contemporary home brings nature indoors. There is even a walkout from the ensuite complete with fireplace, to a balcony. Not to be missed.
 92-2-new

\$759,000



COUNTRY CLASSIC

5 fireplaces, 2 storey atrium, 80 acres with pond, stream, bush, and meadow. A bank barn completes the picture. Ultimate country living.
 93-2-332

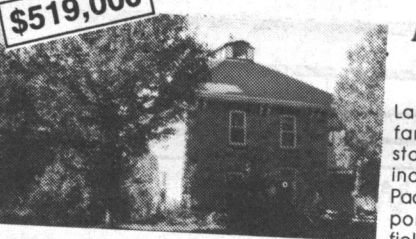
\$329,000



ERAMOSIA - 24 ACRES

Dining room with fireplace, oak kitchen with skylight, vaulted ceilings, large windows overlooking pond with long views. Greenhouse plus screened in porch.
 93-2-305

\$519,000



ERIN - 84 ACRE HORSE FARM

Large century stone farmhouse, 38 box stall and a super indoor arena. Paddocks, spring fed pond, stream and fields complete the setting.
 92-2-485

\$178,500



COUNTRY VALUE 3.3 ACRES

300 feet frontage on paved road. Open concept, vaulted ceilings, sunroom, large bedrooms with walkouts, full ensuite, main floor laundry. One level living south of Erin Village.
 93-2-260

\$244,900



CALEDON EHS SOUTH OF KING ST.

Backs onto a ravine. Bright and spacious, bleached oak kitchen, hardwood floors, finished loft.
 92-2-495

\$469,000



PARK-LIKE SETTING

10 acres with mature hardwood bush, fabulous lawns and gardens with custom executive home overlooking spring fed pond. Quality is evident throughout. Situated on a private road south of Erin Village.
 93-2-339

\$224,900



WHAT A DEAL!

Complete hobby farm, ready-to-move-into house is great, barn is great, paddocks are great, pond is great, bush is great. Anything else you need??
 93-2-271

REDUCED \$119,000



SUPER STARTER ACTON

Spacious bright eat-in kitchen, living and dining room. 2 bedrooms - all squeaky clean. On ground pool ready to use.
 93-2-358

\$249,000



ERIN 10 ACRES

Good location, 3 bedroom, open concept with lovely views of property. Finished rec room, 24 x 40 barn or workshop.
 92-2-275

\$149,000



FABULOUS RAVINE LOT

Upgraded with new kitchen with ceramics, new windows, upgraded bathroom with jacuzzi. Detached garage. What a great start.
 93-2-322

\$319,000



GEORGETOWN INCOME PRODUCING

Well maintained in good location. Separate large 2 car garage, plenty of parking. Adjacent corner lot available at \$99,900. 93-2-266



EXECUTIVE REQUIREMENT??

Caledon, south of King St. 20 treed acres. Superb home with bright spacious principal rooms. Dining room complete with fireplace. Multi-sided living room.

Halton to get training cash

By Stephanie Henderson
Special to HHTW

Pre-employment training courses under the jobsOntario Training program could soon be available in Halton.

Halton region has chosen Sheridan College, the Halton Board of Education and other local agencies to provide seven provincially funded programs and services for the local population, at a total cost of \$707,530.

The region was allotted \$720,000 to operate such programs, based on 100 per cent funding.

Regional councillors are expected to approved a report tomorrow outlining the contract arrangements. The services, which include resume writing, computer skills for the office and industry, career planning, and one course specifically related to the hospitality and service industries, were chosen after consultation with individual registrants and Halton employers, says Bonnie Ewart, the region's commissioner of social services.

Pre-employment training is provided to individuals whose work skills no longer match what is required in today's job market.

The program is slated to begin in early July and will continue until next March. As many as 350 people could receive training assistance during that period, said a representative of the region's social services department. A maximum of \$12,470 can be used for each participant. About 1,000 people have already expressed interest in the program.

Eligibility for jobsOntario Training is the same as that for the jobsOntario employment program, which has placed 301 Halton residents in jobs since last fall.

The number of individuals receiving general welfare assistance in Halton has climbed steadily since January and was 14 per cent higher in May of this year compared to May of 1992. More than 70 per cent of all recipients from January to May of this year were considered employable.

Leathertown Festival nears

The Halton Hills Tourism Committee is promoting the second annual Leathertown Festival on Sunday, Aug. 3 from 11 to 5 p.m. The whole community is invited to participate!

Tour the town on the popular double decker bus and learn its history through the colorful commentary scripted by Hartley Coles.

Visit the craft sale (juried, to provide only quality hand-made crafts) where you'll discover beautiful leather boxes and belts, woven belts and ponchos, porcelain and leather jewelry, attractive decorative baskets and other crafts too numerous to mention! Organizers are still accepting applications for the craft sale. Interested craftspeople can pick up an application at Wetherby's in Acton or call 519-

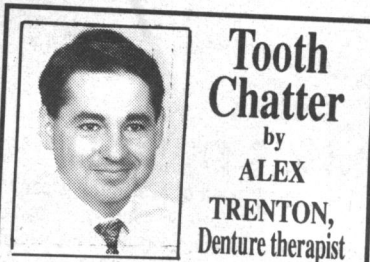
853-1633 (daytime); 519-853-0239 (evening).

Continuing performances by community groups can be viewed on the stage on Fellows St., with introductions provided by M.C.,

councillor Gerald Rennie. In between the jazz dancers', square dancers' and cloggers' performances, you'll be entertained by Acton Citizen's Band. If your group is interested in performing, please register at Wetherby's.

And of course, when you think of a Festival, you think of food! Community groups are welcome to set up bake sales and food booths to help round out the menu of the Acton Rotary Club's corn and hot dog roast. Please register at Wetherby's.

The Festival will be held in the olde Hide House parking lot (Highway 7 and Eastern Avenue) and on Fellows St. which will be closed to traffic. Downtown merchants are encouraged to participate by staying open and staging sidewalk sales, promoting in-store specials, providing sidewalk lunch specials, contests, etc. The bus will bring patrons downtown. Come and support your community, it's still worth the drive to Acton!



Tooth Chatter
 by
ALEX TRENTON,
 Denture therapist

NEW!
LAVEDENT DENTURE CLEANSER

Cleansing with "LAVEDENT"

As LAVEDENT concentrate is added to water, special agents within the cleanser automatically adjust water hardness and soften the water being used. As soon as enough concentrate has been added (1 to 2 capfuls per 8 ozs. of water), the solution is active. As the denture is immersed, the solution immediately begins to dissolve plaque (tartar), and removes debris and odor. Other special agents allow LAVEDENT to penetrate and clean even the smallest cracks and crevices. While LAVEDENT works within the pH range necessary to remove plaque, it is not a strong oxidant or bleach and, therefore, can safely be used on any dentures with soft linings or metal attachments.

LAVEDENT has so many distinct advantages over other denture cleansers. Its regular use makes sense because you will always be assured of having a completely clean, odor-free, fresh denture.

LAVEDENT is not available in stores, but it can be purchased at our office.

WE CARE ABOUT YOUR SMILE!

A.W. Trenton D.T.,
 The Denture Clinic, 18 Church Street,
 Georgetown, Ont. L7G 2A5
 (416) 877-2359

NOW OPEN

Micro Electronique

invites you to visit

our **LARGER location**

in **Shoppers World**
 (across from KMart)

Micro Electronique
 Shoppers World, Brampton

459-2899