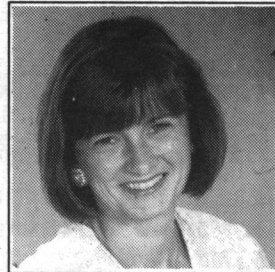


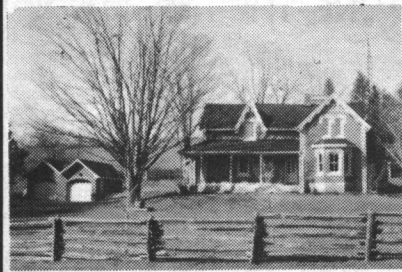
**PROVEN PERFORMANCE**  
ARTHUR F. JOHNSON & ASSOCIATES LTD. REALTOR  
**SOLD**

**MARTHA SUMMERS'**

877-5165 874-3040  
Tor.  
833-9714 873-0655  
Erin Res.



**MARTHA SUMMERS**  
Sales Representative\*



**COUNTRY CLASSIC**

5 fireplaces, 2 storey atrium, 80 acres with pond, stream, bush, and meadow. A bank barn completes the picture. Ultimate country living.



**PARK-LIKE SETTING**

10 acres with mature hardwood bush, fabulous lawns and gardens with custom executive home overlooking spring fed pond. Quality is evident throughout. Situated on a private road south of Erin Village.



**FABULOUS RAVINE LOT \$149,000**

Upgraded with new kitchen with ceramics, new windows, upgraded bathroom with jacuzzi. Detached garage. What a great start.



**SUPER STARTER ACTON \$129,000**

Spacious bright eat-in kitchen, living and dining room. 2 bedrooms - all squeaky clean. On ground pool ready to use.



**SUPERB CALEDON EXECUTIVE**

A must to see inside, spacious and gracious with hardwood floors, 25' dining room with fireplace, 4 bedrooms and a great country kitchen. A 20 acre wooded wonderland.



**ERAMOSA - SUPERB 24 ACRES \$329,000**

Large principle rooms, overlooking spring-fed pond. Greenhouse, workshop, meadow and bush.



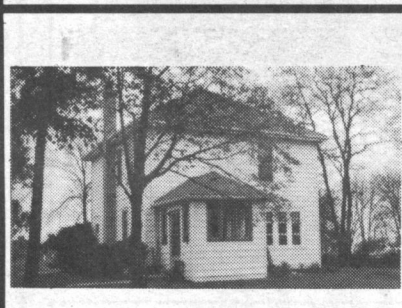
**ERIN - 84 ACRE HORSE FARM**

\$519,000 includes large century stone farmhouse, 38 box stall and a super indoor arena. Paddocks, spring fed pond, stream and fields complete the setting.



**COUNTRY VALUE 3.3 ACRES**

300 feet frontage on paved road. Open concept, vaulted ceilings, sunroom, large bedrooms with walkouts, full ensuite, main floor laundry. One level living south of Erin Village. \$178,500.



**CALEDON EHS REDUCED \$244,900**

Backs onto a ravine. Bright and spacious, bleached oak kitchen, hardwood floors, finished loft.



**LISTEN TO THE LEAVES**

Nestled amongst the hardwood bush, this spacious contemporary home brings nature indoors. There is even a walkout from the ensuite complete with fireplace, to a balcony. Not to be missed.



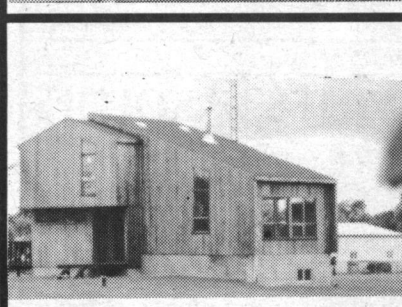
**WHAT A DEAL! \$224,900**

Complete hobby farm, ready-to-move-into house is great, barn is great, paddocks are great, pond is great, bush is great. Anything else you need??



**GEORGETOWN STARTER \$154,900**

Fabulous mature 339 foot deep lot, charming 3 bedroom home with character.



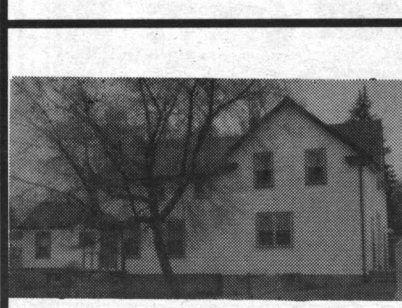
**ERIN 10 ACRES \$249,000**

Good location, 3 bedroom, open concept with lovely views of property. Finished rec room. 24 x 40 barn or workshop.



**VICTORIAN CHARM - ERIN**

The work has been done, the charm remains on 47+ acres with barn, pond and bush. Good size rooms with character retained. 5 bedrooms for all your family needs.



**GEORGETOWN INCOME PRODUCING \$319,000**

Well maintained in good location. Separate large 2 car garage, plenty of parking. Adjacent corner lot available at \$99,900.



**EXECUTIVE HOME + LOCATION**

29 private acres with mature bush, stream and open meadow, cedar sunroom with woodstove, hot tub, formal dining room.

**RE/MAX BLUE SPRINGS Realty (Halton) Corp.**

**SERVICE OF THE '90s!**  
Wayne will market your property on TWO Real Estate Boards with over 1500 sales' reps or members at no additional cost to you!



**SERVICE OF THE '90s!**  
Wayne offers a written comprehensive market evaluation of your home at no cost to you!

BUS. (519) 856-4348  
TOR. (416) 874-3053

Wayne Saunders  
\* Sales Associate

FAX (519) 856-2128

**Wayne Sells Properties Just Like Yours!**

**\$319,000 ~ ROCKWOOD**



on a double lot backing on to Grand River Conservation this custom built 3800 sq. ft. home features a 4 car Garage, 2 Bedroom in-law suite, heat pump, solarium (2 story) and a master suite with all comforts. Priced below builder's cost. Call Wayne\*. RMRW93-32

**\$195,500 ~ ROCKWOOD**



Custom-built with you in mind. 1750 sq. ft. of upgraded luxury in this 4-year-old 3 bedroom home. Cathedral ceilings, fireplace, family room & inground pool are a few of the features. Just call Wayne. RMRW93-25

**\$289,000 JUST FOR YOU**



16.5 Scenic acres 3 miles north of Hwy. 24 on a maple-lined paved road. Featuring a 12 year-old custom built quality home. Approx. 13 acres workable and a steel, insulated and heated workshop with large door access. This property shows a "10". Call Wayne Saunders\*. RMRW93-55

**\$184,900 ~ HISTORIC**



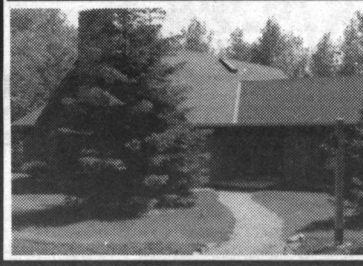
It started in 1873 as a country school house located just east of Rockwood off Hwy. 7. This historic, renovated home is now for sale. Placed on .8 acre and featuring 3+ bedrooms, country kitchen, main floor laundry, cathedral ceilings and much more! Just call Wayne. RMRW93-26

**EDEN MILLS \$199,000**



Presently 2 residences (1 was built 5 years ago). This updated property has some commercial uses as well. Placed on a mature lot 78' x 132' and in a picturesque setting, near the River. Call Wayne for details. RMRW93-56

**\$314,900 - EDEN MILLS**



A private piece of nature (2.7 acres) backing onto the Eramosa River. Canoeing or skating, pick your season. This 2650 sq. ft. residence lacks nothing. A recent gourmet kitchen, 24'x21' oak floored living room with massive stone fireplace, 21'x14' master bedroom with 4 pc. bath and walk-in closet, 21'x13.6' elevated family room. The list goes on and on. A pleasure to view, a pleasure to own. Call Wayne for details of this fine offering. RMRW93-57

**\$225,000 ~ HOBBY FARM**



20 acres located just 5 miles north of Hwy. 24. This spacious property offers approx. 3 acres of bush, a large pond and a secluded 2180 sq. ft. 2 storey home only 19 years old. Included is a 35 x 25 block & steel barn. Just call Wayne. RMRW93-27

**\$234,900 JUST FOR YOU**



This 4 year old home located 3 miles from Acton and 14 miles by Hwy. 25 to the 401 is placed on 4.86 acres of rolling land. A lovely mature setting with maples across the front and mixed bush to the rear and an 80 ft. pond. Open concept of 2x6 construction with R20 walls & R40 ceilings the home is tasteful & a pleasure to view. RMRW93-16

**\$189,900**



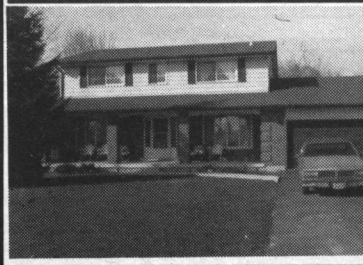
Well-cared for custom bungalow in mature village setting east of Rockwood. Additional workshop and garage for the hobbyist. New kitchen. Ideal for retirement or ? Call Wayne Saunders\*. RMRW93-49

**\$159,900 ROCKWOOD**



This spacious updated Century Home offers all the modern conveniences with the charm of yesteryear. A 2 minute walk from Rockwood Conservation park on a well treed & landscaped lot and having extensive rockeries & terraced grounds. A pleasure to view. Call Wayne\*. RMRW93-39

**\$279,900 PRIVATE AND PRETTY**



2.6 acres only 20 minutes to the 401 or 10 minutes east to Guelph. 24 x 32 ft. 4 year old workshop, 400 amp service, central air, 4 bathrooms, in-law suite in basement with full walkout, 5 bedrooms, family room with fireplace, den with fireplace, plus a huge deck. This 12 year old custom built quality 2600 sq. ft. home has it all! RMRW93-01

**\$279,500**



On a Maple-treed acre east of Rockwood & just off Hwy. 7. Custom home offering 4 bedrooms, cedar Florida room with hot tub, fireplace in family room, and a bunch more. Two workshops with heat & hydro & the larger being 32' x 40' insulated, floor drains, and set up for large trucks. Just call Wayne\*. RMRW93-37

**VACANT LAND**

\$234,900. Lovely 46 acre parcel, 30 of which is workable. Located on a paved maple-lined road 1 1/2 miles north of HWY 7 and just west of Acton. Picture perfect with numerous building sites. RMRW93-17

\$154,000. 22.8 Acres of potential! Rolling land with 10 acres of bush, 4 acres are hardwood and approx. 12 acres of worked land. Very secluded & private. Your plans or ours? Call Wayne\*.

**\*MEMBER OF THE GUELPH & DISTRICT REAL ESTATE BOARD AND THE BRAMPTON REAL ESTATE BOARD TO SERVE YOU BETTER!**