

# "PERFORMANCE COUNTS!"

**SOLD**

**877-5165**

Tor. 874-3040  
Res. 877-7578

ARTHUR J. JOHNSON & ASSOCIATES LTD. REALTOR

**877-5165**

24-Hour Pager

See these LISTINGS inside and out!

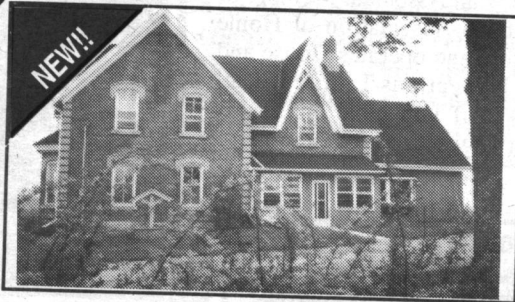


**BRENDA PAYTON**  
\* Sales Representative



**\$213,000**

**OPEN HOUSE: 22 James St., Geo.**  
Sunday, June 13 2:00 - 4:30

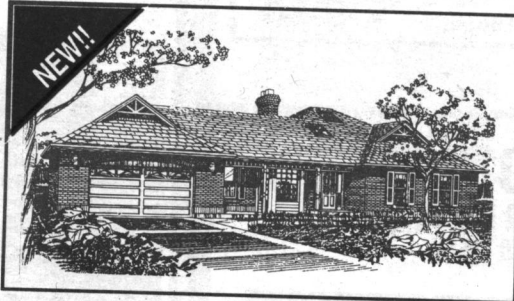


**VICTORIAN - 4.5 ACRES**

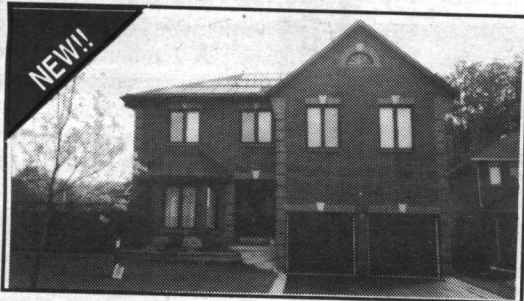


**\$289,000**

**RIVER LOT & BUNGALOW**



**BUILD YOUR OWN - \$269,000**



**STONEGATE - 3,500 SQ. FT.**



**\$209,900**

**MAIN FLR. FAMILY RM - 4 BDRMS.**



**GLEN WILLIAMS \$219,900**



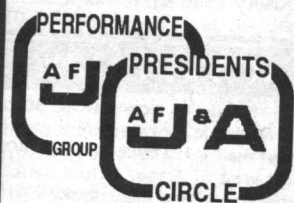
**\$179,900 REDUCED TO SELL!**



**\$209,000 CUDDLE BY THE FIRE**



**\$259,900 "HEART LAKE"**



Call for a complete and accurate market analysis of your home!

CALL BRENDA PAYTON

# "PERFORMANCE COUNTS!"

Not intended to solicit properties already listed for sale

# T. T. Skov

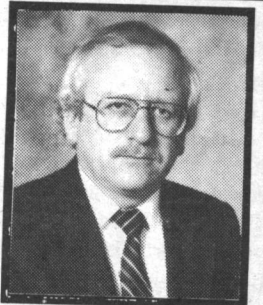
**Real Estate Ltd.**

292 STONE ROAD W. GUELPH

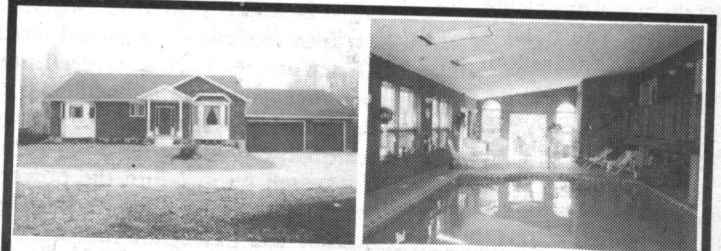
**519-822-8631**



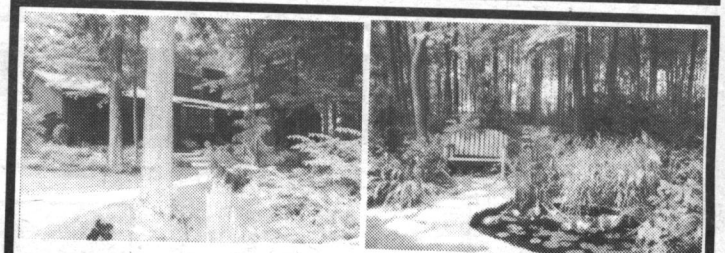
Sylvia Bhend  
Associate Broker



Patrick Hanlon  
Associate Broker



**ENJOY THE GOOD LIFE** - On this private and treed 32 acre oasis minutes north-east of Guelph. This nearly new 3488 sq. ft. ranch bungalow features 3 bedrooms, great room with vaulted ceiling, 19'x28' indoor pool, triple garage. Finished 2 bedroom guest apartment. This home is suitable for a wonderful family home or perhaps for a Bed and Breakfast operation. For details, please call SYLVIA BHEND or PATRICK HANLON (519) 822-8631.



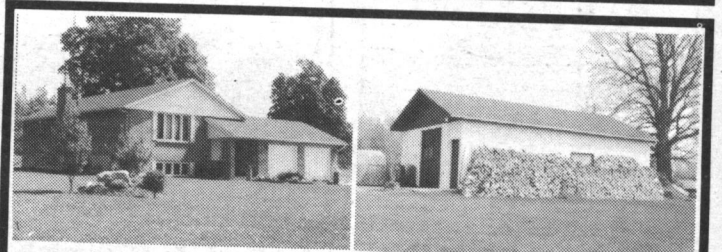
**\$339,900 - ONE OF A KIND** - Escape to the cottage without leaving the city! Eight year old ranch bungalow on double treed lot in Guelph is truly in harmony with nature. Three bedrooms, open concept kitchen-living-dining areas with cathedral ceiling, sunken family room with fireplace, finished basement with English Pub. 4th bedroom down, whirlpool tub for 4 and more! VERY PRIVATE! PRIME LOCATION! LENGTHY LIST OF FEATURES! Call SYLVIA BHEND or PATRICK HANLON (519) 822-8631.



**\$234,900 PRIVATE YARD WITH GAZEBO** - Bold 2250 sq. ft. design, main floor master bedroom with ensuite plus 3 bedrooms up, sunken living room with see through fireplace to dining room, 2 storey family room with hardwood flooring. A beautiful executive home in Rockwood! Call SYLVIA BHEND or PATRICK HANLON (519) 822-8631.



**\$214,500 - INVERHAUGH AREA** - Conveniently located to Guelph, Elora and Elmira on 1/2 acre. Five years old, 3 bedrooms, country sized kitchen, dining room, large family room and double garage. LONG LIST OF FEATURES - MUST BE SEEN! Please call SYLVIA BHEND or PATRICK HANLON (519) 822-8631.



**\$279,000 - COUNTRY RETREAT** - Beautifully appointed 4 year old raised bungalow with attached double garage on scenic 24 acres south of LAKE BELWOOD. Three bedrooms, dining room, eat-in kitchen, recreation room with woodstove, 2 baths. Insulated steel workshop 24'x36' has a variety of uses. Trout stream, beaver ponds, 10 acres cleared. Super location on paved road minutes from Guelph, Acton and Erin. For details, Please call SYLVIA BHEND or PATRICK HANLON (519) 822-8631.