

# CHRYSLER'S #1 SALES EVENT

## DRIVE HOME A BARGAIN

*THREE WAYS WE'D  
LIKE TO THANK YOU...*



### LEASE SPECIAL 1993 DODGE SPIRIT PLYMOUTH ACCLAIM

FROM **\$278<sup>92</sup>\*** PLUS TAXES

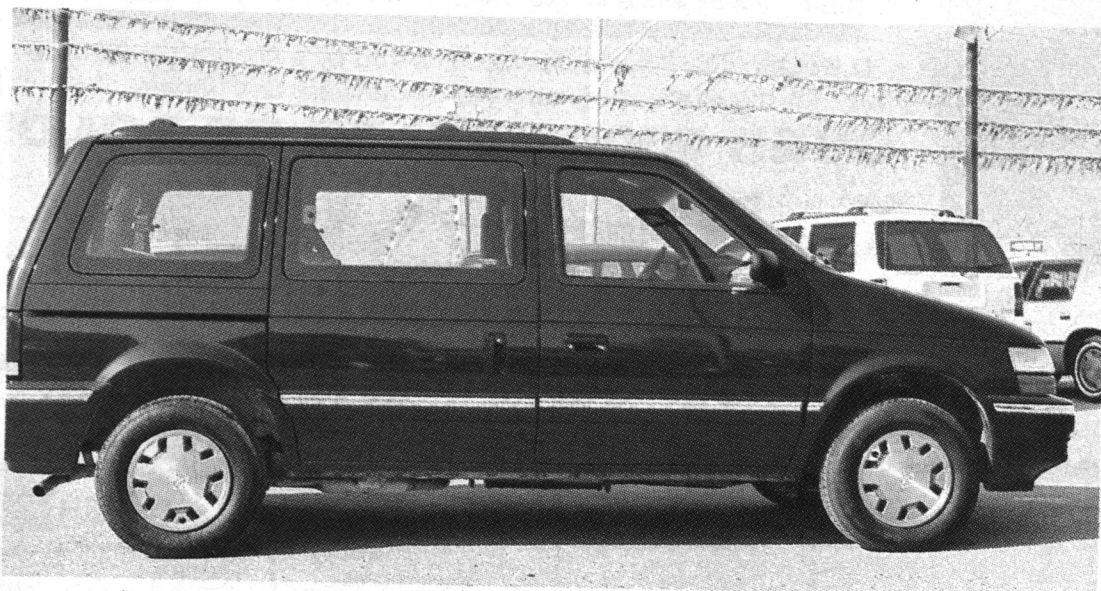
\*Leases based on 48 mos. OAC. Frt. and taxes extra.

### 1993 DODGE SPIRIT PLYMOUTH ACCLAIM

- No charge air conditioning
- Standard driver's side air bag
- Automatic transmission
- Available six passenger seating
- Front wheel drive
- Tilt/Cruise
- AM/FM stereo cassette
- Power steering
- Power disc brakes
- No charge Gold & Silver Special Edition Package includes: aluminum rally wheels, luggage rack, front fascia and mouldings, stripes, decals, and more.

Owner's choice 1  
protection plan  
**7/115**  
**3/60**

**\$13,393\***



### 1993 DODGE CARAVAN or PLYMOUTH VOYAGER

- Standard driver's side air bag
- 7 passenger seating
- Air conditioning
- Automatic transmission
- 3.0 litre V6 engine
- Front wheel drive
- Luggage rack
- AM/FM stereo
- Convenience light package

**\$16,293\***

## GEORGETOWN CHRYSLER (1993) LTD.

336 GUELPH ST., GEORGETOWN

877-0149

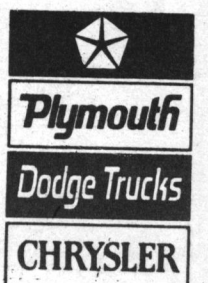
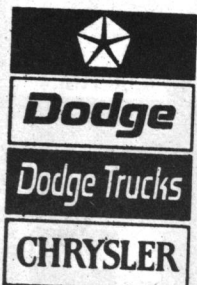
877-5108

846-1170

CHRYSLER



All you have to do is drive one.



\*Price includes \$1250 factory rebate (Shadow/Sundance), (Spirit/Acclaim), \$1000 factory rebate (Caravan/Voyager), assigned to dealer in lieu of finance offer and excludes freight, \$500 (Shadow/Sundance), \$525 (Spirit/Acclaim), \$675 (Caravan/Voyager), license, registration and taxes. Limited time offer. Dealer may sell for less. See dealer for details. \*Some restrictions apply. See dealer for details.