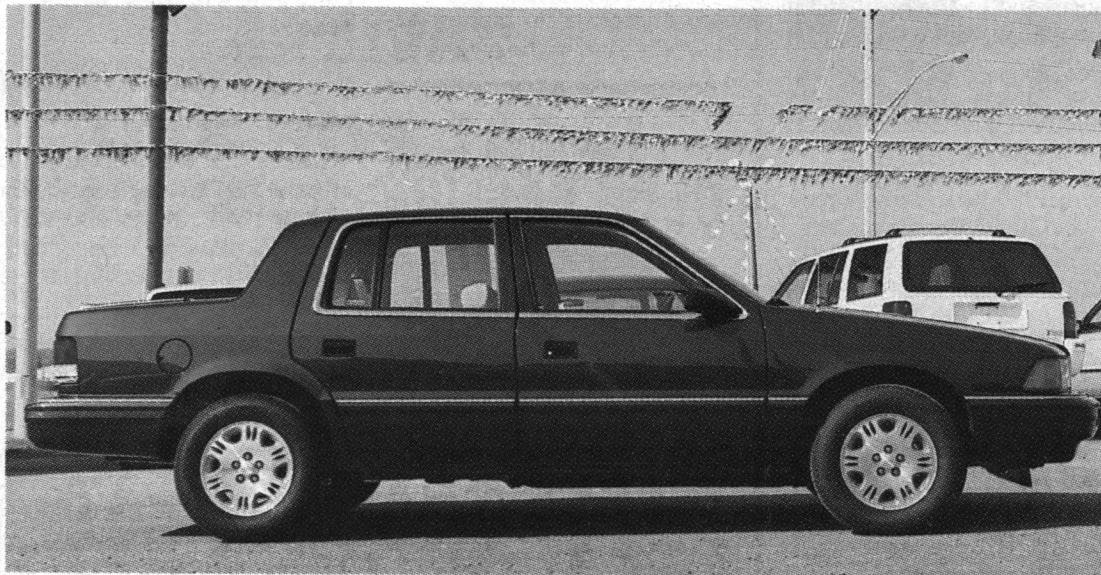


CHRYSLER'S #1 SALES EVENT

DRIVE HOME A BARGAIN

THREE WAYS WE'D
LIKE TO THANK YOU...



LEASE SPECIAL 1993 DODGE SPIRIT PLYMOUTH ACCLAIM

FROM **\$278⁹²*** PLUS TAXES

*Leases based on 48 mos.
OAC. Frt. and taxes extra.

1993 DODGE SPIRIT PLYMOUTH ACCLAIM

- No charge air conditioning
- Standard driver's side air bag
- Automatic transmission
- Available six passenger seating
- Front wheel drive
- Tilt/Cruise
- AM/FM stereo cassette
- Power steering
- Power disc brakes
- No charge Gold & Silver Special Edition Package includes: aluminum rally wheels, luggage rack, front fascia and mouldings, stripes, decals, and more.



\$13,393*



1993 DODGE CARAVAN or PLYMOUTH VOYAGER

- Standard driver's side air bag
- 7 passenger seating
- Air conditioning
- Automatic transmission
- 3.0 litre V6 engine
- Front wheel drive
- Luggage rack
- AM/FM stereo
- Convenience light package

\$16,293*

GEORGETOWN CHRYSLER (1993) LTD.

336 GUELPH ST., GEORGETOWN

877-0149

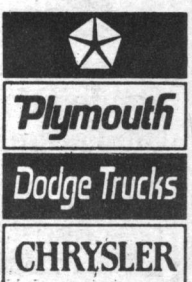
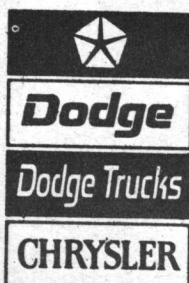
877-5108

846-1170

CHRYSLER



All you have to do is drive one.



*Price includes \$1250 factory rebate (Shadow/Sundance), (Spirit/Acclaim), \$1000 factory rebate (Caravan/Voyager), assigned to dealer in lieu of finance offer and excludes freight, \$500 (Shadow/Sundance), \$525 (Spirit/Acclaim), \$675 (Caravan/Voyager), license, registration and taxes. Limited time offer. Dealer may sell for less. See dealer for details. †Some restrictions apply. See dealer for details.