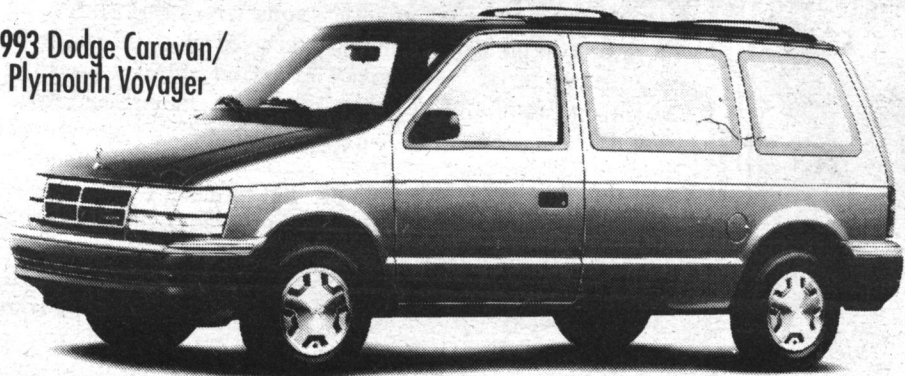


GEORGETOWN CHRYSLER (1993) LIMITED

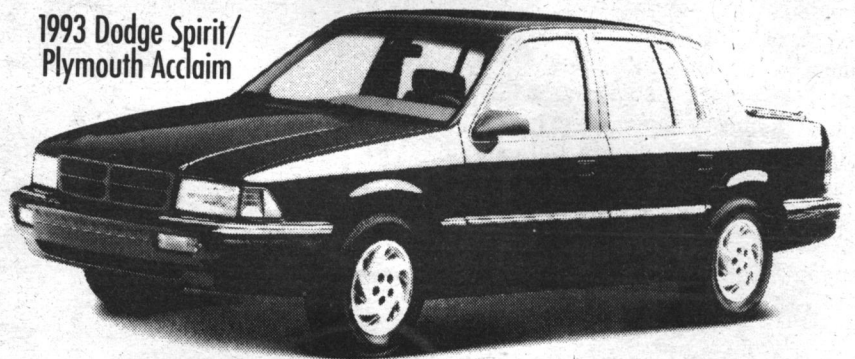
LEASE BONANZA

1993 Dodge Caravan/
Plymouth Voyager



- Standard driver's side air bag
- Automatic transmission
- Luggage rack
- 7 passenger seating
- 3.0 litre V6 engine
- AM/FM stereo
- Air conditioning
- Front wheel drive
- Convenience light package

1993 Dodge Spirit/
Plymouth Acclaim



- No charge air conditioning
- Tilt/Cruise
- Standard driver's side air bag
- AM/FM stereo cassette
- Automatic transmission
- Power steering
- Available six passenger seating
- Power disc brakes
- Front wheel drive
- No charge Gold & Silver Special Edition Package includes: aluminum rally wheels, luggage rack, front fascia and mouldings, stripes, decals, and more.

ONLY 48 MONTHS!
ONLY \$1000 DOWN CASH OR TRADE

1993 DODGE CARAVAN
PLYMOUTH VOYAGER
FROM **\$309.²⁹*** + TAXES



1993 DODGE SPIRIT
PLYMOUTH ACCLAIM
FROM **\$278.⁹²*** + TAXES

*Leases based on 48 mos. OAC. Frt. and taxes extra.

Mopar Customer Care

There IS a Difference!

OUR association began when you purchased your vehicle.

OUR OIL & FILTER CHANGE
Includes: Installation of up to 5 litres of Mopar Engine Oil and a Mopar Oil Filter
Please ask your Service Advisor for details
\$19⁹⁵

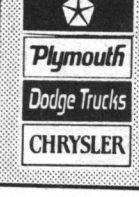
OUR FRONT DISC BRAKE SERVICE
Includes: Installation of semi-metallic pads
• Inspect front rotors
• Inspect front calipers, master cylinder, brake hardware and brake hoses
Please ask your Service Advisor for details
\$124⁹⁵
Most cars & light trucks

OUR ENGINE TUNE-UP
Includes: Installation of Autopar Spark Plugs
• Check plug wires, distributor cap, rotor, adjust timing, coil, PCV valve, belts, hoses, air filter and battery
Please ask your Service Advisor for details
\$69⁹⁵
4 Cylinder

OUR PEACE OF MIND DRIVING INSPECTION
Includes inspect and report on: • Battery and charging system • Cooling system • Fluid levels • Wiper blades • Headlights and bulbs • Hoses, clamps and belts • Tires, shocks/struts • Exhaust system • Lube hinges, hood latch and safety catch • C-V joint boots (where applicable)
Please ask your Service Advisor for details
\$19⁹⁵

OUR technicians are trained by the same people who designed and built your vehicle.

We feature quality, friendly service EVERY DAY. We make the difference.
YOUR FIRST CHOICE IN AUTOMOTIVE CARE



GEORGETOWN CHRYSLER (1993) LTD.
336 GUELPH ST., GEORGETOWN 877-0149 877-5108 Tor. 846-1170
(HIGHWAY 7) CHRYSLER All you have to do is drive one.

