

GEORGETOWN CHRYSLER (1993) LIMITED

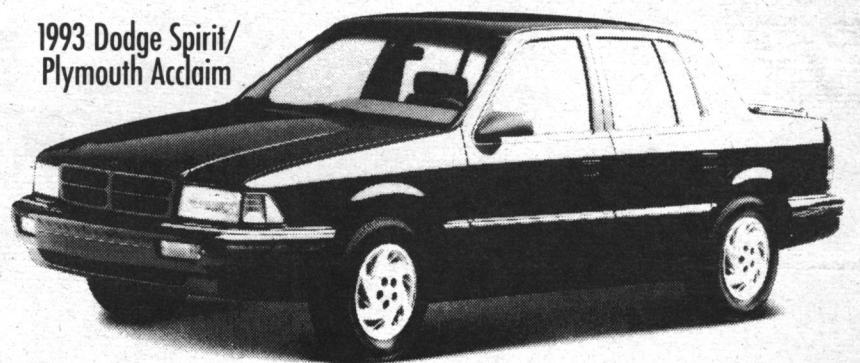
LEASE BONANZA

1993 Dodge Caravan/
Plymouth Voyager



- Standard driver's side air bag
- Automatic transmission
- Luggage rack
- 7 passenger seating
- 3.0 litre V6 engine
- AM/FM stereo
- Air conditioning
- Front wheel drive
- Convenience light package

1993 Dodge Spirit/
Plymouth Acclaim



- No charge air conditioning
 - Tilt/Cruise
 - Standard driver's side air bag
 - AM/FM stereo cassette
 - Automatic transmission
 - Power steering
 - Available six passenger seating
 - Power disc brakes
 - Front wheel drive
- No charge Gold & Silver Special Edition Package includes: aluminum rally wheels, luggage rack, front fascia and mouldings, stripes, decals, and more.

ONLY 48 MONTHS!
ONLY \$1000 DOWN CASH OR TRADE

1993 DODGE CARAVAN
PLYMOUTH VOYAGER

FROM **\$309.²⁹***
+ TAXES



1993 DODGE SPIRIT
PLYMOUTH ACCLAIM

FROM **\$278.⁹²***
+ TAXES

*Leases based on 48 mos.
OAC. Frt. and taxes extra.



Mopar Customer Care



There IS a Difference!

OUR
association
began
when you
purchased
your
vehicle.

**OUR OIL &
FILTER
CHANGE**

Includes: Installation of up to 5 litres of Mopar Engine Oil and a Mopar Oil Filter

Please ask your Service Advisor for details

\$19⁹⁵

**OUR FRONT
DISC
BRAKE
SERVICE**

Includes: Installation of semi-metallic pads
• Inspect front rotors
• Inspect front calipers, master cylinder, brake hardware and brake hoses

Please ask your Service Advisor for details

\$124⁹⁵
Most cars & light trucks

**OUR
ENGINE
TUNE-UP**

Includes: Installation of Autopar Spark Plugs
• Check plug wires, distributor cap, rotor, adjust timing, coil, PCV valve, belts, hoses, air filter and battery

Please ask your Service Advisor for details

\$69⁹⁵
4 Cylinder

**OUR
PEACE OF
MIND DRIVING
INSPECTION**

Includes inspect and report on:
• Battery and charging system
• Cooling system
• Fluid levels
• Wiper blades
• Headlights and bulbs
• Hoses, clamps and belts
• Tires, shocks/struts
• Exhaust system
• Lube hinges, hood latch and safety catch
• C-V joint boots (where applicable)

Please ask your Service Advisor for details

\$19⁹⁵

OUR
technicians
are trained
by the same
people who
designed and
built your
vehicle.

We feature quality, friendly service EVERY DAY. We make the difference.
YOUR FIRST CHOICE IN AUTOMOTIVE CARE



GEORGETOWN CHRYSLER (1993) LTD.
336 GUELPH ST., GEORGETOWN 877-0149 877-5108 Tor. 846-1170
(HIGHWAY 7) CHRYSLER All you have to do is drive one.

