

THREE WAYS WE'D LIKE TO THANK YOU.

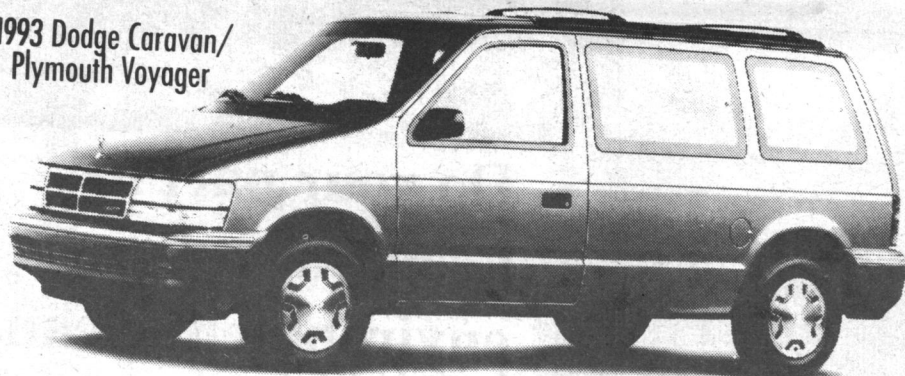
1993 Dodge Shadow/
Plymouth Sundance
4 Door



- Standard driver's side air bag
- Air conditioning
- Automatic transmission
- 2.2 litre EFI engine
- Front wheel drive
- Power steering
- Power disc brakes
- AM/FM 4 speaker stereo
- Tinted glass
- All season radial tires
- Rear window defroster
- Deluxe intermittent wipers
- Folding rear seat
- Dual remote mirrors
- Light package and more

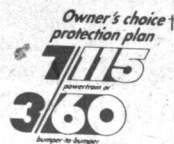
\$9,993*

1993 Dodge Caravan/
Plymouth Voyager

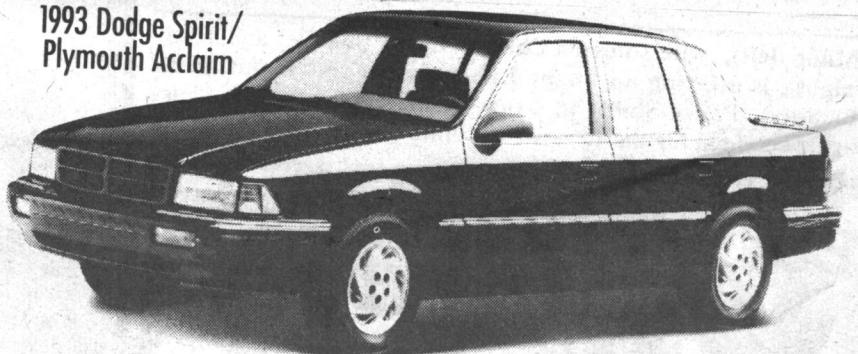


- Standard driver's side air bag
- 7 passenger seating
- Air conditioning
- Automatic transmission
- 3.0 litre V6 engine
- Front wheel drive
- Luggage rack
- AM/FM stereo
- Convenience light package

\$16,293*



1993 Dodge Spirit/
Plymouth Acclaim



- No charge air conditioning
- Standard driver's side air bag
- Automatic transmission
- Available six passenger seating
- Front wheel drive
- Tilt/Cruise
- AM/FM stereo cassette
- Power steering
- Power disc brakes
- No charge Gold & Silver Special Edition Package includes: aluminum rally wheels, luggage rack, front fascia and mouldings, stripes, decals, and more.

\$13,393*

GEORGETOWN CHRYSLER (1993) LTD.

336 GUELPH ST., GEORGETOWN

877-0149

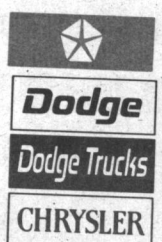
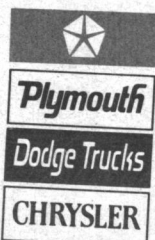
877-5108

846-1170

CHRYSLER



All you have to do is drive one.



*Price includes \$1250 factory rebate (Shadow/Sundance), (Spirit/Acclaim), \$1000 factory rebate (Caravan/Voyager), assigned to dealer in lieu of finance offer and excludes freight, \$500 (Shadow/Sundance), \$525 (Spirit/Acclaim), \$675 (Caravan/Voyager), license, registration and taxes. Limited time offer. Dealer may sell for less. See dealer for details. *Some restrictions apply. See dealer for details.